

Supplementary Data

The Electrophoretical detection of amplification of tick-borne pathogens PCR products on agarose gel.

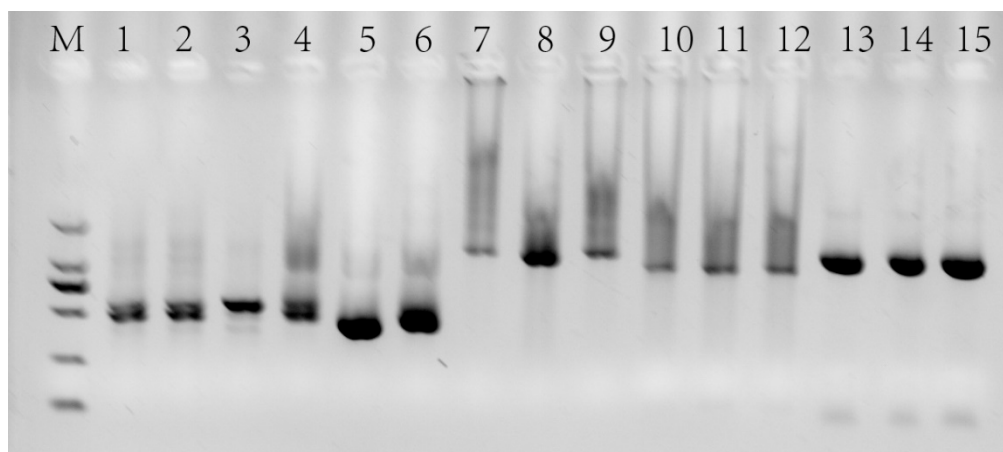


Figure S1. Electrophoretical detection of amplification of *Rickettsia* PCR products on agarose gel. M: 100-2000 bp marker (100, 250, 500, 750, 1000, 2000 bp); line 1-line3: *ompA* genes; line 4-line 6: 17 kD genes; line 7-line 9: *gltA* genes; line 10-line 12: *rrs* gene fragments 1; line 13-line 15: *rrs* gene fragments 2

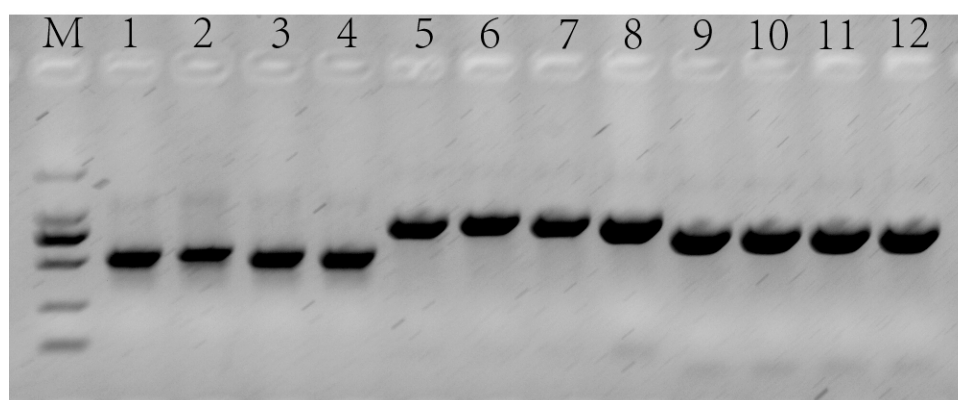


Figure S2. Electrophoretical detection of amplification of *Anaplasma rrs* genes PCR products on agarose gel.

M: 100-2000 bp marker (100, 250, 500, 750, 1000, 2000 bp); line 1-line4: 500 bp *rrs* gene fragments for screening; line 5-line 8: *rrs* gene fragments 1; line 9-line 12: *rrs* gene fragments 2.

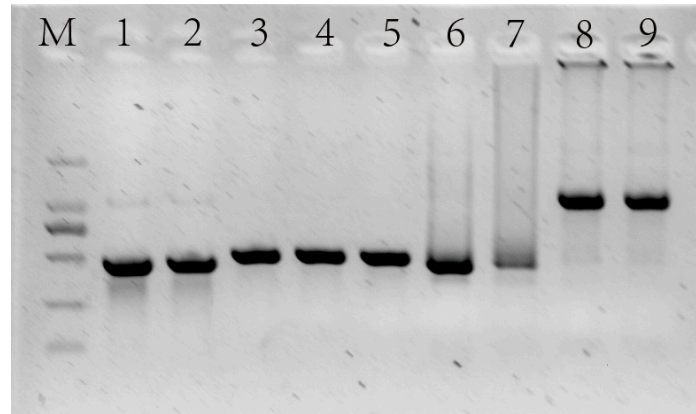


Figure S3. Electrophoretical detection of amplification of *Anaplasma gltA* genes PCR products on agarose gel.

M: 100-2000 bp marker (100, 250, 500, 750, 1000, 2000 bp); line 1-line2: *A. phagocytophilum*; line 3-line 5: *A. ovis*; line 6-line 7: *A. capra*; line 8-line 9: *A. bovis*.

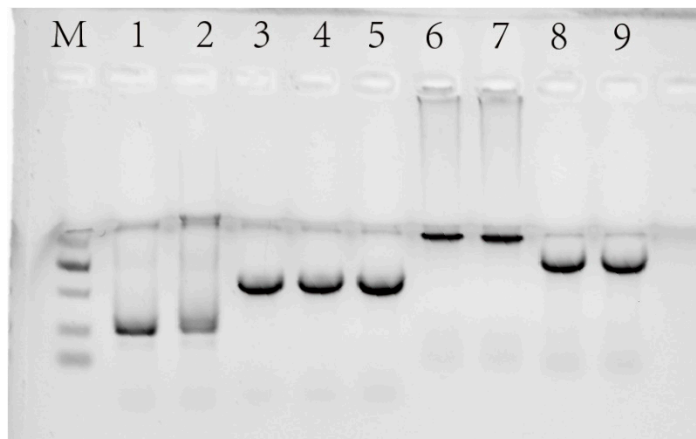


Figure S4. Electrophoretical detection of amplification of *Anaplasma groEL* genes PCR products on agarose gel.

M: 100-2000 bp marker (100, 250, 500, 750, 1000, 2000 bp); line 1-line2: *A. phagocytophilum*; line 3-line 5: *A. ovis*; line 6-line 7: *A. capra*; line 8-line 9: *A. bovis*.

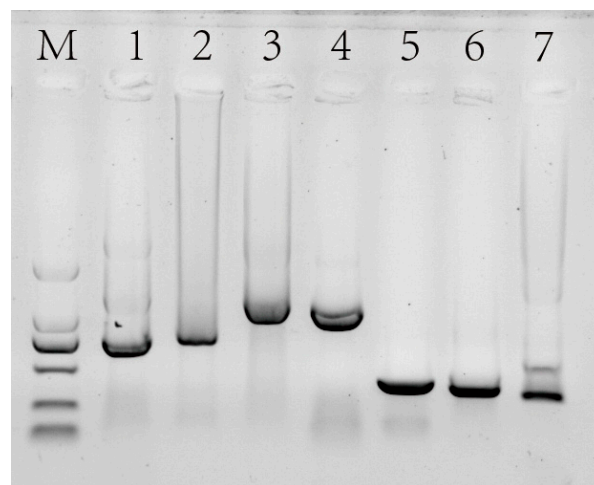


Figure S5. Electrophoretical detection of amplification of *Ehrlichia* PCR products on agarose gel.

M: 100-2000 bp marker (100, 250, 500, 750, 1000, 2000 bp); line 1: *rrs* gene fragment 1; line 2: *rrs* gene fragment 2; line 3: *gltA* gene; line 4: *groEL* gene; line 5: *dsb* gene; line 6: *ftsZ* gene; line 7: conP28 gene.

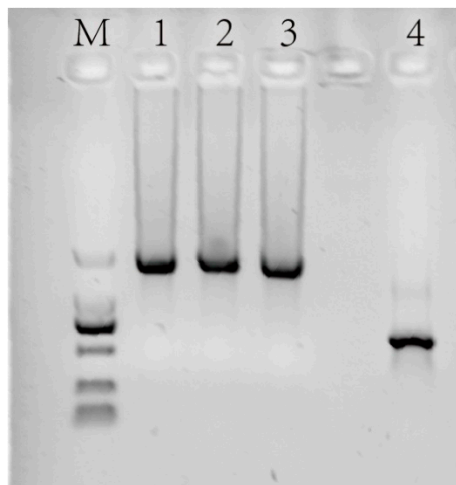


Figure S6. Electrophoretical detection of amplification of Protozoan Pathogens and *Borrelia* PCR products on agarose gel.

M: 100-2000 bp marker (100, 250, 500, 750, 1000, 2000 bp); line 1-2: *Theileria luwenshuni* 18S rRNA genes; line 3: *Hepatozoon felis* 18S rRNA genes; line 4: *Borrelia burgdorferi* ospA gene.