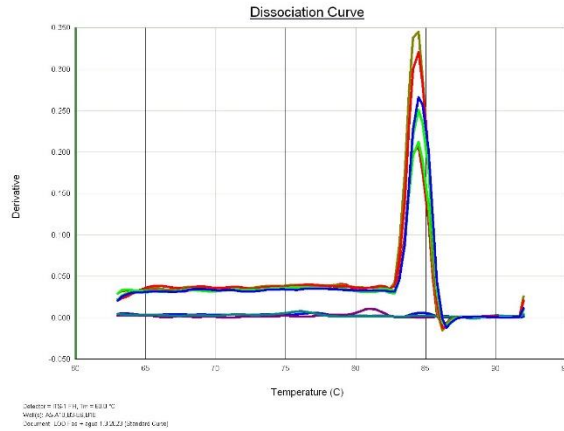
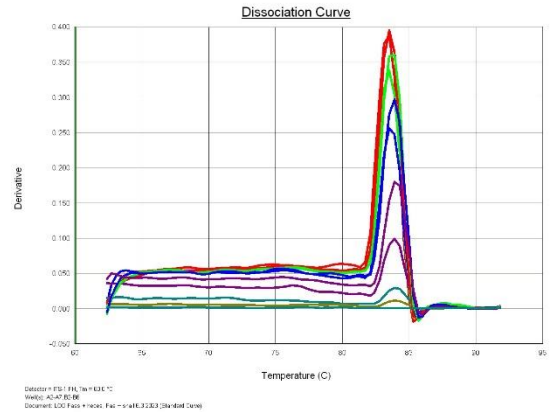


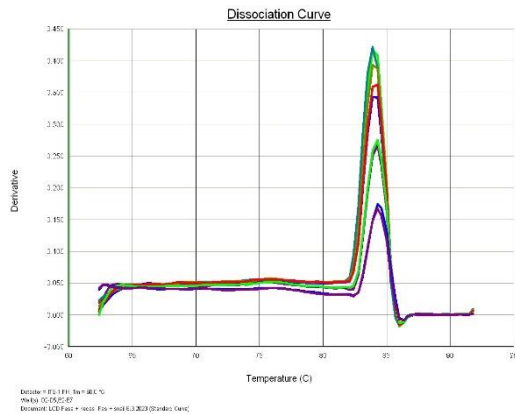
Serial dilutions LOD Fh + H2O



Serial dilutions LOD Fh + stools



Serial dilutions LOD Fh + Snail



Supplemental data Figure S1. “Dissociation curves of real time PCR experiments to detect *Fasciola* DNA”. Dissociation curves a specific peak at 84 C°, no dimer amplification or dissociation curves were observed in negative samples. The real time PCR amplification was conducted using specific primers for *Fasciola* 18s rDNA gene previously characterized [13]. Abbreviations: Fh = *Fasciola hepatica*