

Supplementary Material

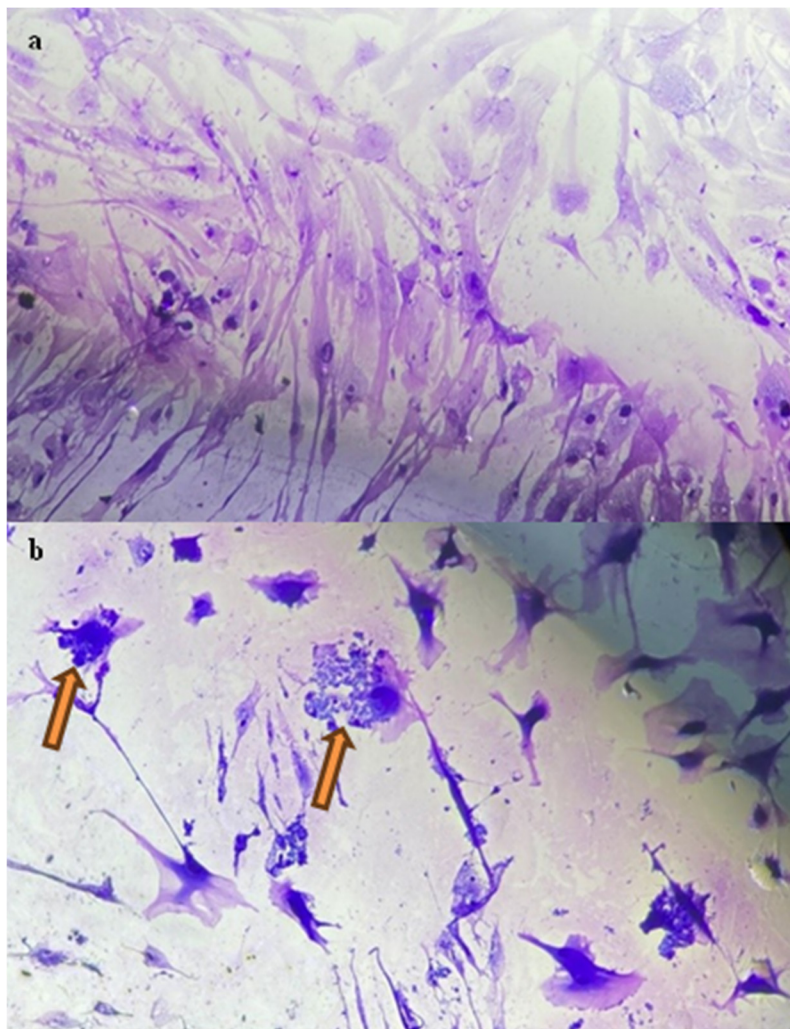


Figure S1. Light microscopic images of Fcwf-4 cells stained with DiffQuick. (a) control (b) inoculated with *C. felis* positive blood.

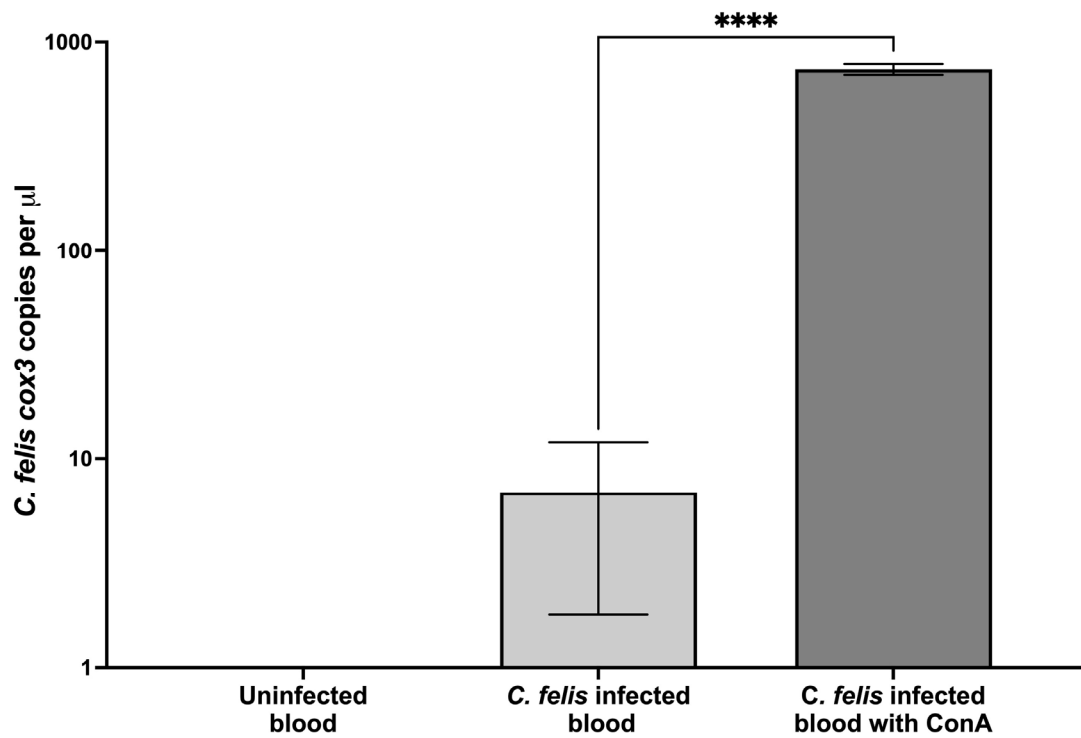


Figure S2. *Cytauxzoon felis* cox 3 copies in the Fcwf-4 cells inoculated with *C. felis* infected blood in the presence and absence of Concanavalin A (ConA). Fcwf-4 cells activated with ConA were 100 times more likely to become infected with *C. felis* compared to the cells that were not activated.

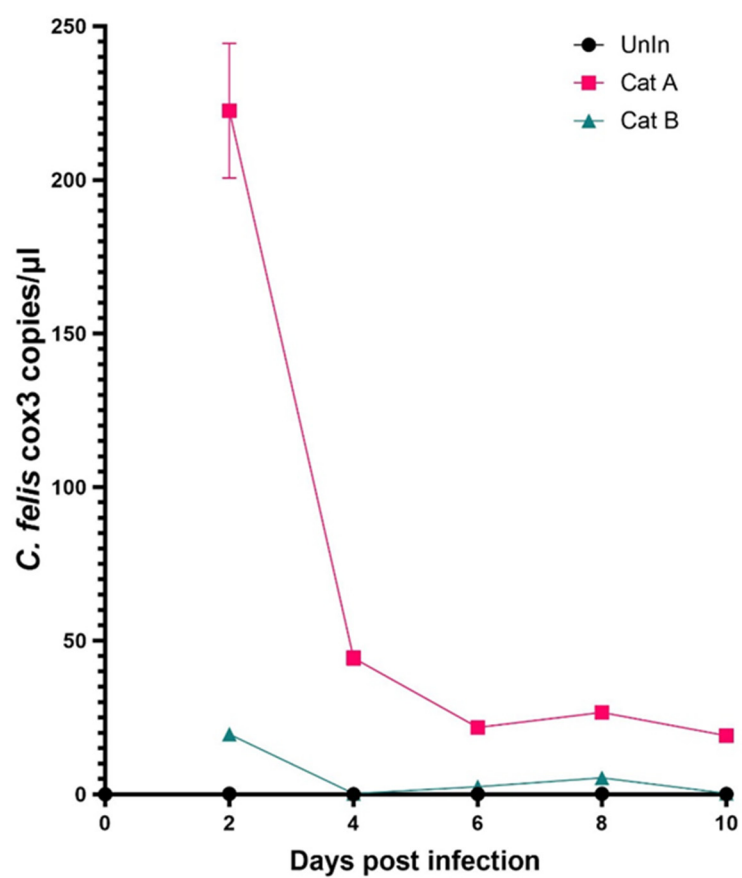


Figure S3. ddPCR results of in vitro experiment on the infection of Fcwf-4 cells with AAE2-infected cells.