

Article

# A Statistical State Analysis of a Marine Gas Turbine

Suzana Lampreia <sup>1,\*</sup> , Valter Vairinhos <sup>1</sup>, Victor Lobo <sup>1</sup> and José Requeijo <sup>2</sup>

<sup>1</sup> CINAV (Centro de Investigação Naval), Portuguese Naval Academy, 2810-001 Almada, Portugal

<sup>2</sup> Mechanical and Industrial Engineer Department, Faculty of Science and Technology of the Universidade Nova of Lisbon, 1099-085 Lisbon, Portugal

\* Correspondence: suzanalampreia@gmail.com

Received: 27 March 2019; Accepted: 3 July 2019; Published: 8 July 2019



**Abstract:** This paper describes the analysis, from a statistical point of view, of a maritime gas turbine, under various operating conditions, so as to determine its state. The data used concerns several functioning parameters of the turbines, such as temperatures and vibrations, environmental data, such as surrounding temperature, and past failures or quasi-failures of the equipment. The determination of the Mean Time Between Failures (MTBF) gives a rough estimate of the state of the turbine, but in this paper we show that it can be greatly improved with graphical and statistical analysis of data measured during operation. We apply the Laplace Test and calculate the gas turbine reliability using that data, to define the gas turbine failure tendency. Using these techniques, we can have a better estimate of the turbine's state, and design a preventive observation, inspection and intervention plan.

**Keywords:** gas turbine; functioning parameters; reliability; maintenance

## 1. Introduction

Some gas turbine components work in an extreme environment of high temperatures. This has an impact on the maintenance cycle, and performance of the turbine [1–3].

In the Summer, a Gas Turbine Power Plant can decrease its capacity of energy production by 24% when the temperature increases to 50 °C [3,4].

To define a gas turbine maintenance schedule [3], we must consider what kind of problem it has, what possible solutions are available, and what the owners want. For example, we may detect a rising problem with vibration due to imbalance with a turbine blade. The substitution of the whole engine, substitution of only the damaged parts or adjustments in those parts or operating modes, may all be possible solutions for that given situation, and the owners must decide what course to take.

The chosen fuel for gas turbine operation [4] and the environment in which it works has influence on its performance, and consequently in the maintenance and life cycle [5]. This study intends to define the state of a gas turbine considering the vibration and temperature selected sensors facing the different environment in which the data is collected. Thirty samples were taken from the gas turbine sensors with different environment temperatures, and 18 anomalies were studied in a certain time interval.

## 2. Reliability and Condition Based Maintenance

The reliability knowledge allows knowing the probability of a system failure in a certain time interval, conducting to an action in time to correct an anomalous situation if it is needed.

Many techniques may be applied, for example, Failure Mode Effect and Criticality Analysis (FMECA) can be used to identify equipment hiatus and take some preventive measures to eliminate potential failures [6].

A failure means that the functioning of a component or system is finished or its state is degraded, and the operating parameters are unsatisfactory. In addition, probably low level of operability, high reparation cost or risk to safety, both material and personal, will exist.

Some statistical techniques are available and can be developed to support failure and reliability analysis, such as Pareto Analysis, Weibull Probability Density Function, calculation of Mean Time Between Failure (MTBF) and Laplace Test.

These statistical methods support and allow the strongest diagnosis and assumptions contributing to an accurate diagnosis [7].

Before we start a condition monitoring study, we must confirm that the chosen point of measures and the selected parameters are the ones that will represent the equipment state.

### 2.1. Pareto Analysis

The Pareto analysis applied as a tool to a strategic management can support the definition of an organization or system “strengths and weakness” [8]. When applied on equipment condition monitoring can give the organization the opportunity to define the strategies to correct the causes of anomalies, so the preventive or corrections occurs when an opportunity in an operational cycle is given, maximizing the availability time.

The Pareto analysis may be used when a reliability study begins. This methodology can group the failures according to the causes, so in this case, the number of failures is usually more than the causes. This analysis allows to focus on the study and prevention of the failures that occurs most often, saving economic resources [9]. The collected data are represented graphically by columns, which represents the systems that failed, causes are in the horizontal axis and the number of causes are in the vertical axis.

Despite the importance of Pareto Analysis to determine the maintenance priorities and what leads to the cause of failure, it does not allow to determine exactly what is influencing the downtime, for that we use other statistics techniques [10].

### 2.2. Weibull Probability Density Function

The failure distribution is the probability of a system failure in function of time [11]. The Weibull distribution is a viable model to equipment and systems reliability study and life-testing [12].

The Weibull Probability Density Function is usually used in failure analysis and it can be adapted to various studies. In this study we will use the equation:

$$R(t) = \exp\left\{-\left(\frac{t-\mu}{\delta}\right)^\beta\right\}, \quad (1)$$

where  $t$  is the time interval,  $\mu$  is the mean,  $\beta, \delta$  ( $\delta = 1/\lambda$ ) are the form factor, and  $\lambda$  is the proportionality factor. Furthermore, in  $F(t) = 1 - R(t)$  the reliability  $R$  is the complement of the distribution  $F(t)$ , the system failure function [13].

So, in the Weibull distribution a failure of a component from an equipment or system can be treated as a failure of the equipment or system, and the probability of equipment “survival” depends “on the probability of not having died” [14], in the present case if the equipment is not damaged.

### 2.3. Statistics of a Repairable System

A repairable system is a system that if a failure occurs it operationally can be restored under certain condition, considering components repair or substitution [15].

The availability of a repairable system is a function of the Loading Time (LT) and Down Time (DT). For a system with a stable failure rate, the availability is [16]:

$$A = \frac{LT - DT}{DT}, \quad (2)$$

where  $LT$  is the time in which the equipment is operating, and the  $DT$  the time when the equipment is down in a sequence of an anomaly/repairation.

For the systems which the failure rate is stable we calculate the MTBF using (3):

$$MTBF = \frac{T}{n_f}, \quad (3)$$

where  $T$  is the total functioning time for the system, and  $n_f$  is the number of failures.

#### Laplace Test

The Laplace test is a simple test of the failure data collected from a component or equipment which allows to determine the failure tendency [11].

Considering a time limited test:

$$Z_0 = \sqrt{12n_f x} \left[ \frac{\sum_{i=1}^{n_f} \tau}{n_f \cdot T} - 0.5 \right], \quad (4)$$

$n_f$  is the number of components that fail,  $T$  is the interval of the test,  $\tau_i$  the system age for a failure of  $i$  order, considering  $H_0$  with stable failure rate,  $H_1$  with non-stable failure rate, and  $\alpha = 0.05$ .

In a Homogeneous Poisson Process, if  $Z_0 > \left| Z_{\frac{\alpha}{2}} \right|$  the  $H_0$  is rejected [10].

For the systems with increasing failure rate, generally we propose improvements on the maintenance management and re-evaluate the equipment state.

#### 2.4. Vibration Measure

Vibration is a good state indicator of rotating equipment, because vibration in a good state has one frequency signature and with a bad performance has another [17].

To measure and analyze vibration we can use Spectrum Frequency or Root Mean Square (RMS). RMS vibration level is essential because it usually represents the machine's overall state and, in a later situation, frequency analysis can be performed to effectively diagnose the anomaly [18,19].

In this article because of the transducer characteristics we will use the RMS.

RMS values allow the detection of abnormal vibration in most cases, this vibration can be given by:

$$x_{RMS} = \sqrt{\frac{1}{N} \sum_{i=1}^{i=N} x_i^2}, \quad (5)$$

It should be noted that in the measurement and analysis of vibrations, the frequency is essential because repeatability is the ability of a given measuring equipment, under the same conditions, to provide similar values of a characteristic, in order to obtain a reliable result that can serve as a basis for detection and diagnosis in online condition monitoring.

The vibration analysis will be used in complement to others. Once a detection is made, the severity of the value obtained and, if possible, the affected components must be determined. Patterns are then detected and comparisons must be made with previous readings of the same machine and similar ones [20].

Because we are not analyzing vibration frequency, we analyze the tendency measuring the RMS values. Vibration limits must be defined for the control. In addition, in this analysis, the actions to be performed should be considered as soon as a trend is detected and when they must be taken to determine the time available for the operation of the equipment [20].

### 3. Inspection and Maintenance Plan

Although the gas turbine has a defined preventive maintenance plan, we will develop a methodology to control the engine functioning and act when an anomaly, a product of various conjugated parameters and factors, demonstrates to us that necessity.

The data should be collected continuously throughout and periodically in the gas turbine life-cycle, because some vibration registers can indicate various failures type, the sample must be in a value capable of characterizing the equipment performance, and the values should always be carefully analyzed and if it is possible compared to other collected parameters [21].

Therefore, the methodology we proposed next is as follows, Figure 1:

- Proceed to online condition monitoring by continuous collection of the data;
- Collect data from vibration and temperature sensors;
- Collected registered failures of gas turbine;
- Analyze the distribution of vibration and temperature in time.
- Apply Pareto analysis;
- Calculate the reliability of the gas turbine;
- Apply the Laplace Test;
- Calculate the MTBF;
- Calculate the Availability;
- Evaluate the results:
  - If the failure rate is increasing: evaluate with the sensors' parameters to decide the intervention or substitution;
  - If the failure rate is decreasing: maintain the observation;
  - If the rate failure is stable: check if the obtained parameters are admissible, if not, decide when the intervention or substitution takes place.

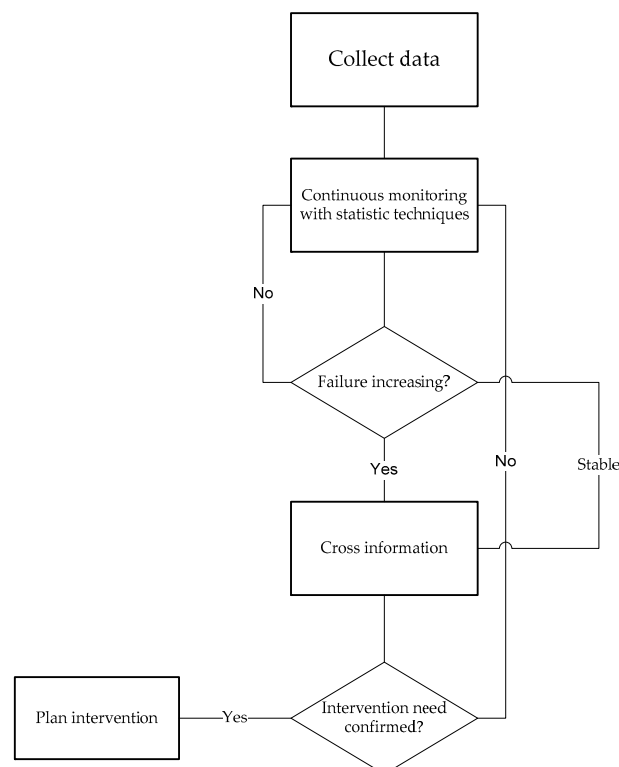


Figure 1. Methodology.

#### 4. Results

The gas turbine LM2500 under study is a maritime aero derivate gas turbine installed in a ship, and has the characteristics in Table 1:

**Table 1.** LM2500 characteristics.

Property	Value
Power output	33,600 shp <sup>1</sup> (25,060 kW)
Fuel Consumption	227 g/kW·h
Exhaust Gas Flow	70.5 kg/s
Exhaust Gas Temperature	566 °C
Heat Rate	9705 kJ/kW·h
Turbine Speed	3600 rpm
Thermal efficiency	37%
Weight	4.7 ton

<sup>1</sup> Shaft Horsepower

The considered sensors for this study are list in Table 2:

**Table 2.** LM2500 studied parameters.

Name	Meaning
SNV0374	GT1 GG VIB XDUCER TF1(GG SELF) <sup>1</sup>
SNV0375	GT1 GG VIB XDUCER TF2 (PT IND) <sup>2</sup>
SNV0376	GT1 PT VIB XDUCER TF1 (GG IND) <sup>3</sup>
SNV0377	GT1 PT VIB XDUCER TF2(PT SELF) <sup>4</sup>
SOT0369	GT1 LUB OIL SCAVENGE TEMP A <sup>5</sup>
SOT0370	GT1 LUB OIL SCAVENGE TEMP B <sup>6</sup>
SOT0371	GT1 LUB OIL SCAVENGE TEMP C <sup>7</sup>
SOT0372	GT1 LUB OIL SCAVENGE TEMP D <sup>8</sup>

<sup>1</sup> Gas Generator self vibrations. <sup>2</sup> Gas Generator induced vibrations by the Power Turbine. <sup>3</sup> Power Turbine induced vibrations by the Gas Generator. <sup>4</sup> Power Turbine self vibrations. <sup>5</sup> Oil Scavage A temperature. <sup>6</sup> Oil Scavage B temperature. <sup>7</sup> Oil Scavage C temperature. <sup>8</sup> Oil Scavage D temperature.

This LM2500 gas turbine usually uses marine gasoil for its functioning, and for initiate running, it uses high-pressure compressed air.

To understand the Gas Turbine Vibrations results we must mention that this turbine is divided into two parts, the Gas Generator and the Power Turbine. The Gas Generator is divided into three parts: Compressor, Combustion Chamber and the High Pressure Turbine. The connection from the Gas Generator to the Power Turbine are thermodynamics. So, the Gas Generator has one shaft and the Power Turbine another, and there is no physical connection to transmit the motion between both, only the temperature and gas mixture expansion from the combustion are transmitted to the Power Turbine allowing it to rotate. However, the connections of the gas generator to the power turbine are made by the cover and accessories, which allows the turbine to be a whole.

The failures in gas turbine can occur in various components, but the hot parts are especially sensitive, because many gas turbine failures are in the section with hot components (e.g., blades, combustion chamber) [22].

The time event registering is crucial for gas turbine condition monitoring [23].

The collected vibration and oil temperatures were collected at the same conditions, considering the gas generator rotating at 7450 rpm and the power turbine at 1590 rpm. The data were collected considering the ship navigating, and collected with a 30 min of interval. The results of gas turbine data vibration sensors (accelerometers) collection are in Figure 2 and scavenges temperatures in Figure 4. Since the installed accelerometers only measure in one direction, which is not specified in the user manual, to complement the vibration behaviour usually vibrations are measured in the three axis (Vertical, horizontal and axial) [24]. The vibration values are in millimeters per second (mm/s) and are Root Mean Square Values. The gas generators' self-vibrations are the vibrations from the gas generator, and the induced vibrations are the vibrations of the power turbine induced in the gas generator. The power turbine self-vibrations are the vibrations with origin in the power turbine, and the induced are the vibrations of the gas generator induced on the power turbine.

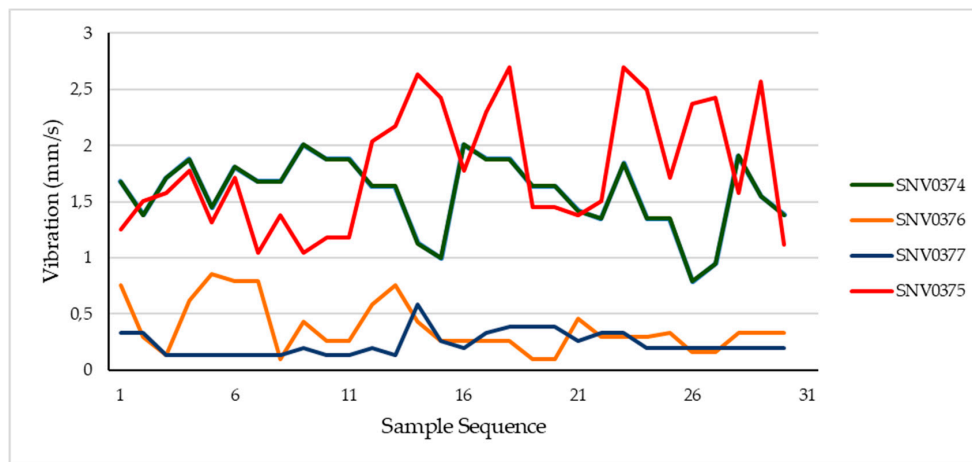


Figure 2. Vibrations.

The SNV sensors represent vibrations and the SOT represent scavenge temperatures.

We can see that for the same moment the vibration on SNV0374 and SNV0375 that represents the self and induced vibration on the compressor are higher than for the turbine. The SNV0376 and SNV0377 have lower values relative to compressor sensors.

In Figure 3 we can see the temperature descending along the observations, probably the engine decreases its velocity, so the temperature decreases, but the operators did not register the change in power. This can be one of the problems in data accuracy analysis: analyzing values which do not correspond to the power levels registered.

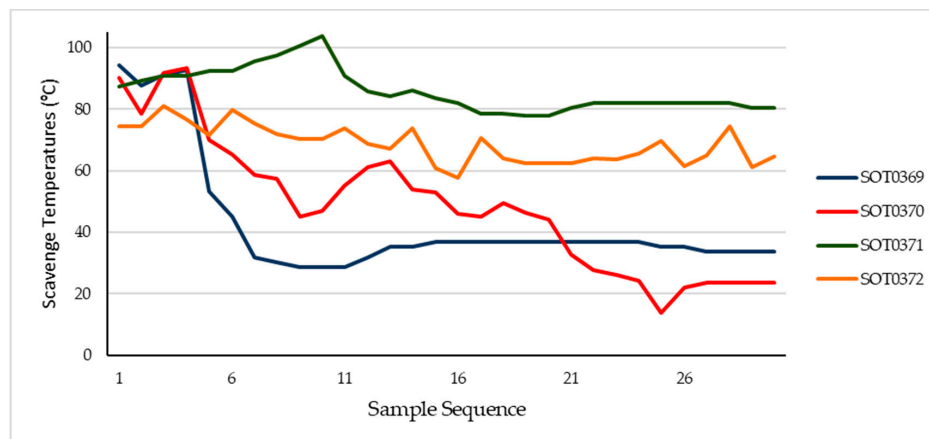
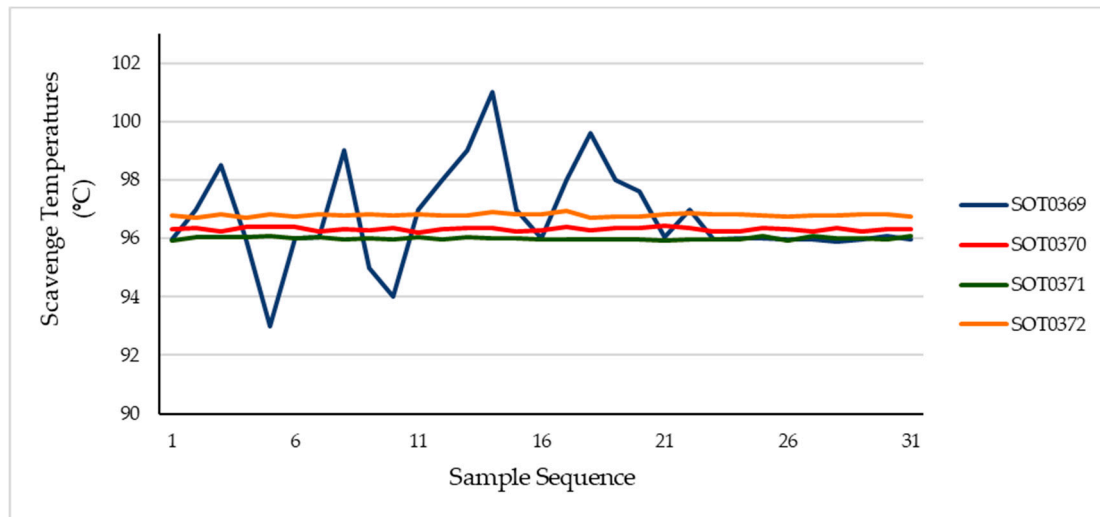


Figure 3. Scavenge temperatures.

Then, if we considered the environment temperature increasing, we may have all the temperatures higher, so we simulate a 16 °C increase in the temperature inlet on the gas turbine compressor, which we obtained in Figure 4.



**Figure 4.** Scavenge Temperatures—higher inlet temperature.

Apparently, the scavenge temperatures had stabilized at higher temperatures, the result for the sensor SOT0369 is to demonstrate the result of sensor malfunction, the procedure is to substitute the anomalous sensor and the results stabilize, in this case since observation [22].

For the environment high temperature levels there is no evidence or alarm, in short time, of vibration increasing, so the vibration graphical data for higher seawater temperature is not present in this article. A common reason for this lack of evidence is when the gas turbine power is reduced because of the high exhaust gas temperature, consequently no other parameter gets higher or close to the limit. However, there is a certainty by other literature that the gas turbine performance decreases when the temperature environment increases to high levels like 50° [1,25].

The results show that the conjugation of various variables with statistical treatment can be more accurate to define a maintenance plan for the gas turbine.

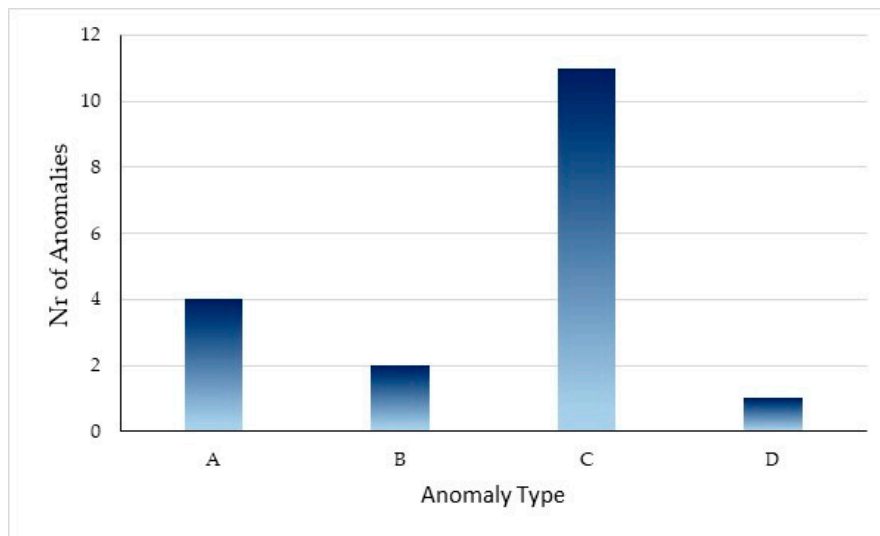
The degradation of the gas turbine depends on the environment conditions and in which “power plant” or system it is applied.

This turbine shows high vibration on the compressor. It is known that it was not close to the limit because the gas turbine power was limited. This revealed the need for balance on this system (rotor). This was a real situation, and the Gas Turbine had an intervention maintenance, a mechanical balance on the compressor rotor blades conducted by a specialist of this gas turbine.

#### 4.1. Pareto Analysis

For the actual study, we group four types of gas turbine failures.

In the evaluation of the system, 18 failures occurred. The failure registration contemplated a 365 day period; we subdivided the failures into four types: compressed air system (A), fuel system (B), vibrations (C), and various components failures (D), Figure 5.

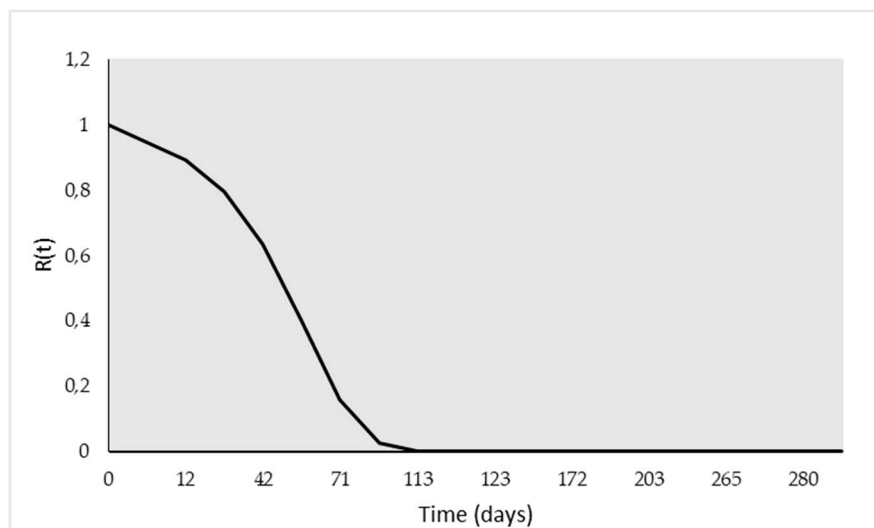


**Figure 5.** Pareto Analysis—Anomalies vs. type occurrences.

The compressed air system had four failures, the fuel system two failures; 11 vibrations alarms were registered and one registered failure of other components. The vibration alarms were the highest type of occurrences, Figure 5. It should be noted that some of the vibration alarms registration can be sensor malfunctions, or some specific and punctual registration related with the platform and environment conditions.

#### 4.2. Gas Turbine Reliability—Laplace Test and MTBF

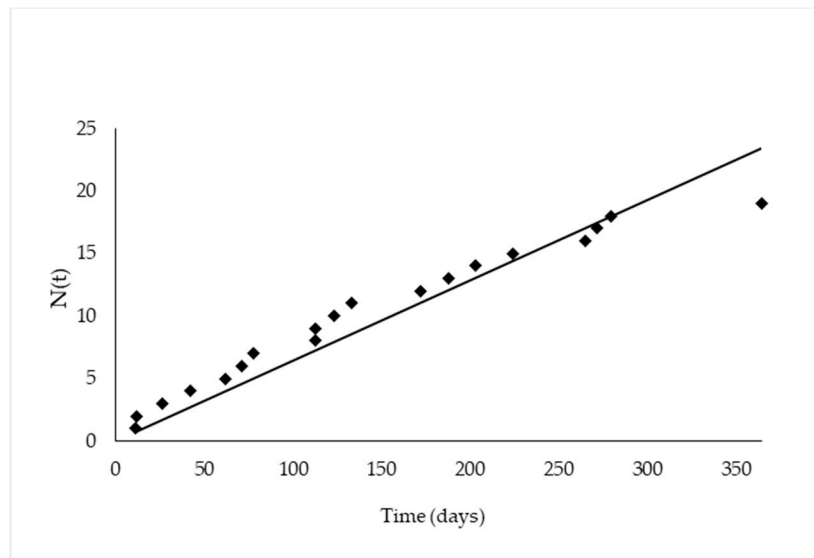
The reliability function of the gas turbine not considering the repairs between failures and considering a study of 365 days is represented by Figure 6. The study begins in day zero, not mathematical considering what happened before. The Weibull distribution is a reasonable fit for the equipment under study.



**Figure 6.** Reliability function.

The time failure distribution is accordingly Figure 7, where  $N(t)$  is the total number of failures from the 0 to 365 day).





**Figure 7.** GT—Anomalies type occurrences.

Along one year, the gas turbine registered 18 anomalies. We applied the Laplace Test to define the gas turbine reliability, and calculate the MTBR.

For the Laplace test we use  $n_f = 18$ , for a 365 days of data collection, a  $\sum \tau_i = 2753$ , and a  $Z_0 = -1.1900717$  so the failure rate is constant for a confidence interval with  $\alpha = 5\%$ ,  $]-1.96; 1.96[$ .

With the  $Z_0$  result, the  $H_0$  is not rejected for a 5% significance level, and so, because the system has a constant failure rate, it is a Poisson Homogenous Process.

Studying the failures distribution, we obtain an MTBR of 20.28. In all the registered failures, none were catastrophic. We also calculate the availability A (Equation (2)), considering a year of study and a down time of 24 days, and we obtained a 93%, which is a high and acceptable value.

Currently in the organization, the proposed methodology is not applied, but it is believed that with limited financial resources it will be possible to implement it.

## 5. Discussion

Integrating the statistical analysis, the Laplace test showed a constant failure rate, comparing with the obtained parameters data, vibration and scavenge temperatures, it was not possible to define a direct relation between them. Although the known anomaly on the compressor registered by the vibrations, its values are not increasing, they are steady. The values oscillation on a certain interval at the constant power input can perhaps be explained by the influence of other equipment's, platform where it is installed and the variation of the environment (considering sea and wind state). We must understand that this is an aero-derivate gas turbine which is installed in a ship with others propulsion systems and equipment to sustain a ship operation on sea for several days. The sea has great influence on the equipment functioning; sometimes, the propellers come to the surface because of the waves, and this fact changes shortly the propulsion systems parameters, including power.

The MTBF results are reasonable considering that none catastrophic anomaly occurred.

The Pareto Analysis showed us which systems or components of the gas turbine more frequently fail, so this one should be monitored more often.

The availability allowed us to know the percentage of time in which the gas turbine was functioning.

In future work the temperature in the power turbine of the gas turbine system should be analyzed together with the scavenge temperature. For this study we could not connect the gas turbine state with the temperature results.

Given the collected and simulated data it was possible, in scavenge temperature sensor, to connect the environment temperature with the results. Higher temperatures of environment lead to higher

temperature in gas turbine parameters. The comparison between the specifications of the used marine gasoil and other combustibles on the gas turbine performance was not considered.

For the obtained results, and because recording data is not defined in the actual maintenance system, we propose to:

- Daily collect and register data for the various power levels registered on the gas turbine, considering compressor and turbine vibration signature and temperature of the scavenge and temperature from the existing temperature sensors of the gas turbine;
- Implement a statistical software system associated with others in order to treat the collected data (considering Pareto Analysis, Laplace test, reliability function, availability calculus and MTBR);
- Study and monitor online similar gas turbines from other ships with the same methods.

## 6. Conclusions

The Pareto analysis is important to initiate the reliability study, allowing to group the anomalies, highlighting the incidence on subsystems. With this technique, we can decide which gas turbine systems or components should be more frequently monitored.

We can calculate the gas turbine reliability with a continuous monitoring and anomalies historic registry and by applying the Laplace Test. The Laplace Test allowed us to determine that the gas turbine has a steady rate failure.

The calculation of the MTBF shows on which time interval the failures occurs, and allied to Laplace Test supported us in predicting when a failure happens, but we still not know the availability. So, the availability was calculated and showed a high percentage which contributes to a high availability of the ship where the gas turbine is installed. The time failure distribution shows that the failures mostly occurred near the normal.

Various statistical techniques may be applied simultaneously to allow a mechanical system monitoring with more information certainty.

Statistical control may be essential for equipment performance monitoring and condition maintenance, mostly when ships operate in areas where adverse environment conditions exist and the equipment performance decreases.

**Author Contributions:** S.L. collected the data, developed the methodology and made the conceptualization of the idea of investigation, draft preparation. V.V. contributed with the writing review and with the final conceptualization. V.L. contributed with conceptualization of the idea of investigation and the writing review. J.R. contributed to the conceptualization of the idea of investigation.

**Acknowledgments:** In this Portuguese Naval School and CINAV are kindly acknowledged for the use of the machinery workshop and for the fruitful collaboration of the Faculty of Science and Technology from the Universidade Nova of Lisbon.

**Conflicts of Interest:** The authors declare no conflict of interest.

## References

1. Santos, A.P.; Andrade, C.R. Analysis of gas turbine performance with inlet air cooling techniques applied to Brazilian Sites. *J. Aerosp. Technol. Manag.* **2012**, *4*, 341–353. [[CrossRef](#)]
2. Ibrahim, T.K.; Rahman, M.M.; Mohammed, M.K.; Basrawi, F. Statistical analysis and optimum performance of the gas turbine power plant. *Int. J. Automot. Mech. Eng.* **2016**, *13*, 3215–3225. [[CrossRef](#)]
3. Moritsuka, H.; Fujii, T.; Takahashi, T. Development of a maintenance program for major gas turbine hot gas path parts. *J. Eng. Gas Turbines Power* **2002**, *124*, 867–873. [[CrossRef](#)]
4. Ghenai, C. Combustion of Syngas Fuel in Gas Turbine Can Combustor. *Adv. Mech. Eng.* **2015**, *2010*, 1–13. [[CrossRef](#)]
5. Rashidzadeh, H.; Hosseinalipour, S.M.; Mohammadzadeh, A. The SGT-600 Industrial Twin Shaft Gas Turbine Modelling for Mechanical Drive Applications at the Steady State Conditions. *J. Mech. Sci. Technol.* **2015**, *29*, 4473–4481. [[CrossRef](#)]

6. Brom, A.E.; Omelchenko, I.N.; Belova, O.V. Life costs for energy equipment FMECA for gas turbin. In Proceedings of the International Conference on Oil and Gas Engineering (OGE), Omsk, Russia, 25–30 April 2016; pp. 177–181.
7. Stamatis, A.G. Evaluation of Gas Path Analysis Methods for Gas Turbine Diagnosis. *J. Mech. Sci. Technol.* **2011**, *25*, 469–477. [CrossRef]
8. Powell, T.; Bonnici, T.S. Pareto analysis. In *Wiley Encyclopedia of Management*; Cooper, C.L., Ed.; John Wiley & Sons: Chichester, UK, 2014.
9. O'Connor, P.D.T. *Practical Reliability Engineering*, 3rd ed.; John Wiley & Sons Ltd.: Chichester, UK, 1991.
10. Knights, P.F. Rethinking Pareto Analysis: Maintenance Applications of Logarithmic Scatterplots. *J. Qual. Maint. Eng.* **2001**, *7*, 252–263. [CrossRef]
11. Kim, C.J.; Lee, S.; Kang, S. Evaluation of Feeder Monitoring Parameters for Incipient Fault Detection Using Laplace Trend Statistic. *IEEE Trans. Ind. Appl.* **2004**, *40*, 1718–1724. [CrossRef]
12. Maqsood, A.; Aslam, M. A comparative Study to Estimate the Parameters of Mixed-Weibull Distribution. *Pak. J. Stat. Oper. Res.* **2008**, *4*, 1–8. [CrossRef]
13. Dias, J.A.M. *Gestão da Manutenção—Fiabilidade e Manutibilidade*; DEMI, FCT-UNL: Caparica, Portugal, 2002. (In Portuguese)
14. Weibull, W. A Statistical Distribution Function of Wide Applicability. *ASME J. Appl. Mech.* **1951**, *18*, 293–297.
15. Arasan, J.; Ehsani, S. Modeling Repairable System failures with Interval Failure Data and Time Dependent Covariate. *J. Mod. Appl. Stat. Methods* **2011**, *10*, 618–624. [CrossRef]
16. Relkar, A.S.; Nandurkar, K.N. Optimizing & Analysing Overall Equipment Effectiveness (OEE) Through Design of Experiments (DOE). *Procedia Eng.* **2012**, *38*, 2973–2980.
17. Neset, J.L. Equipment Using Bilinear Modeling of Vibrations. Master's Thesis, Department of Engineering Cybernetics, Norwegian University of Science and Technology (NTNU), Trondheim, Norway, 2018.
18. Alves, J.V.; Brito, L.C.; Filho, P.C.; Brito, J.N. Monitoramento básico da condição de funcionamento de máquinas rotativas através da “Caneta de Vibração” (Basic monitoring of the operating condition of rotary machines through the “VibrationPen”). In Proceedings of the XI National Congress of Mechanical, Metallurgy and Industrial Engineering, Porto Alegre, Brazil, 3–5 August 2011. (In Portuguese).
19. Igba, J.; Alemzadeh, K.; Durugbo, C.; Eiriksson, E.T. Analysing RMS and Peak Values of Vibration Signals for Condition Monitoring of Wind Turbine Gearboxes. *J. Renew. Energy* **2016**, *91*, 90–106. [CrossRef]
20. Mobius Institute. *Analista de Vibrações—Categoria II—Manual do Curso Técnico (Vibration Analyst—Category II—Technical Course Manual)*. Available online: <http://www.specman.pt/cat-ii.html> (accessed on 4 July 2019). (In Portuguese).
21. Pinelli, M.; Spina, P.R.; Venturini, M. Gas Turbine Health State Determination: Methodology Approach and Fiels application. *Int. J. Rotating Mach.* **2012**, *2012*, 142173. [CrossRef]
22. Hunter, I.; Daleo, J.; Wilson, J.; Ellison, K. Analysis of hot section failures on gas turbines in process plant service. In *Proceedings of the 28th Turbomachinery Symposium*; Turbomachinery Laboratories, Texas A&M University: Houston, TX, USA, 1999.
23. Kim, C.J. Identification of Symptom Parameters for Failure Anticipation by Timed-Event Trend Analysis. *IEEE Power Eng. Rev.* **2000**, *20*, 48–50. [CrossRef]
24. Det Norske Veritas (DNV). *Guidance for Condition Monitoring*; Classification Notes; Det Norske Veritas (DNV): Høvik, Norway, 2003.
25. Al-Ibrahim, A.M.; Vambam, A. A Review of Inlet Air-cooling Technologies for Enhancing the performance of Combustion Turbines in Saudi Arabia. *Appl. Therm. Eng.* **2010**, *30*, 1879–1888. [CrossRef]

