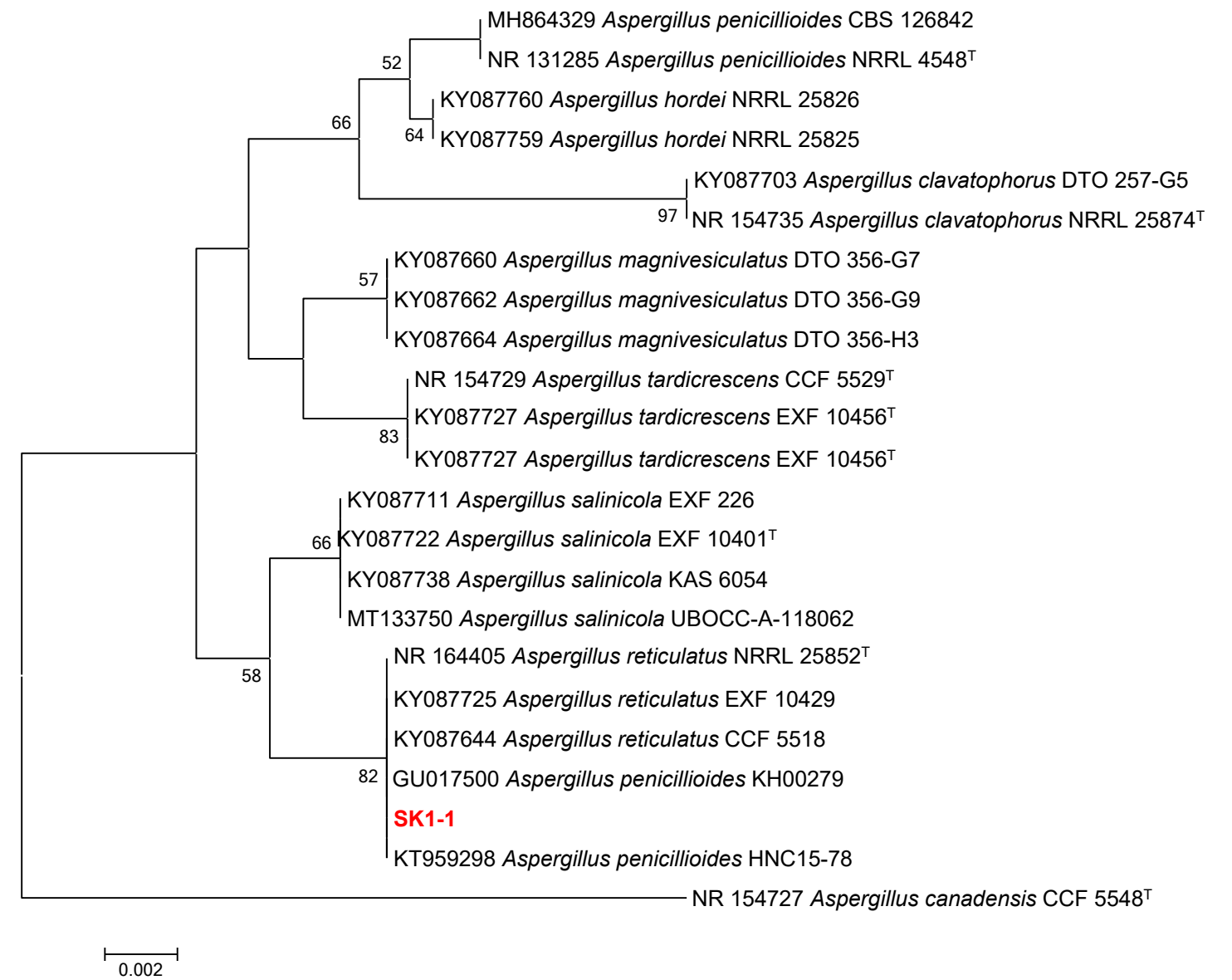


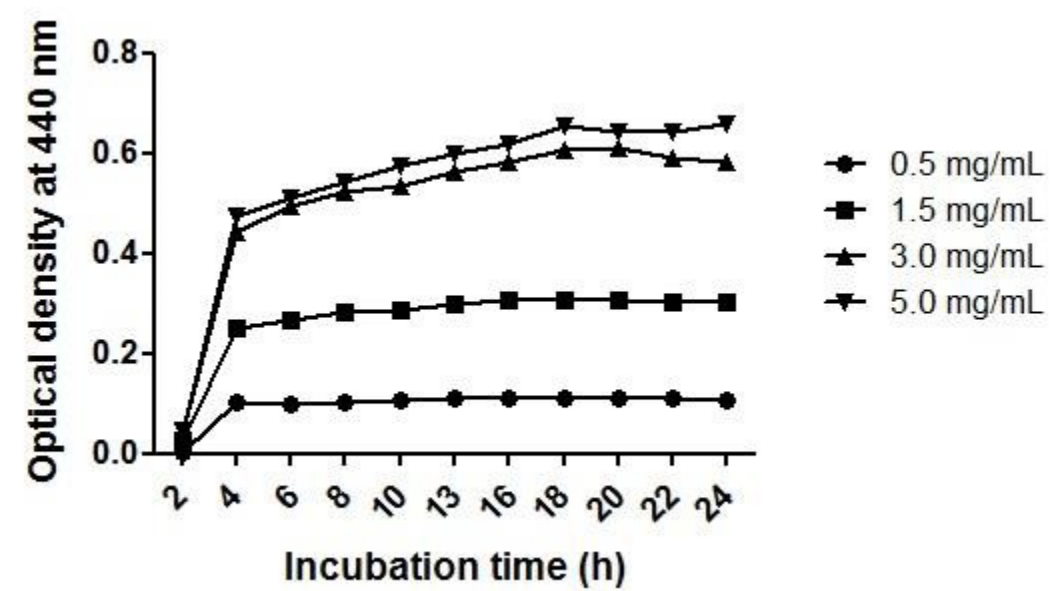
Supplementary Figure S1



Supplementary Figure S1. A neighbor-joining phylogenetic analysis using ITS sequences

Numbers at nodes indicate percent bootstrap values from 1,000 replications (values <50% are not shown). The scale bar indicates the number of nucleotide substitutions per site. SK1-1 was grouped with *A. reticulatus* and *A. penicilliioides*. “T” next to the strain name indicates a type strain of the species.

Supplementary Figure S2



Supplementary Figure S2. Calibration curve for proteolytic assays using azocasein

The incubation time (t_{\max}) to achieve the maximum optical density was determined by examining optical densities of a substrate-enzyme mixture at different azocasein concentrations (0.5, 1.5, 3.0, and 5.0 mg/mL). The optical densities were measured at 2-h intervals during 24 h.