

Figure S1. Immunolocalization of PIP2;1 aquaporins on cross-sections from root basal part of 8-day-old barley plants untreated (**A**) and in treated with *Pseudomonas mandelii* IB-Ki14 (**B**). The scale bar is 100 μ m. CC – central cylinder, EN – endodermis, C – cortex, EX – exodermis.

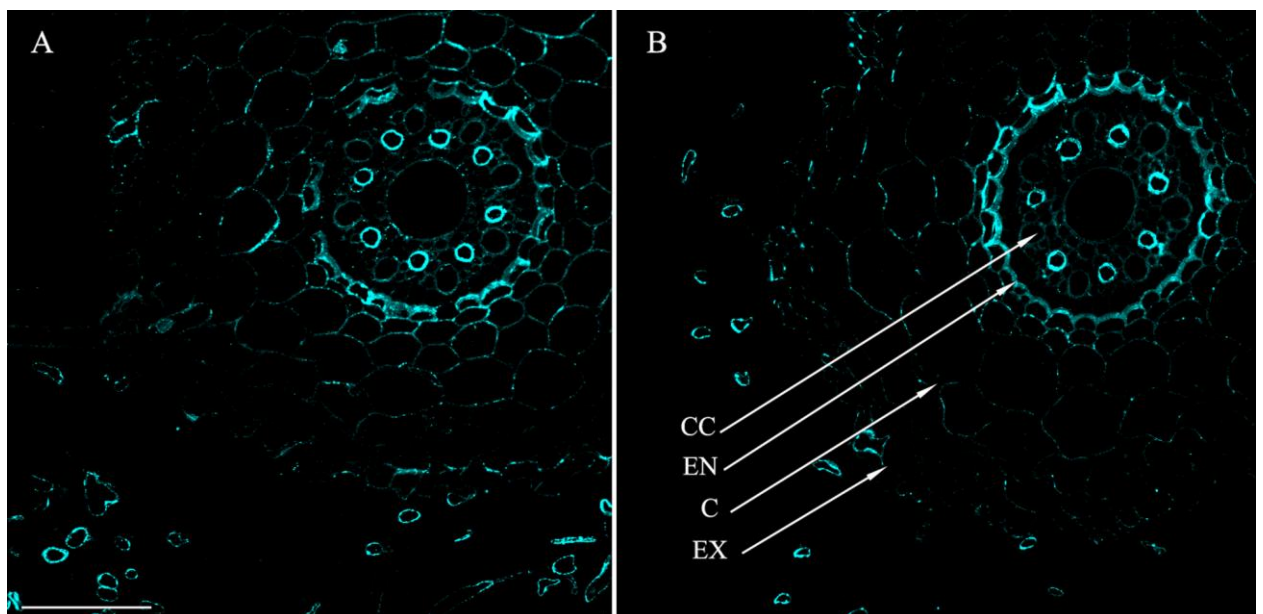


Figure S2. Immunolocalization of PIP2;2 aquaporins on cross-sections from root basal part of 8-day-old barley plants untreated (**A**) and in treated with *Pseudomonas mandelii* IB-Ki14 (**B**). The scale bar is 100 μ m. CC – central cylinder, EN – endodermis, C – cortex, EX – exodermis.