

Figure S1. Rarefaction curves of bacterial richness of each sample

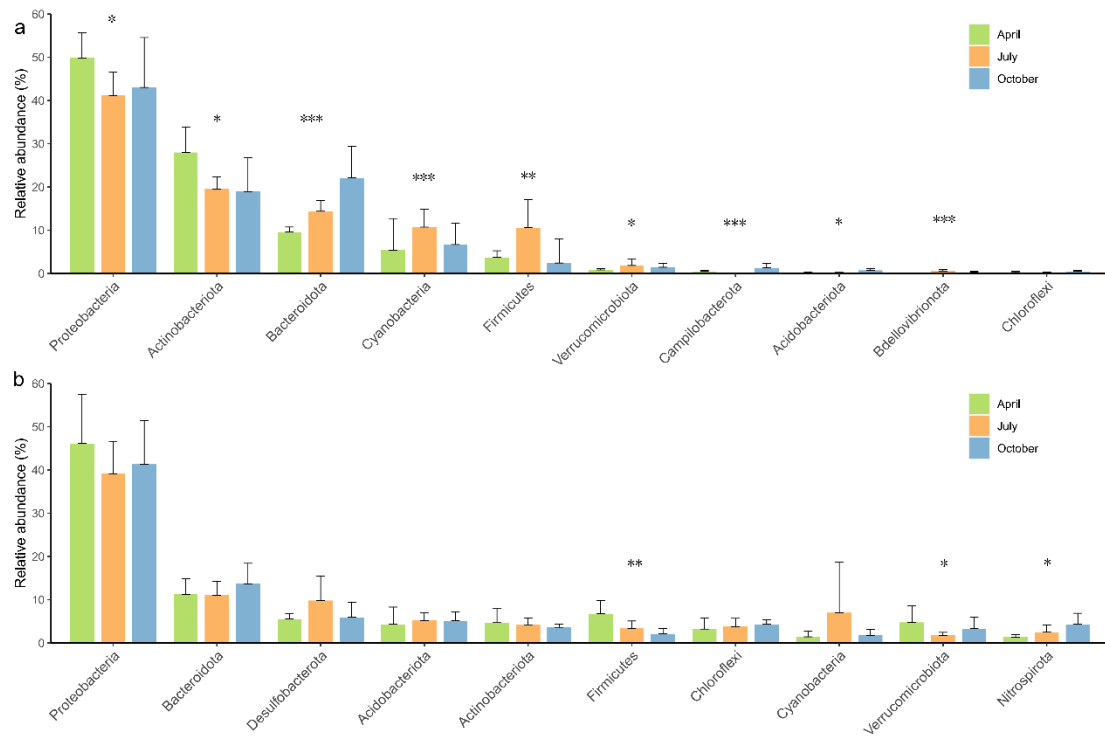


Figure S2. Relative abundance of different phyla among the three sampling periods. (a) water samples, (b) sediment samples. * $p < 0.05$, *** $p < 0.001$, Kruskal-Wallis test.

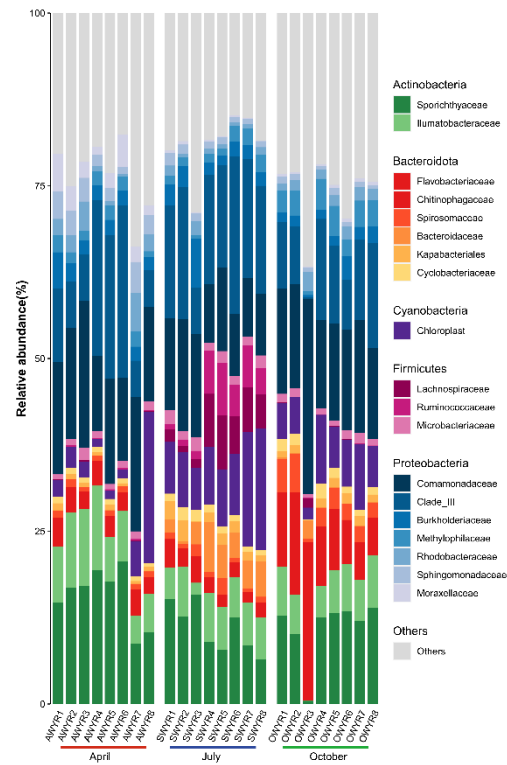


Figure S3. Relative abundances of the dominant bacterial families in water samples. Family with relative abundance <1% were defined as “other”.

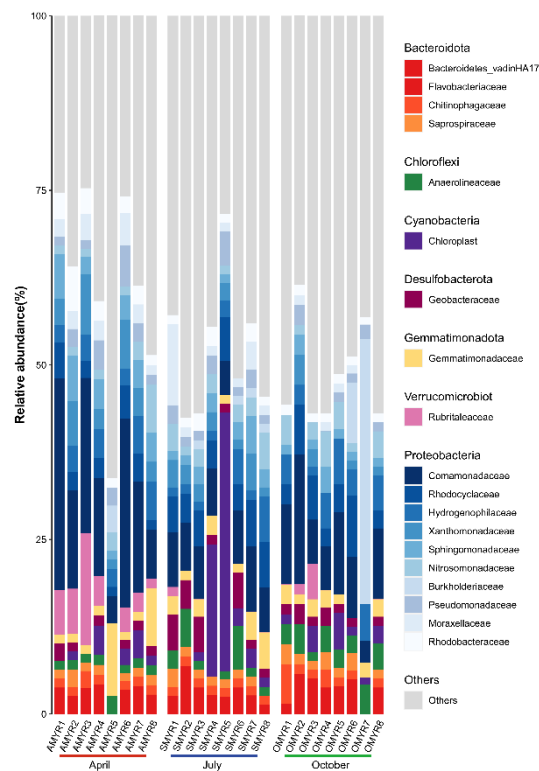


Figure S4. Relative abundances of the dominant bacterial families in sediment samples. Family with relative abundance <1% were defined as “other”.

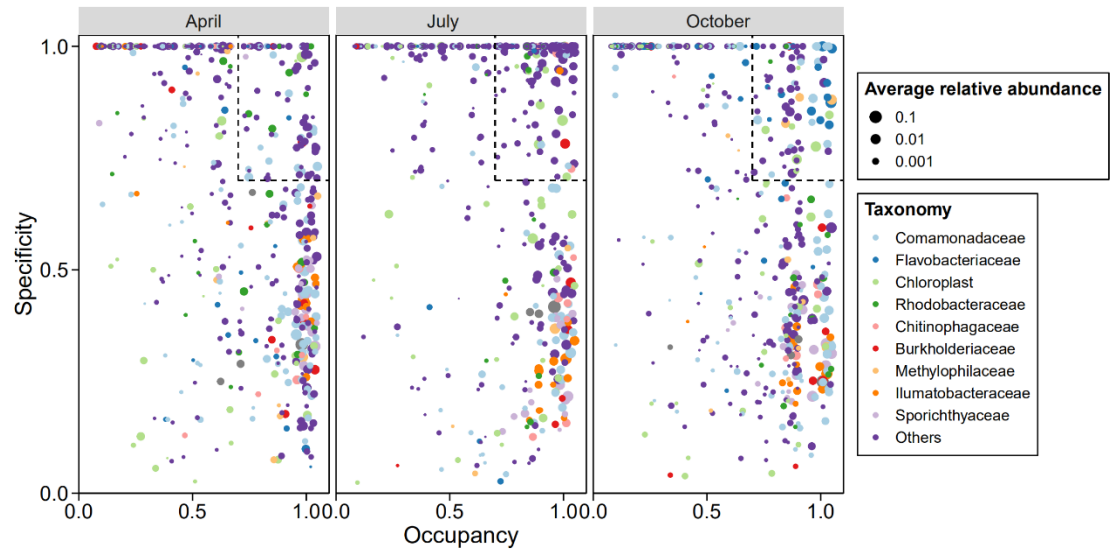


Figure S5. The SPEC-OCCU plots(a) over three sampling periods in water at the family level.

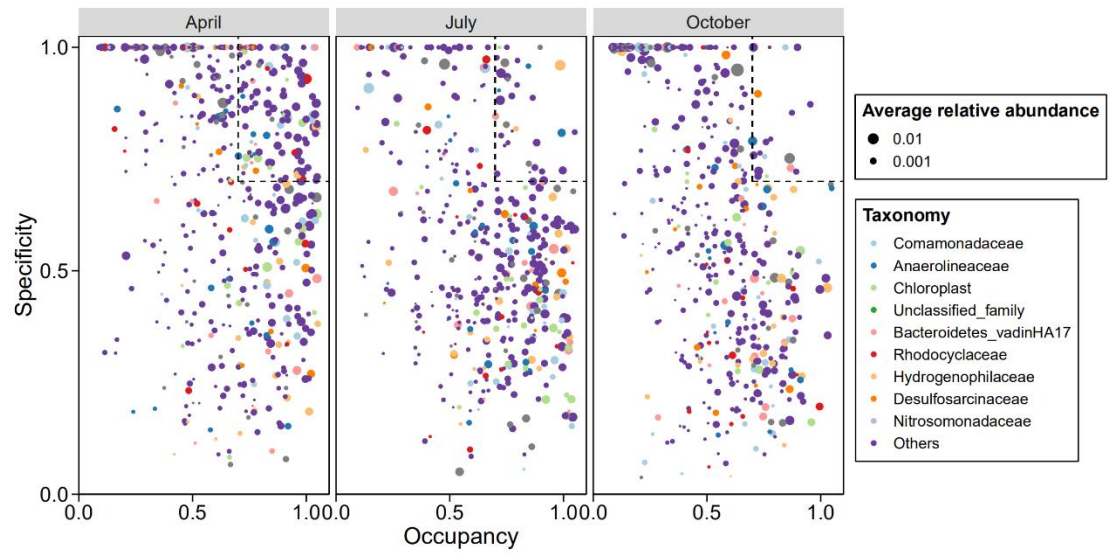


Figure S6. The SPEC-OCCU plots(a) over three sampling periods in sediment at the family level.