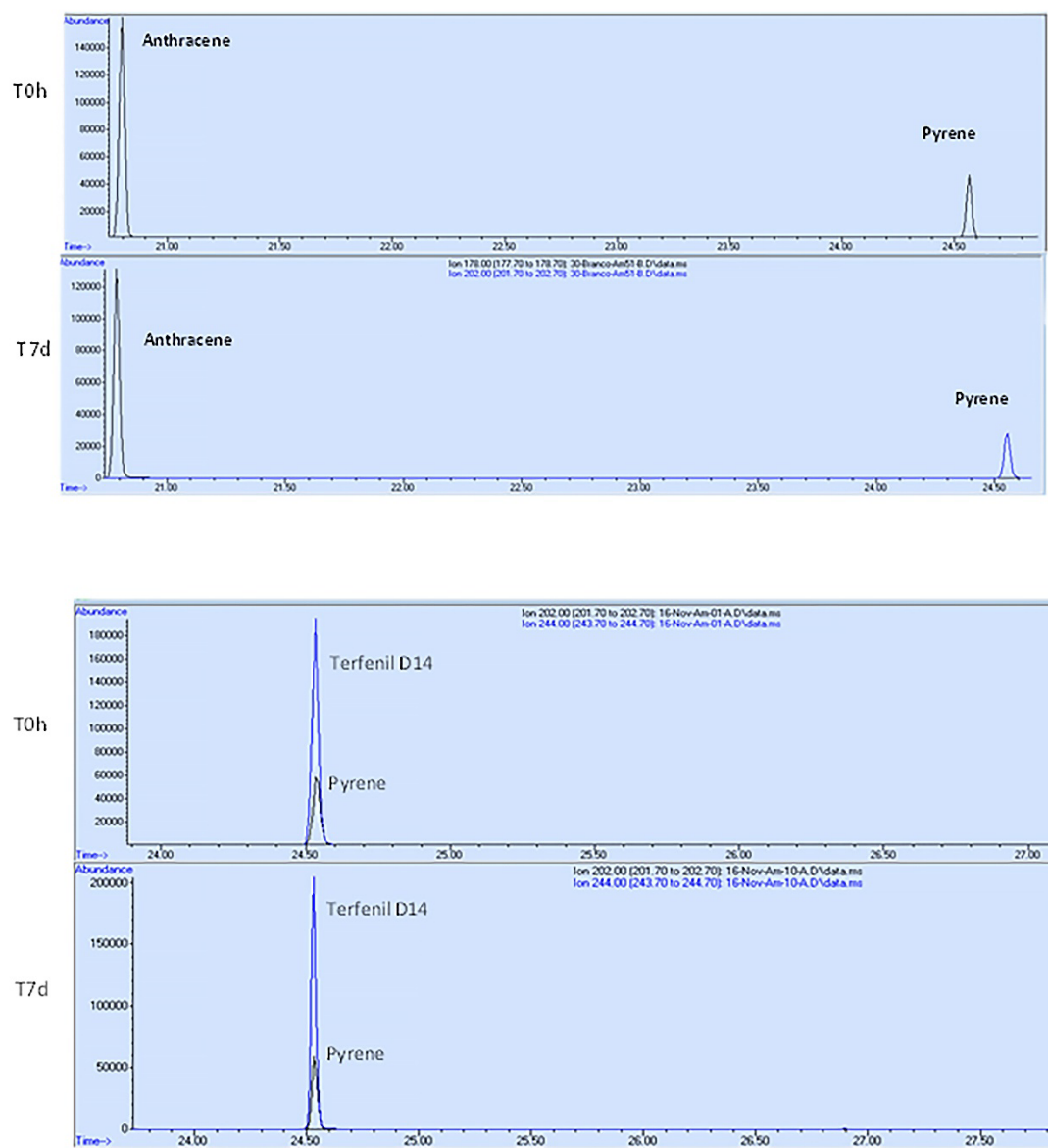


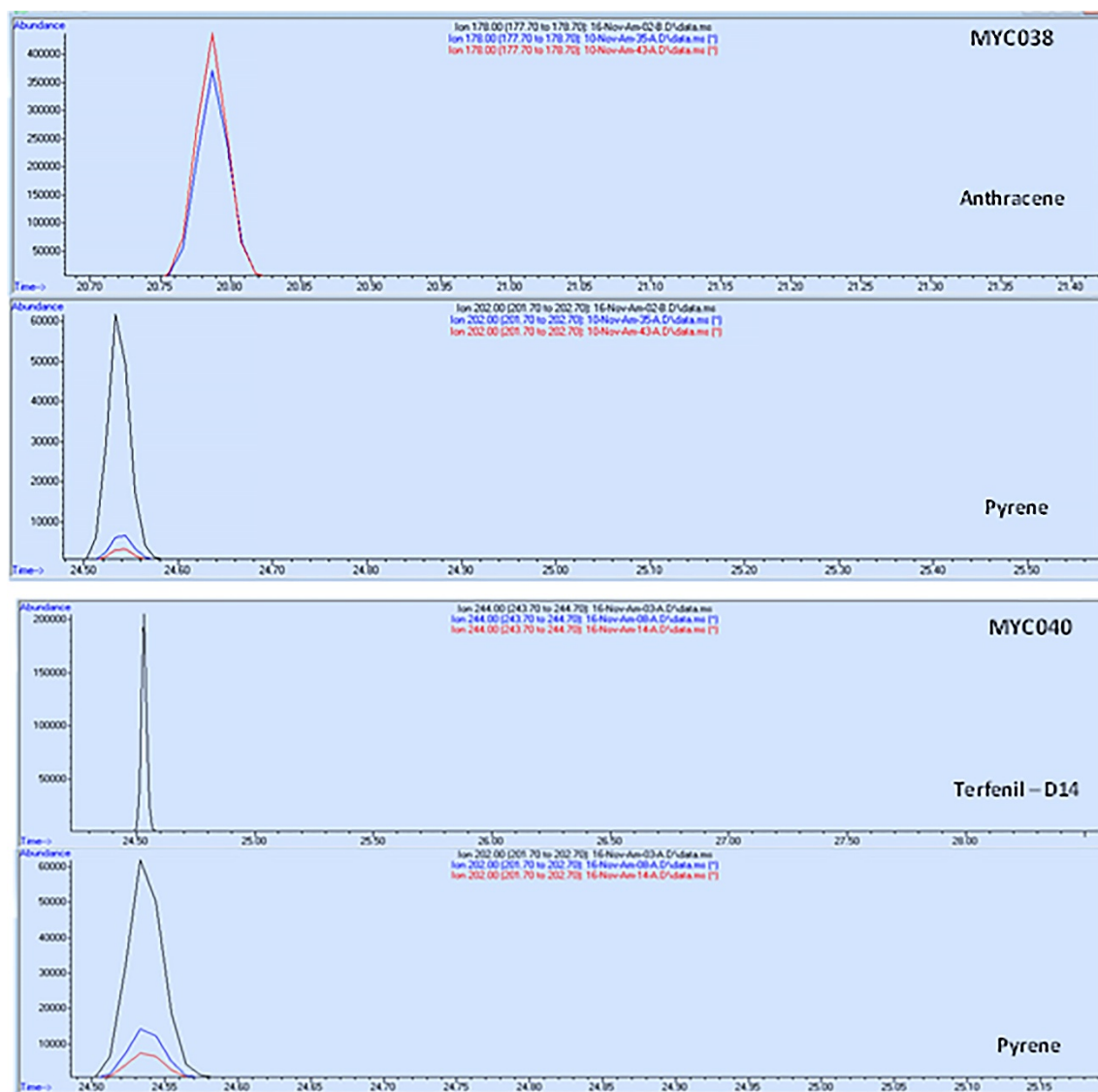
Supplementary Figure S1: CG/MS chromatograms of negative controls. (A) BH medium, pyrene and peptone, (B) BH medium, pyrene. Times: T0h and T7 days.



A- Ion 178 – anthracene (internal standard) and ion 202- pyrene.

B- Ion 244 – Terfenil – D14 (internal standard) and ion 202- pyrene.

Supplementary Figure S2: CG/MS chromatograms of pyrene biodegradation by MYC038 (A) and MYC040 (B) with internal standard. Times: T0h, T3d and T7days.



Supplementary Table S1: List of primers used in this study.

Target gene	Primer	Sequence (5'- 3')	Fragment size (bp)	Reference
<i>nidA</i>	NidAF	ATGACCACCGAAACAACCGGA	1368	Miller <i>et al.</i> , 2004
	NidAR	TCAAGCACGCCCGCCGAATGC		
<i>nidA</i>	GPF	CGGCGCCGACAAYTTYGTNNG	262	Cébron <i>et al.</i> , 2008
	GPR	GGGGAACACGGTGCCRTGDATRAA		
<i>nidA3</i>	nidA3fw	CCTGATGCGACGACAATG	1392	Debruyne <i>et al.</i> , 2012
	nidA3rv	TCATACGTTCTCATCCCTTCTC		
<i>nidB</i>	NidBF	ATGAACGCGGTTGCGGTCGAT	510	Miller <i>et al.</i> , 2004 / This study
	NidBR	CTACAGGACTACCGACAGGTT		
<i>nidB3</i>	NidB3F	ACGACAACGGTGCCGCAG	527	This study
	NidB3R	AGGTTGTGCGTGGGCAAC		
<i>nidB2</i>	NidB2F	TTGGGTGGGCGCGATCGCGCAC	226	This study
	NidB2R	CAGCAACTCCCACCGGCCGCTG		
<i>cyp151</i>	RP1F1	AGCTGGATCCTCAACAAG	209	Brezna <i>et al.</i> , 2006
	RP1F2	TCATCGCGATCATGCTC		
<i>cyp150</i>	Fm10F1	CCCTACTTCGATCACCTGCGC	1015	Brezna <i>et al.</i> , 2008
	Fm10R2	CCGAACGCGATGTGCTCGCG		