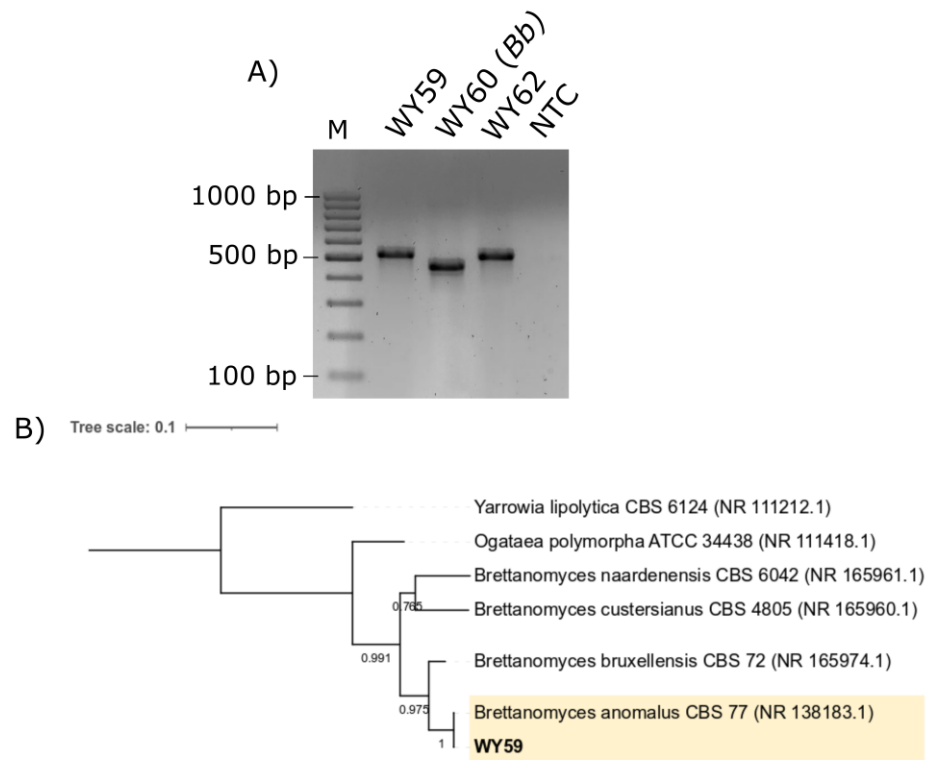


Sour beer as bioreservoir of novel craft ale yeast cultures

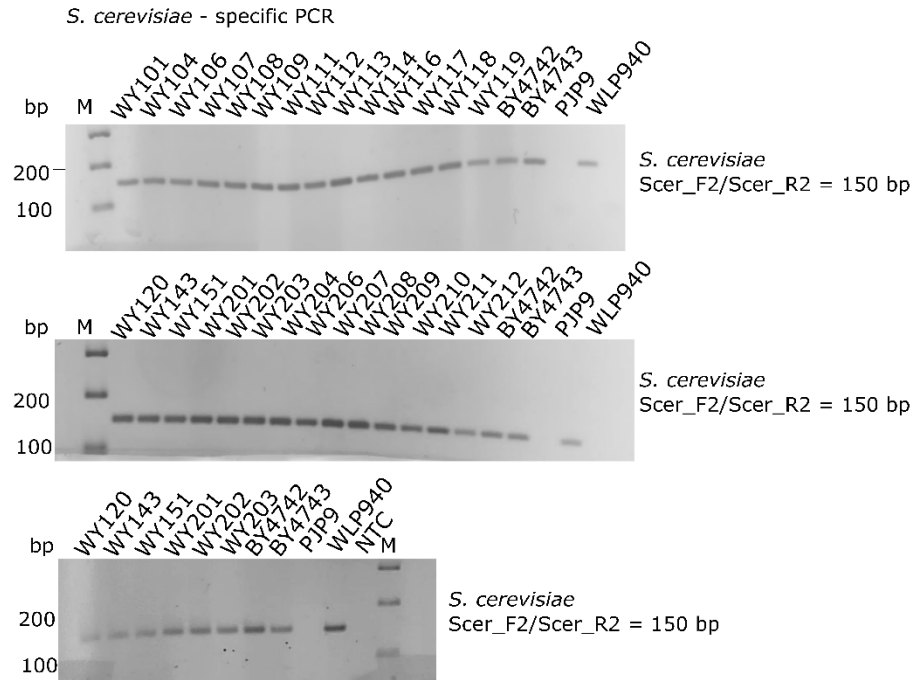
Chiara Nasuti ¹, Jennifer Ruffini ¹, Laura Sola ², Mario Di Bacco ³, Stefano Raimondi ², Francesco Candeliere ², Lisa Solieri ^{1,4,*}

- 1 Department of Life Sciences, University of Modena and Reggio Emilia, Via Amendola, 2-Pad. Besta, 42122 Reggio Emilia, Italy; chiara.nasuti@unimore.it (C.N.); 227818@studenti.unimore.it (J.R.)
 - 2 Department of Life Sciences, University of Modena and Reggio Emilia, Via Campi 51, 41125 Modena, Italy; laura.sola@unimore.it (L.S.); stefano.raimondi@unimore.it (S.R.); francesco.candeliere@unimore.it (F.C.)
 - 3 Ca' Del Brado Brewery, Via Andrea Costa, 146/2, 40065 Rastignano, Italy; quark@cadelbrado.it
 - 4 National Biodiversity Future Center (NBFC), 90133 Palermo, Italy
- * Correspondence: L.S.: lisa.solieri@unimore.it; Tel.: +39 0522522026

Supplementary Data

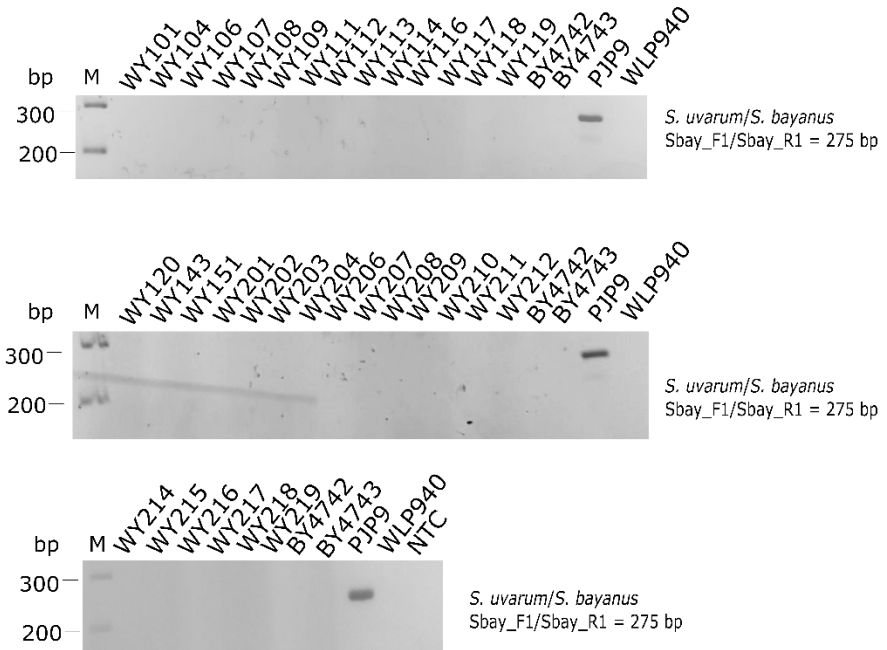


Supplementary Figure S1. Analysis of ITS region in *D. anomala* isolates. (A) Electrophoretic gel of ITS amplicons. *D. bruxellensis* strain WY60 was used as reference strain. (B) Phylogenetic tree obtained by neighbor joining (NJ) method [1] applied to a dataset of 7 rDNA sequences. The evolutionary distances were calculated by the Tamura 3-parameter method [2] considering the number of nucleotide substitutions per site. The gamma distribution was used to model the rate of change between sites. All positions containing gaps and missing data were eliminated (complete deletion option). The percentage of replicate trees in which the associated taxa clustered together in the bootstrap test [3] (1000 replicates) are shown next to the branches. The strain collected in this study is shown in bold. The lengths of the branches are proportional to the number of nucleotide substitutions, and they have been measured using the divergence scale shown at the top left. The tree was rooted using *Yarrowia lipolytica* as outgroup. The tree data (Newick) were generated with MegaX [4] and exported and visualized using ITOL [5]. Abbreviation: M: molecular size marker; Bb: *Brettanomyces bruxellensis*.



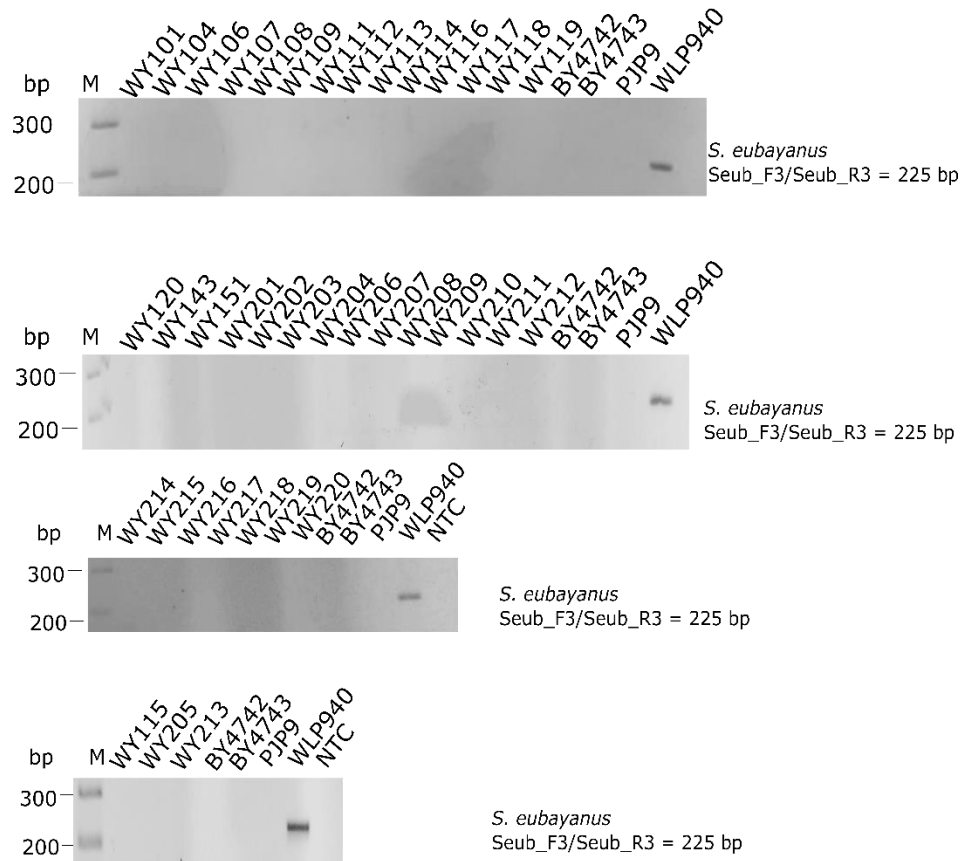
Supplementary Figure S2. *Saccharomyces cerevisiae*-specific PCRs of 35 isolates with pattern A in PCR-RFLP analysis of ITS regions. *S. cerevisiae*-specific PCR assay was carried out with Scer_F2/Scer_R2 primers targeting *MEX67* gene (amplicon size 150 bp). *S. cerevisiae* BY4742 and BY4743, *S. uvarum* PJP9, and lager strain WLP940 were used as internal control. Abbreviations: M, molecular weight marker; NTC, negative control.

S. bayanus - specific PCR

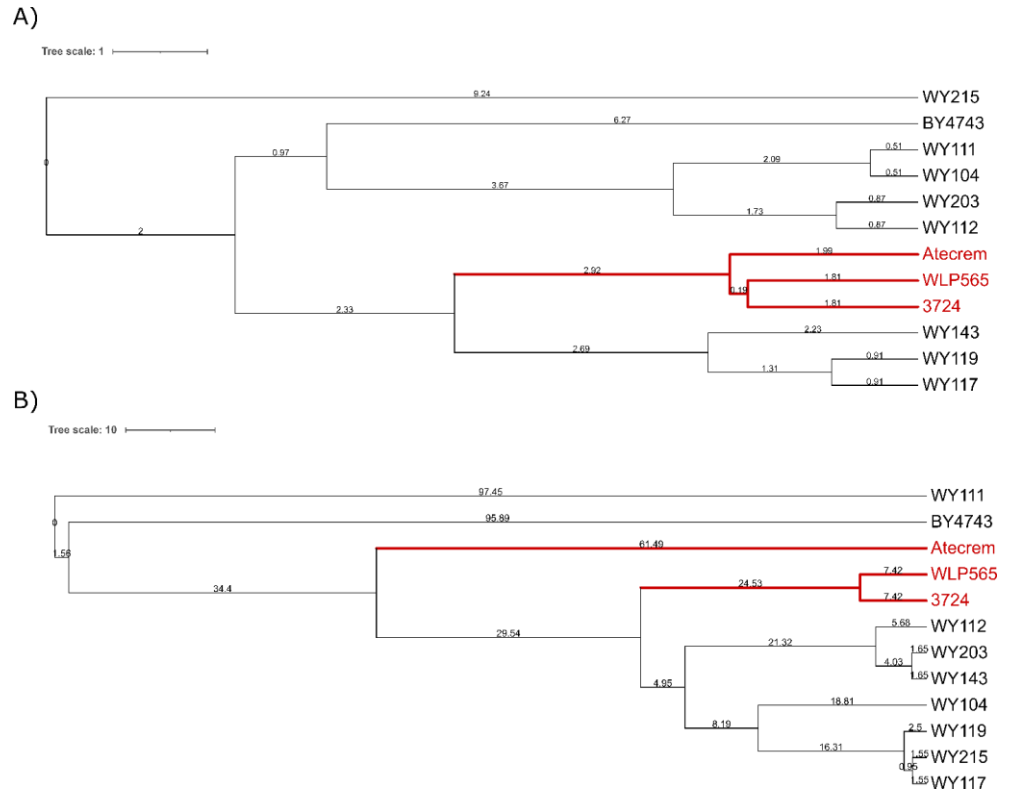


Supplementary Figure S3. *Saccharomyces bayanus*/*S. uvarum*-specific PCRs of 35 isolates with pattern A in PCR-RFLP analysis of ITS regions. *S. bayanus*-specific PCR assay was carried out with Sbay_F1/Sbay_R1 primers targeting *DBP6* gene (amplicon size 275 bp). *S. cerevisiae* BY4742 and BY4743, *S. uvarum* PJP9, and lager strain WLP940 were used as internal control. Abbreviations: M, molecular weight marker; NTC, negative control.

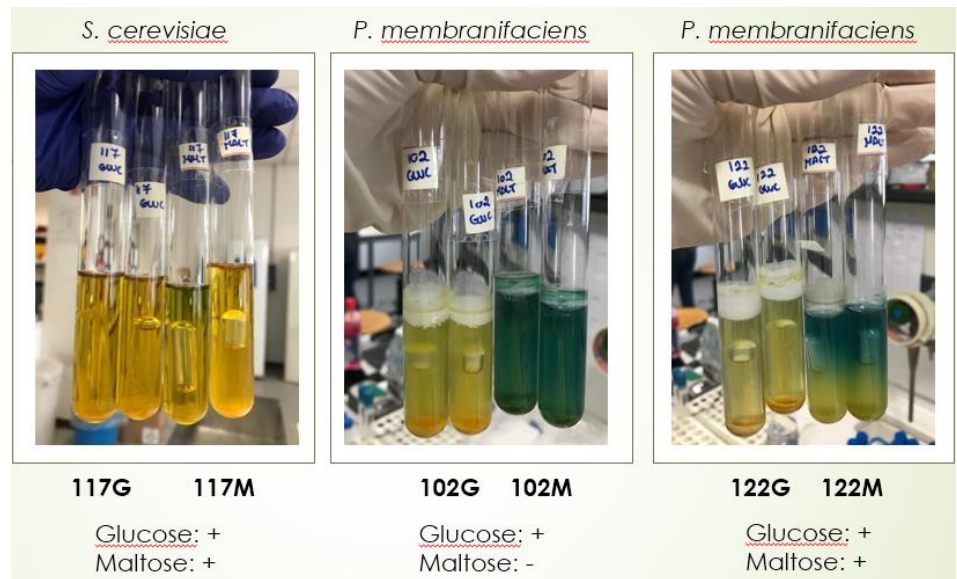
S. eubayanus - specific PCR



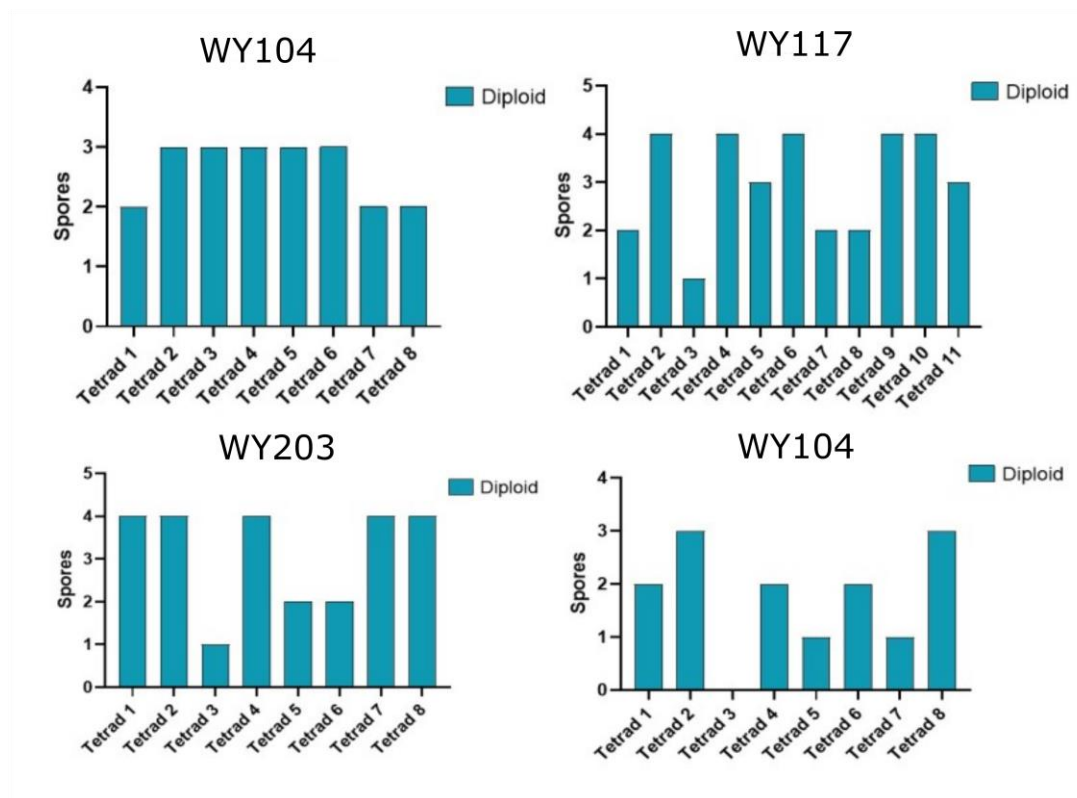
Supplementary Figure S4. *Saccharomyces eubayanus*-specific PCRs of 35 isolates with pattern A in PCR-RFLP analysis of ITS regions and of three putative *S. cerevisiae* x *S. uvarum* hybrids. *S. eubayanus*-specific PCR assay was carried out with Seub_F3/Seub_R3 primers targeting *FSY1* gene (amplicon size 228 bp). *S. cerevisiae* BY4742 and BY4743, *S. uvarum* PJP9, and lager strain WLP940 were used as internal control. Abbreviations: M, molecular weight marker; NTC, negative control.



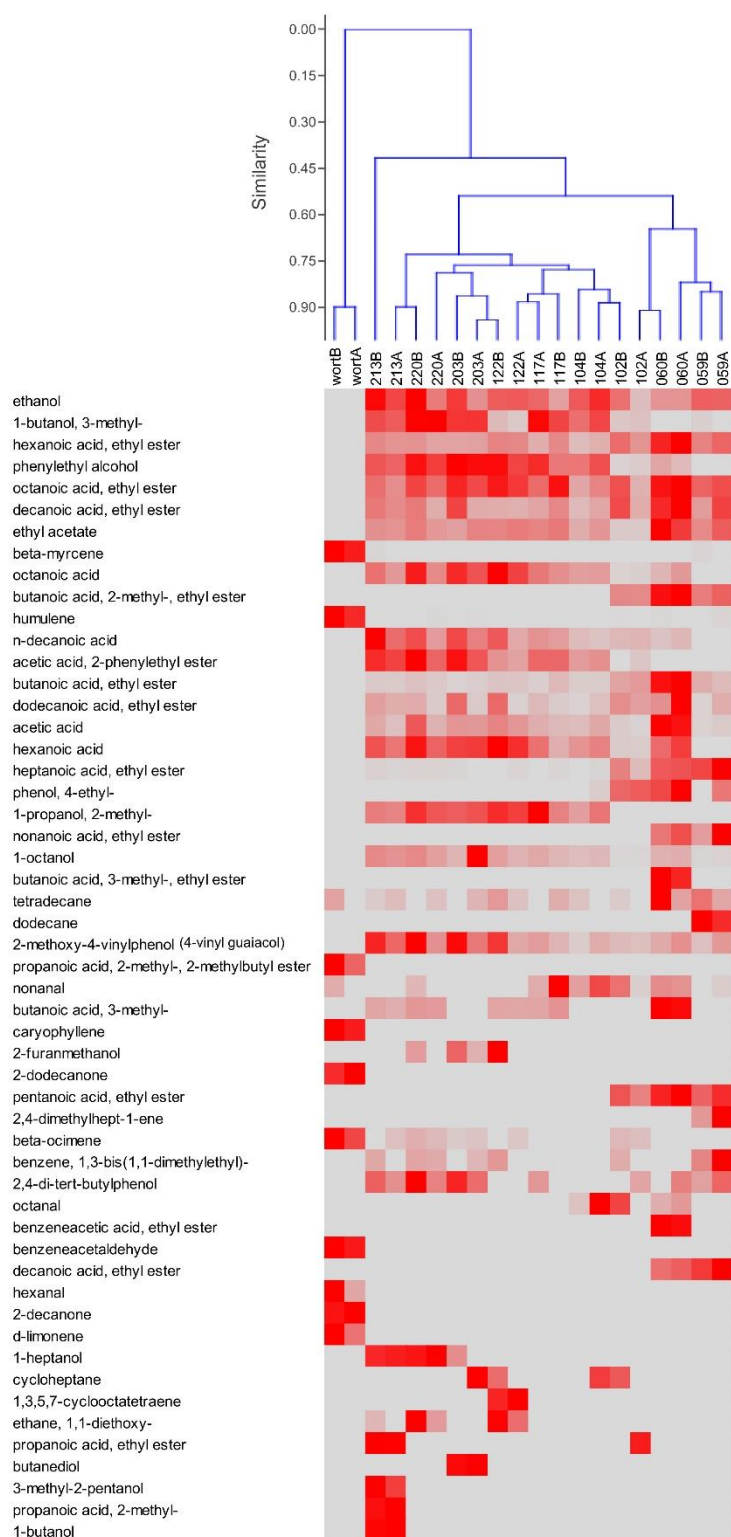
Supplementary Figure S5. Dendrograms generated using inter-delta PCR (A) and R3-RAPD PCR (B) fingerprints of 11 *S. cerevisiae* strains (7 indigenous wild strains isolated in this study from sour beer, 3 commercial starter cultures commonly used in the brewery plant, and BY4743 as reference strain). Commercial starters (in red) were detailed in Table 1. Similarity percentages were calculated using Pearson correlation coefficient, while hierarchical clustering analysis was carried out using the UPGMA (unweighted pair-group method with arithmetic mean) method with Bionumerics software. Numbers near the branches represent branch lengths. The tree data (Newick) were generated with MegaX [4] and exported and visualized using ITOL [5].



Supplementary Figure S6. Glucose and maltose fermentation test. Tubes containing Durham inverted tubes were photographed after 3 days of incubation at 27°C. Tests were carried out according to Kurtzman et al. [6]. Abbreviations: G, glucose; M, maltose.



Supplementary Figure S7. Mating type genotyping of four *S. cerevisiae* sour beer wild strains and their monosporic derivatives. For each strain at least 8 meiotic events (asci) were dissected.



Supplementary Figure S8. Distribution of the 53 volatile organic compounds (VOCs), identified in the headspace of the fermented wort samples. To highlight the differences between samples in terms of the presence of each single VOC, rather than the relative abundance of all VOCs in a single sample, the area values of each VOC were mean centered and normalized by the corresponding standard deviation. Values are reported as colors, ranging from the lowest of each lane (grey) to the highest (deepest red).

Supplementary Table S1. Primers, compound concentrations, and thermal conditions used this study.

Goal	Gene Target	Primer name	Sequence (5'→3')	Cycling conditions	Reaction mixture	Reference
					Vf Compounds (μL)	
Yeast identification	ITS region	ITS1	TCCGTAGGTGAACCTGCGG	95 °C for 5 min; (95 °C for 1 min, 55 °C for 2 min, 72 °C for 2 min) ³⁵ ; 72 °C for 10 min	1X Dream Taq Green [7] Buffer, 2.0 mM MgCl ₂ , 200 μM of each dNTP, 0.3 μM of each primer, 1 U of Dream Taq DNA polymerase, 100 ng DNA template	
		ITS4	TCCTCCGCTTATTGATATGC			
	26S LSU	NL1	GCATATCAATAAGCGGAGGAAAAG	94 °C for 5 min; 36 cycles of 40 94 °C for 1 min, 52 °C for 45 s, 72 °C for 2 min; final extension at 72 °C for 10 min	1X TaKaRa ExTaq [8] Buffer*, 2.0 μM MgCl ₂ , 200 μM of each dNTP, 0.3 μM of each primer, 1 U of TaKaRa ExTaq DNA polymerase, and 100 ng of template DNA	
		NL4	GGTCCGTGTTTCAAGACGG-			
	DBP6	Sbay_F1 Sbay_R1	GCTGACTGCTGCTGCTGCCCCCG TGTTATGAGTACTTGGTTTGTCTG	95°C for 3 min, (95°C for 30 20 sec, 58°C for 30 sec, 72°C for 1 min) ³⁵ ; 72°C for 7 min	1X Dream Taq Green [9] Buffer, 2 mM MgCl ₂ , 200 μM of each dNTP, 0.4 μM of Sbay_F1, 0.8 μM Sbay_R1, 0.5U Dream Taq DNA polymerase, 50 ng DNA template	
	MEX67	Scer_F2 Scer_R2	GCGCTTTACATTTCAGATCCCGAG TAAGTTGGTTGTCAGCAAGATTG	95°C for 3 min, (95°C for 30 20 sec, 58°C for 30 sec, 72°C for 1 min) ³⁵ ; 72°C for 7 min	1X Dream Taq Green [9] Buffer, 2 mM MgCl ₂ , 200 μM of each dNTP, 0.4 μM of each primer, 0.5U Dream Taq DNA	

	<i>FSY1</i>	Seub_F3 Seub_R3	GTCCCTGTACCAATTTAATATTGCGC TTTCACATCTCTTAGTCTTTTCCAGAC G	95°C for 3 min, (95°C for 30 sec, 60°C for 30 sec, 72°C for 1 min) ³⁵ ; 72°C for 7 min	polymerase, 50 ng DNA template 1X Dream Taq Green [9] Buffer, 2 mM MgCl ₂ , 200 µM of each dNTP, 0.4 µM of each primer, 0.5U Dream Taq DNA polymerase, 50 ng DNA template
Yeast genotyping	Microsatellite (GTG) ₅	(GTG) ₅	GTGGTGGTGGTGGTG	94 °C for 5 min; (94 °C for 15 s, 55 °C for 45 s, 72 °C for 1.30 min) ⁴⁰ ; 72 °C for 4 min	1X Dream Taq Green [10] Buffer, 3 mM MgCl ₂ , 200 µM of each dNTP, 0.6 µM of primer, 200 mM BSA, 0.5U Dream Taq DNA polymerase, 50 ng DNA template
	Random DNA	R3	ATGCAGCCAC	94°C for 4 min; (94°C for 25 sec, 42 C for 30 sec, 72 °C for 90 sec); 72°C for 5 min	1X Dream Taq Green [11] Buffer, 3.0 mM MgCl ₂ , 200 µM of each dNTP, 1 µM of primer, 0.5 U/µL of Dream Taq DNA polymerase, 50 ng DNA template
	Transposable elements Ty2	d12 d21	TCAACAATGGAATCCCAAC CATCTTAACACCGTATATGA	95°C for 5 min; (95°C for 30 s min, 46°C for 30 s, 72°C for 90 s) ³⁵ ; 72°C for 10 min	1X Dream Taq Green [12] Buffer, 2.5 mM MgCl ₂ , 200 µM of each dNTP, 1 µM of primer, 0.625U Dream Taq DNA polymerase, 50 ng DNA template
<i>STA1</i>	<i>STA1</i>	SD-5A SD-6B	CAACTACGACTTCTGTCATA GATGGTGACGCAATCACGA	95°C for 3 min; (95°C for 30 sec, 60°C for 30 sec, 72°C for 1 min) ³⁵ ; 72°C for 7 min	1X Dream Taq Green [13] Buffer, 2 mM MgCl ₂ , 200 µM of each dNTP, 0.4 µM of primer, 0.5U Dream Taq DNA

	STA1 UAS2 promoter	STA1_UAS_Fw STA1_UAS_Rv	CCTGGCTCAAATTAACTTTTCG ACCACCAATAGGCAATAGAAA	95°C for 3 min; (95°C for 30 sec, 56°C for 30 sec, 72°C for 1 min) ³⁵ ; 72°C for 7 min	polymerase, 50 ng DNA template 1X Dream Taq Green [14] Buffer, 2 mM MgCl ₂ , 200 µM of each dNTP, 0.4 µM of primer, 0.5U Dream Taq DNA polymerase, 50 ng DNA template
LAB identification	16S rRNA	27f 1490r	TCCATTTACTCGAGAGTTTGATCCTGG CTCAG GGTTCCCCTAAGCTTACCTTGTTACG ACTTC	95 °C for 5 min; (95 °C for 1 min, 58 °C for 2.5 min, 72 °C for 2 min) ³⁰ ; 72 °C for 5 min	1X TaKaRa <i>ExTaq</i> [15] Buffer*, 2.0 µM MgCl ₂ , 200 µM of each dNTP, 0.2 µM of each primer, 1 U of TaKaRa <i>ExTaq</i> DNA polymerase, and 100 ng of template DNA
LAB genotyping	Microsatellite (GTG) ₅	(GTG) ₅	GTGGTG GTGGTG GTG	94 °C for 5 min; (94 °C for 15 s, 55 °C for 45 s, 72 °C for 1.30 min) ⁴⁰ ; 72 °C for 4 min	1X Dream Taq Green [16] Buffer, 3 mM MgCl ₂ , 200 µM of each dNTP, 0.6 µM of primer, 200 mM BSA, 0.5U Dream Taq DNA polymerase, 50 ng DNA template

Supplementary Table S2. *In silico* 16S-ARDRA profiles of the main beer LAB species.

Species	Accession number	<i>TruII</i> ¹	<i>HhaI</i>	<i>HinfI</i>
<i>Levilactobacillus brevis</i>	HM058775.1	467, 259, 252, 194, 134, 104, 86, 47, 26	367, 500, 571	274, 891, 85, 58
<i>Fructilactobacillus lindneri</i>	CP014907.1	109, 150, 44, 86, 48, 86, 252, 534	289, 528, 492	55, 976, 278
<i>Lentilactobacillus buchneri</i>	M58811	421, 252, 200, 194, 134, 123, 111, 86	400, 500, 580	785-540-135
<i>Lactiactobacillus casei</i>	D16551	464, 252, 239, 194, 134, 86, 81, 46, 26	580, 450, 400, 380, 210	1000, 145
<i>Loigolactobacillus coryniformis</i>	MF114100.1	465, 255, 206, 194, 156, 134, 86, 26	496, 528, 287	976, 277, 58
<i>Secundilactobacillus malefermentans</i>	NR_113822.1	505, 278, 86, 134, 44, 150, 111	1021, 287	493, 398, 274, 85, 58
<i>Latilactobacillus curvatus</i>	CP017124.1	593, 278, 161, 134, 86	528, 495, 287	976, 251, 58, 25
<i>Pediococcus damnosus</i>	D87678	423, 254, 206, 200, 137, 134, 86, 44, 13	528, 507, 287	976, 263, 58, 25
<i>Pediococcus acidilactici</i>	M58833	278, 243, 205, 194, 134, 120, 104, 86, 79, 47, 36	500, 400, 320, 260	710, 380, 190
<i>Pediococcus pentosaceus</i>	AB362986.1	278, 269, 243, 137, 134, 120, 104, 86, 80, 47, 44, 36, 13	528, 507, 287	1000, 145
<i>Pediococcus inopitalus</i>	AJ271383	395, 252, 247, 137, 134, 121, 96, 86, 44, 26, 13	507, 528, 287	976, 263, 58, 25
<i>Pediococcus parvulus</i>	D88528	395, 252, 182, 178, 150, 134, 86, 44, 26	568, 526, 345	976, 263, 58, 25

¹ Fragments were in bp.

Supplementary Table S3. ITS RFLP-PCR analysis of yeast isolates from natural sour beer.

Isolation condition	Strain	Amplicon size ¹	Restriction profile		Yeast-ID best matching (%)	Pattern
			<i>Hae</i> III	<i>Hin</i> fl		
YPDA 28 °C	WY201, WY202, WY203 , WY204, WY206, WY207, WY208, WY209, WY210, WY211, WY212, WY214, WY215, WY216, WY217, WY218, WY219, WY220	850	125, 170, 230, 325	110, 365, 375	<i>Saccharomyces cerevisiae</i> (100%)/ <i>Saccharomyces coriocanus</i> (100%)/ <i>Saccharomyces paradoxus</i> (100%)	A
	WY205 , WY213	850	125, 230, 495	150, 365, 375	<i>Saccharomyces bayanus</i> (89%)/ <i>Saccharomyces kudriavzevii</i> (89%)/ <i>Saccharomyces pastorianus</i> (89%)/ <i>Saccharomyces mikatae</i> (89%)	C
WL 28 °C	WY101, WY104 , WY106, WY107, WY108, WY109, WY111, WY112, WY113, WY114, WY116, WY117 , WY118, WY119, WY120, WY143, WY151	850	125, 170, 230, 325	110, 365, 375	<i>Saccharomyces cerevisiae</i> (100%)/ <i>Saccharomyces coriocanus</i> (100%)/ <i>Saccharomyces paradoxus</i> (100%)	A
	WY115	850	125, 230, 495	150, 365, 375	<i>Saccharomyces bayanus</i> (89%)/ <i>Saccharomyces kudriavzevii</i> (89%)/ <i>Saccharomyces pastorianus</i> (89%)/ <i>Saccharomyces mikatae</i> (89%)	C
	WY102 , WY103, WY105, WY110, WY121, WY122 , WY141, WY152	485	48, 84, 336	203, 282	<i>Pichia membranifaciens</i> (73%)	B
	WY59 , WY62	550	110, 400	95, 230	<i>Kluyveromyces blattae</i> (67%)	D
	WY60 , WY61	490	100, 350	210, 280	<i>Dekkera bruxellensis</i> (83%)	E

¹ Amplicons and restriction fragments were in bp.

References

1. Saitou, N.; Nei M. The neighbor-joining method: A new method for reconstructing phylogenetic trees. *Mol. Biol. Evol.*, **1987**, *4*, 406-425.
2. Tamura, K. Estimation of the number of nucleotide substitutions when there are strong transition-transversion and G + C-content biases. *Mol. Biol. Evol.* **1992**, *9*, 678-687.
3. Felsenstein, J. Confidence limits on phylogenies: An approach using the bootstrap. *Evolution*, **1985**, *39*, 783-791.
4. Kumar, S.; Stecher, G.; Li, M.; Knyaz, C.; Tamura, K. MEGA X: Molecular evolutionary genetics analysis across computing platforms. *Mol. Biol. Evol.* **2018**, *35*, 1547-1549
5. Letunic, I.; Bork, P. Interactive Tree of Life (iTOL) v4: Recent updates and new developments. *Nucleic Acids Res.* **2019**, *2*, 256-259.
6. Kurtzman, C.P., Fell, J.W., Boekhout, T.; Robert, V. Methods for isolation, phenotypic characterization and maintenance of yeasts. In *The yeasts*, 5th ed; Kurtzman, C.P.; Fell, J.W.; Boekhout, T., Eds.; Elsevier, Amsterdam, **2011**, pp. 87-110.
7. White, T.J.; Bruns, T.; Lee, S.; Taylor, J. Amplification and direct sequencing of fungal ribosomal RNA genes for phylogenetics. In *PCR Protocols: A Guide to Methods and Applications*; Innis, M.A., Gelfand, D.H., Sninsky, J.J., White, T.J., Eds.; Academic Press: San Diego, CA, USA, **1990**; pp. 315-322.
8. Kurtzman, C.P.; Robnett, C.J. Identification and phylogeny of ascomycetous yeasts from analysis of nuclear large subunit (26S) ribosomal DNA partial sequences. *Antonie Leeuwenhoek*, **1998**, *73*, 331-371.
9. Pengelly, R.J.; Wheals, A.E. Rapid identification of *Saccharomyces eubayanus* and its hybrids. *FEMS Yeast Res.*, **2013**, *13*, 156-161.
10. Dakal, T.C.; Solieri, L.; Giudici, P. Evaluation of fingerprinting techniques to assess genotype variation among *Zygosaccharomyces* strains. *Food Microbiol.* **2018**, *72*, 135-145.
11. Corte, L.; Lattanzi, M.; Buzzini, P.; Bolano, A.; Fatichenti, F.; Cardinali, G. Use of RAPD and killer toxin sensitivity in *Saccharomyces cerevisiae* strain typing. *J. Appl. Microbiol.* **2005**, *99*, 609-617.
12. Legras, J.-L.; Karst, F. Optimisation of interdelta analysis for *Saccharomyces cerevisiae* strain characterisation. *FEMS Microbiol. Lett.* **2003**, *221*, 2249-2255.
13. Yamauchi, H.; Yamamoto, H.; Shibano, Y.; Amaya, N.; Saeki, T. Rapid methods for detecting *Saccharomyces diastaticus*, a beer spoilage yeast, using the polymerase chain reaction. *J. Am. Soc. Brew. Chem.* **1998**, *56*, 58-63.
14. Krogerus, K.; Magalhães, F.; Kuivanen, J. *et al.* A deletion in the *STA1* promoter determines maltotriose and starch utilization in *STA1+* *Saccharomyces cerevisiae* strains. *Appl Microbiol Biotechnol.* **2019**, *103*, 7597-7615.
15. Lane, D. J. 16S/23S rRNA sequencing. In *Nucleic Acid Techniques in Bacterial Systematics*; Stackebrandt, E.; Goodfellow, M., Eds; John Wiley & Sons: New York, NY, USA, **1991**; pp. 115-175.
16. Solieri, L.; Bianchi, A.; Giudici, P. Inventory of non-starter lactic acid bacteria from ripened Parmigiano-Reggiano cheese as assessed by a culture dependent multiphasic approach. *Syst. Appl. Microbiol.* **2012**, *35*, 270-277.