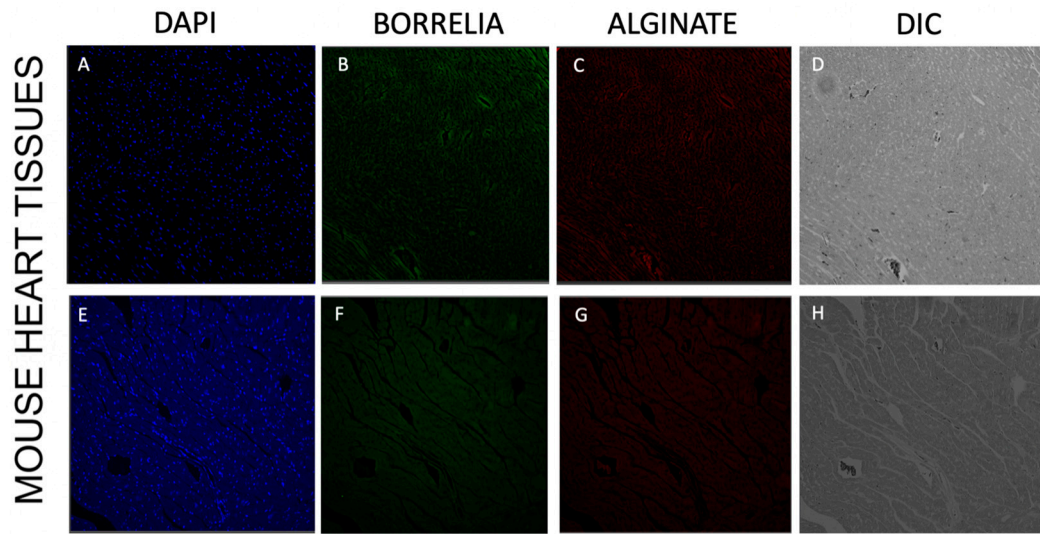
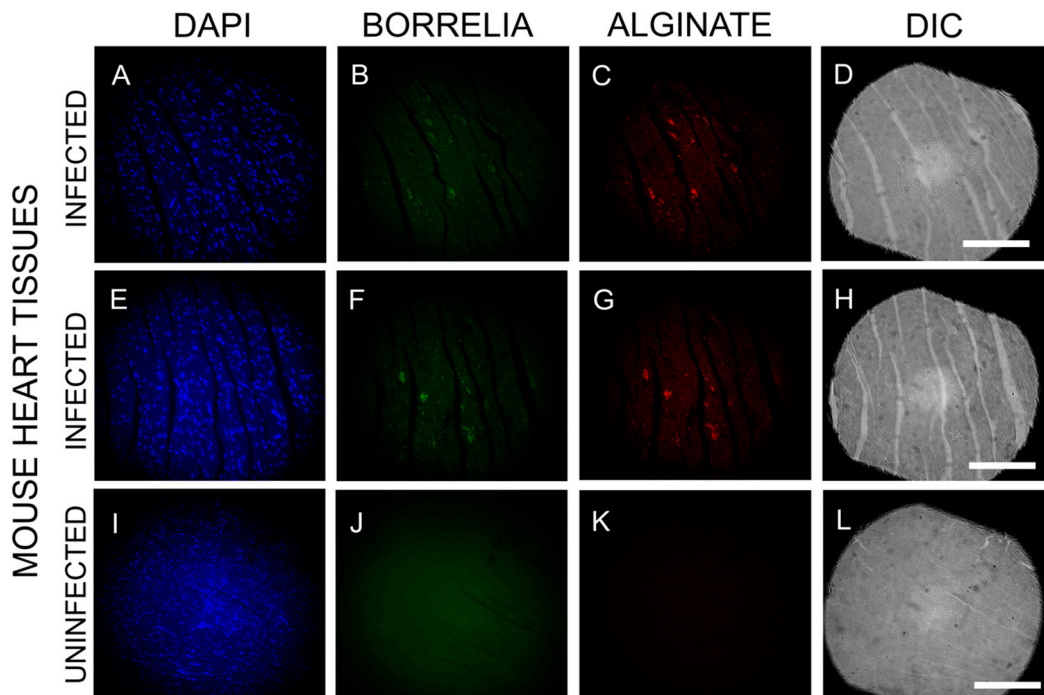


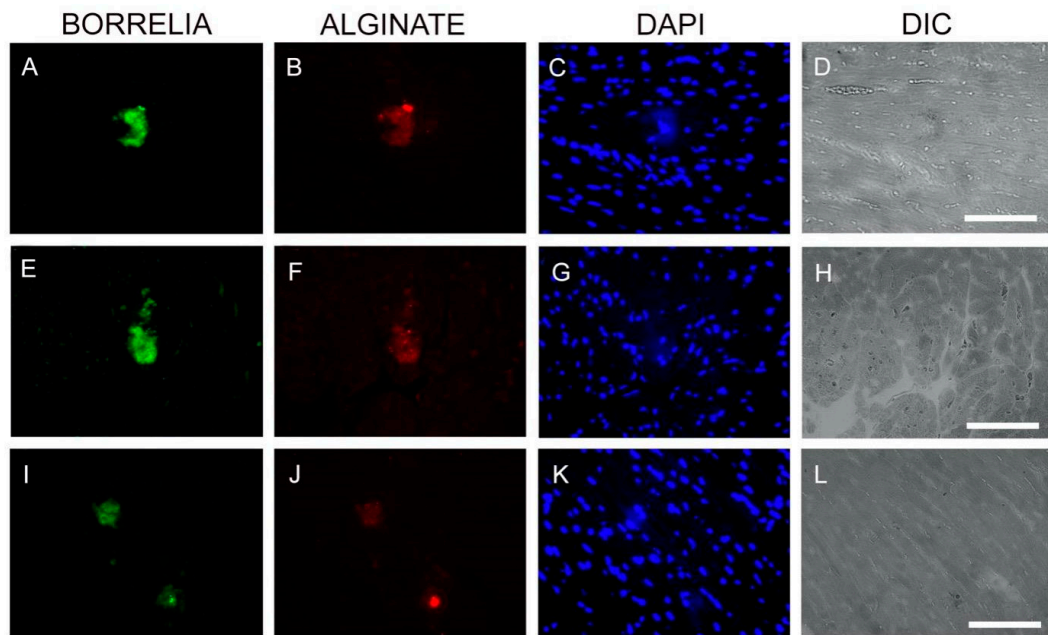
### Supplementary Figures



**Figure S1.** Representative images of IHC staining of normal mouse heart tissues. Panels (A,E) show the DAPI staining for nuclear DNA. Panels (B,F) show the absence of *B. burgdorferi*-specific staining while Panels (C,G) show the absence of alginate-specific staining on those normal mouse heart sections. Panels (D,H) show the structure of the tissue by differential interference contrast microscopy (DIC). Images were taken at 400 $\times$ .



**Figure S2.** Detection of *B. burgdorferi* biofilm in heart tissue sections of C3H/HeN infected and uninfected mice. Panels (B,F) show results using an anti-*B. burgdorferi* antibody (green). Panels (C,G) show results using an anti-alginate antibody (red). Panels (A,E,I) show DAPI staining for nuclear DNA. Panels (J,K) show negative control, uninfected mouse heart sections that were stained with the same *Borrelia* and alginate antibodies. Panels (D,H,L) show the structure of the tissues by DIC. Images were taken at 200 $\times$ . Bar: 200  $\mu$ m.



**Figure S3.** Detection of *B. burgdorferi* biofilm in heart tissue sections of C3H/HeN infected mice. Panels (A,E,I) show results using an anti-*B. burgdorferi* antibody (green). Panels (B,F,J) show results using an anti-alginate antibody (red). Panels (C,G,K) show DAPI staining for nuclear DNA. Panels (D,H,L) show the structure of the tissues by DIC. Images were taken at 400 $\times$ . Bar: 100  $\mu$ m.