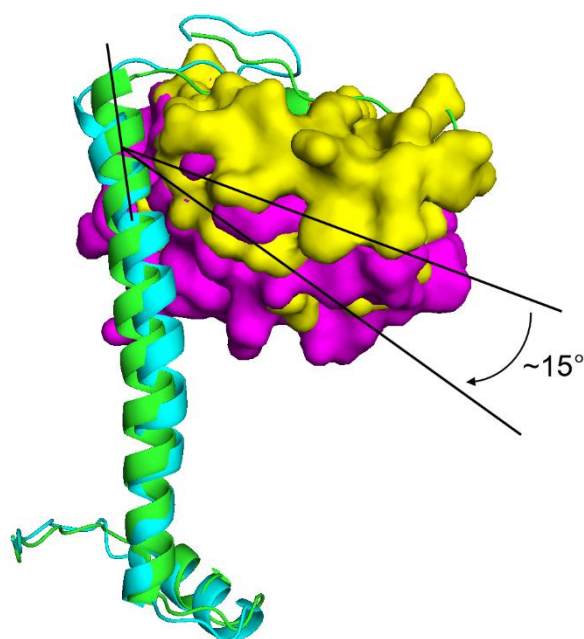
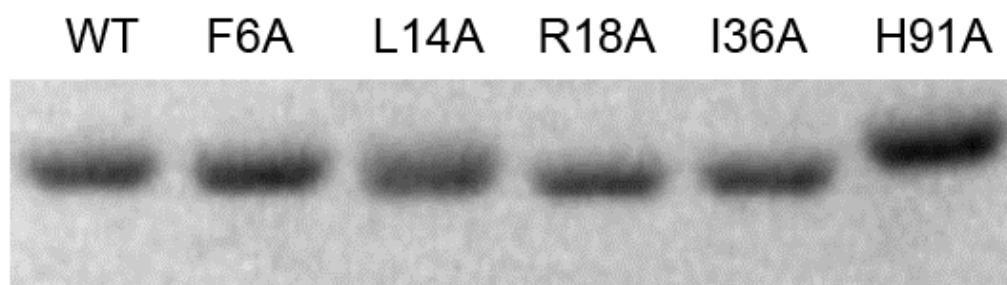


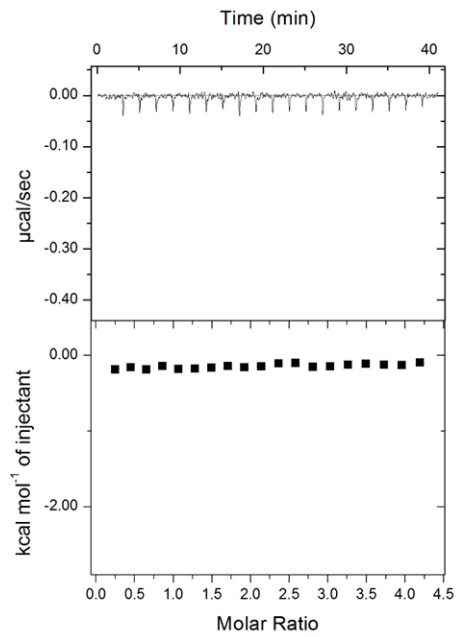
**Figure S1.** Structural superimposition of CopA<sub>So</sub> derived from the complex (green and cyan) with recently reported N-terminus (residues 1-49) of CopA<sub>So</sub> (PDB ID: 6IYA; light and heavy gray), revealing they have very similar structures.



**Figure S2.** Structural superimposition of CopA<sub>So</sub> (I) and (II) showing their corresponding ParE<sub>So</sub> molecules are bound by slightly different angles ( $\sim 15^\circ$ ).



**Figure S3.** Western blot of lysate from wild-type cells expressing His-tagged ParE<sub>SO</sub> variants. The total protein concentration of each sample was determined using the Bio-Rad protein-assay kit to confirm equal loading of lysate in each lane.



**Figure S4.** CopA<sub>so</sub> binding to the mutated 25-bp DNA duplex (5' TAAGGTATTACCTACCGG*ATG*TAAG-3') by ITC. The underline sequences are two reverted repeats in the promoter region and the last one is mutated to the italic sequence.