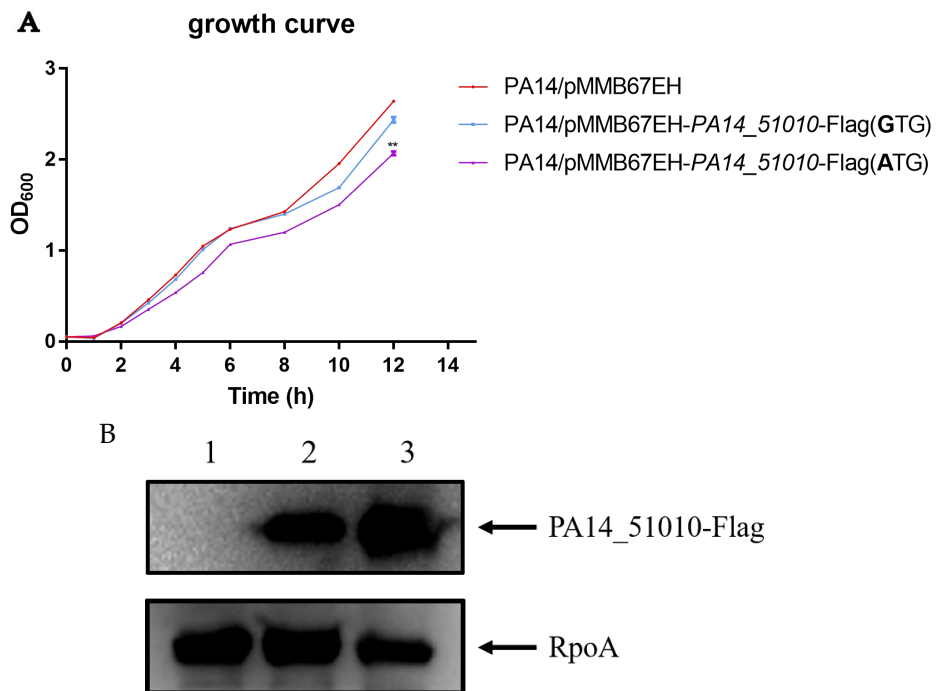


Figure S1



**Figure S1. Change of the start codon of the *PA14\_51010* gene from the original GTG to ATG reduced the bacterial growth rate.** (A) Wild type PA14 carrying pMMB67EH, pMMB67EH-*PA14\_51010*-Flag (GTG), pMMB67EH-*PA14\_51010*-Flag (ATG) were cultured in LB overnight and then diluted 1:100 in fresh LB with 1 mM IPTG. At indicated time points, the OD<sub>600</sub> of each of the samples was measured. \*\*,  $p < 0.01$  compared to the other samples by Student's t test. (B) Protein levels of the *PA14\_51010*-Flag in the aforementioned strains [1, PA14/pMMB67EH; 2, PA14/pMMB67EH-*PA14\_51010*-Flag(GTG); 3, PA14/pMMB67EH-*PA14\_51010*-Flag(ATG)]. The bacteria were cultured in LB with 1 mM IPTG to an OD<sub>600</sub> of 1.0. The Flag-tagged *PA14\_51010* were detected by western blot with an anti-Flag antibody (Sigma) and an anti-RpoA antibody (BioLegend).