

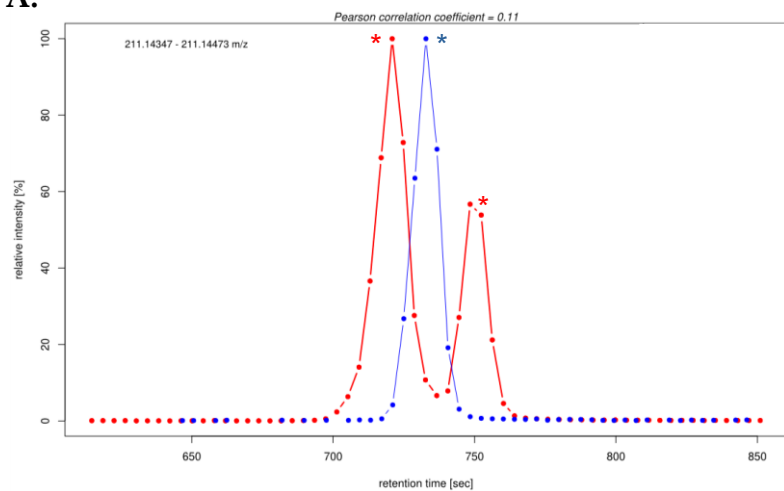
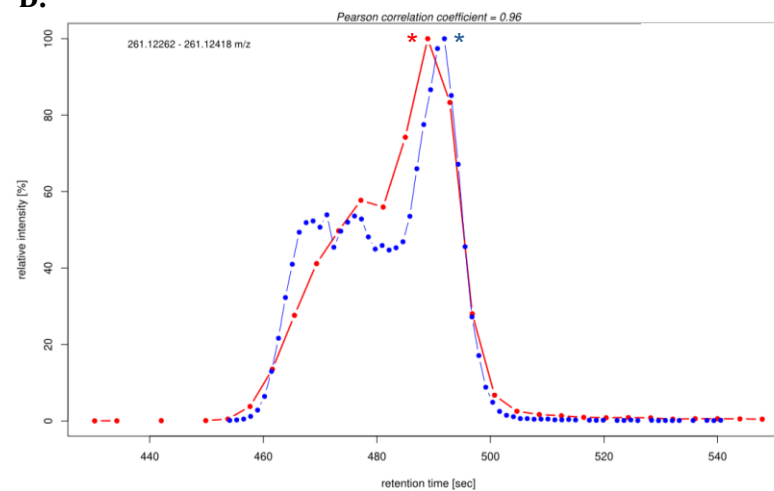
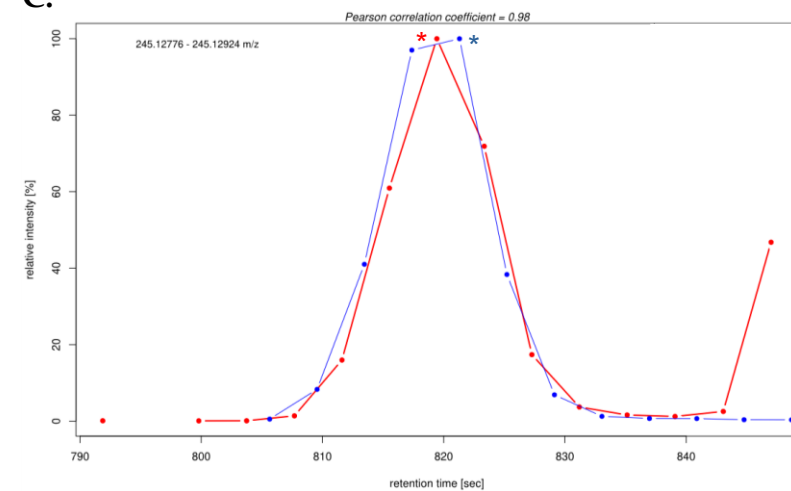
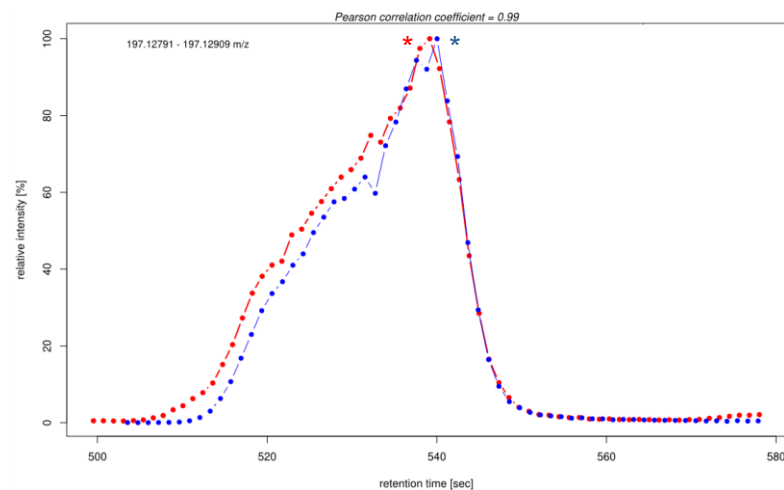
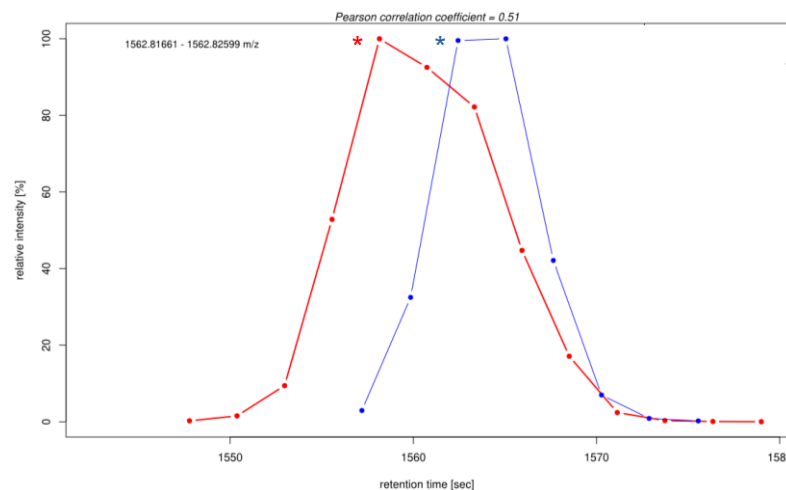
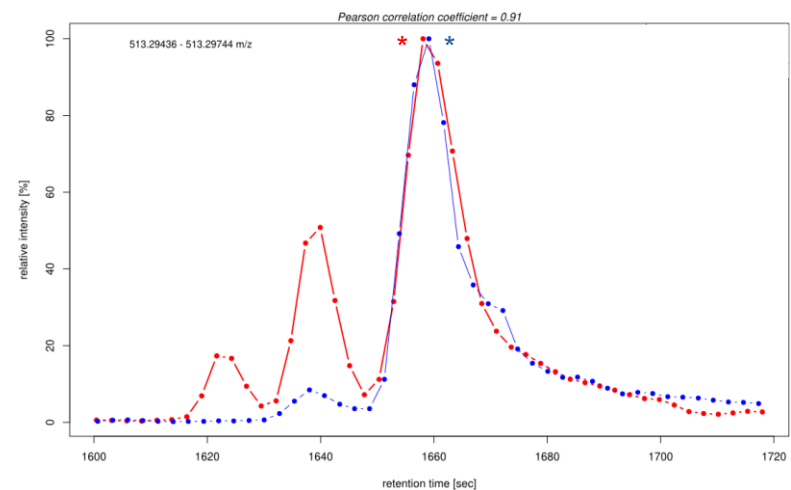
A.**B.****C.****D.****E.****F.**

Figure S1 Overlay of the extracted ion chromatograms of reference standards (blue) and compounds detected in AZ78 extracts (red); (A) cyclo(Pro-Leu), (B) cyclo(L-Pro-L-Tyr), (C) cyclo(Phe-Pro), (D) cyclo(Pro-Val), (E) WAP-8294A2 and (F) dihydromaltophilin; * peaks selected for further MS/MS analysis.

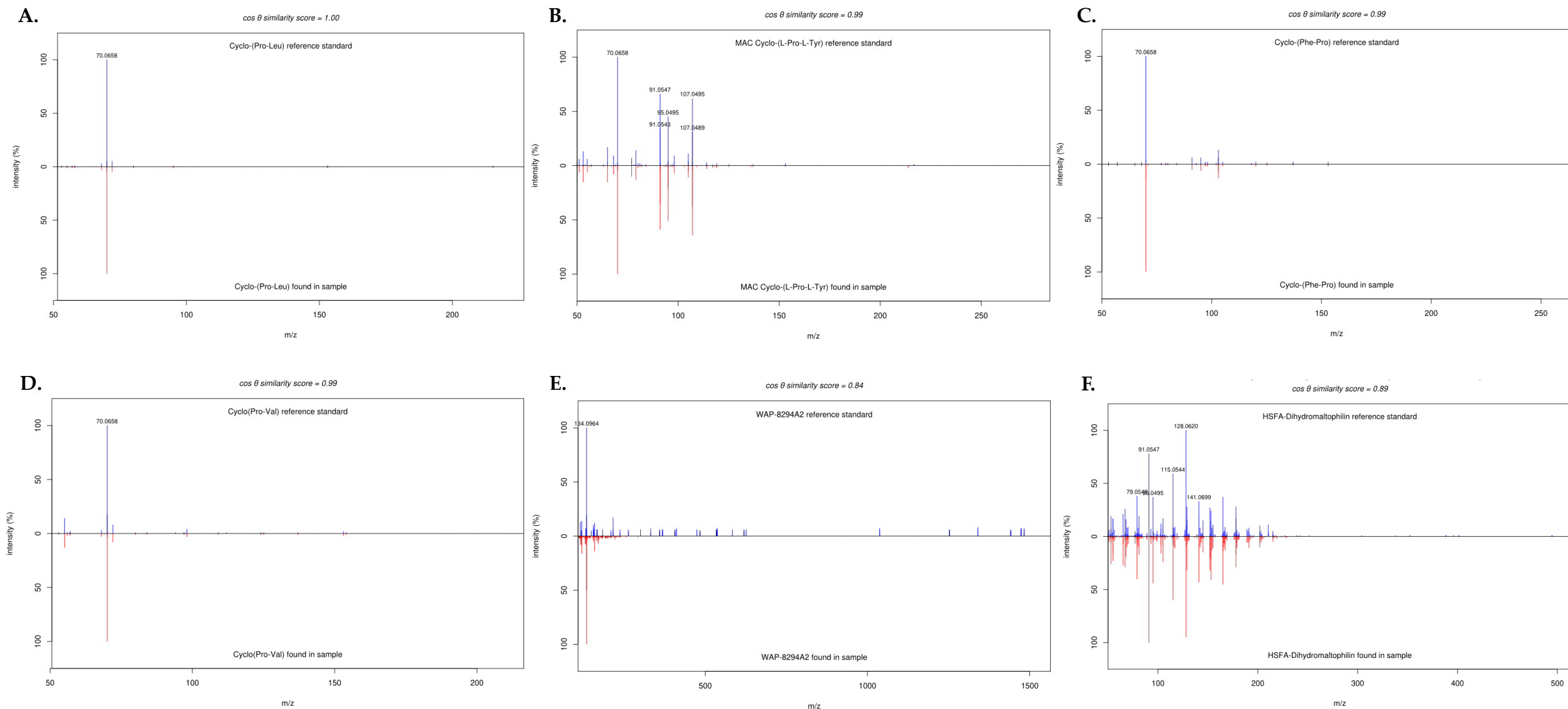


Figure S2 Side by side comparison of LC-HRMS/MS spectra of reference standards (blue) and compounds detected in AZ78 extracts (red); (A) cyclo(Pro-Leu) at 12.0 min, (B) cyclo(L-Pro-L-Tyr), (C) cyclo(Phe-Pro), (D) cyclo(Pro-Val), (E) WAP-8294A2 and (F) dihydromaltophilin.

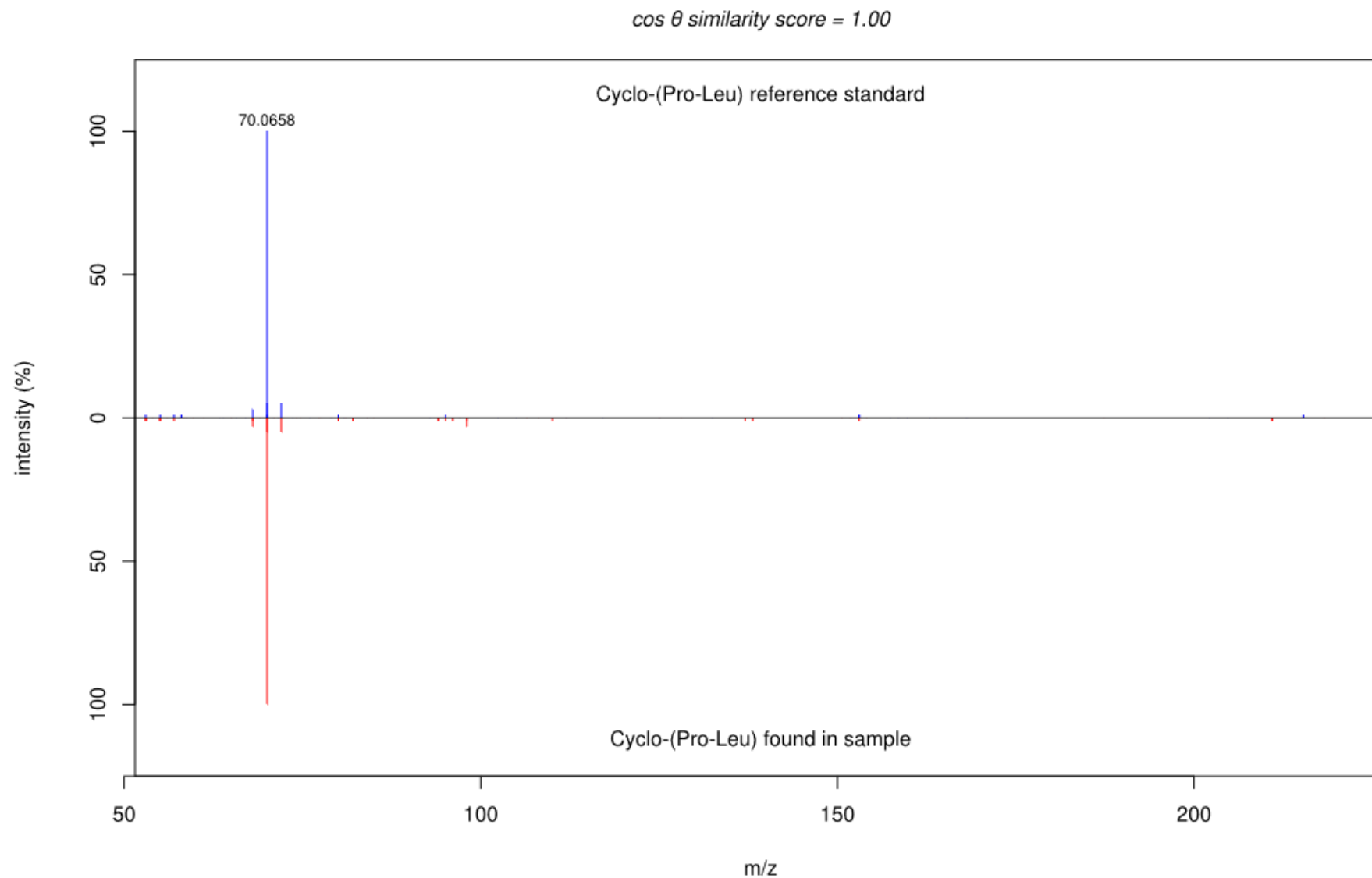


Figure S3 Side by side comparison of LC-HRMS/MS spectra of cyclo(Pro-Leu) peak at 12.5 min (red) and reference standard (blue).