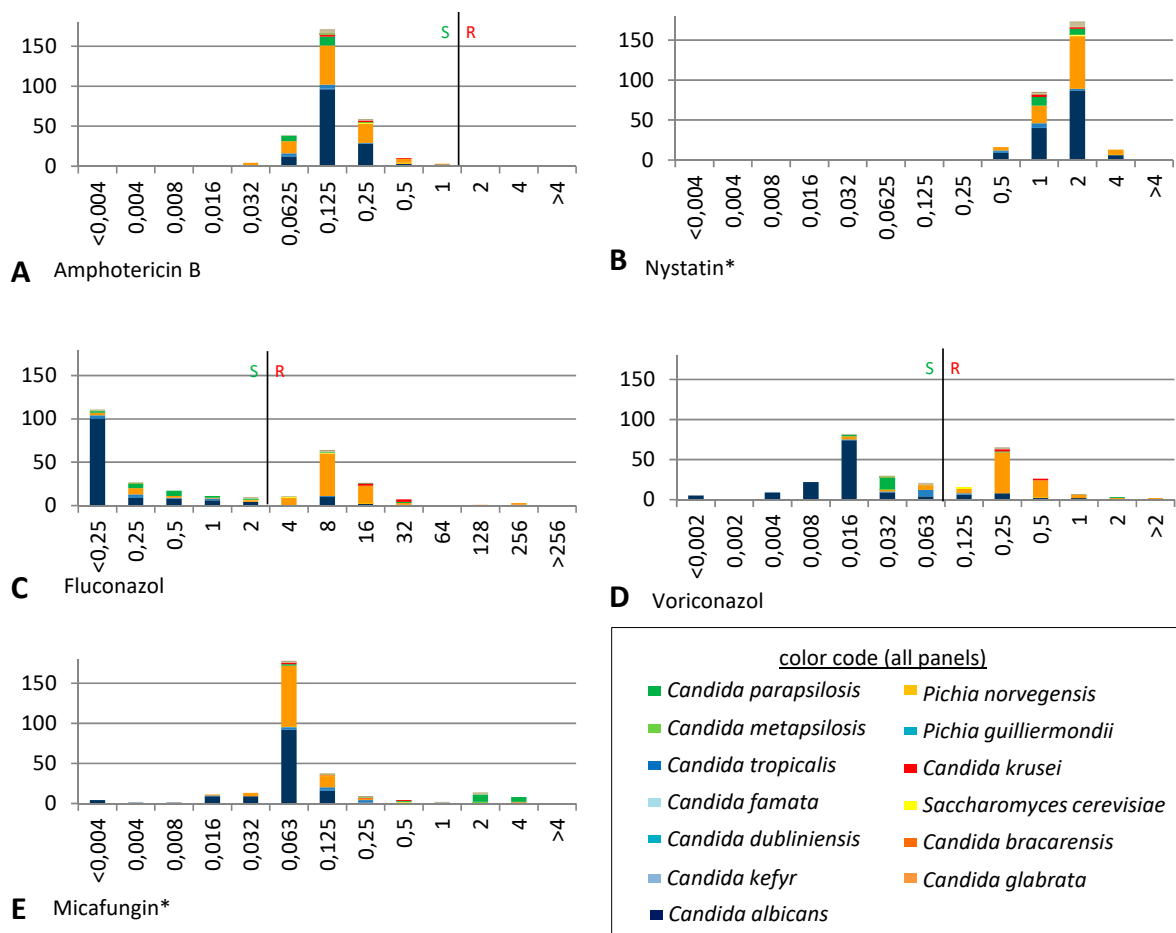


Supplementary data for:

Host age and denture wearing jointly contribute to oral colonization with innately azole-resistant yeasts in the elderly

Klaus-Peter Wojak^{1,2*}, Gertrud F. Ungermann^{1,2*}, Ichsan¹, Emilia Gomez-Molero¹, Klaus Jung³, Michael Weig¹, Friedemann Nauck², Dirk Ziebolz^{4&}, Yvonne Gräser⁵, Uwe Groß¹, Bernd Alt-Epping^{2§}, and Oliver Bader^{1§§}



Supplementary Figure S1: Yeast antifungal drug susceptibility. (A-E) Antifungal drug susceptibilities according to EUCAST broth micro dilution, stratified by yeast species. x-axis: MIC₈₀ (Amphotericin B) or MIC₅₀ values (all others); y-axis: number of isolates. Color code for species corresponds to the one used in Figure 2. ^a no clinical breakpoints available for either Micafungin nor Nystatin.

Supplementary Table S1: Patient characteristics and correlations with yeast colonization of the inguinal fold.

parameter	level	presence of <i>C. albicans</i> ^a				presence of non- <i>C. albicans</i> species ^a			
		no	yes	OR	p	no	yes	OR	p
age	years	65,96 +/-22,74	61,75 +/-19,03		0,4718	65,78 +/-22,71	65,71 +/-21,00		0,9892
gender	female	153(98%)	3(2%)	4,19	0,0338	150(96%)	6(4%)	2,56	0,0778
	male	109(92%)	9(8%)			107(91%)	11(9%)		
health status	control	44(96%)	2(4%)		0,0590	43(93%)	3(7%)		0,2446
	healthy	80(100%)	0(0%)			78(98%)	2(2%)		
	diseased	138(93%)	10(7%)			136(92%)	12(8%)		
anti-bacterials	no	216(97%)	7(3%)	3,33	0,0515	211(95%)	12(5%)	1,91	0,3292
	yes	46(90%)	5(10%)			46(90%)	5(10%)		
anti-mycotics	no	250(96%)	10(4%)	4,13	0,1193	244(94%)	16(6%)	1,17	0,6013
	yes	12(86%)	2(14%)			13(93%)	1(7%)		

OR: odds ratio.

^a None of the parameters survived stepwise variable selection from the multivariate logistic model.

Supplementary Table S2: Patient characteristics and correlations with yeast colonization of the interdigital space.

parameter	level	presence of <i>C. albicans</i>				presence of non- <i>C. albicans</i> species ^a			
		no	yes	OR	p, (p _{mult})	no	yes	OR	p
age	years	65,89+/- 22,65	62,6+/- 21,44		0,6446	66,49+/- 22,49	58,68+/- 22,64		0,1109
gender	female	153(98%)	3(2%)	3,20	0,1058 (0.2160)	149(96%)	7(4%)	3,81	0,0027
	male	111(94%)	7(6%)			100(85%)	18(15%)		
health status	control	44(96%)	2(4%)		0,3936 (0.9120)	39(85%)	7(15%)		0,0809
	healthy	79(99%)	1(1%)			77(96%)	3(4%)		
	diseased	141(95%)	7(5%)			133(90%)	15(10%)		
anti-bacterials	no	217(97%)	6(3%)	3,06	0,0938	203(91%)	20(9%)	1,10	0,7916
	yes	47(92%)	4(8%)			46(90%)	5(10%)		
anti-mycotics	no	250(96%)	10(4%)	0,00	1,0000 (1.0000)	237(91%)	23(9%)	1,71	0,3716
	yes	14(100%)	0(0%)			12(86%)	2(14%)		
health status x gender					(0.1010)				
health status x anti-mycotics					(1.0000)				

OR: odds ratio. Boldface: statistically significant correlations.

^a None of the parameters survived stepwise variable selection from the multivariate logistic model.