

**Table S1.** Characteristics of ZnONPs and SeNPs.

<b>Sample</b>	<b>Particle size (nm)</b>	<b>PDI</b>	<b>Zeta potential (mV)</b>
ZnONPs	30.92 ± 1.25	0.54 ± 0.006	32.16 ± 0.252
SeNPs	78.47 ± 17.93	0.29 ± 0.23	-20.36 ± 1.79

DPI: polydispersity index

Figure S1. Representative particle size distribution (A) and zeta potential (B) curves of ZnNPs.

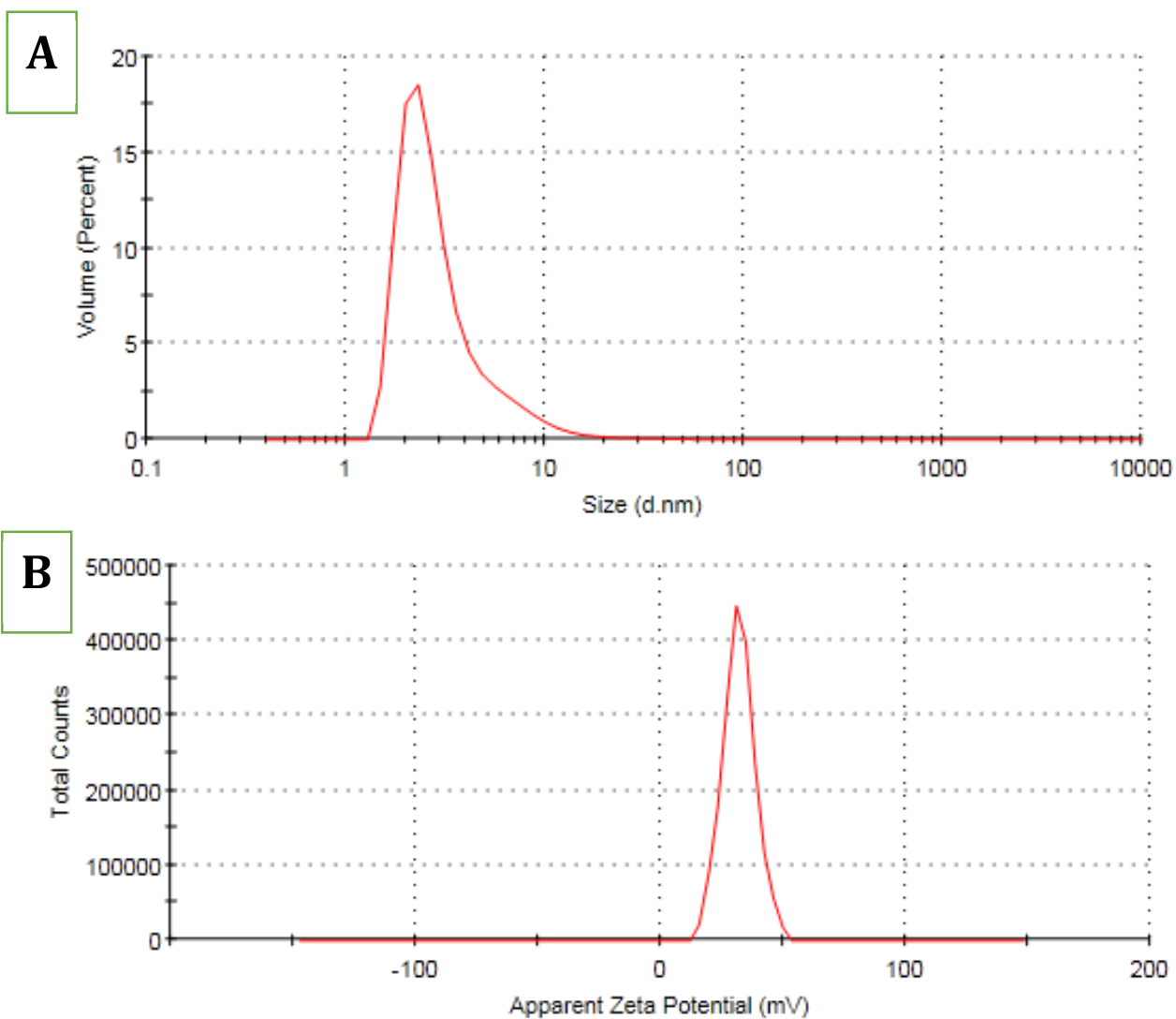


Figure S2. Representative particle size distribution (A) and zeta potential (B) curves of SeNPs.

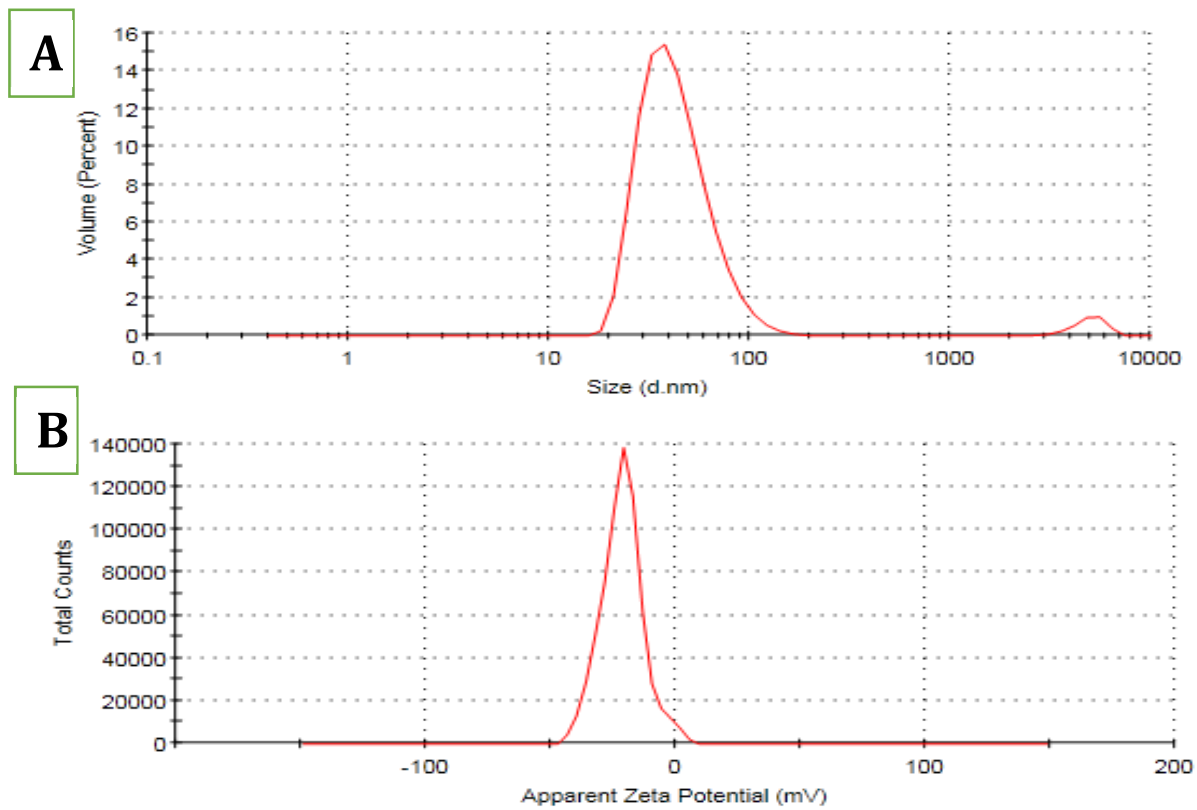
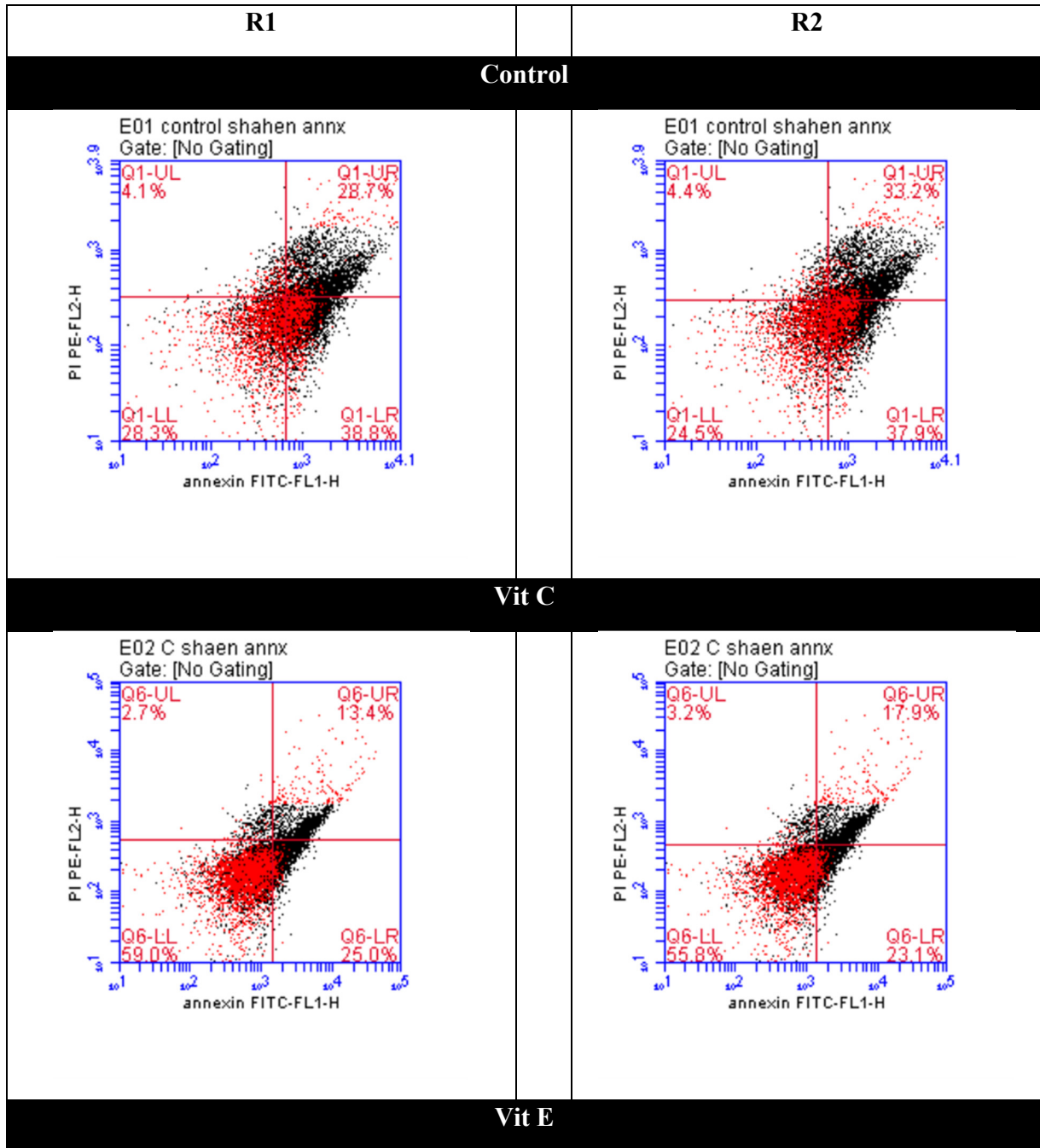
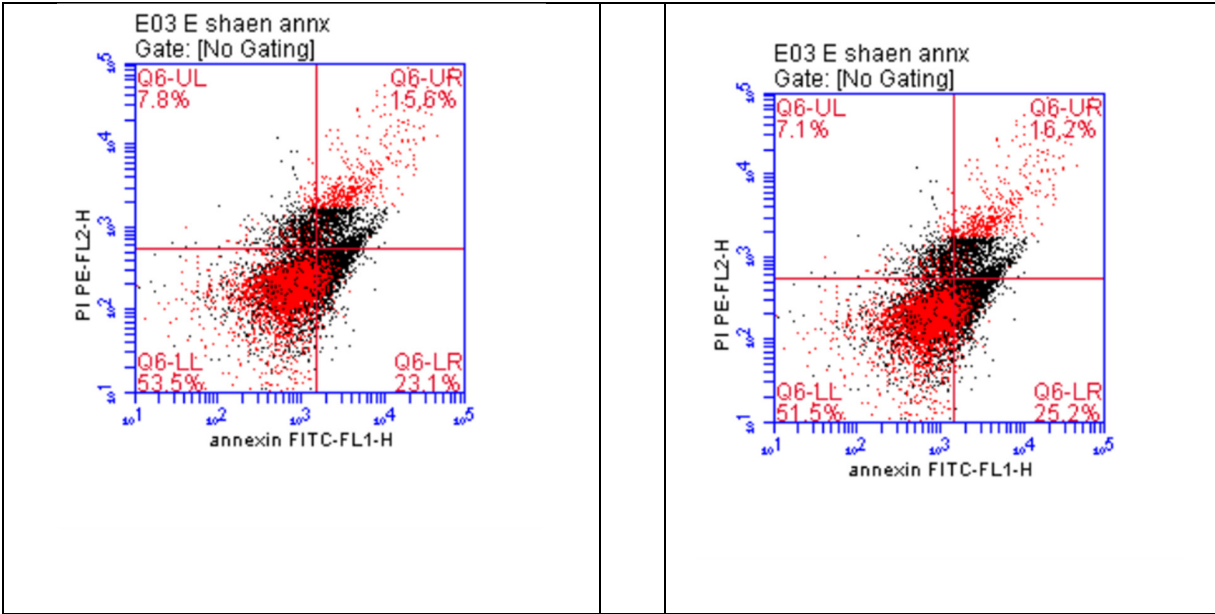
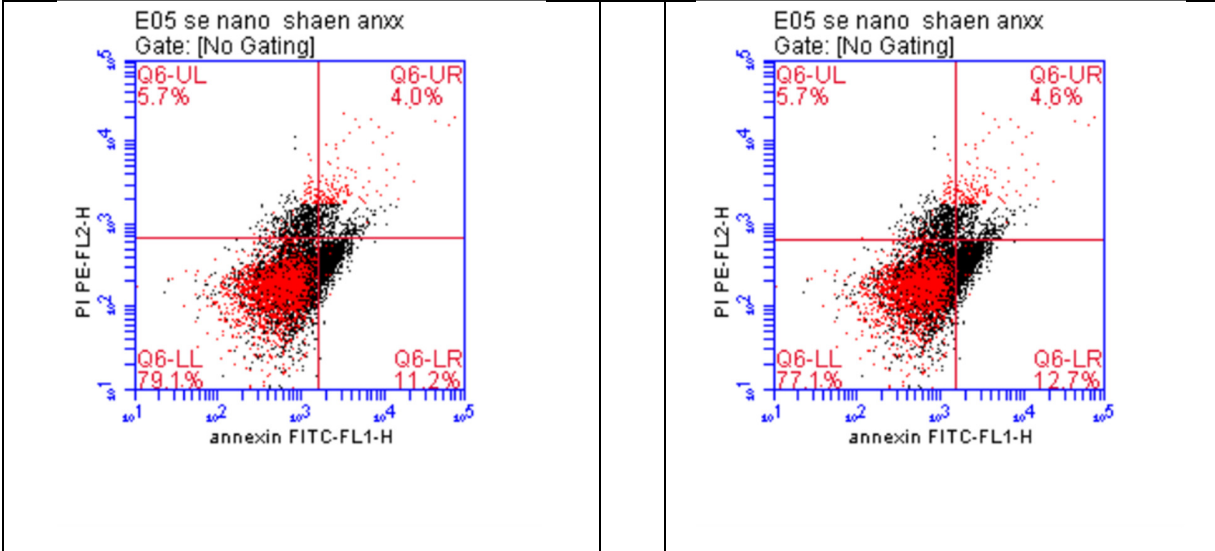


Figure S3. The raw data of two replicates for annexin V flow cytometry.

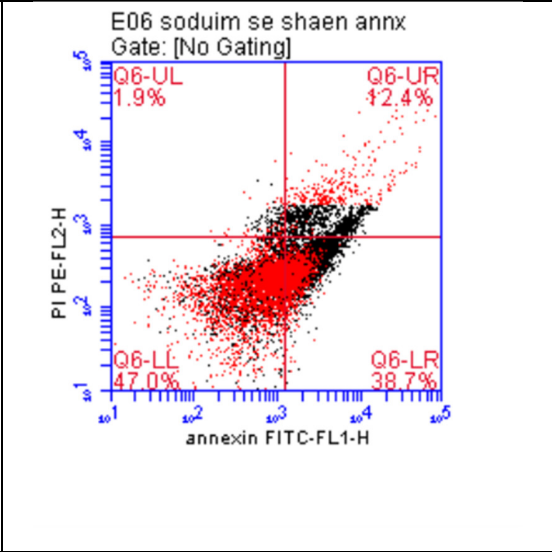
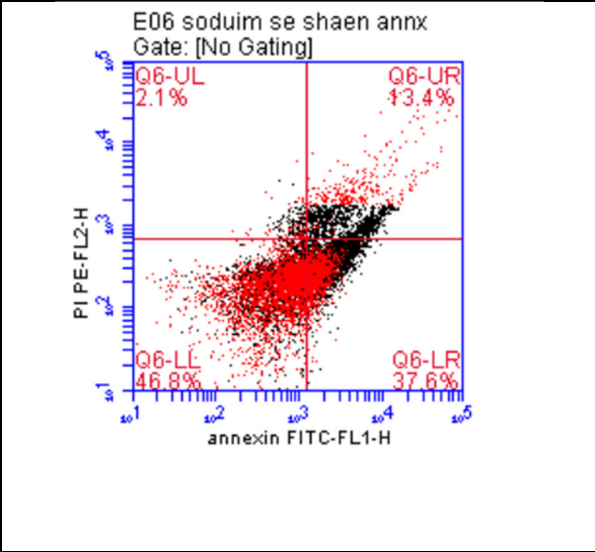




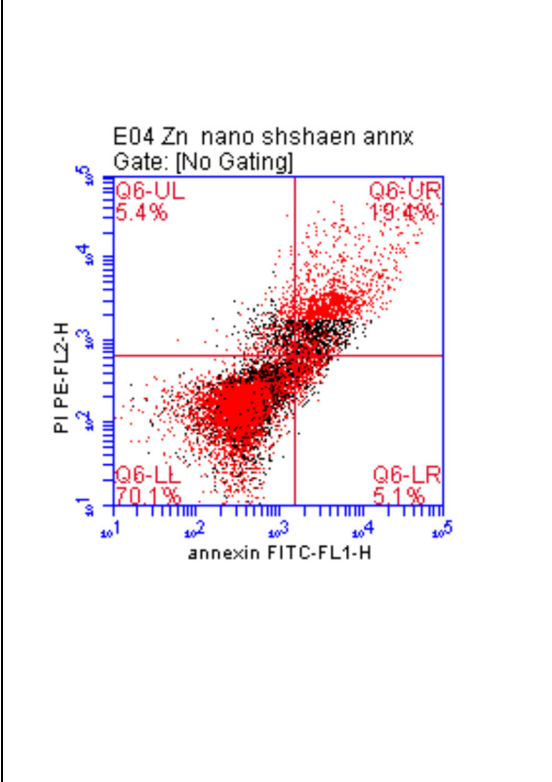
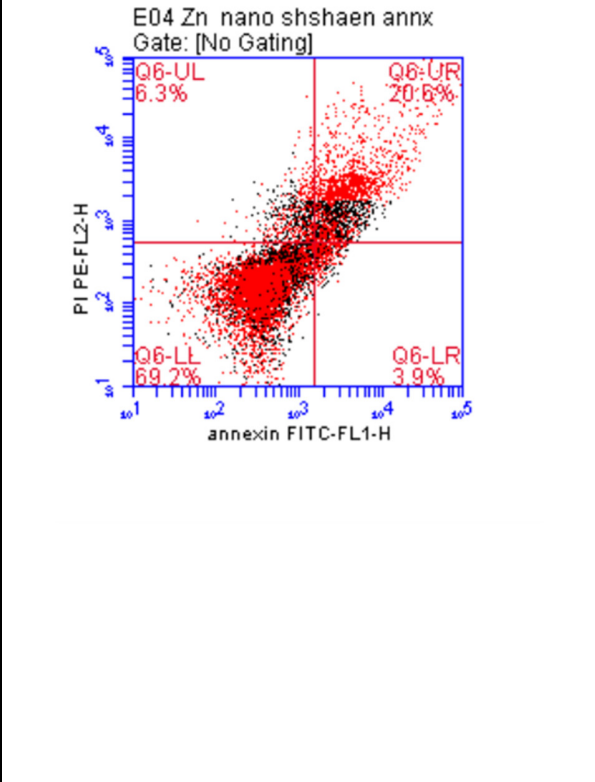
**Nano Se**



**Sodium selenite**



**Nano Zn**



**Zn sulphate**

