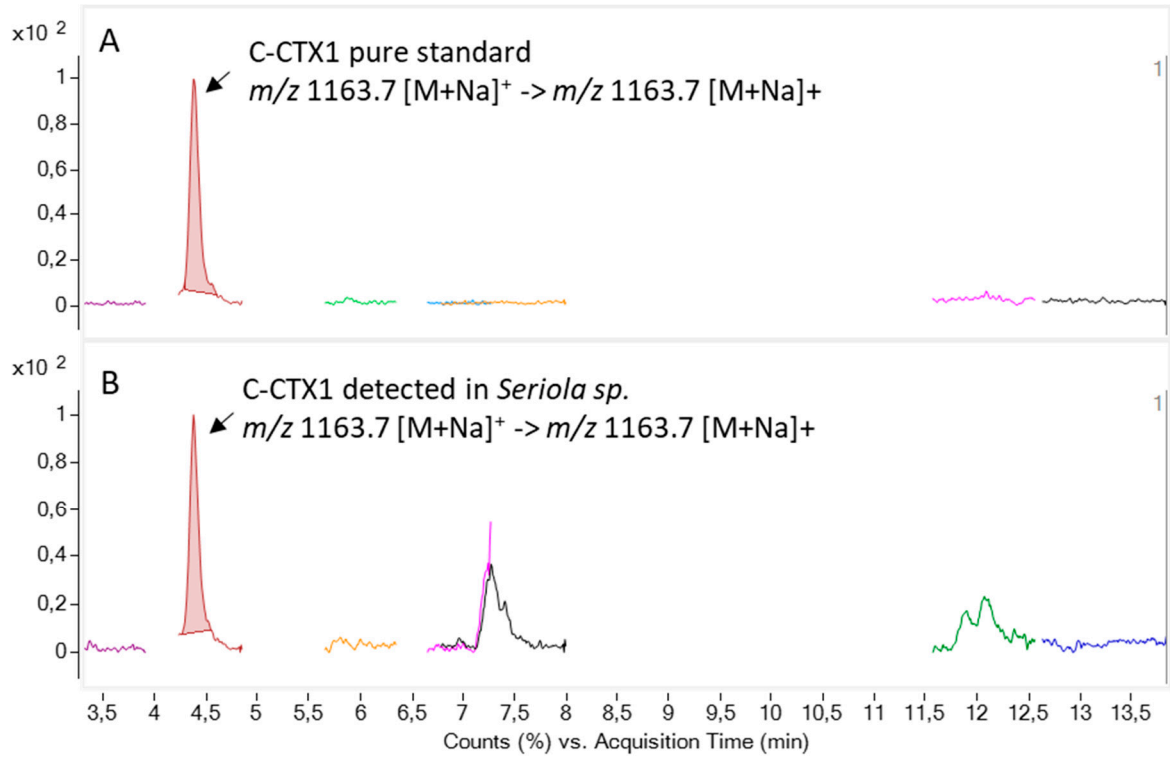


Supplementary data S1

Chromatogram obtained after the LC-MS/MS analysis [1] in MRM mode of **A)** C-CTX1 pure standard (5 ng / mL); **B)** C-CTX1 detected in the *Seriola* sp. Along with the C-CTX1 peak, some traces of C-CTX1-Me and interferences, which could be erroneously identified as other CTXs from the P-CTXs family, were found.



Supplementary data S2

Outlined research design.

Objectives	To describe the symptomatology in goldfish (<i>Carassius auratus</i>) associated to ciguatoxin (CTX) ingestion.
	To estimate the time required for CTXs to be accumulated in fish muscle.
Fish species	Goldfish which lives in a naturally CTX free environment.

