

Figure S1. PDA chromatogram of *A. absinthium* methanolic extract with marked collected fractions (2D view, 190–400 nm).

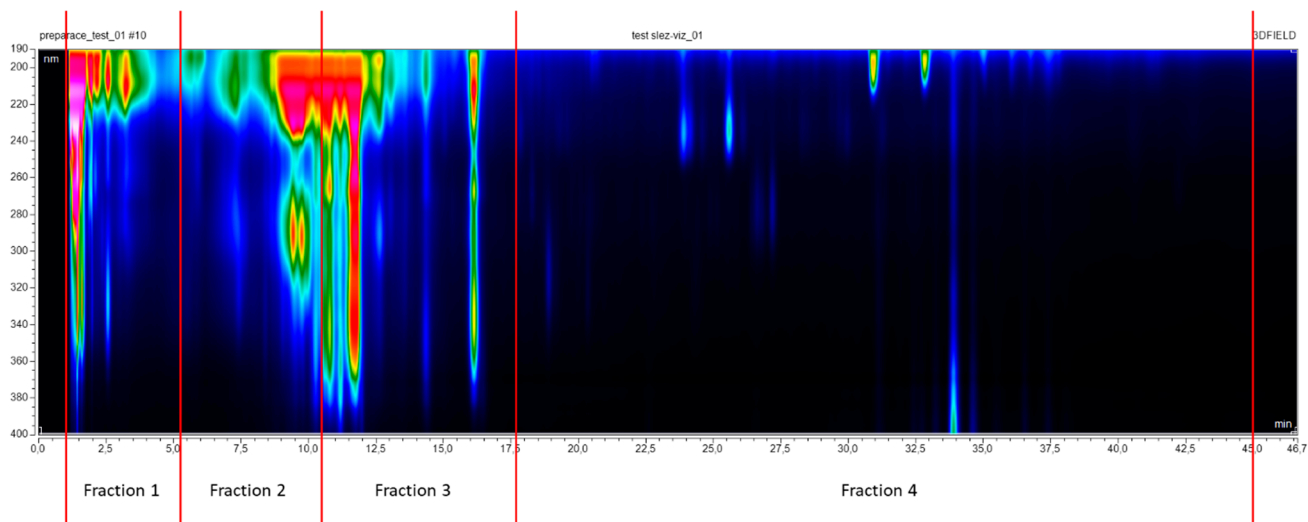


Figure S2. PDA chromatogram of *M. sylvestris* methanolic extract with marked collected fractions (2D view, 190–400 nm).

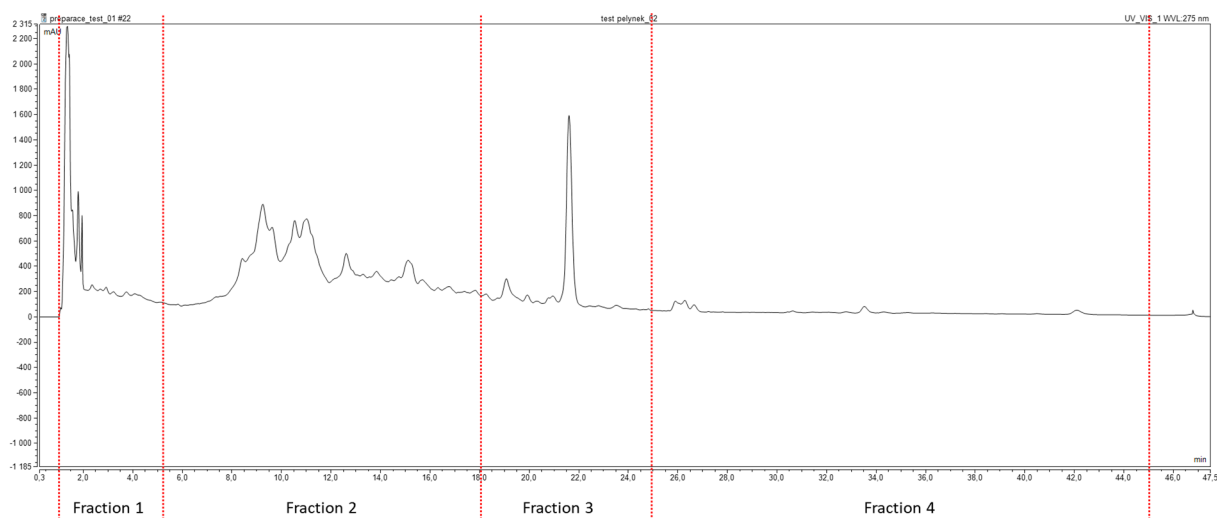


Figure S3. UV-Vis chromatogram of *A. absinthium* methanolic extract with marked collected fractions detected at 275 nm.

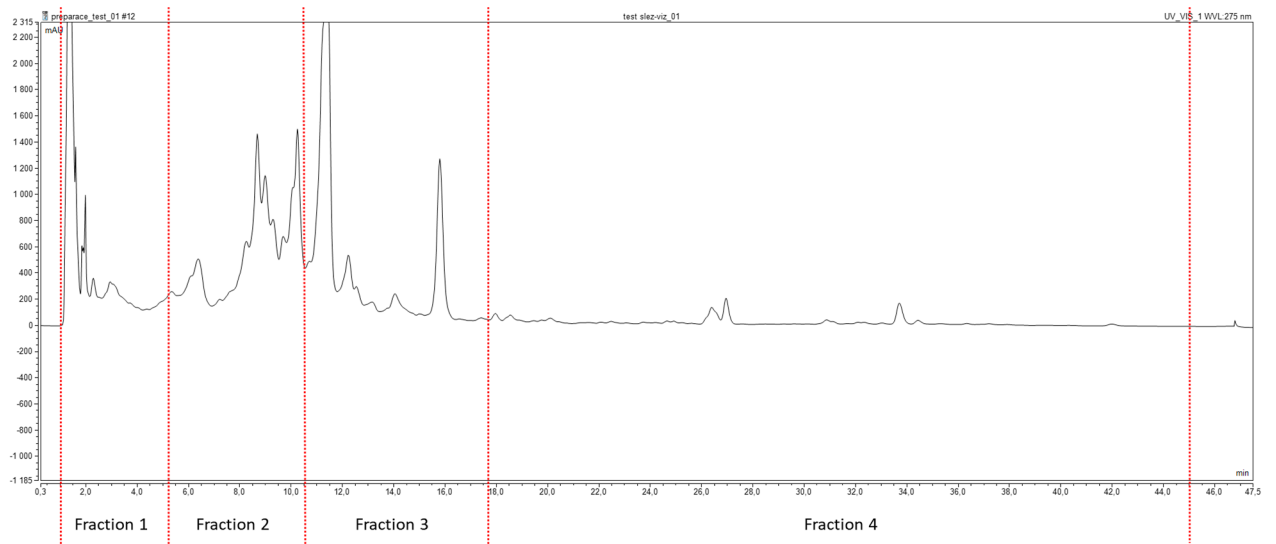


Figure S4. UV-Vis chromatogram of *M. sylvestris* methanolic extract with marked collected fractions detected at 275 nm.