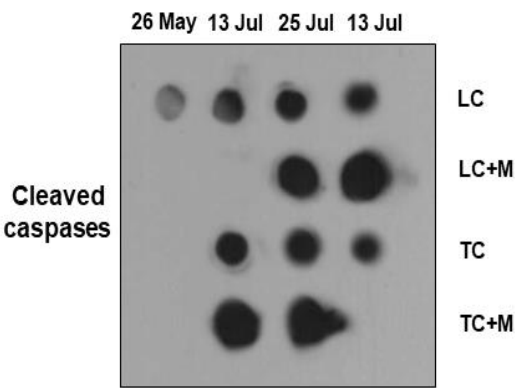
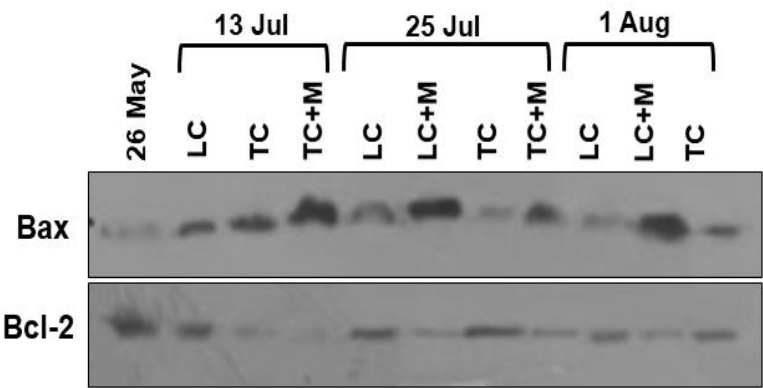


Are marine heatwaves responsible for mortalities of farmed *Mytilus galloprovincialis* mussels? A case study in Thermaikos gulf, Greece

**Athanasios Lattos^{1*}, Dimitrios K. Papadopoulos¹, Kostantinos Feidantsis¹,
Ioannis A. Giantsis², Dimitrios Karagiannis³ and Basile Michaelidis^{1*}**

Figure S2: The complete original immunoblots shown in Figure 9 are presented in order below. The individual parts comprising Figure 9 are specified using black boxes.

Cropped blots in main paper



Original blots

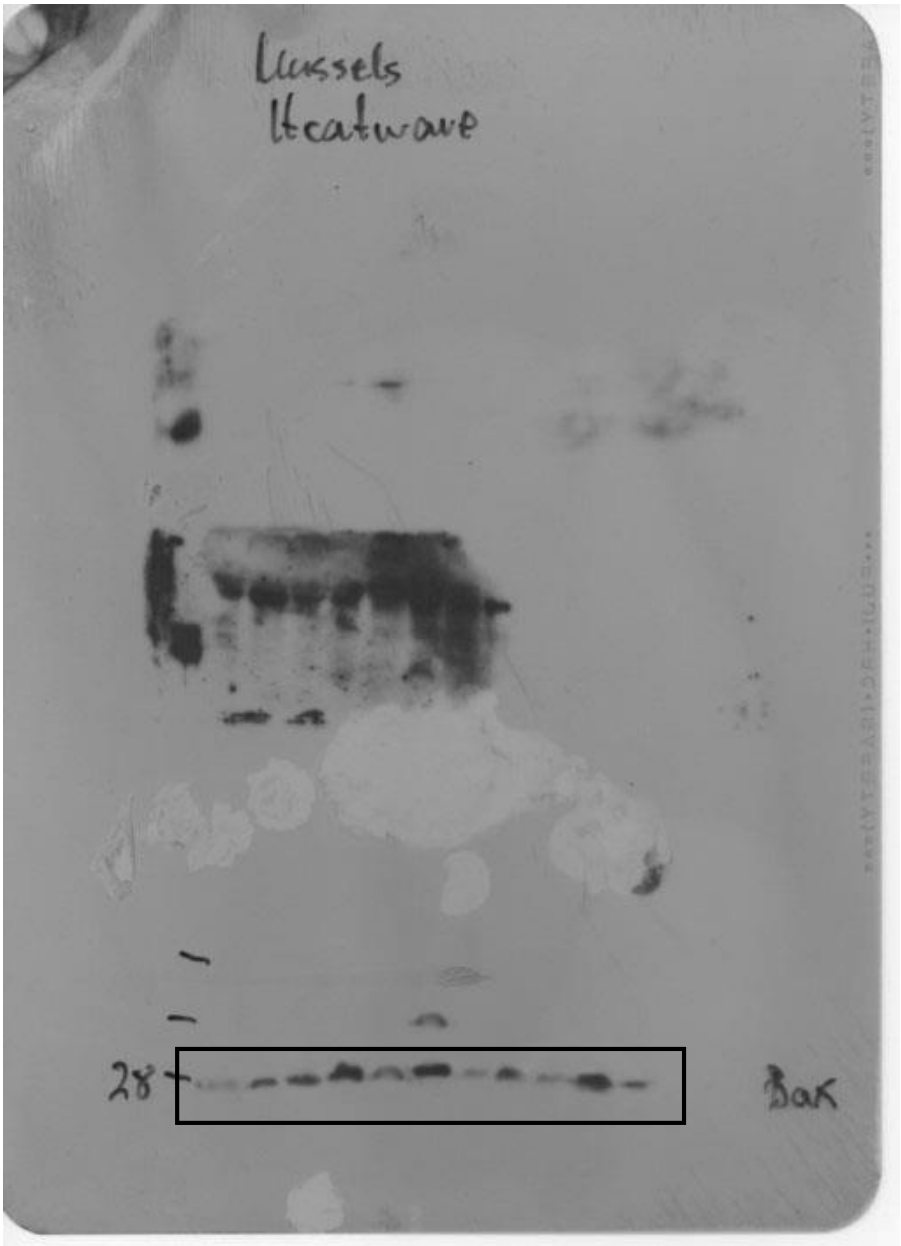
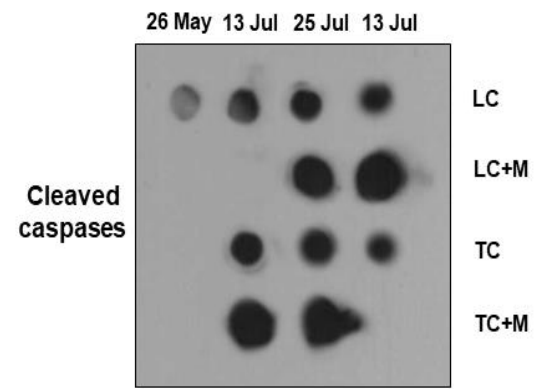
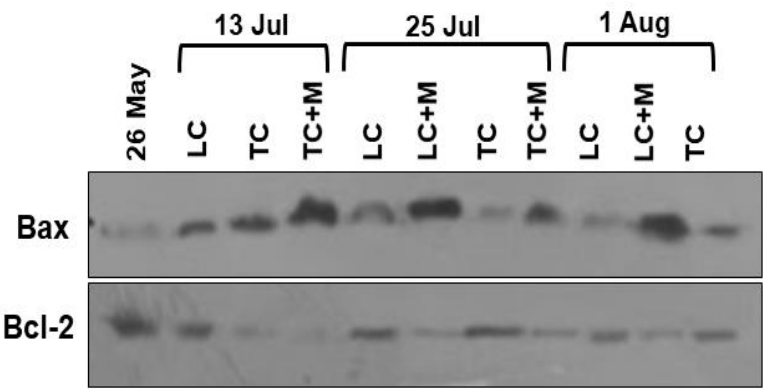


Figure S3: The complete original immunoblots shown in Figure 9 are presented in order below. The individual parts comprising Figure 9 are specified using black boxes.

Cropped blots in main paper



Original blots

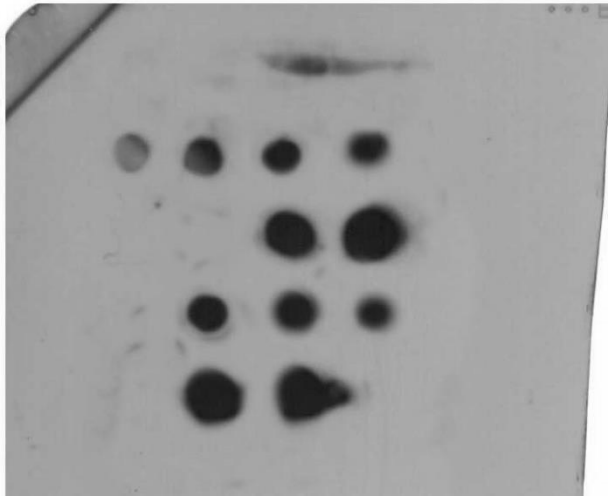
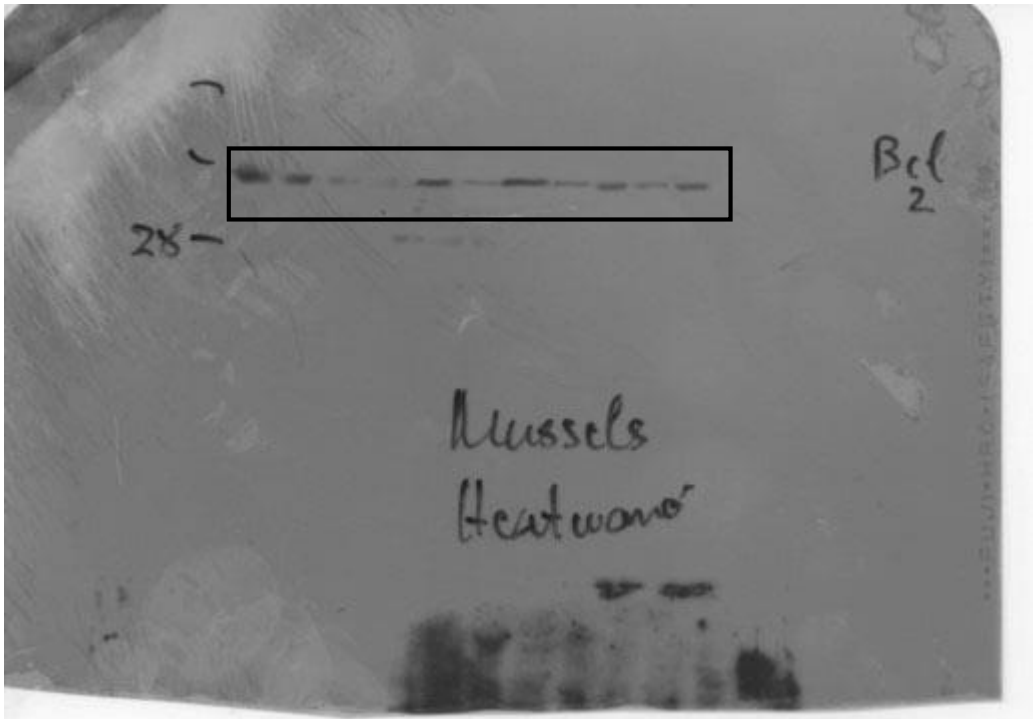
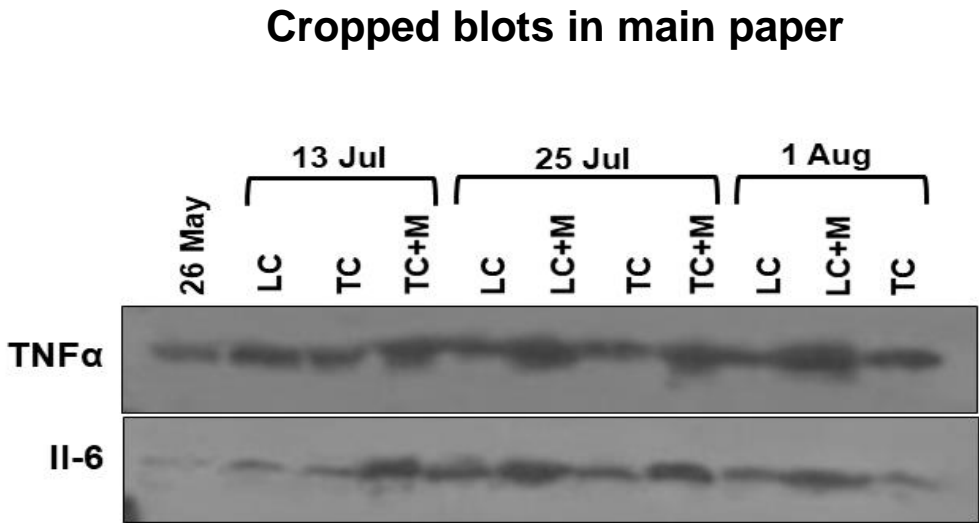


Figure S4: The complete original immunoblots shown in Figure 11 are presented in order below. The individual parts comprising Figure 11 are specified using black boxes.



Original blots

