

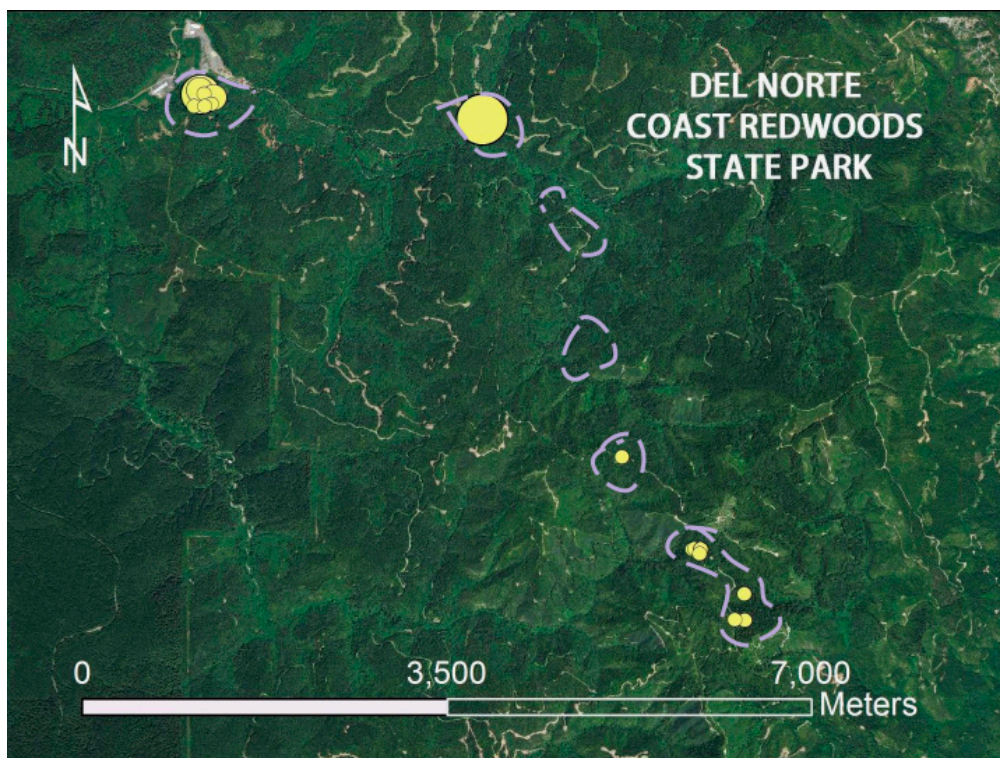


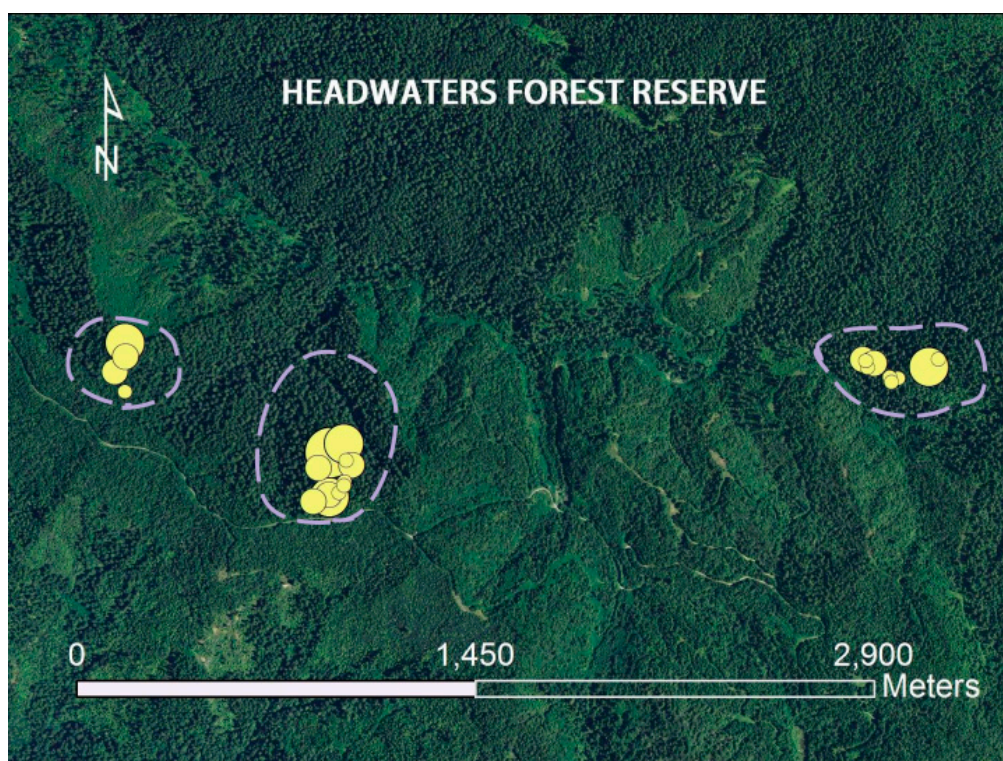
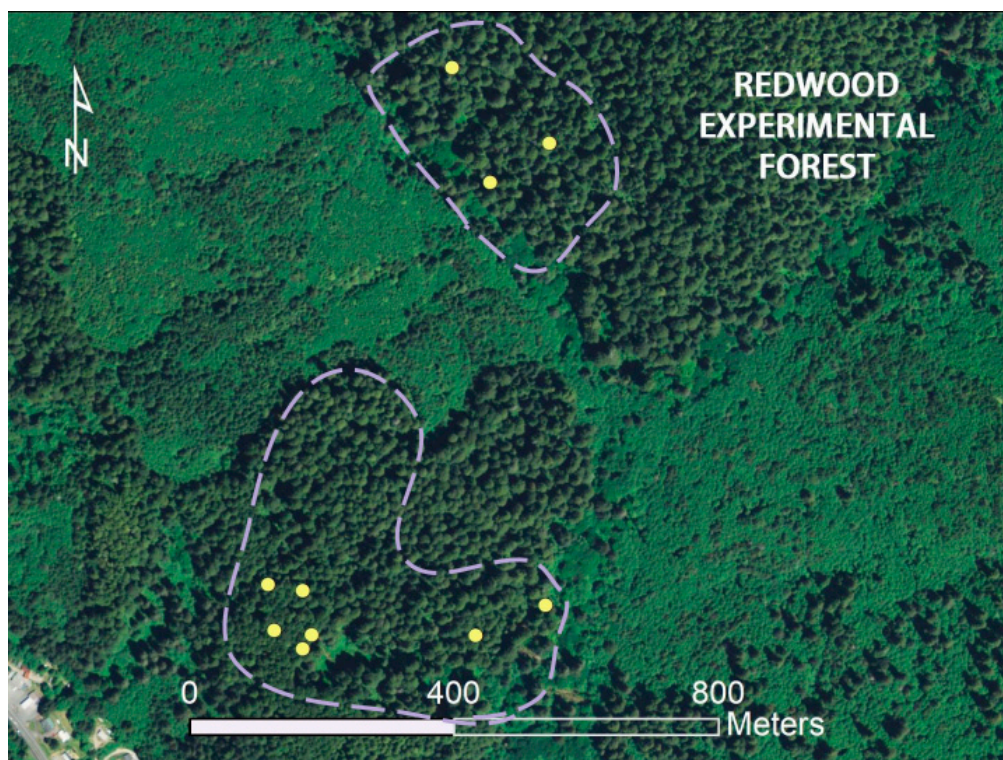
Article

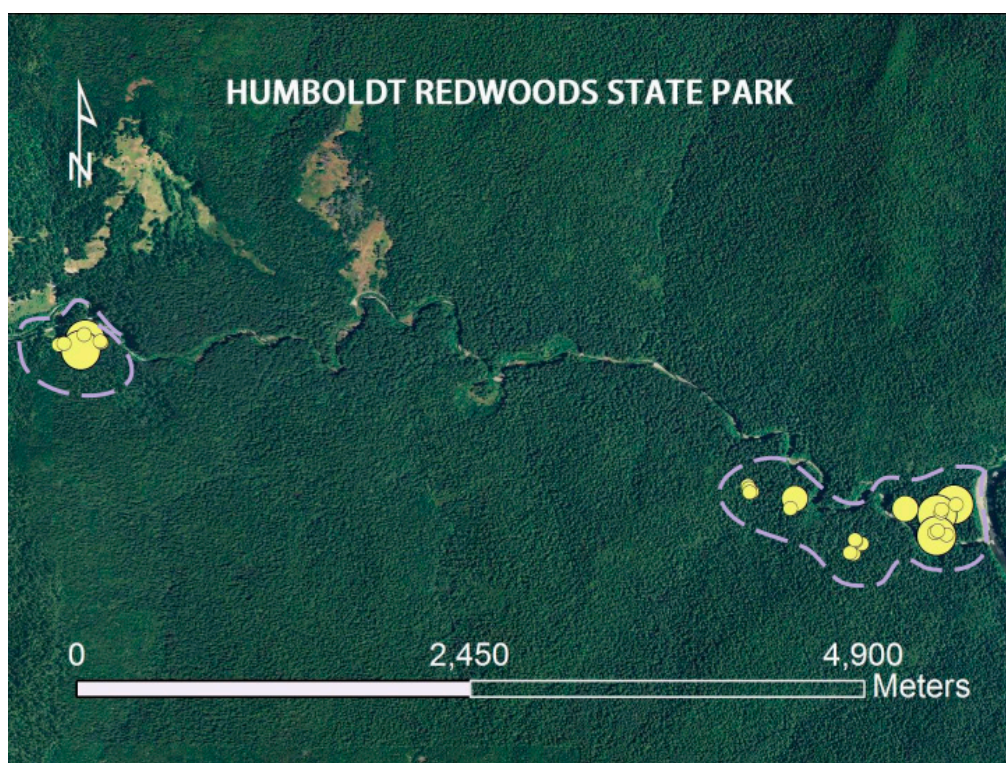
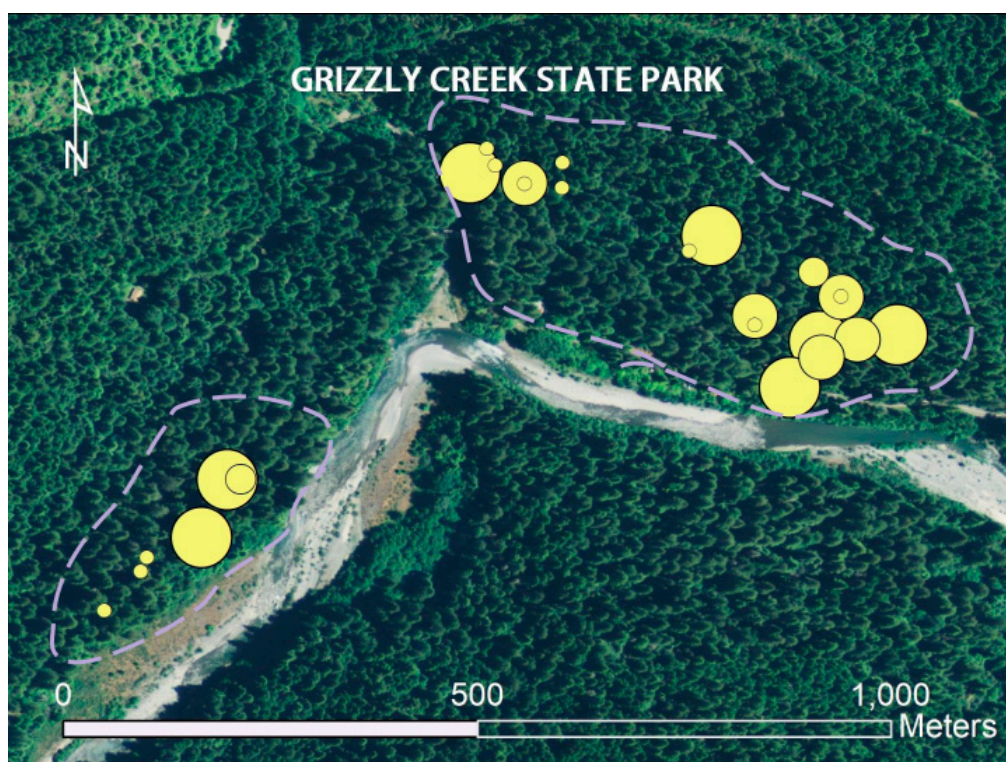
Bat Use of Hollows in California's Old-Growth Redwood Forests: From DNA to Ecology

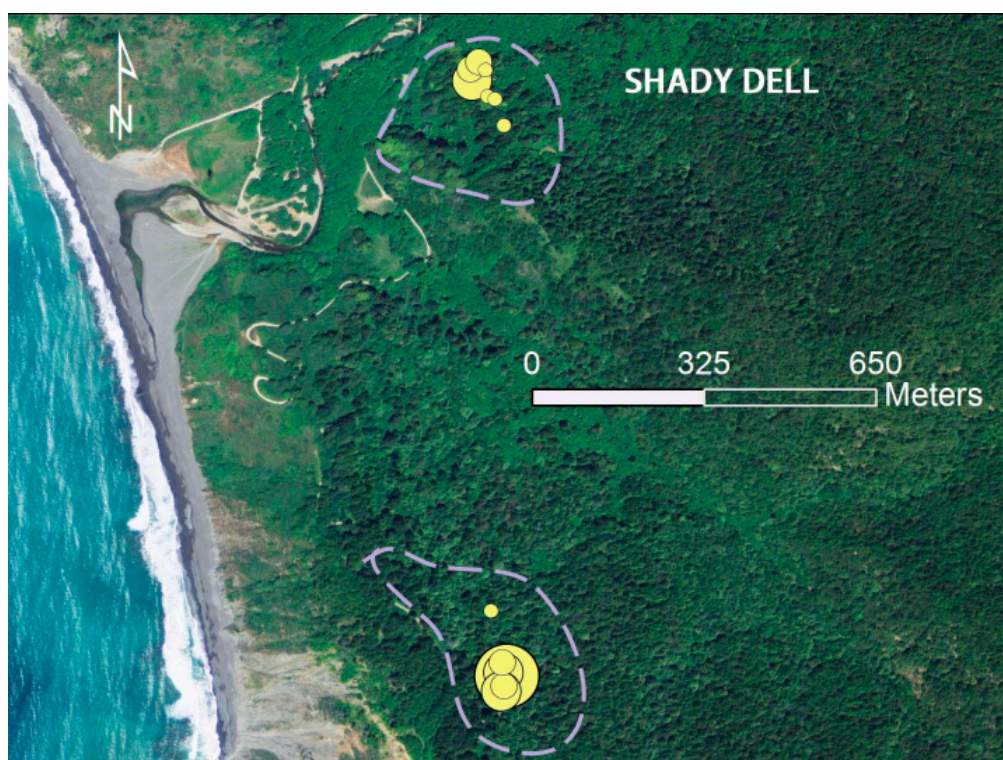
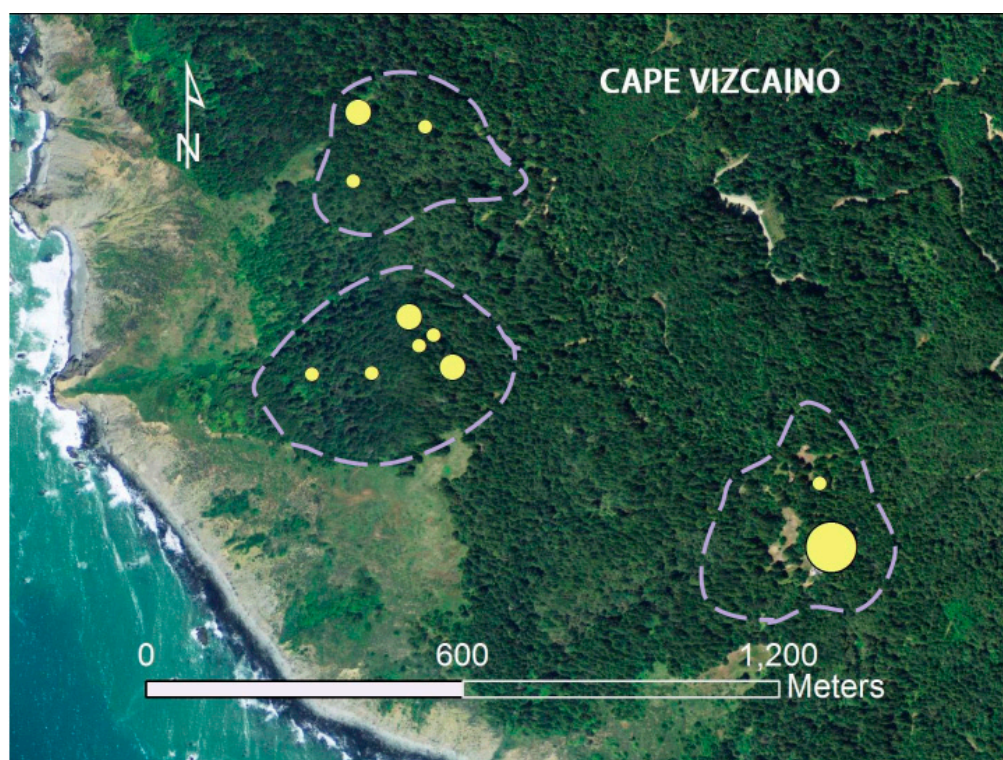
Amon J. Armstrong, Faith M. Walker, Colin J. Sobek, Cheri J. Sanville, Stephanie L. Martin and Joseph M. Szewczak

Figure S1. Study sites with search areas (purple) and hollow locations (yellow circles; sized by guano mass).









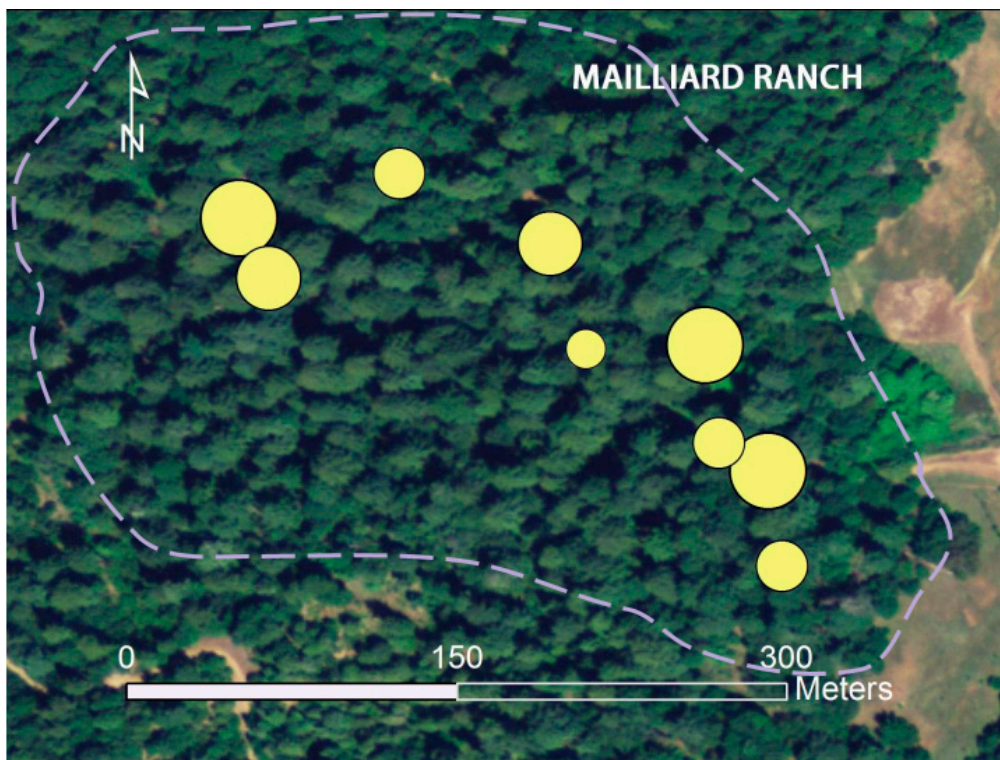


Figure S2. The Generalized Additive Mixed Model (GAMM; blue line) associating the top variable ceiling height with guano mass (adjusted $R^2 = 0.17$). Shaded areas are Bayesian posterior standard error fits (similar to 95% confidence intervals; “mgcv” package; Wood, S. N. 2020).

