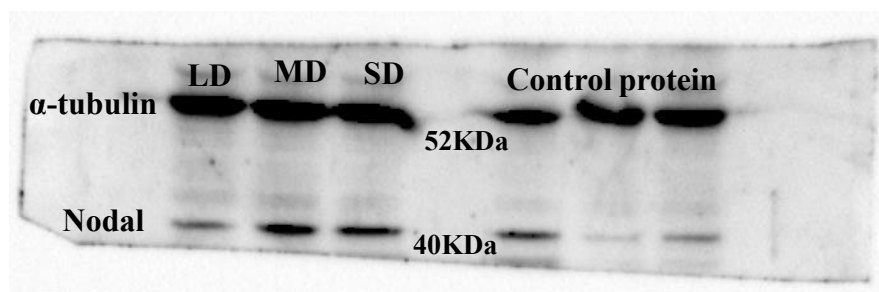
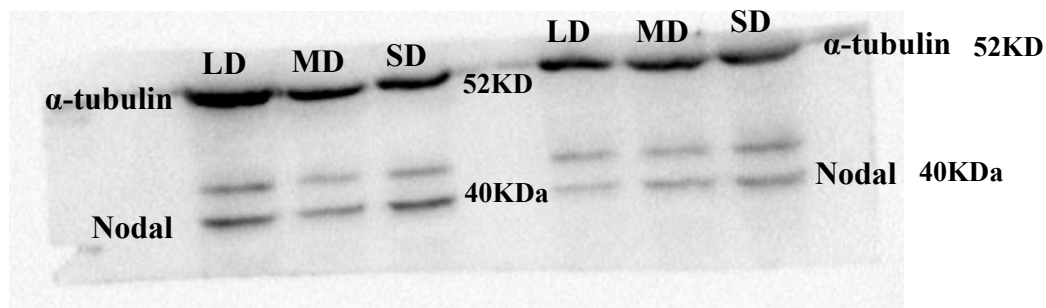
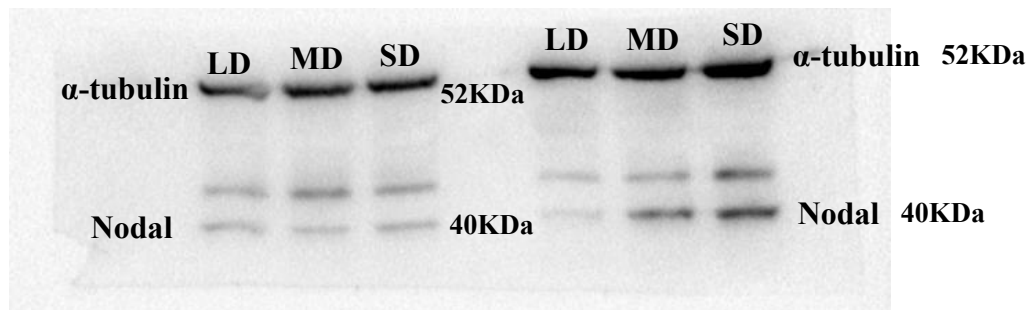
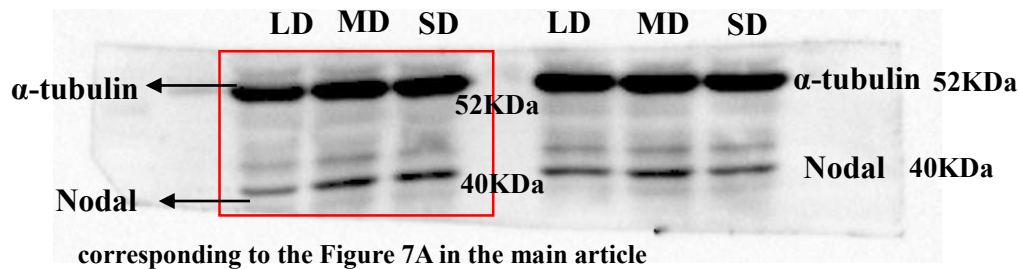
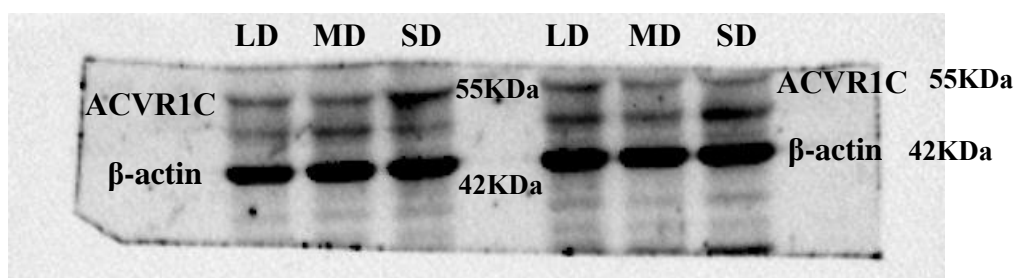
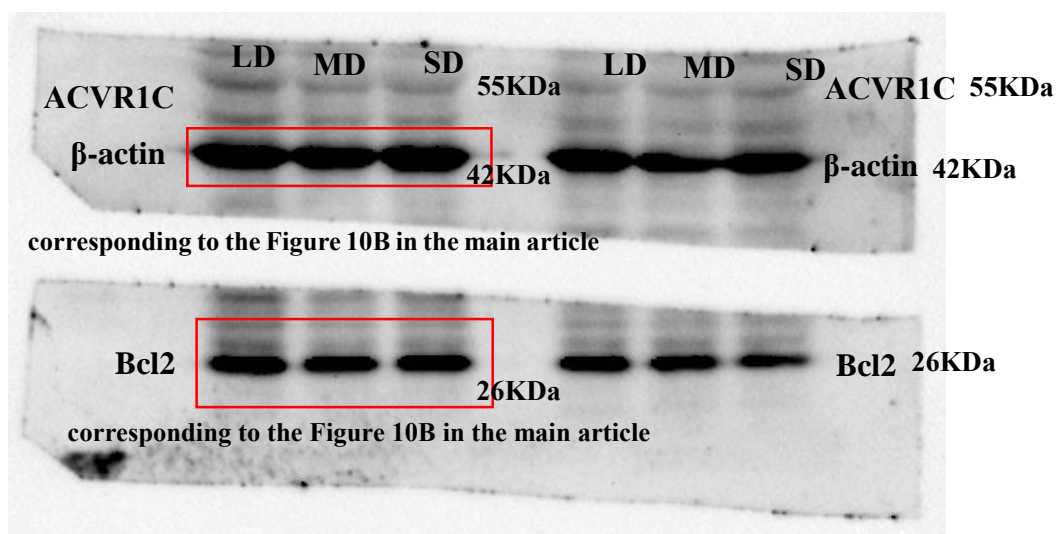
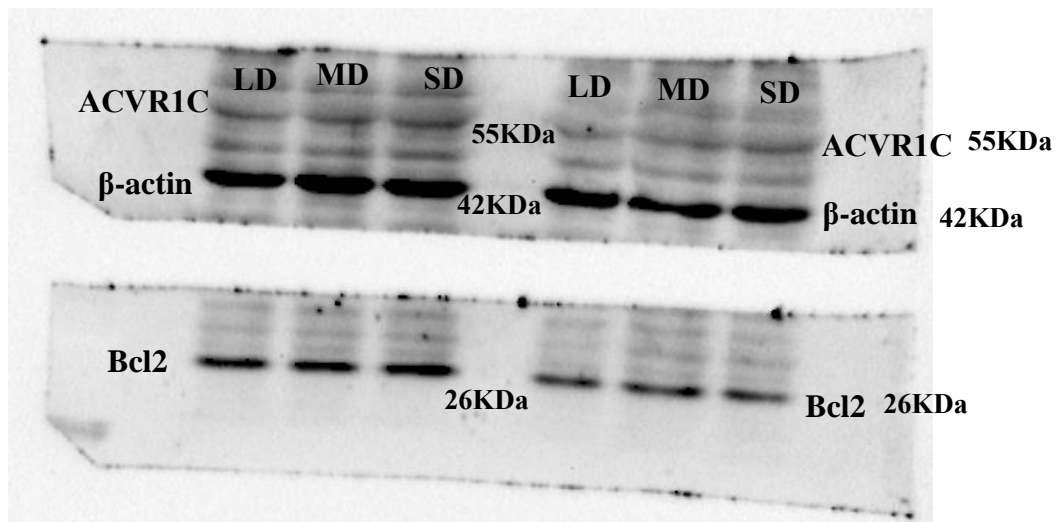
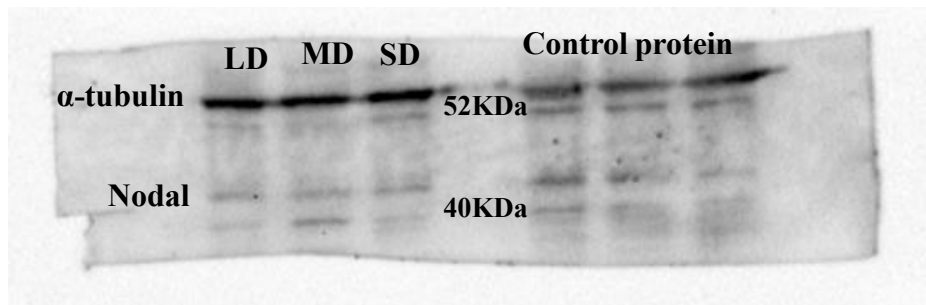
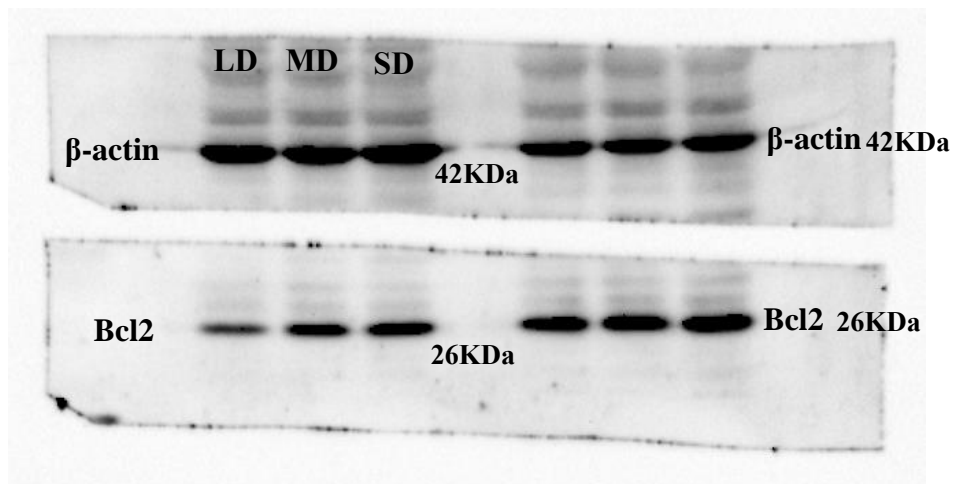
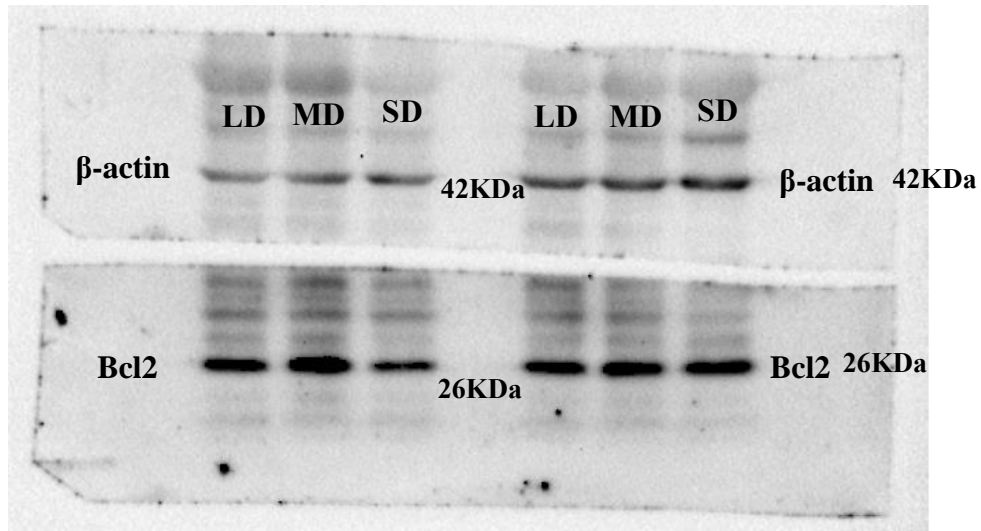
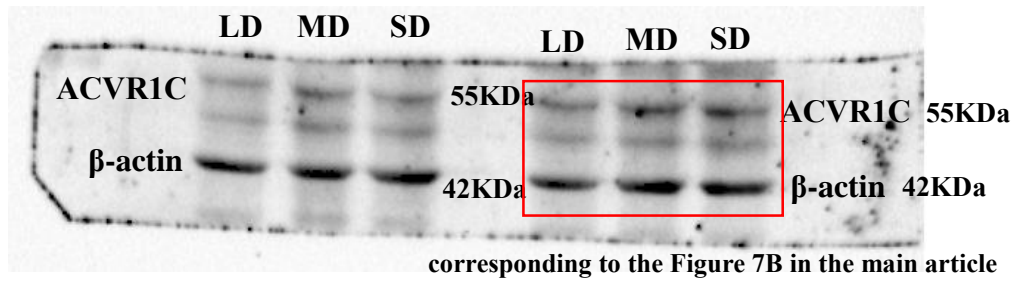


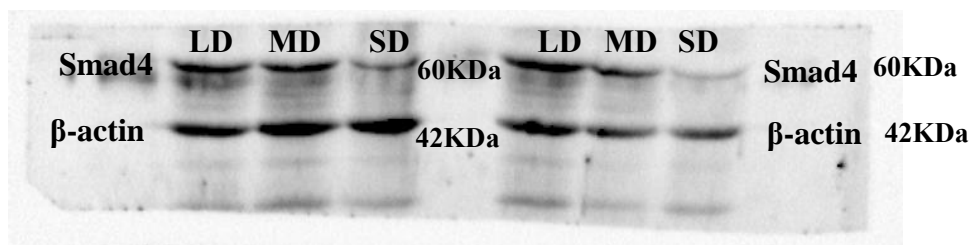
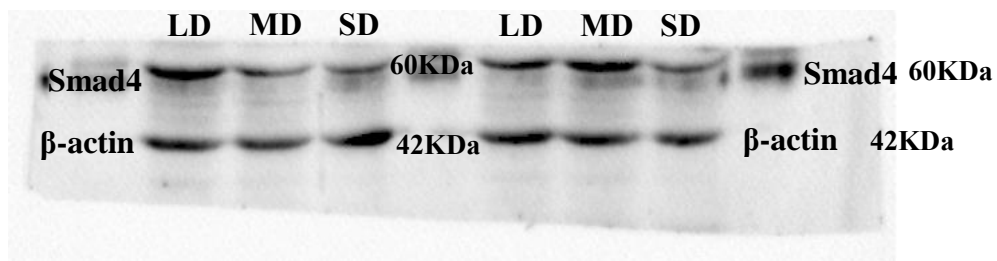
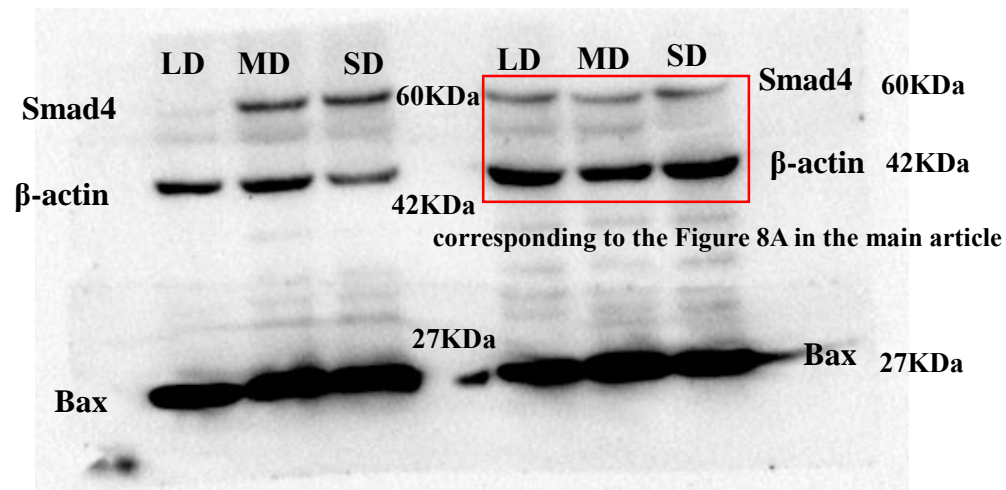
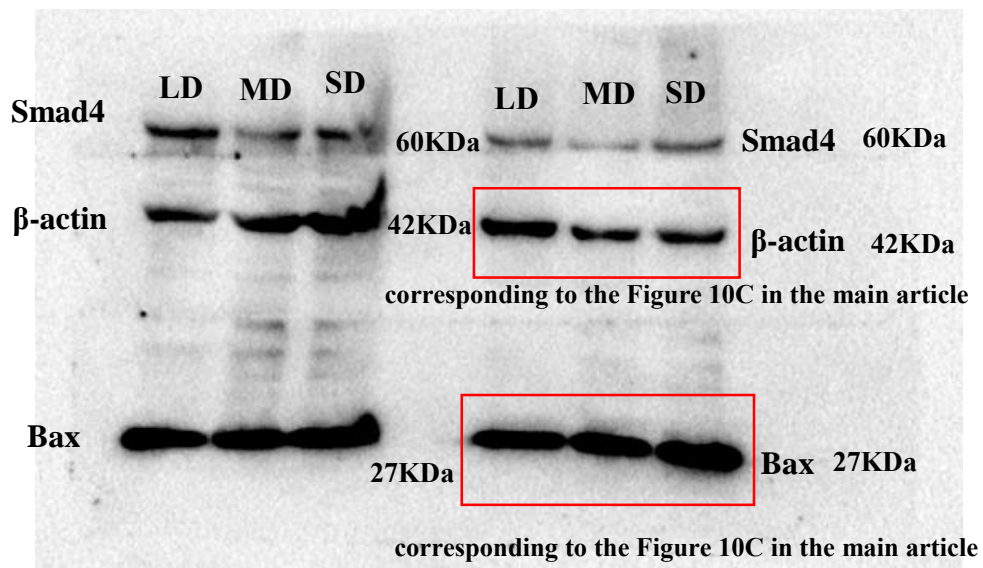
Original images of Western blotting.

This is the original images of Western blotting with 11 proteins among 8 different individual, n=8. Some polyvinylidene fluoride (PVDF) membranes were sliced during the experiment in accordance with the required molecular weight range to make it easier to incubated with different primary antibodies at once, and we made sure that the internal reference and the target protein were both on the same membrane.

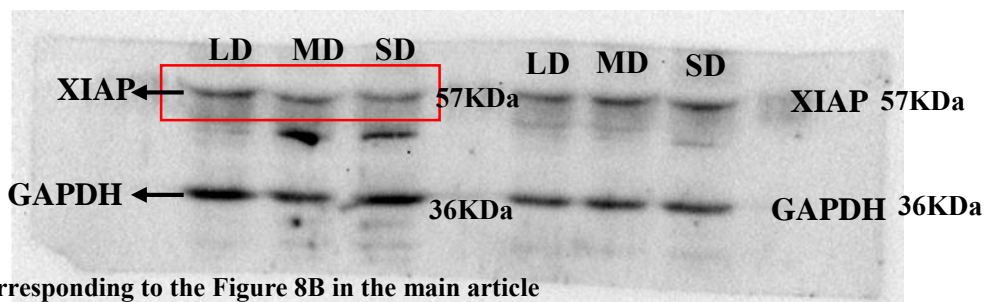
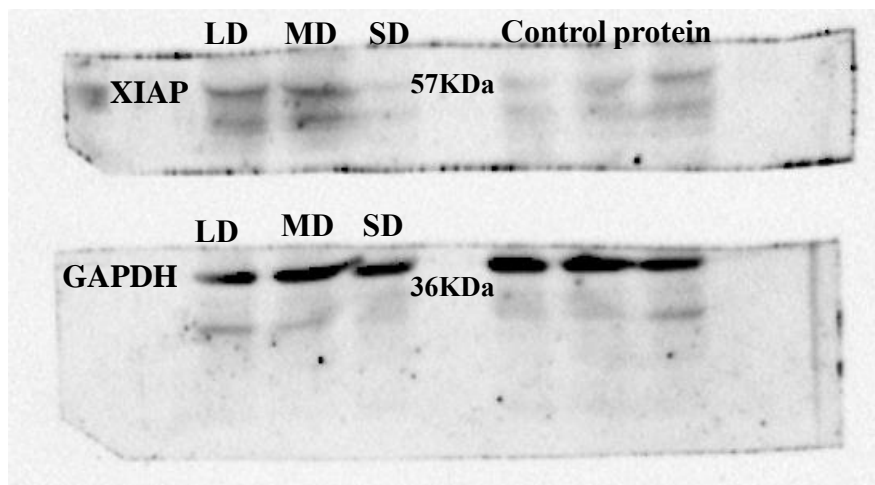
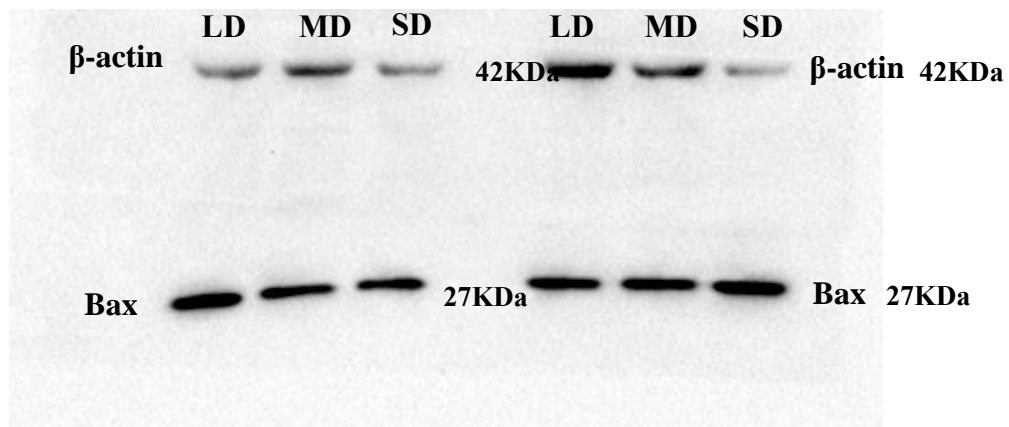
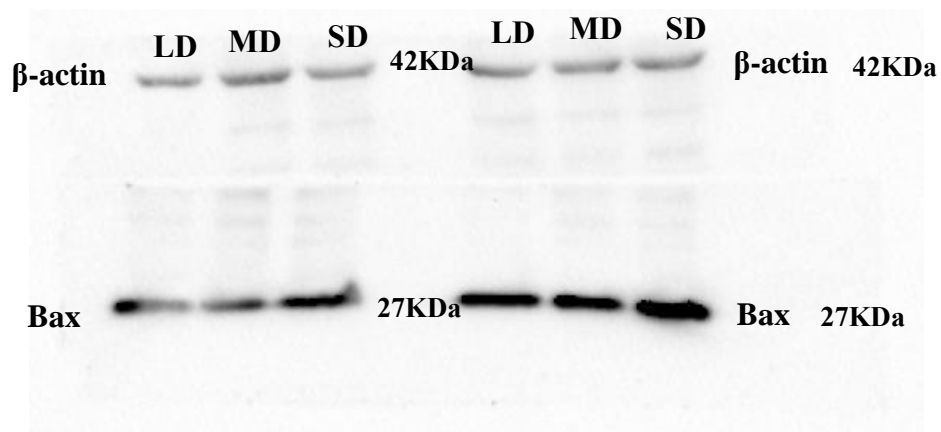




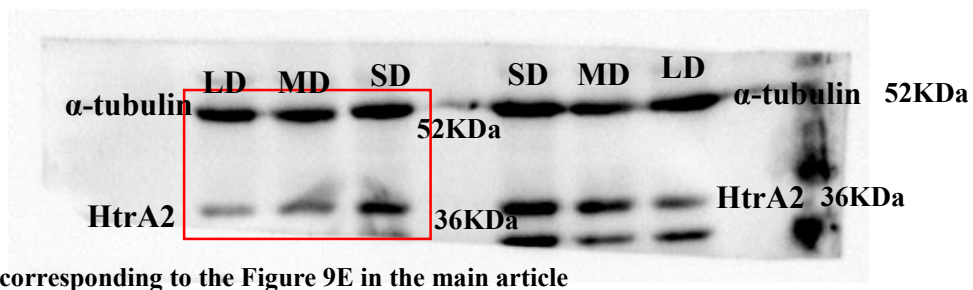
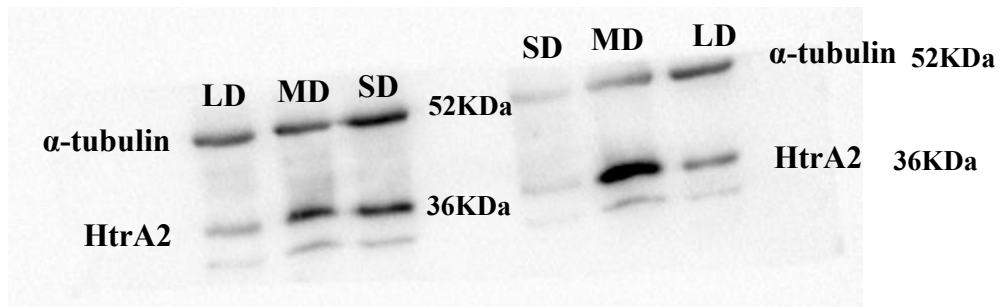
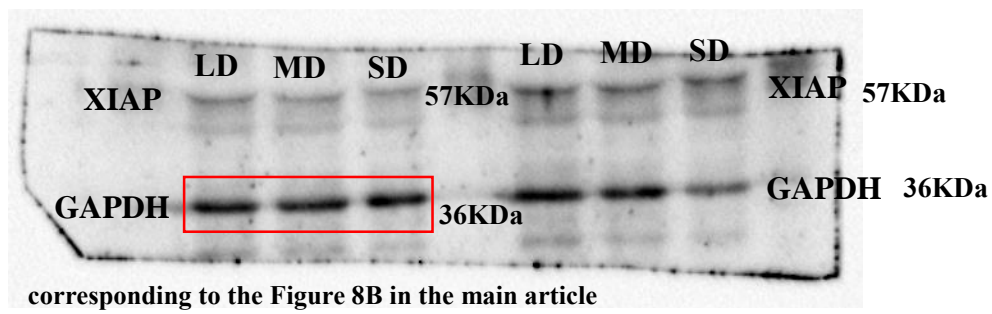
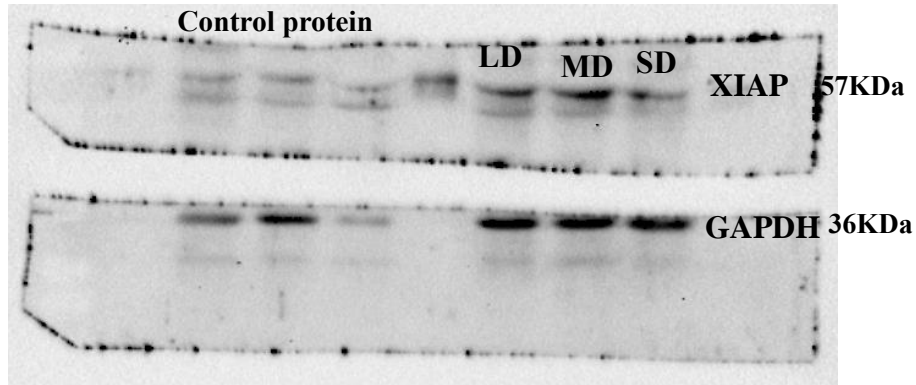
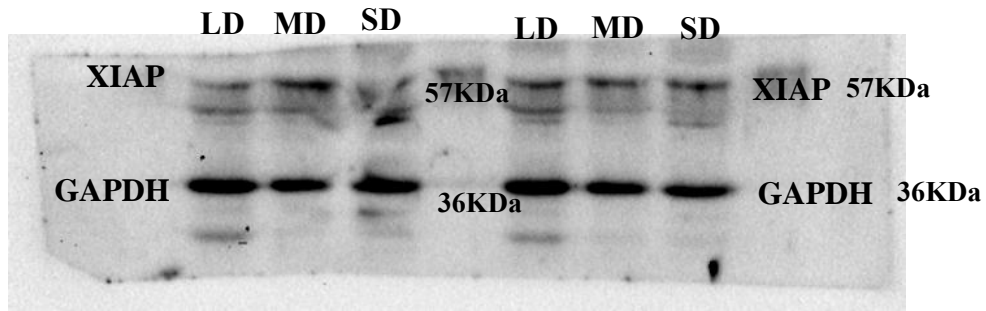


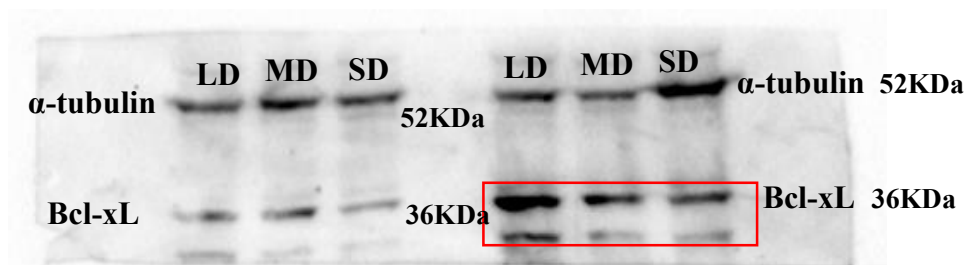
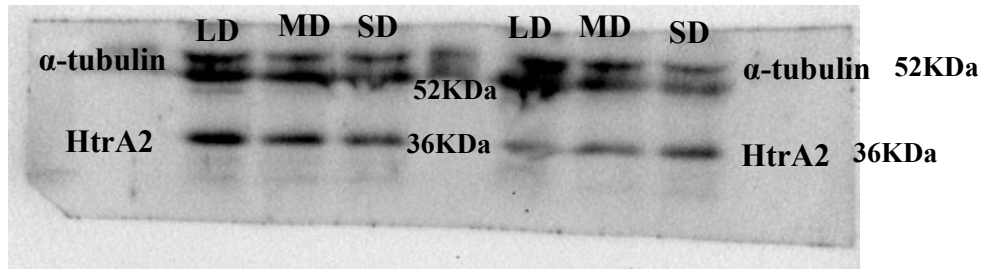
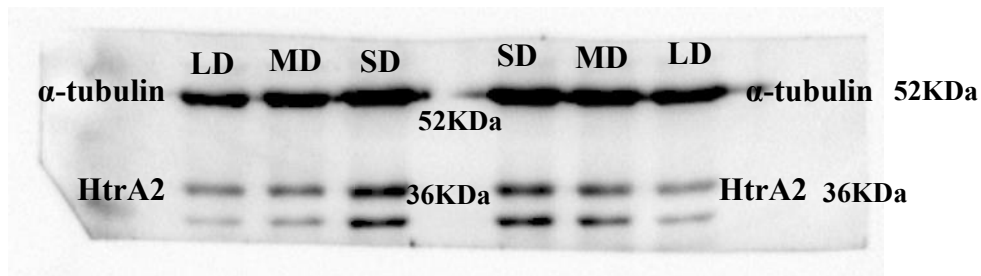




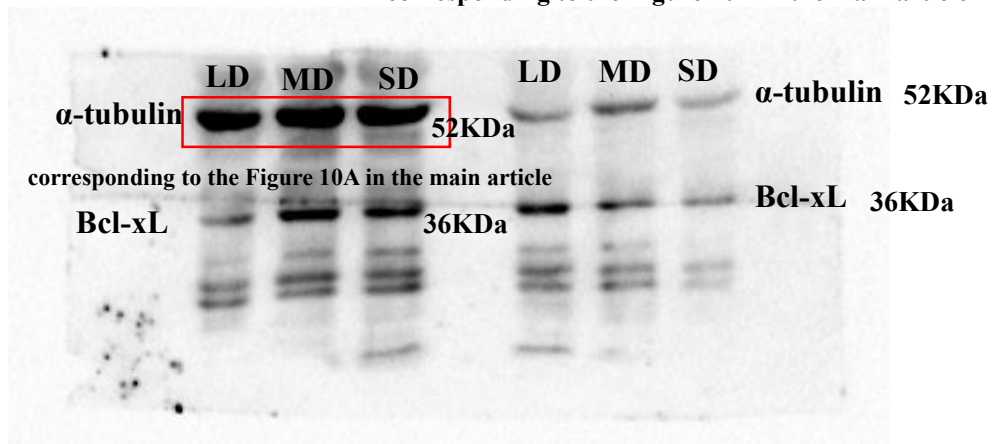


corresponding to the Figure 8B in the main article





corresponding to the Figure 10A in the main article



corresponding to the Figure 10A in the main article

