

Table S1. Distribution of different seawater intrusion values.

Range	Values	Classification
Three from three	3	High
Two from three	2	Average
One from three	1	Low
Zero from three	0	Very low

Table S2. Range of values for indication of seawater intrusion.

	Indicate SWI	Not indicate SWI
EC ($\mu\text{S}/\text{cm}$)	>2500	0-2500
Na/Cl	<1	>1
Cl/SO₄	>10	0-10

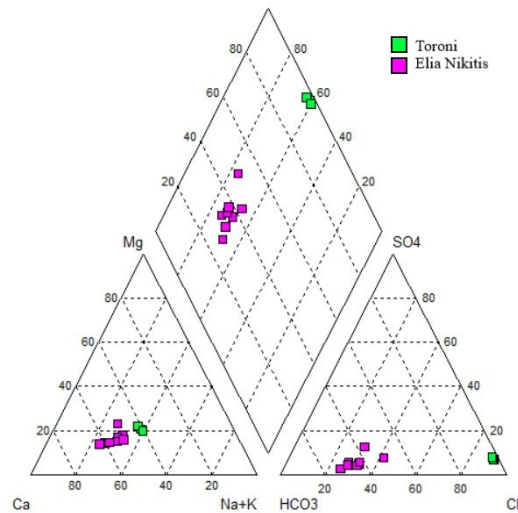


Figure S1. Classification of groundwater samples from Toroni and Elia Nikitis monitoring points in Piper diagram.

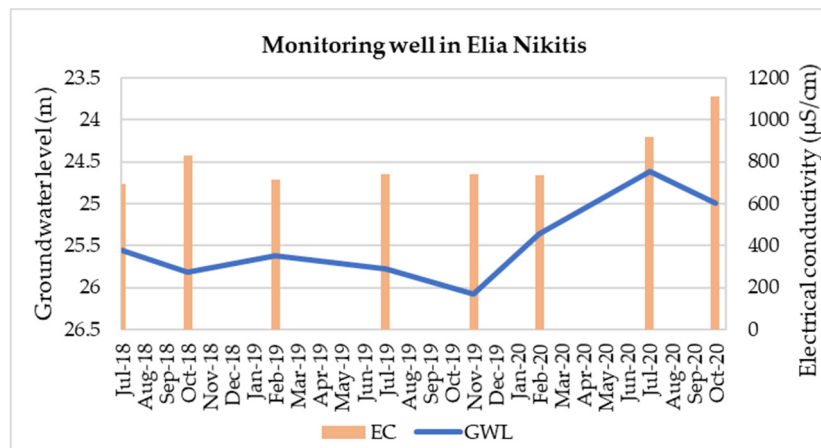


Figure S2. Variation of EC and GWL values in the monitoring well in Elia Nikitis.

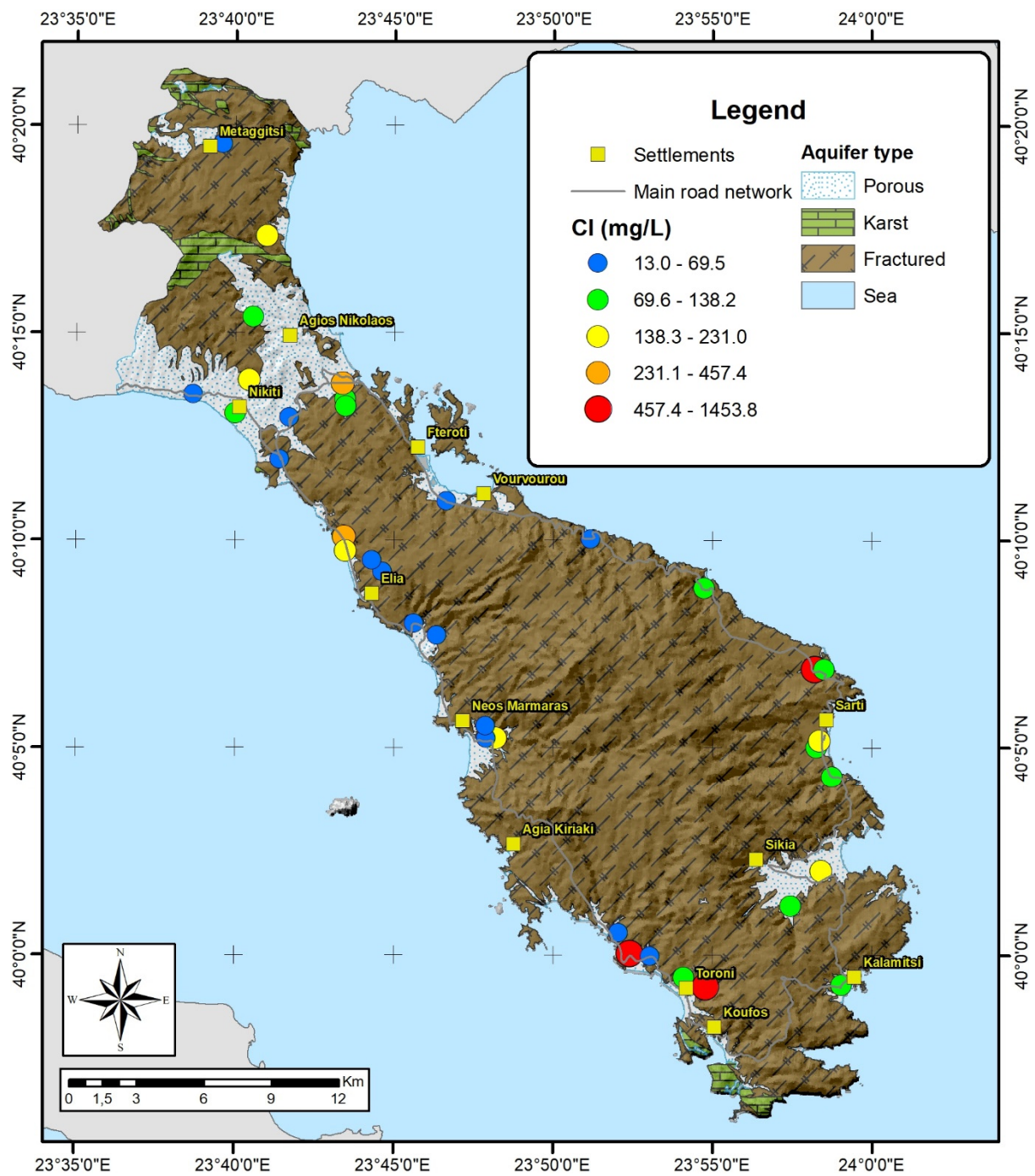


Figure S3. Spatial distribution of the CI values in the study area.

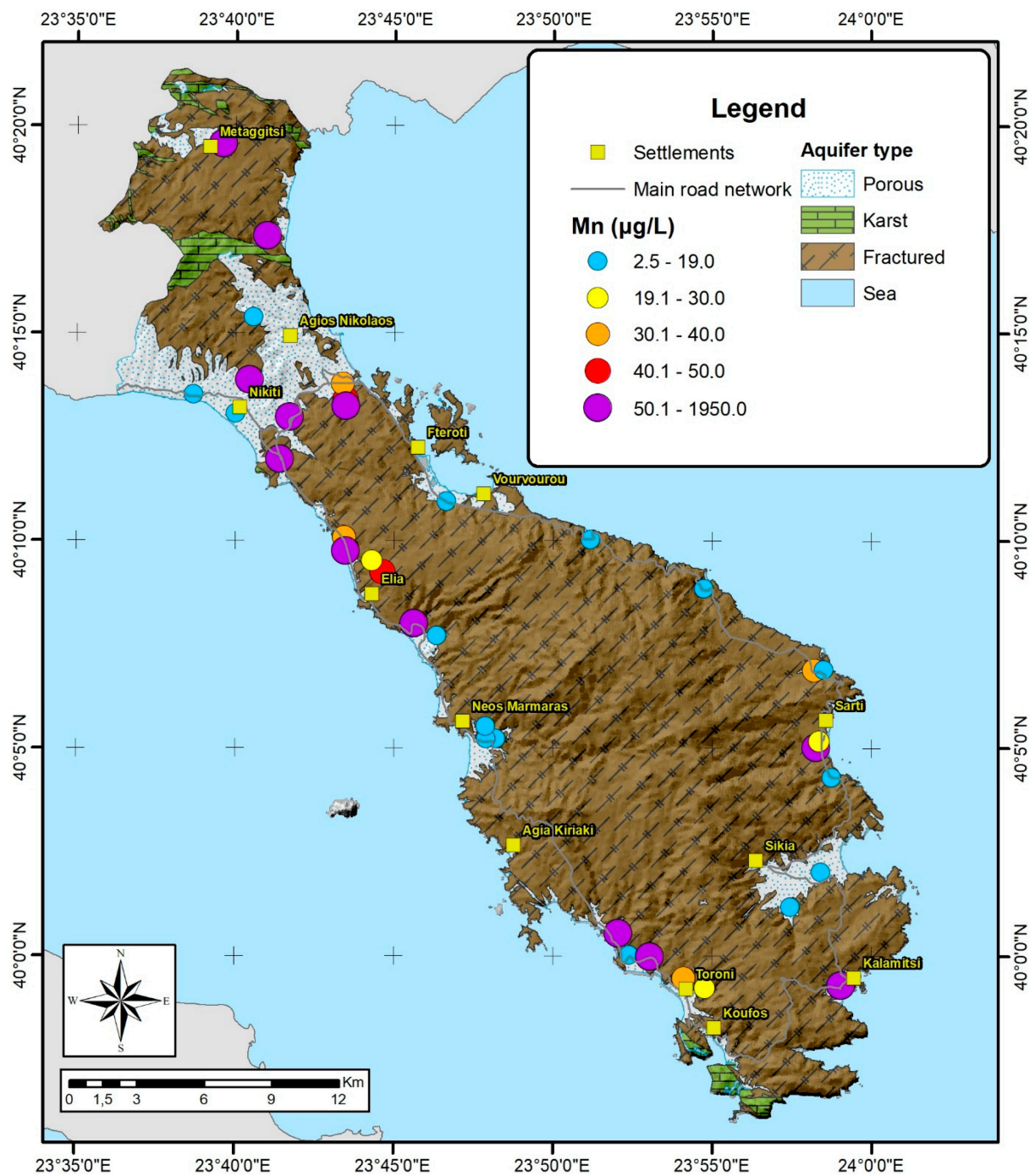


Figure S4. Spatial distribution of the Mn values in the study area.

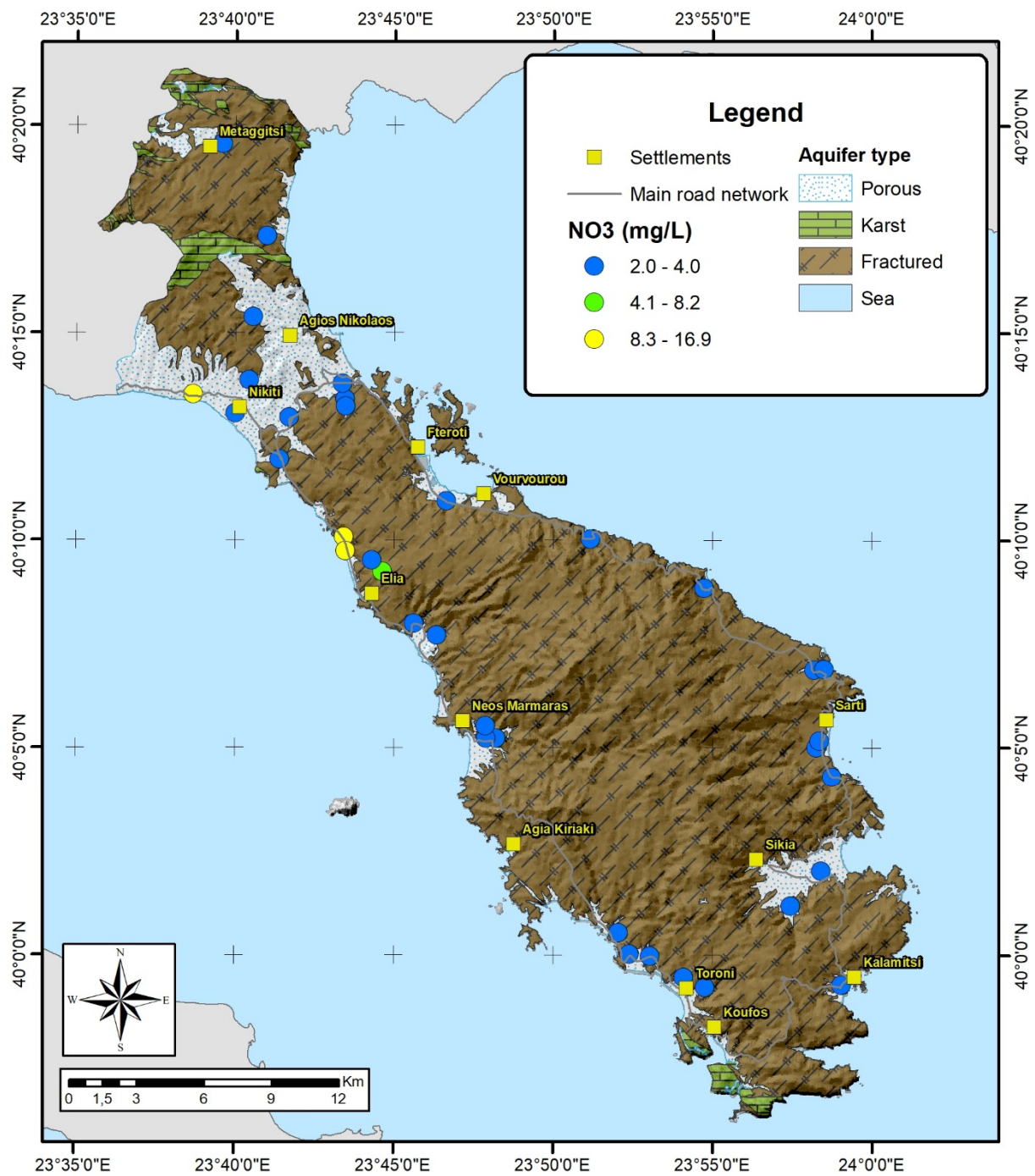


Figure S5. Spatial distribution of the NO₃ values in the study area.