

Supplemental File – S2

Selected hydrographs for municipal and observation wells in the Northeast
Groundwater Management Area, Wisconsin, USA

Communities in Northern Cone Include:

Ashwaubenon (Village)

Bellevue (Village)

De Pere (City)

Green Bay (City)

Hobart (Village)

Howard (Village)

Scott (Town)

Communities in Southern Cone Include:

Darboy (Unincorporated)

Kimberly (Village)

Kaukauna (City)

Little Chute (Village)

Holland (Town)

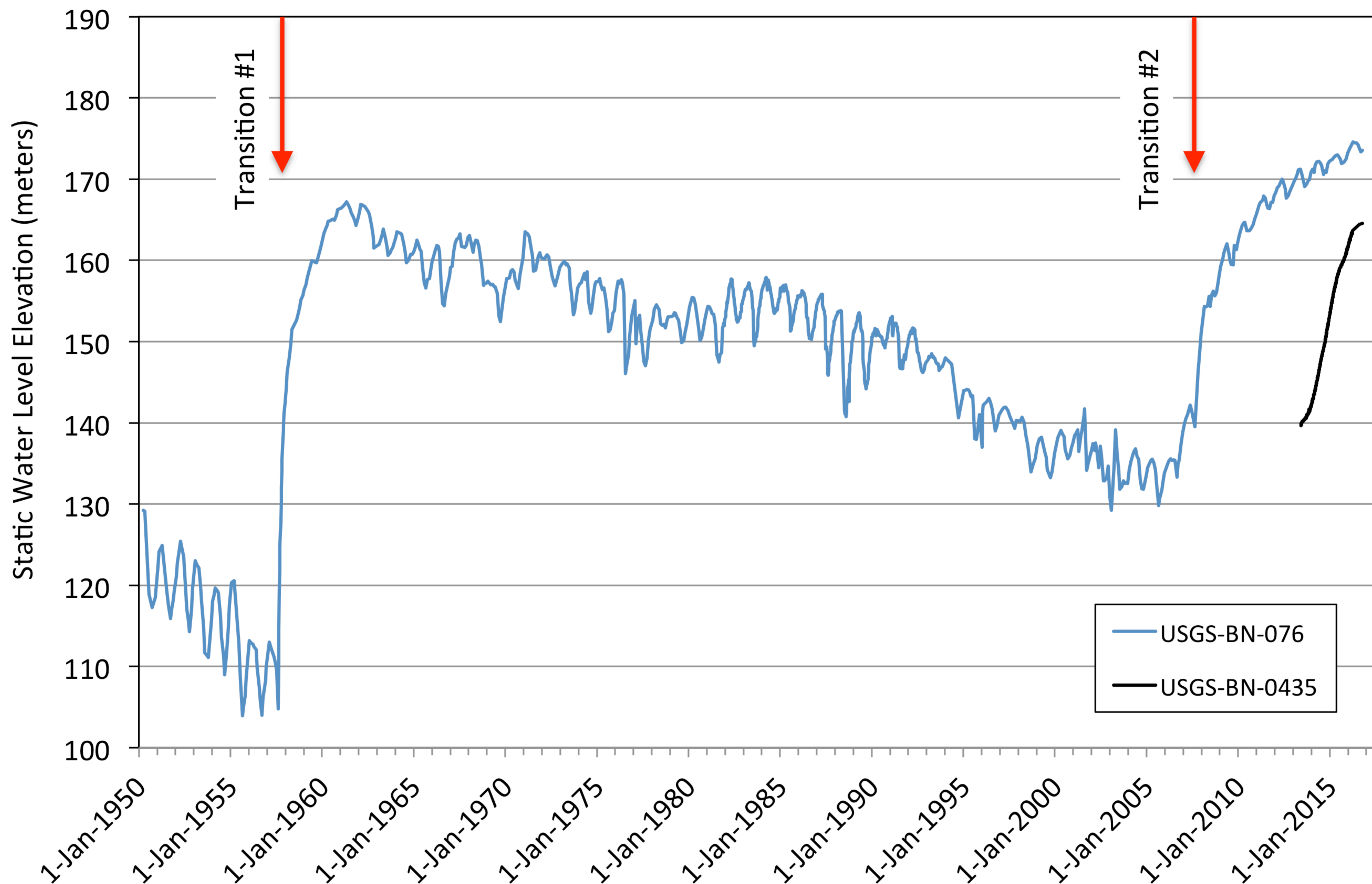
Wells in Other Parts of the GMA:

Forest Junction (Unincorporated)

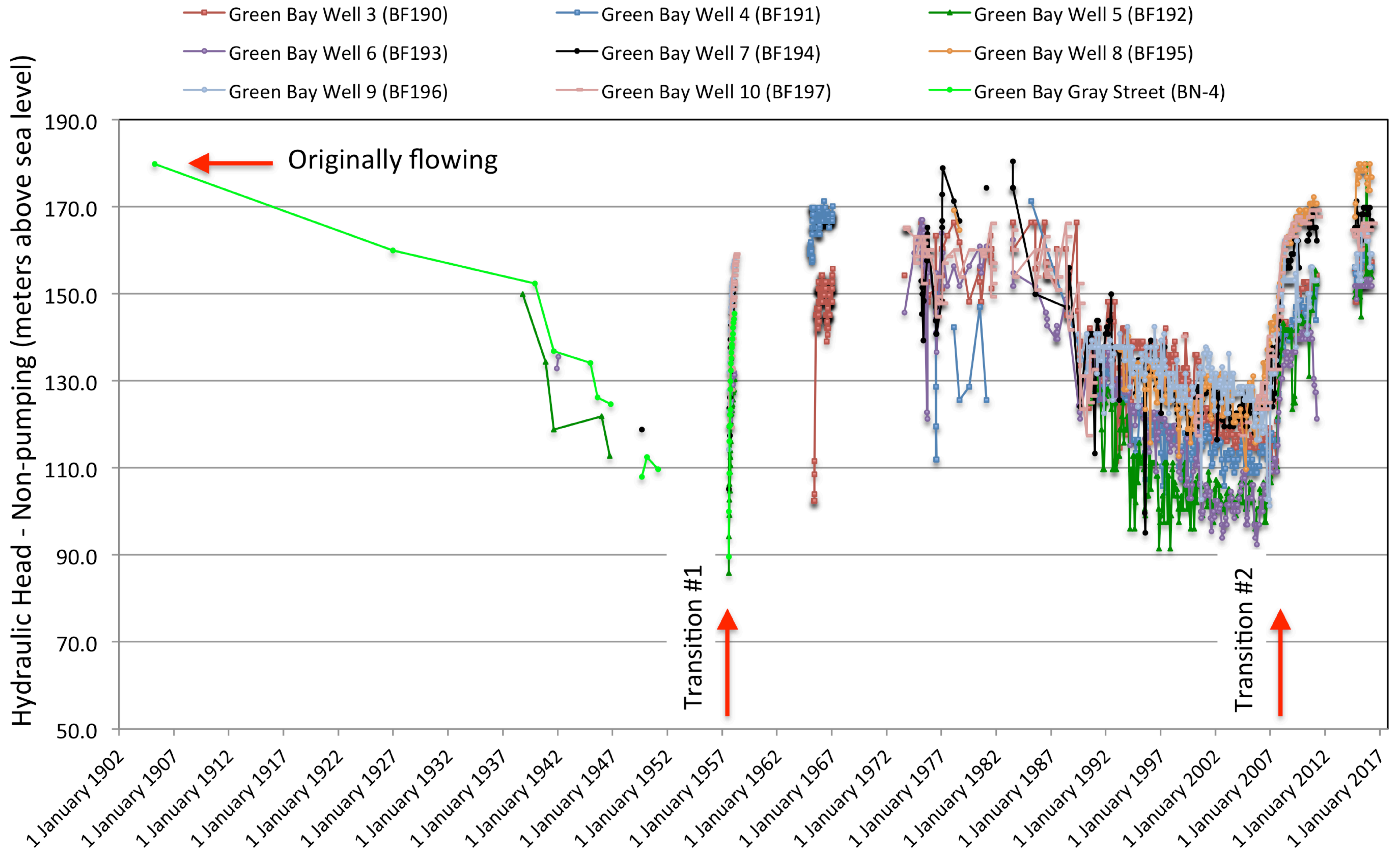
Pulaski (Village)

Wrightstown (Village)

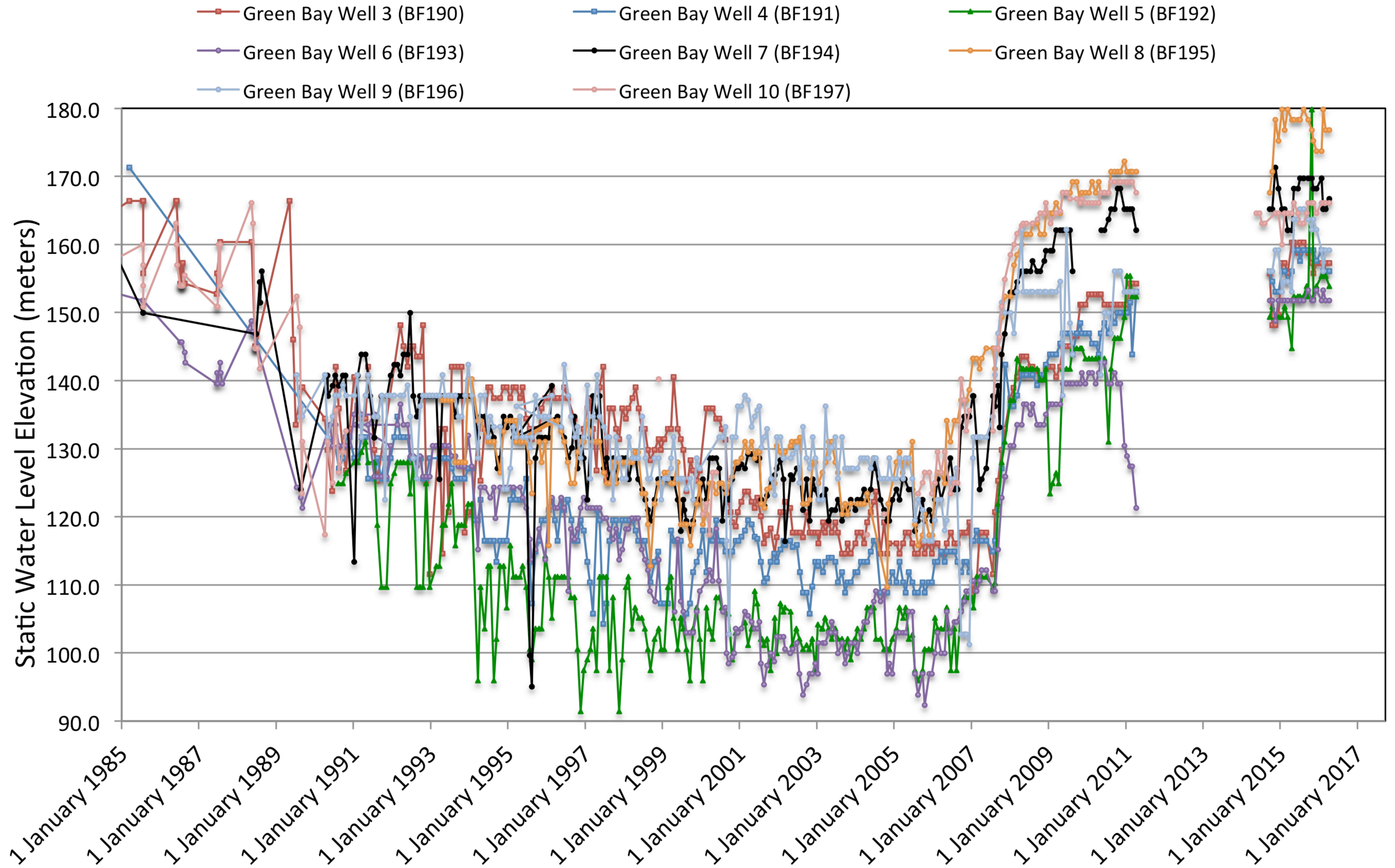
Hydrographs for USGS Monitored Wells in Northern Cone



Hydrographs for Selected Wells in the City of Green Bay



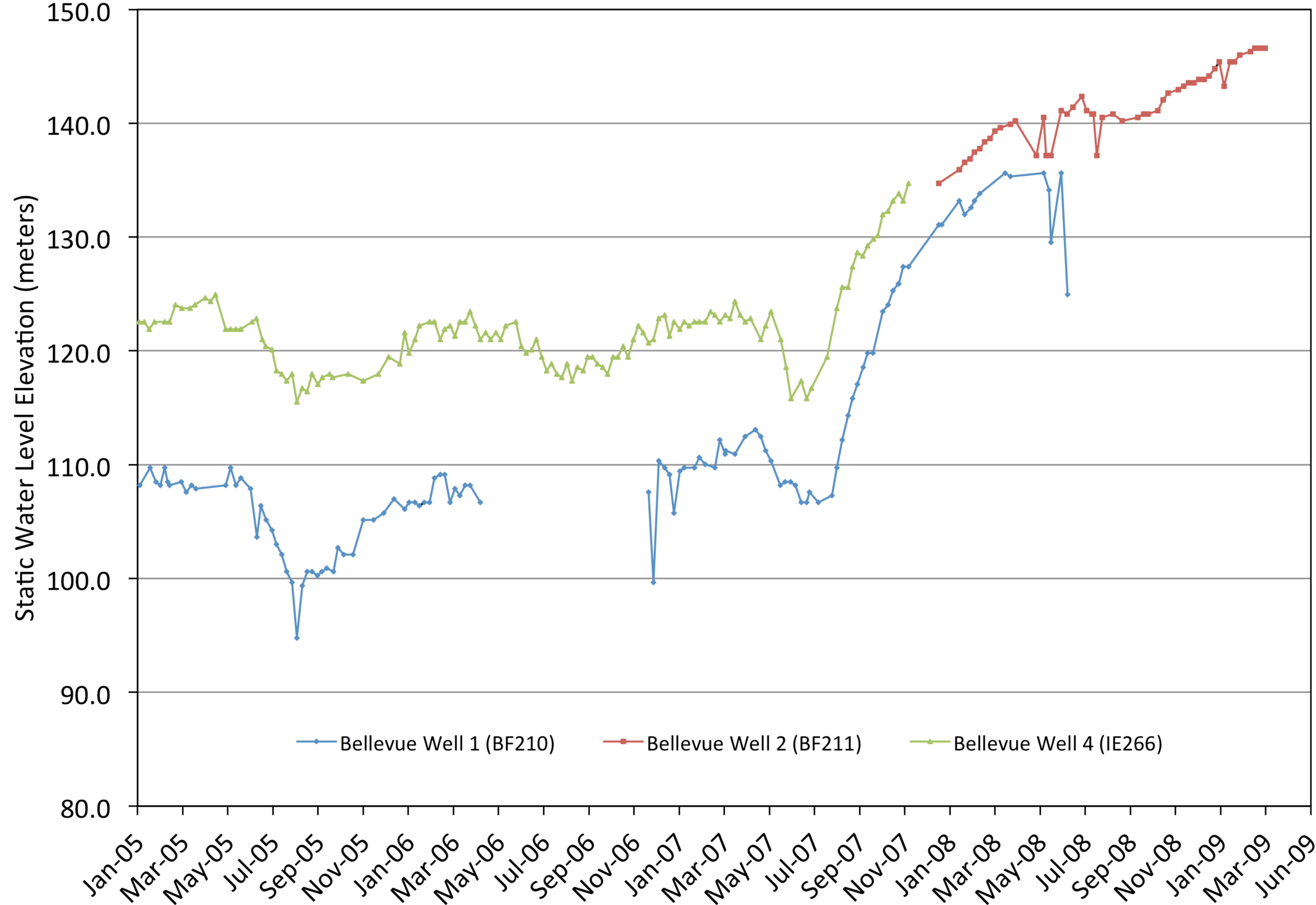
Hydrographs for Selected Wells in the City of Green Bay



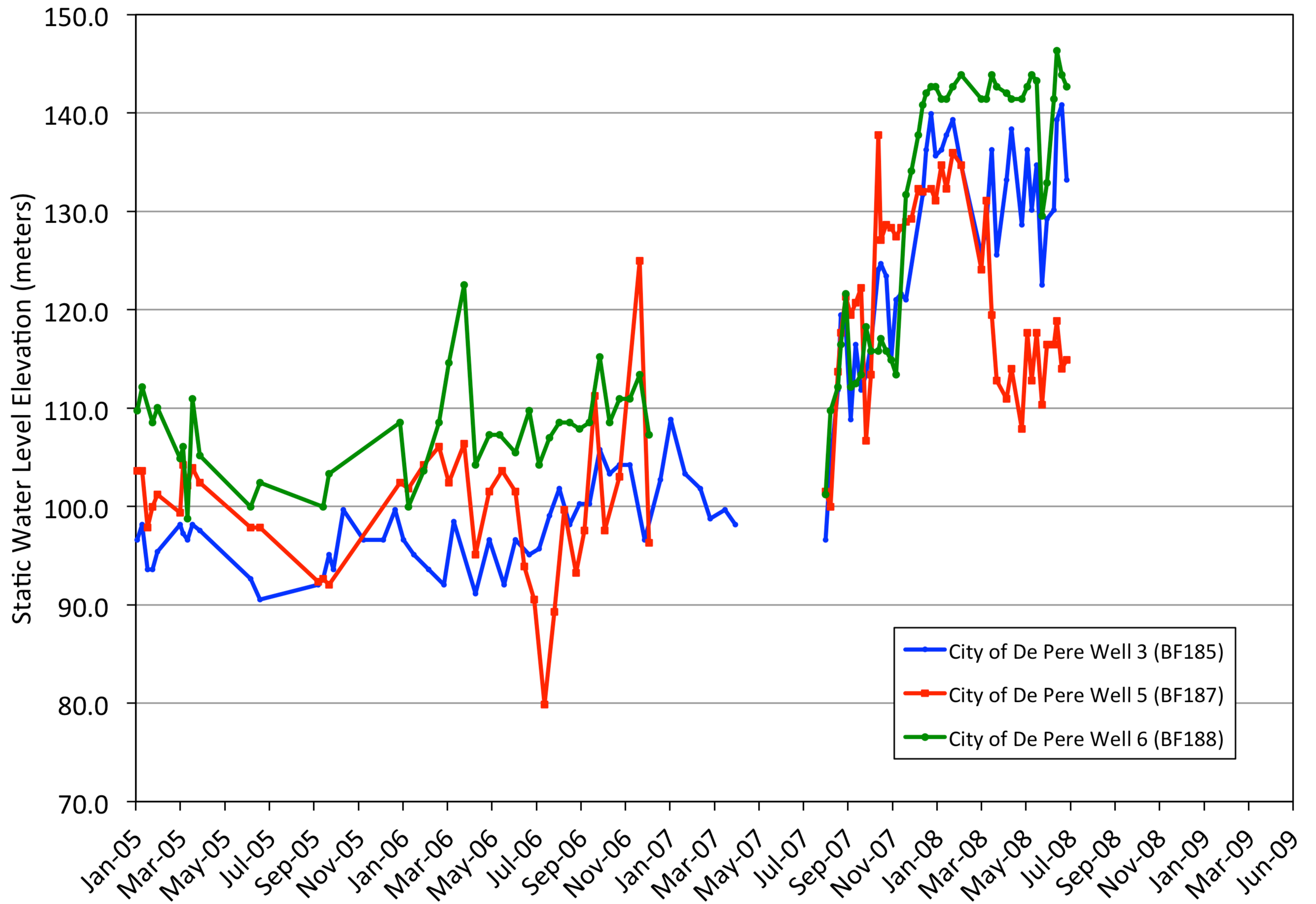
Village of Ashwaubenon Hydrographs (Northern Cone)



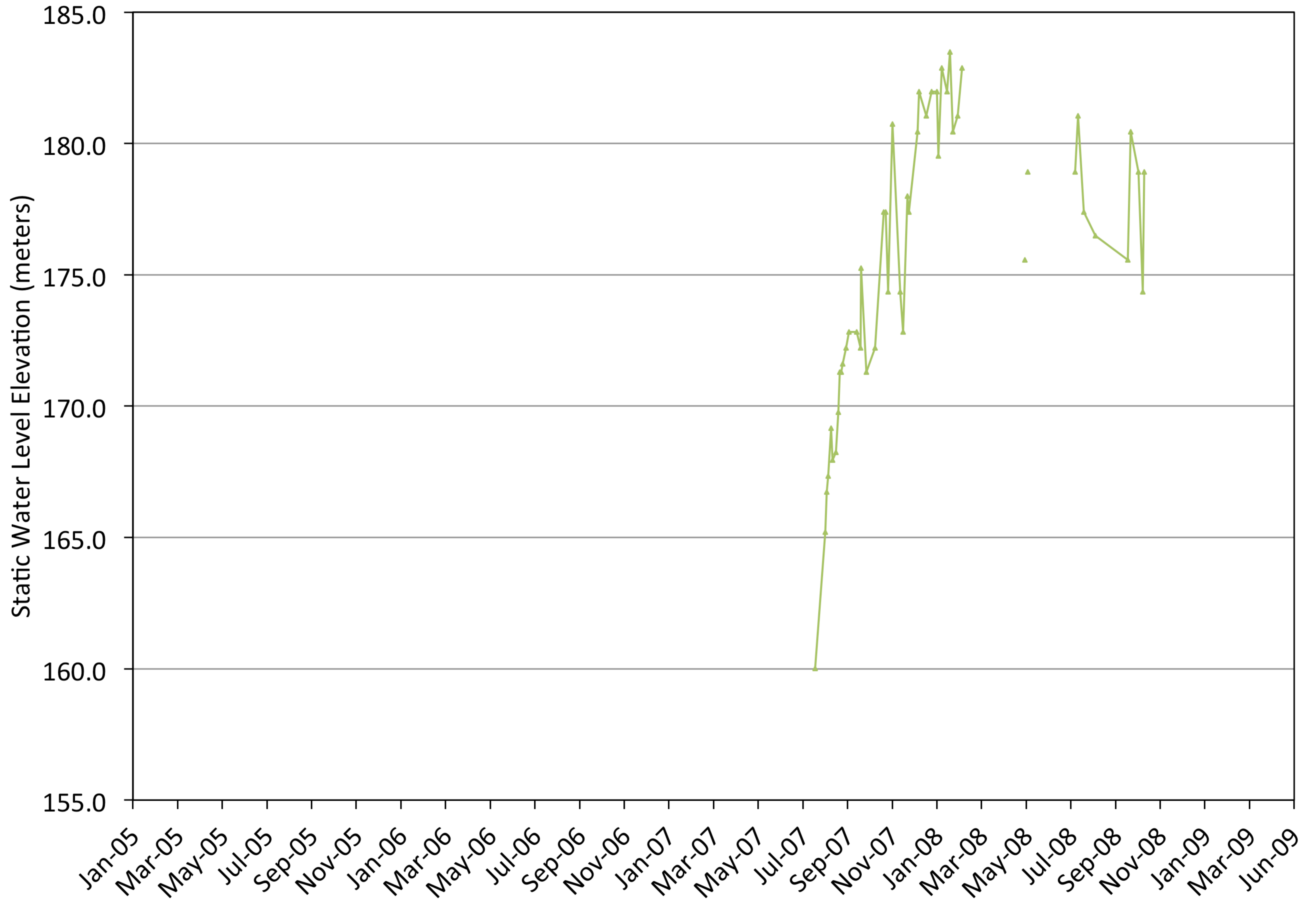
Village of Bellevue Hydrographs (Northern Cone, east side)



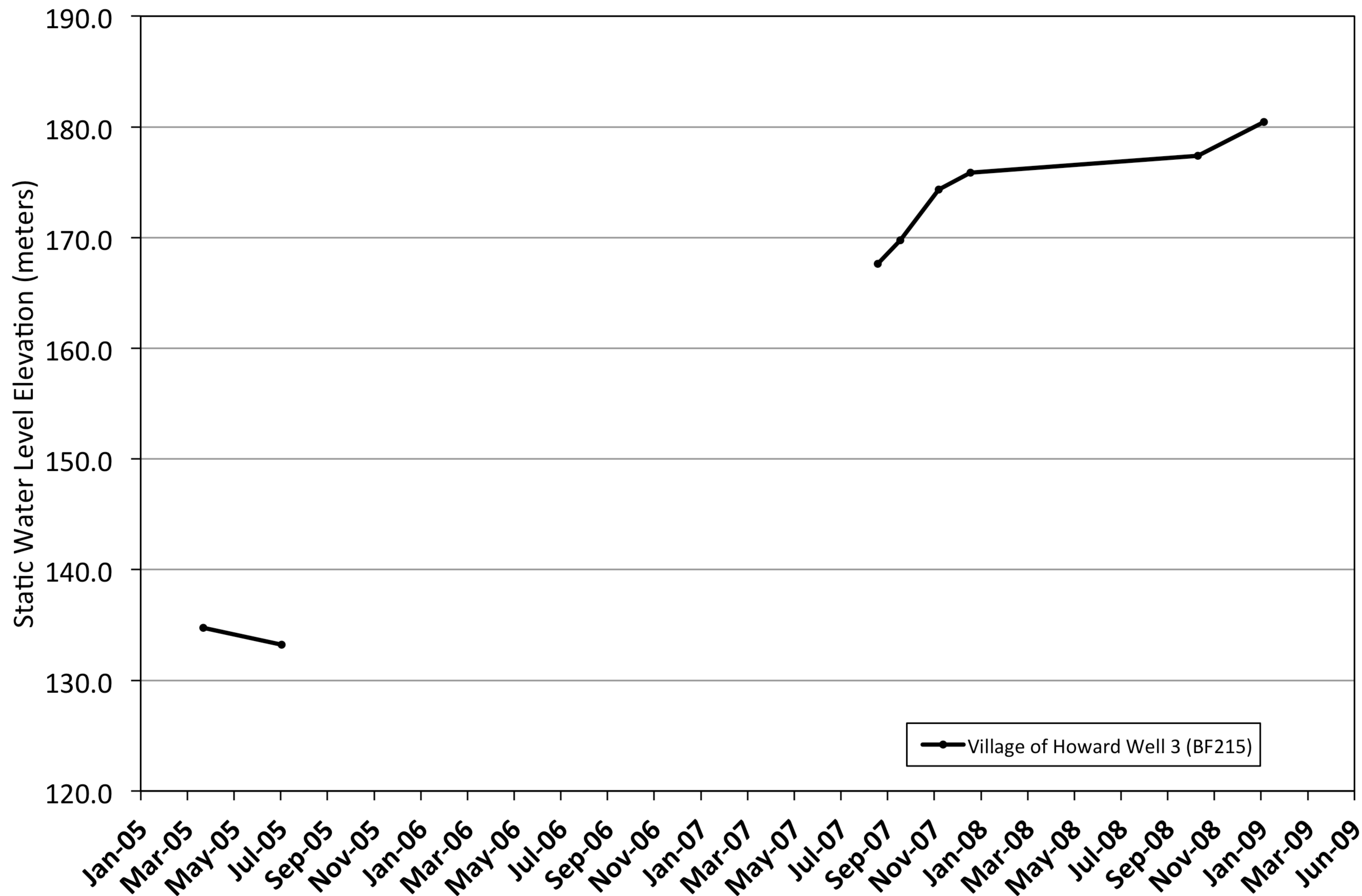
City of De Pere Hydrographs (Northern Cone, center)



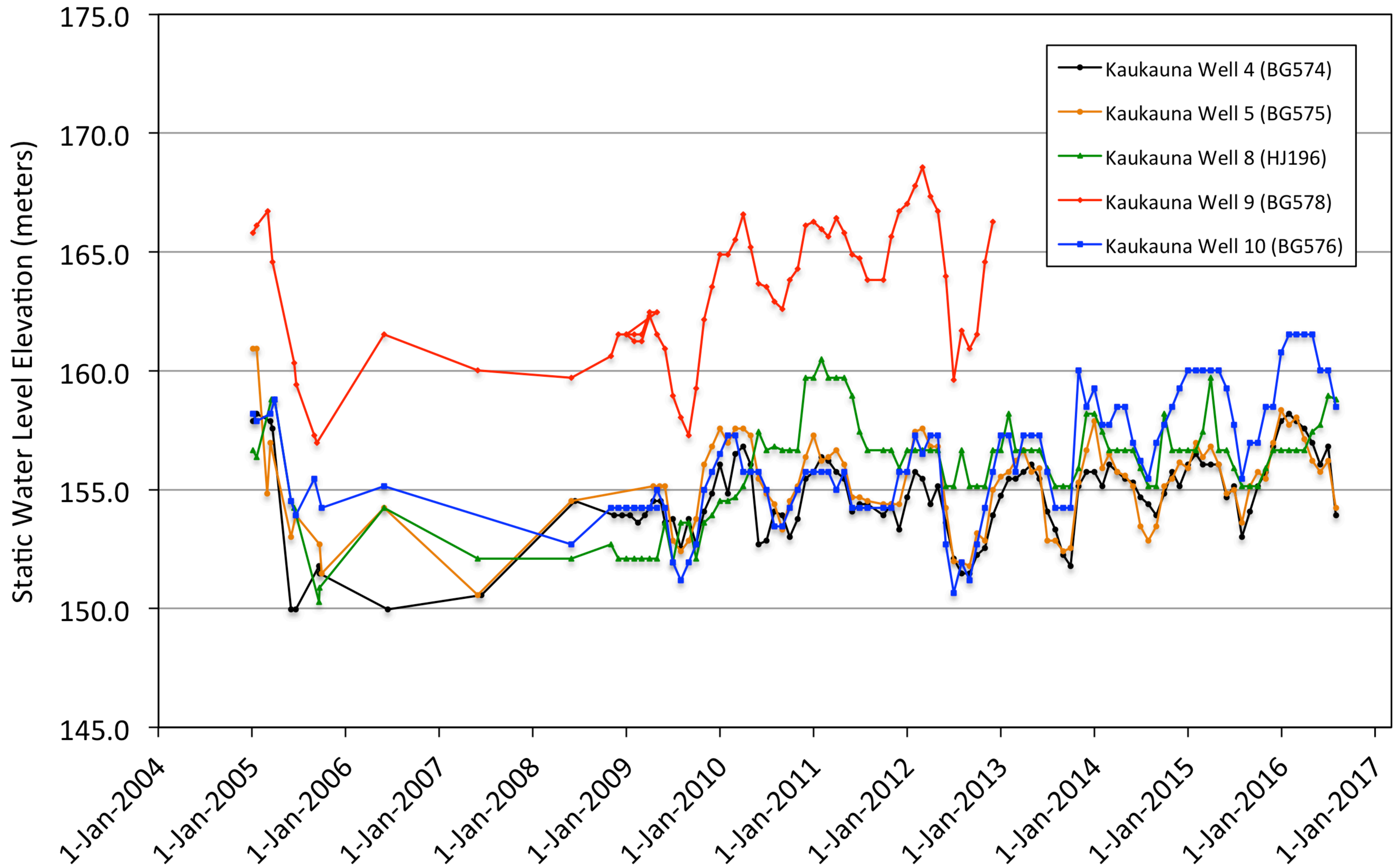
Village of Hobart Hydrograph (Northern Cone, west side)



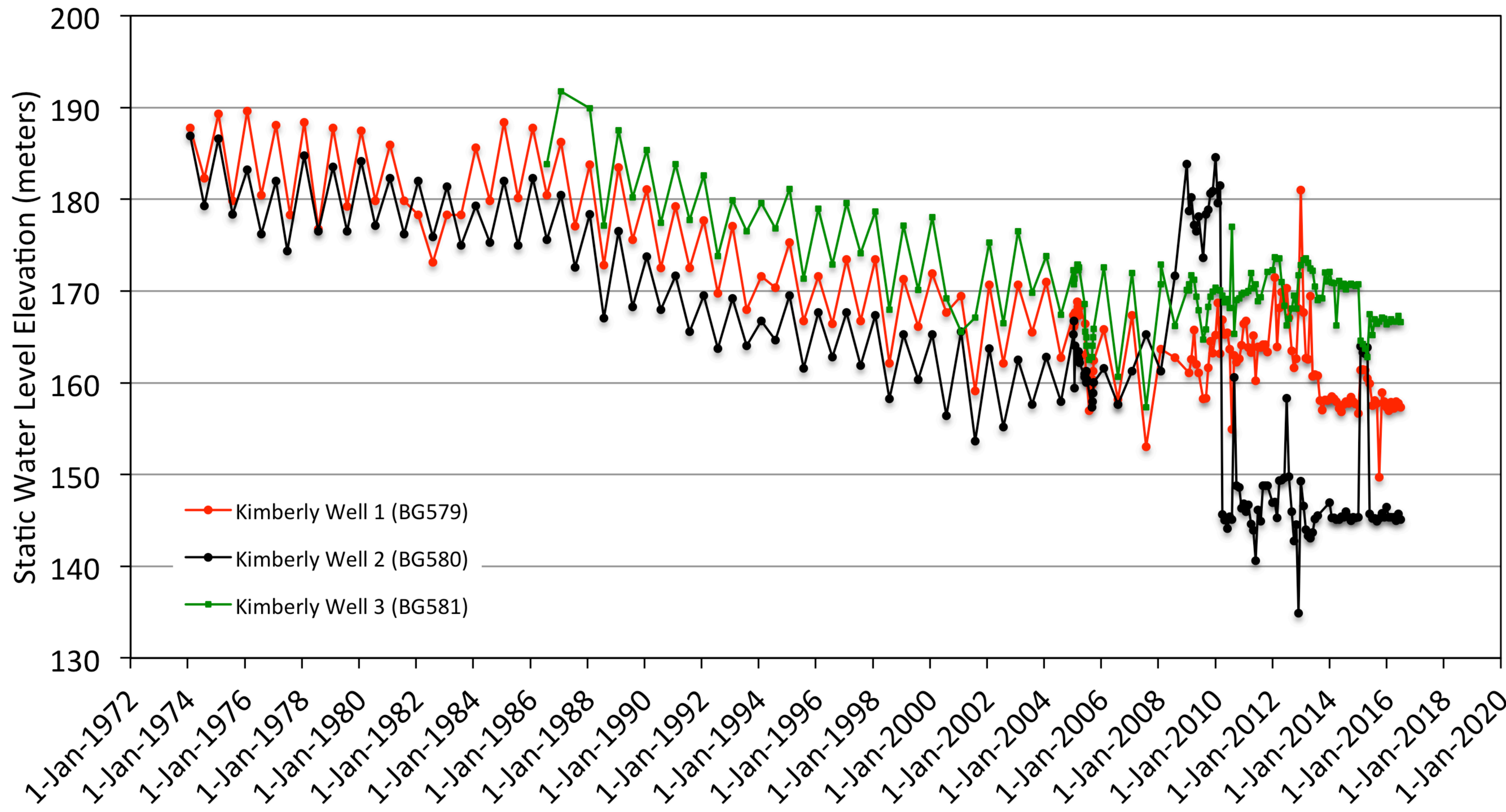
Village of Howard Hydrograph (Northern Cone, northwest side)



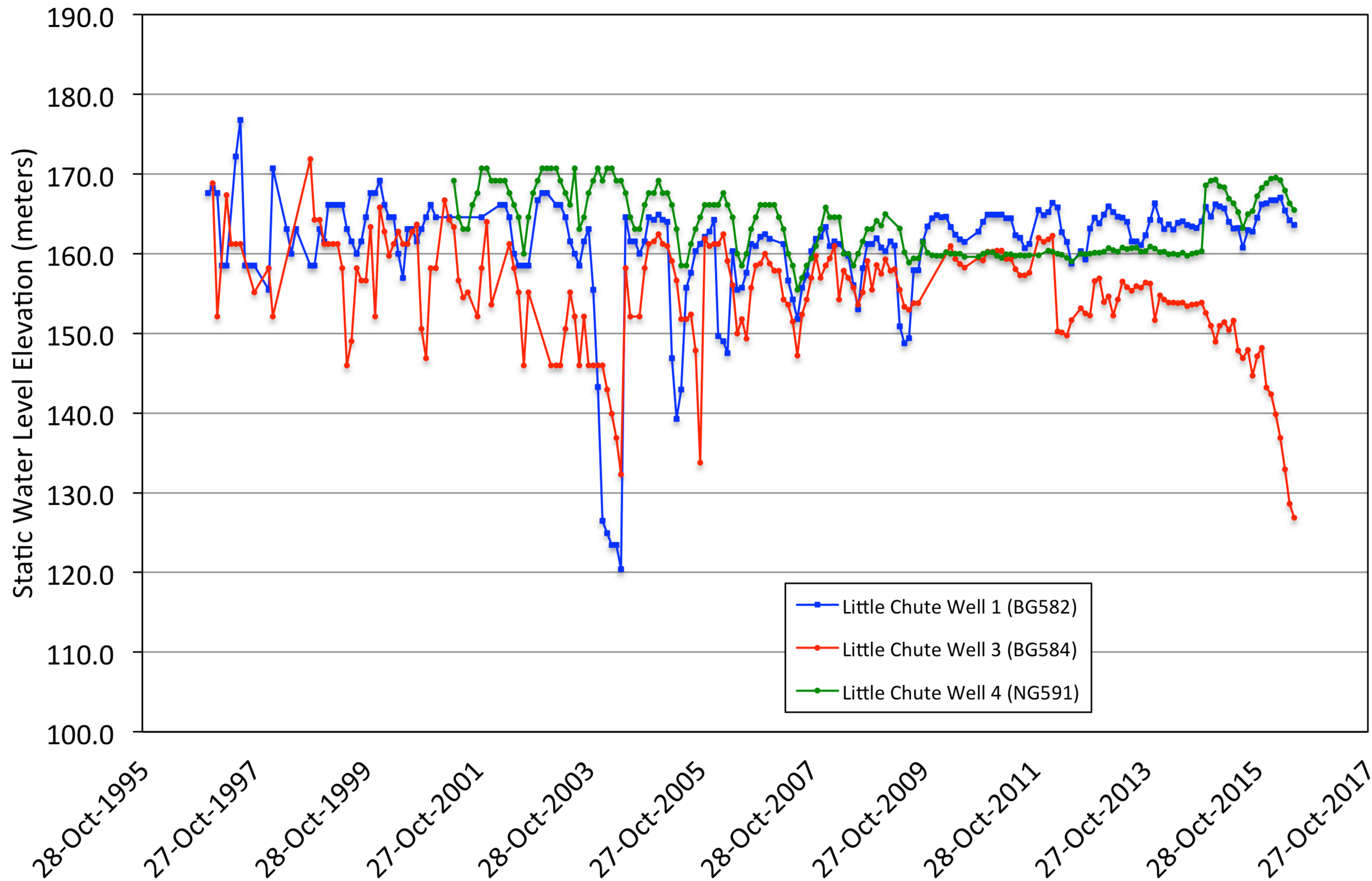
Hydrographs of Kaukauna Wells (Southern Cone)



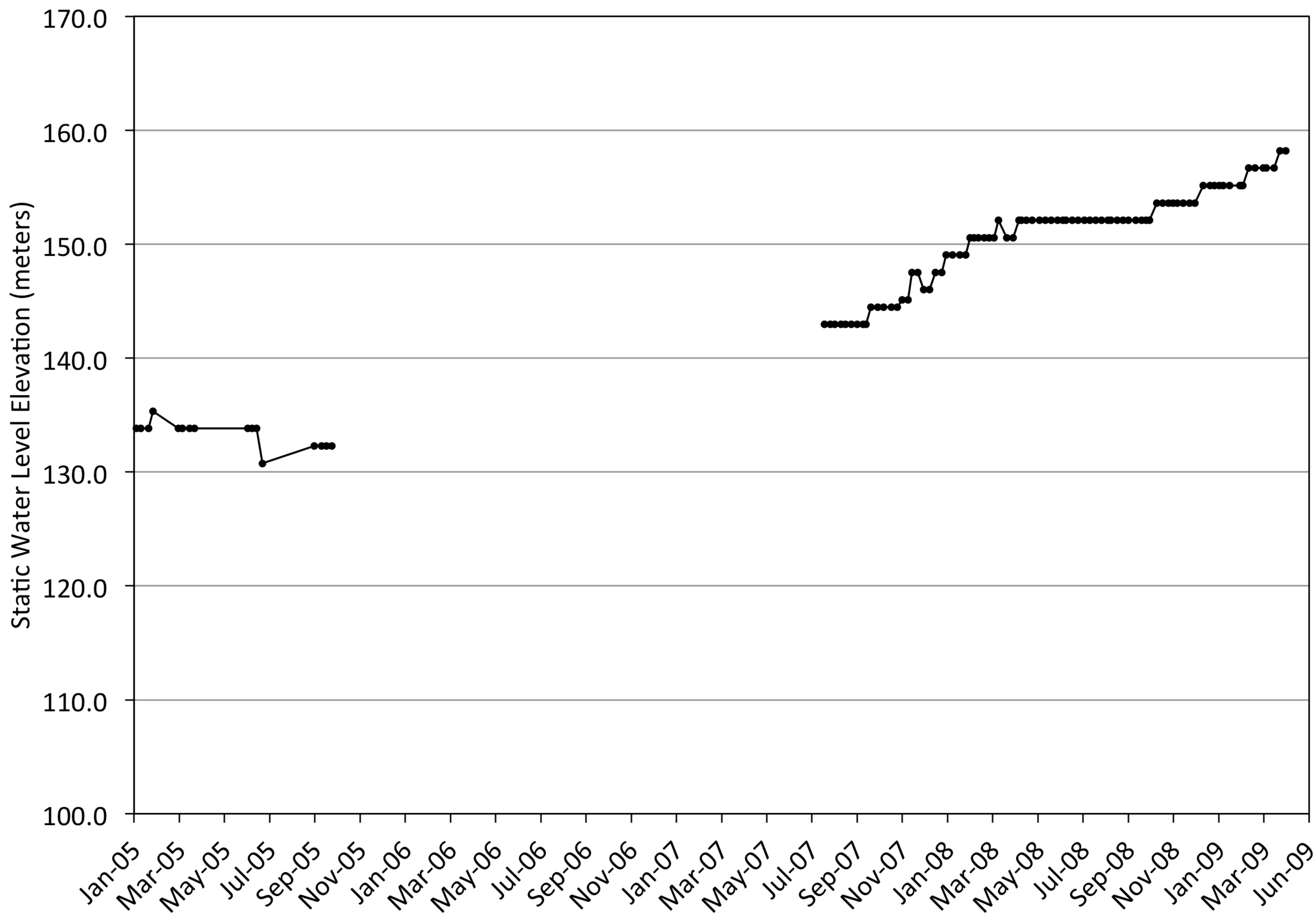
Hydrographs of Kimberly Wells (Southern Cone)



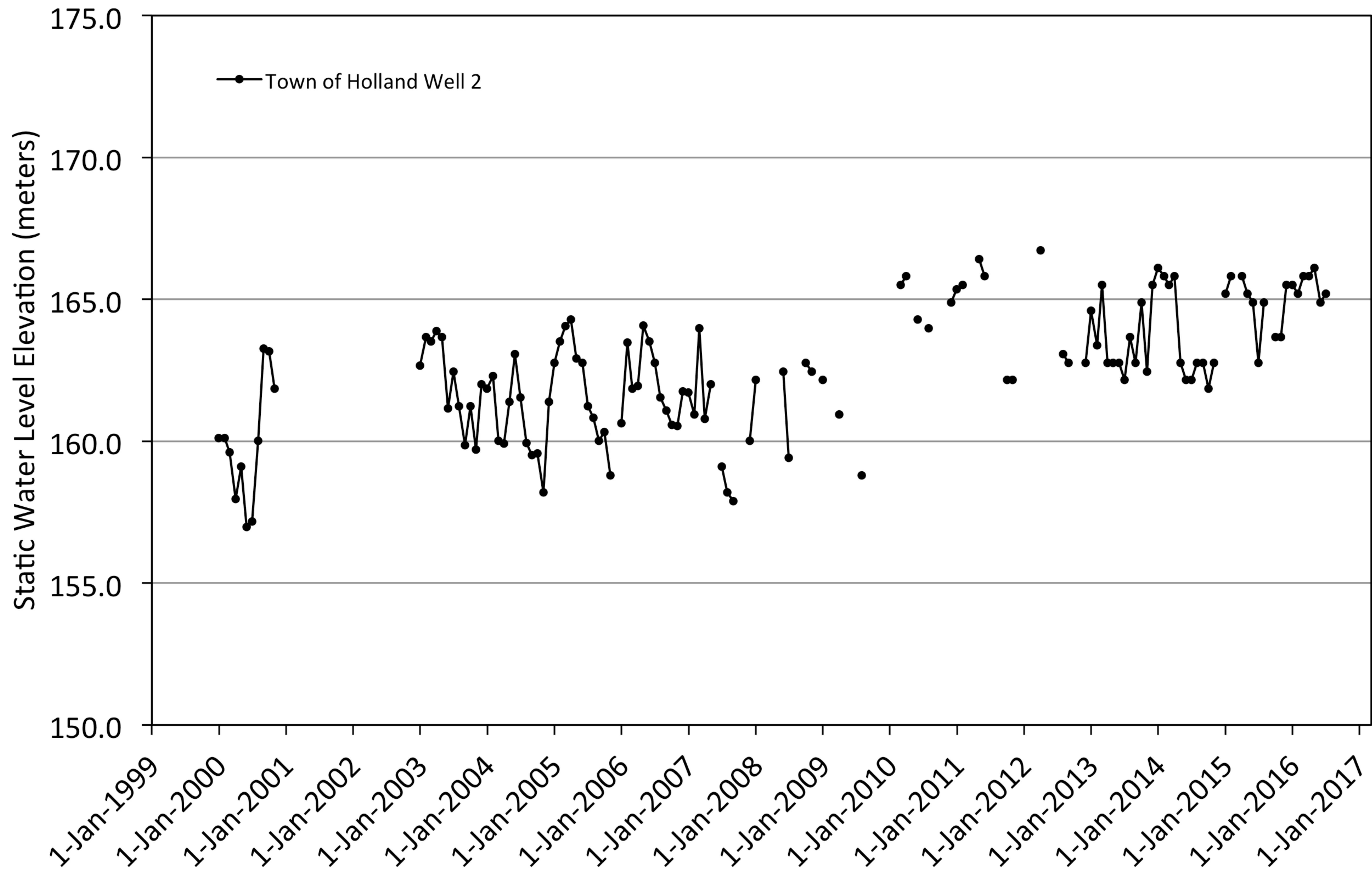
Hydrographs of Little Chute Wells (Southern Cone)



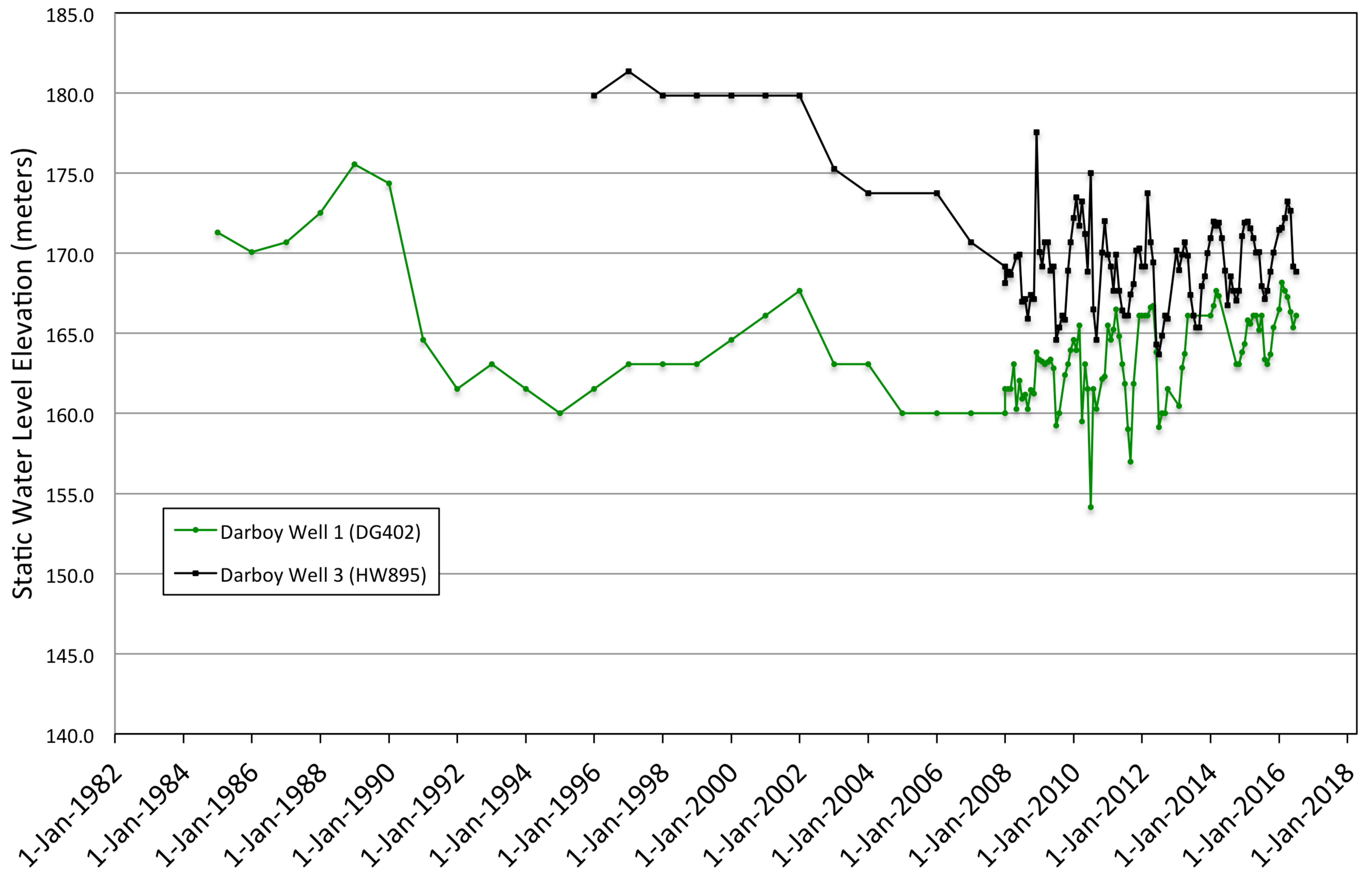
Town of Scott Hydrograph (Northern Cone, northeast side)



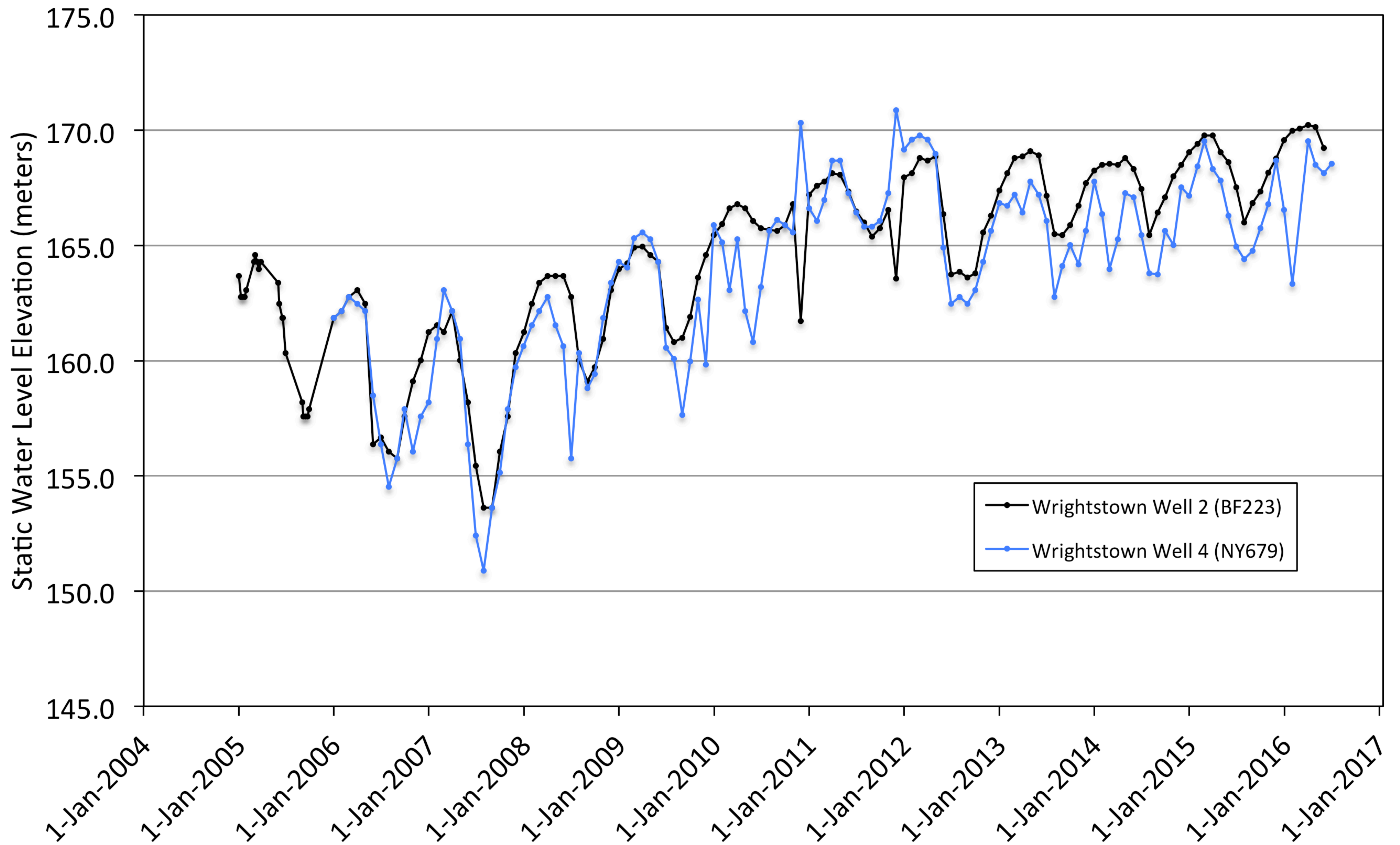
Hydrograph of Town of Holland Well 2 (CL048; East of Southern Cone)



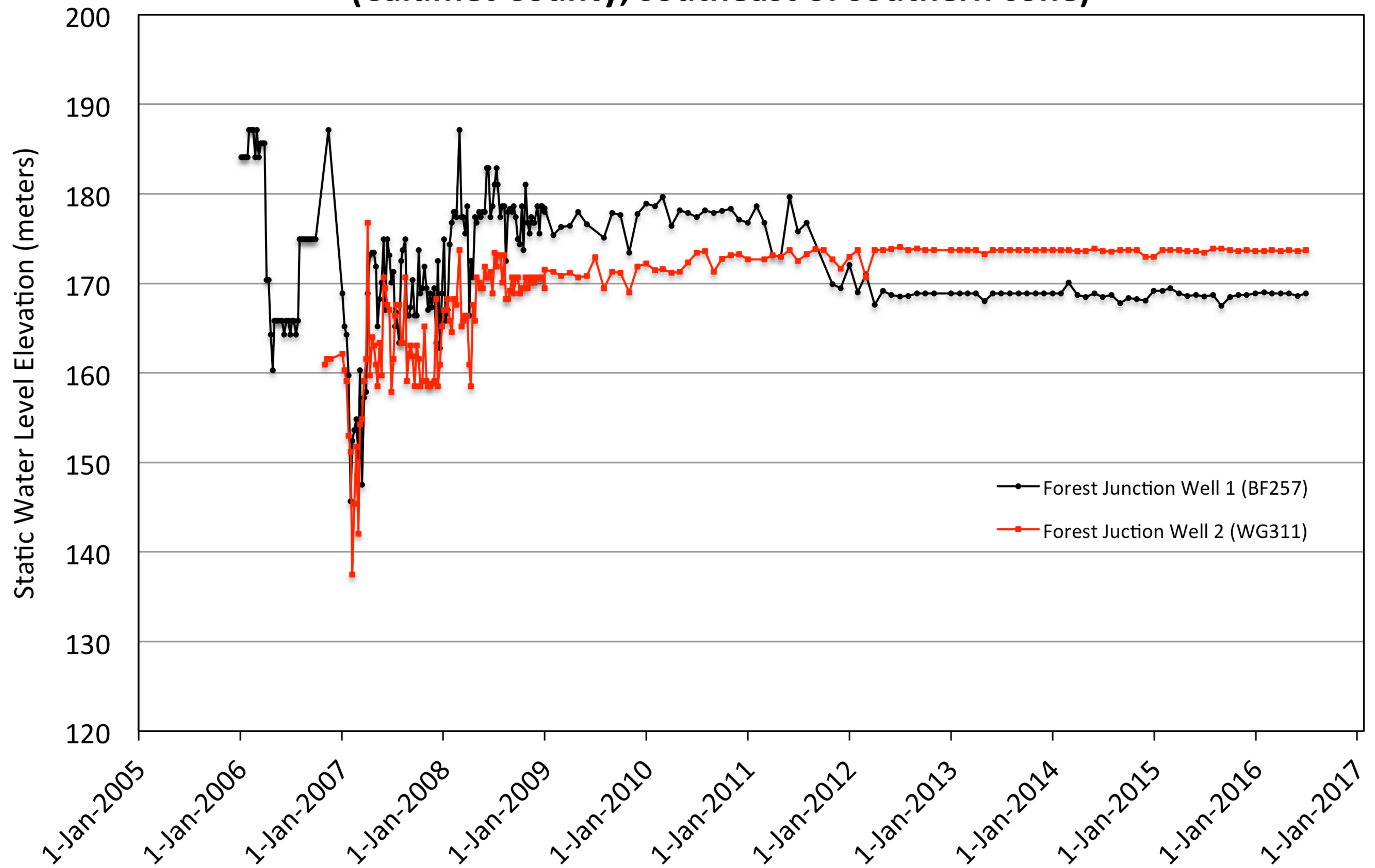
Hydrographs of Darboy Wells (Southern Cone)



Wrightstown Hydrographs (in Brown County, between two major cones)



Hydrographs of Forest Junction Wells (Calumet County; southeast of southern cone)



Village of Pulaski (far northwest part of GMA; not in either cone)

