

Geosciences-276077 Supplementary Materials

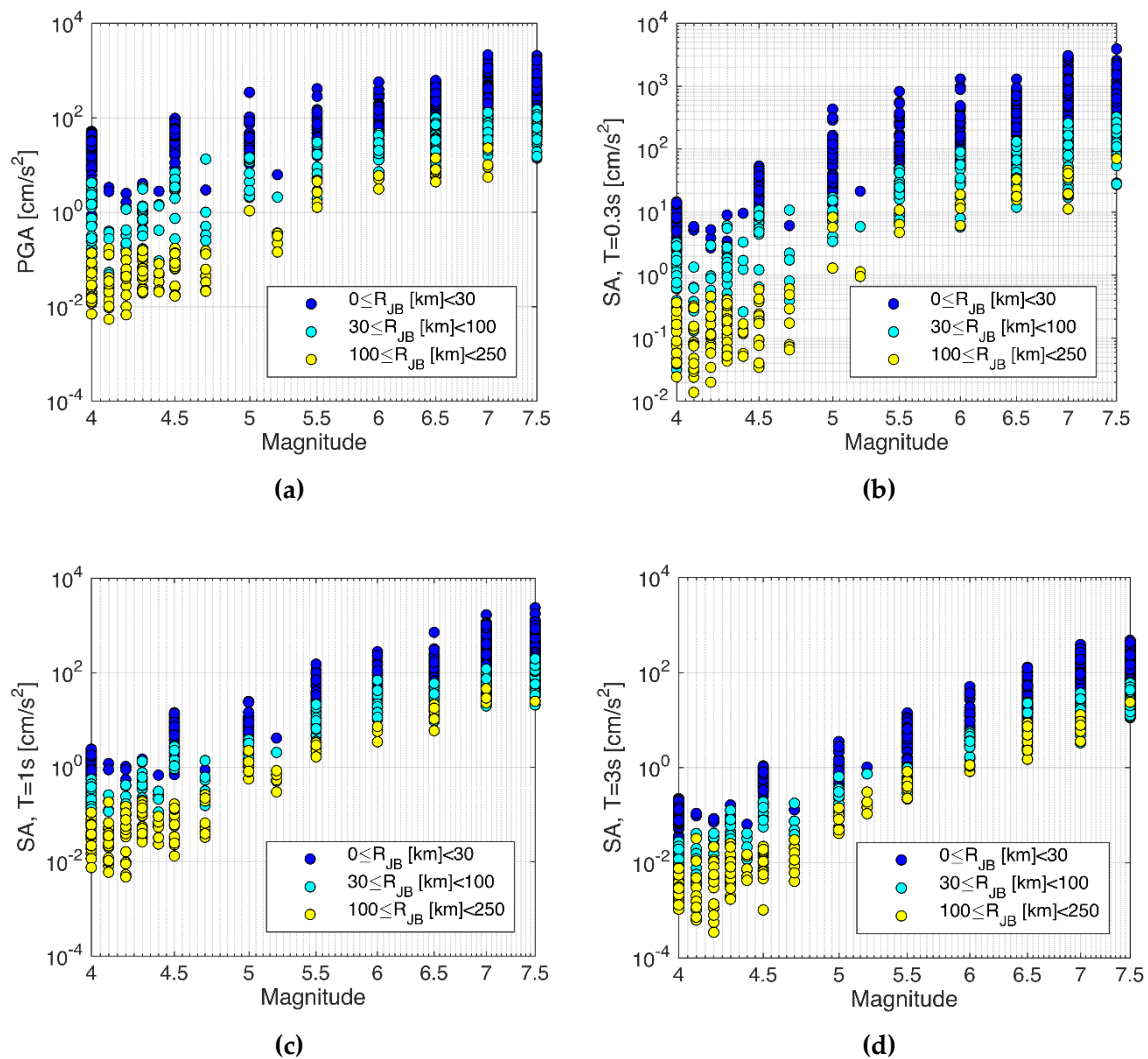
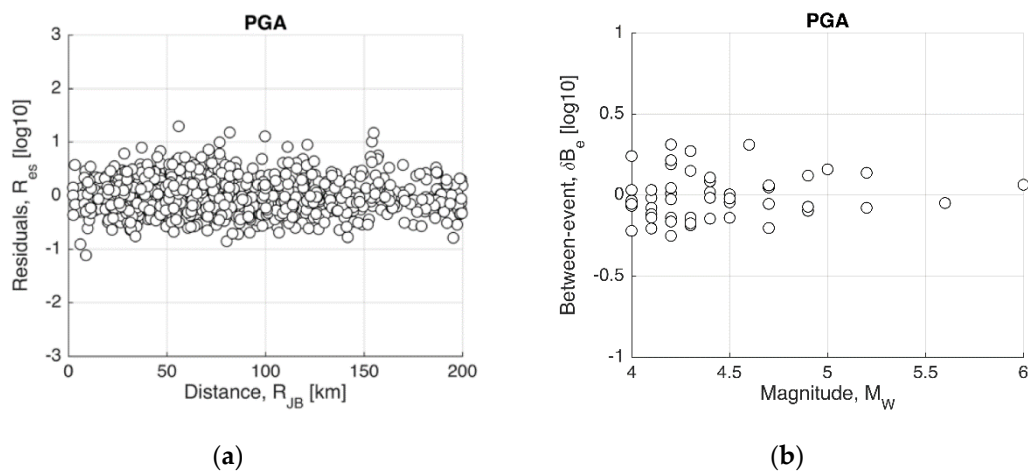


Figure A1. Distribution of ground-motion parameters of SET1 as a function of magnitude for different classes of distances: (a) PGA; (b) SA-T=0.3s; (c) SA-T=1s; (d) SA-T=3s.



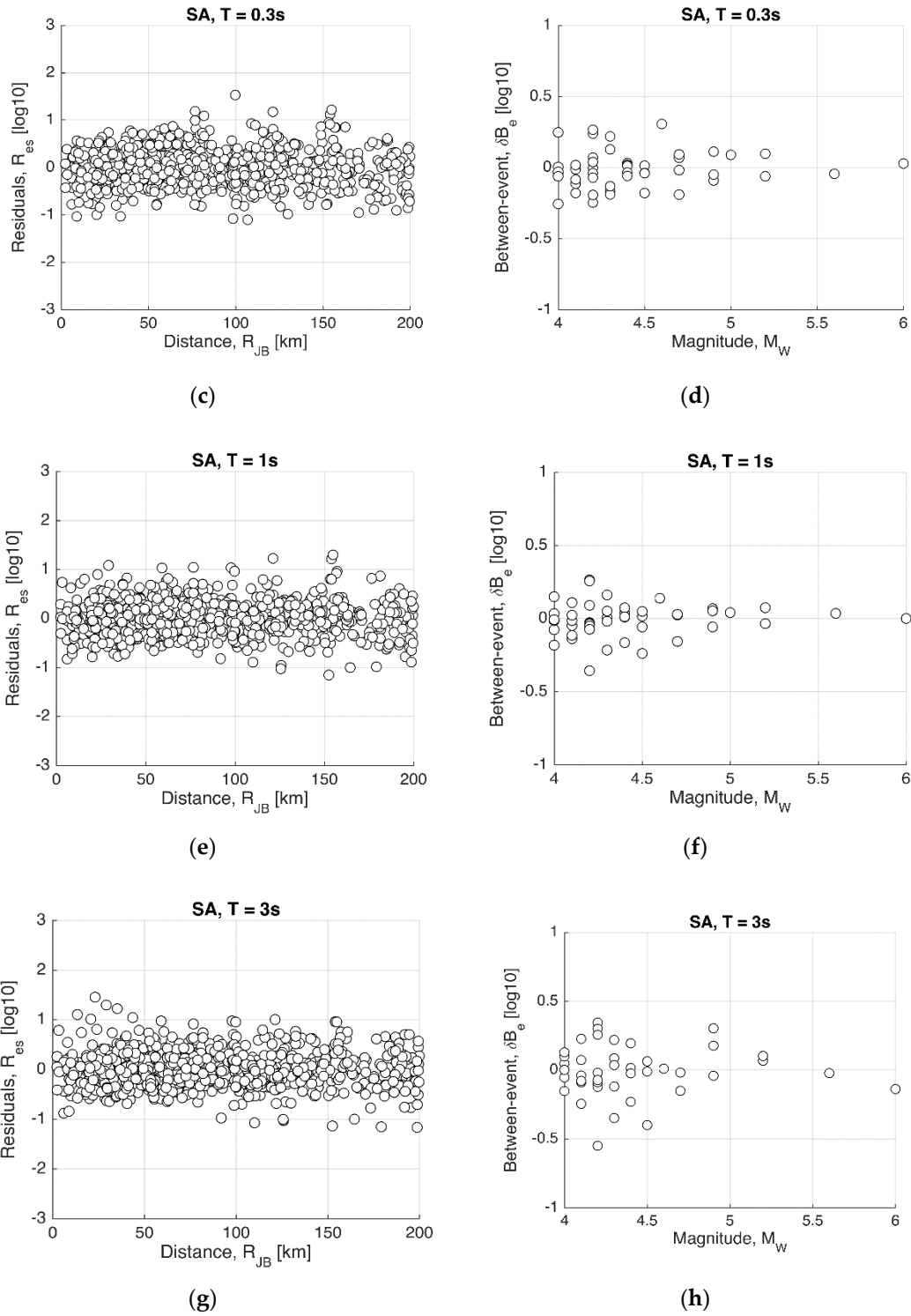


Figure A2. Residuals of SI17ref of PGA, SA-0.3s, 1s and 3s: (a,c,e,g) total residuals as a function of distance; (b,d,f,h) between-event residuals as a function of magnitude.

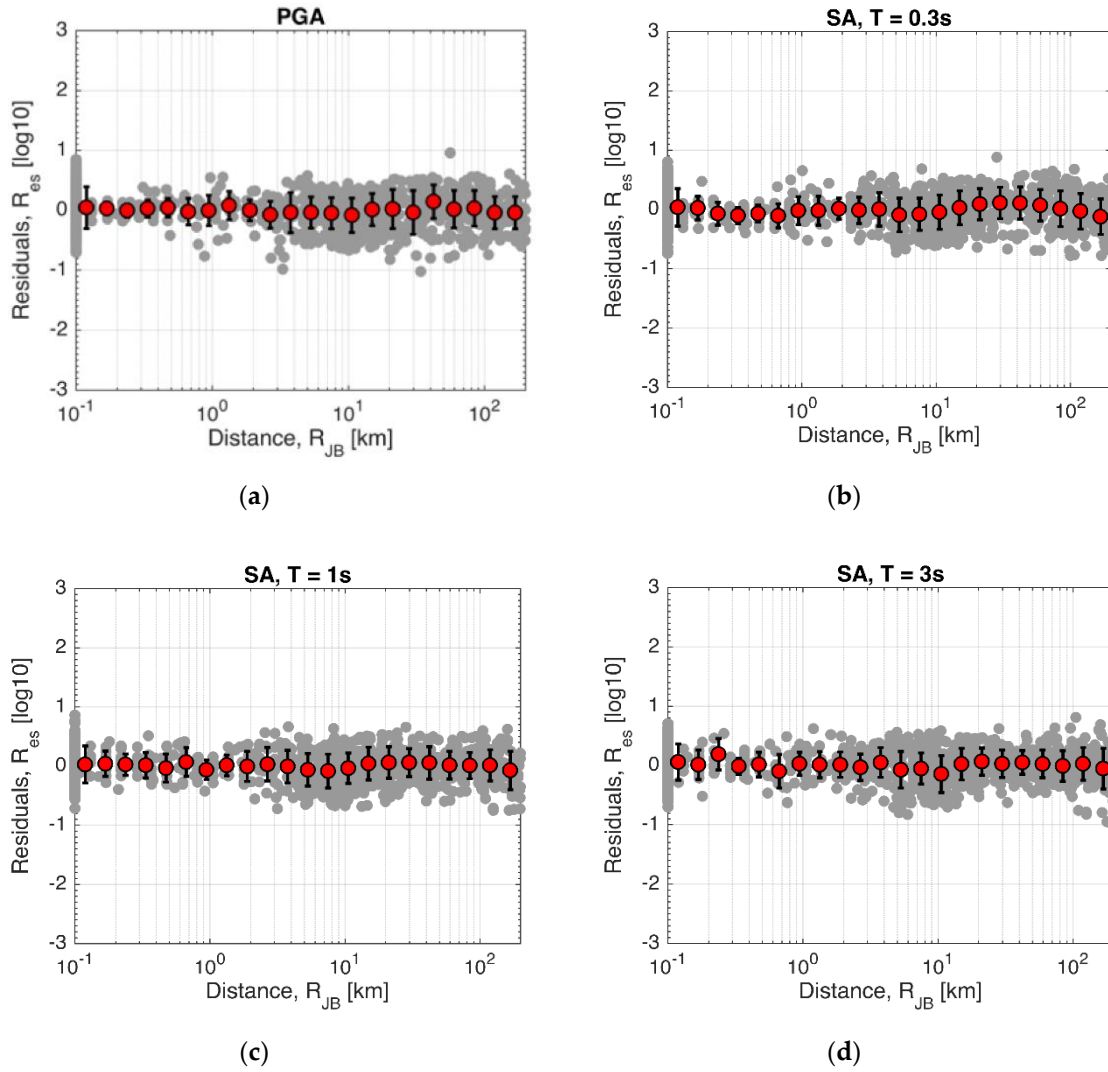


Figure A3. Total residuals of SET1 for SII7hyb calibration as a function of distance: (a) PGA; (b) SA-T=0.3s; (c) SA-T=1s; (d) SA-T=3s.