

Article

# Polyamine-Rich Diet Elevates Blood Spermine Levels and Inhibits Pro-Inflammatory Status: An Interventional Study

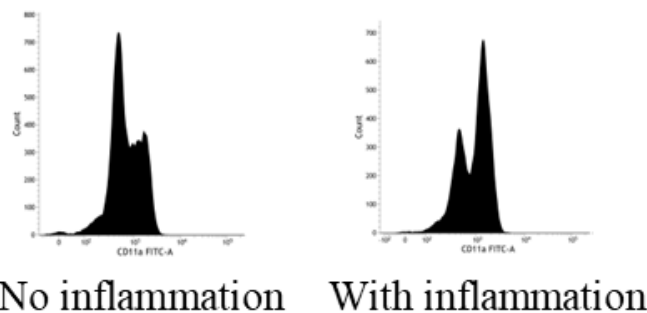
Kuniyasu Soda <sup>1,\*</sup>, Takeshi Uemura <sup>2</sup>, Hidenori Sanayama <sup>1</sup>, Kazuei Igarashi <sup>2,3</sup> and Taro Fukui <sup>1</sup>

<sup>1</sup> Department Cardiovascular Institute for Medical Research, Saitama Medical Center, Jichi Medical University, 1-847, Amanuma, Saitama-city, Saitama 330-0834, Japan; sanayama@jichi.ac.jp (H.S.); d1423@jichi.ac.jp (T.F.)

<sup>2</sup> Amine Pharma Research Institute, Innovation Plaza at Chiba University, 1-8-15 Inohana, Chuo-ku, Chiba, 260-0856, Japan; uemura@amine-pharma.com (T.U.); iga16077@faculty.chiba-u.jp (K.I.)

<sup>3</sup> Graduate School of Pharmaceutical Sciences, Chiba University, 1-8-1 Inohana, Chuo-ku, Chiba 260-8675, Japan

\* Correspondence: soda@jichi.ac.jp; Tel.: +81-48-647-2111



**Figure S1.** Histogram of CD11a expressions on PBMCs obtained in a normal (**left**) and febrile state (**right**) of the same volunteer.