

Supplementary Materials: Identification of Fungal Community Associated with Deterioration of Optical Observation Instruments of Museums in Northern Vietnam

Cao Cuong Ngo ^{1,2,†}, Quang Huy Nguyen ^{3,†}, Thu Hoai Nguyen ², Ngoc Tung Quach ^{1,4}, Pravin Dudhagara ⁵, Thi Hanh Nguyen Vu ^{1,4}, Thi Thanh Xuan Le ¹, Thi Thu Hang Le ³, Thi Thu Hong Do ², Van Duc Nguyen ⁶, Nam Trung Nguyen ^{1,4} and Quyet-Tien Phi ^{1,4,*}

Table S1. Effect of mycelium growing on glass plates after a 28-days by alcohol-bleached test as per ISO 9022-11 on light transmission at wavelengths of visible light range from 400 nm to 800 nm

Measurement wavelength (nm)	Transmission coefficient (%)								
	Control	<i>Humicola insolens</i> BMLC5-5	<i>Aspergillus ochraceopetaliformis</i> BMLC1-2	<i>Penicillium oxalicum</i> BTBB2-2	<i>Byssoschlamys spectabilis</i> BXMA1-2	<i>Torulomyces trachyspermus</i> BTBB1-3	<i>Aspergillus niger</i> BXMA5-2	<i>Penicillium ra-musculum</i> BXMA4-2	<i>Curvularia veruculosa</i> BXMA2-2
400	100±0	84.5±0.4	72.6±0.3	79.0±0.4	97.2±0.7	86.8±0.7	79.0±0.2	70.5±0.1	88.7±0.1
450	99.9±0	91.1±0.5	79.4±0.5	80.7±0.6	99.0±0.5	95.6±0.7	86.9±0.5	78.5±0.4	89.4±0.3
500	100±0	92.3±0.5	81.6±0.4	80.8±0.4	100±0	95.8±0.5	88.6±0.9	81.4±0.9	89.9±0.3
550	100±0	92.5±0.3	82.8±0.4	80.7±0.3	100±0	96.7±0.3	89.7±0.3	82.8±0.7	90.5±0.1
600	100±0	93.4±0.3	83.1±0.8	80.9±0.7	99.8±0.2	97.1±0.3	91.0±0.6	83.5±0.5	91.0±0.9
650	100±0	94.0±0.7	84.0±0.6	80.5±0.9	100±0	97.5±0.5	92.3±0.4	84.5±0.6	91.7±0.2
700	100±0	94.8±0.6	84.3±0.5	80.5±0.2	100±0	97.7±0.9	92.7±0.3	83.5±0.7	91.2±0.8
750	99.9±0.1	95.5±0.5	85.5±0.4	79.9±0.6	99.9±0.1	98.7±0.3	93.4±0.3	84.9±0.8	92.6±0.6
800	99.8±0.1	96.7±0.6	86.2±0.5	80.9±0.7	99.2±0.6	100±0	94.7±0.1	84.9±0.3	93.4±0.8
Average	99.96	92.76	82.17	80.43	99.46	96.21	89.81	81.61	90.93

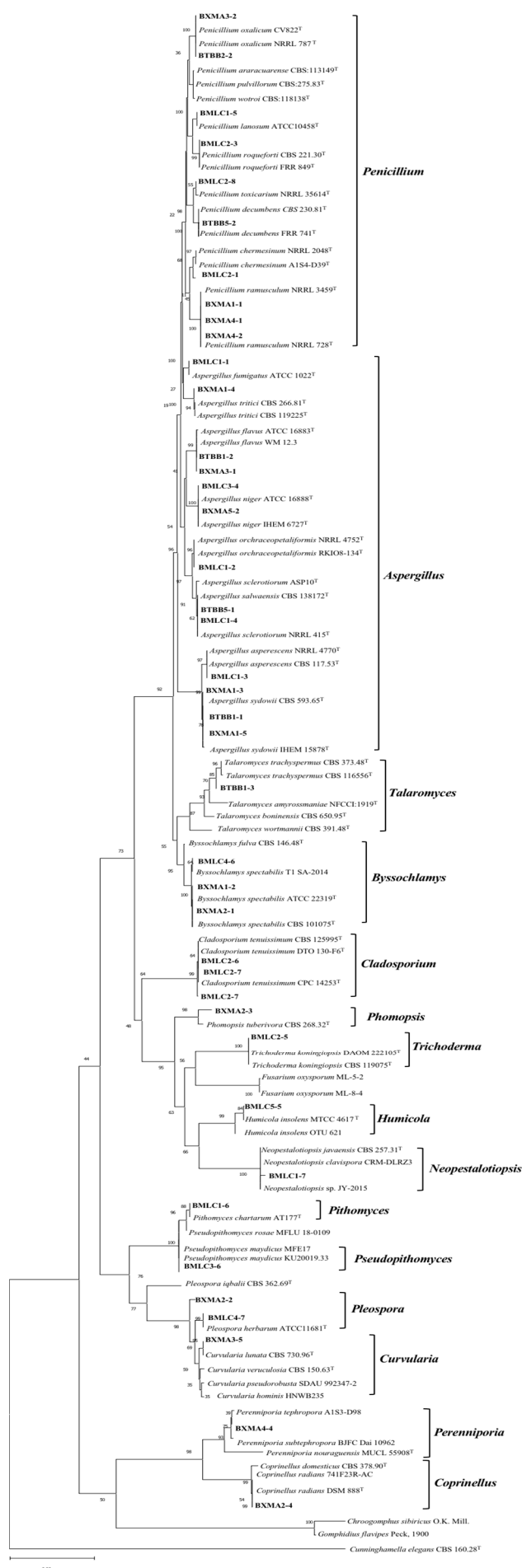


Figure S1. Clustering tree from the maximum likelihood analysis of all fungi isolated from binocular eyepieces using ITS sequences. *Cunninghamella elegans* CBS 160.28^T was selected as the outgroup taxon and 100 % bootstrap values indicate the relevant internode. Identified strains are indicated in bold.