

Supplementary information

Number of Figures: 4

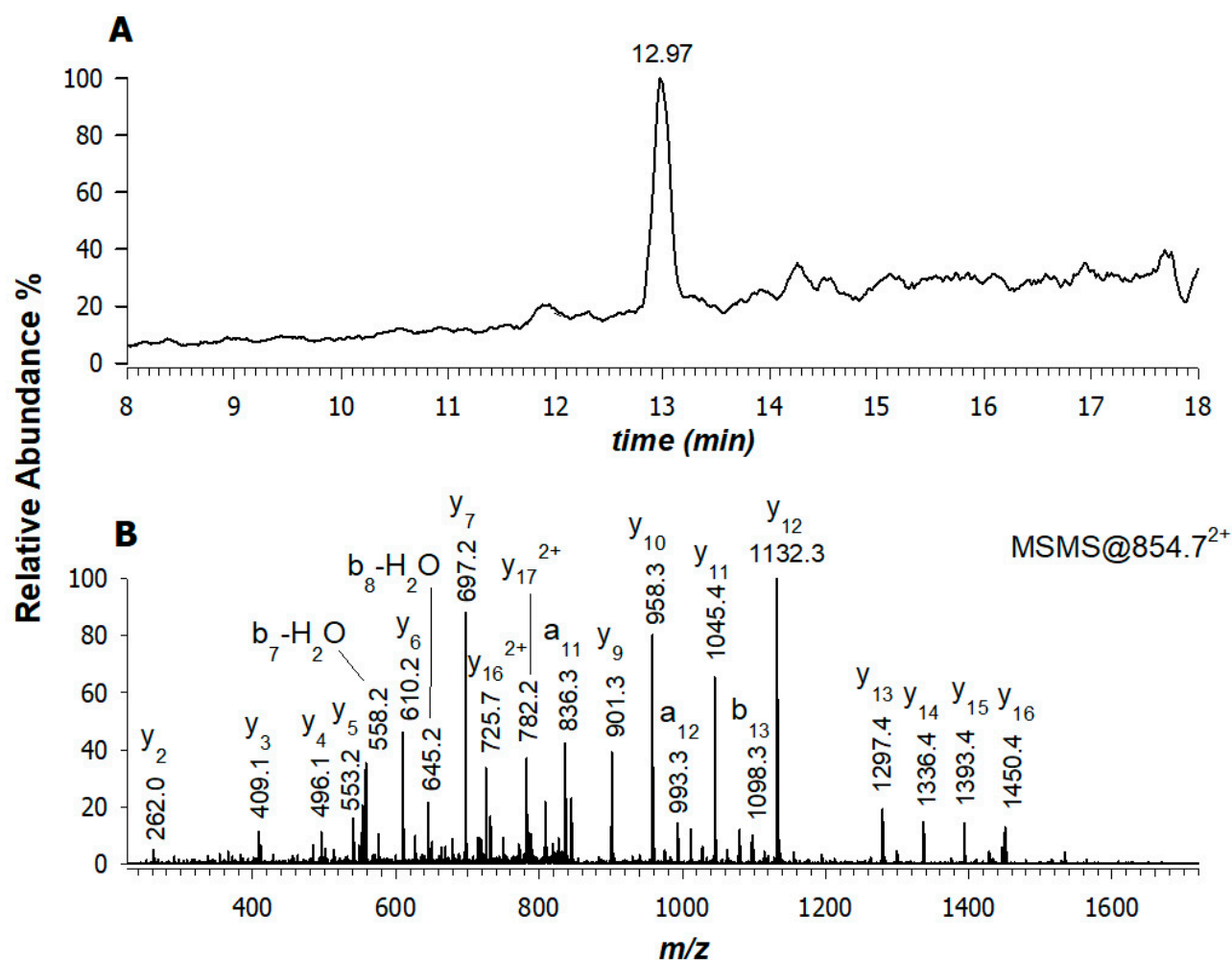


Figure S1. (A) eXtracted Ion Current chromatogram (XIC) of the ion at m/z 854.7²⁺ retrieved in angel's blue wing. (B) RPLC-ESI-CID-MS/MS spectrum of the same ion corresponding to the sequence GSIGGGFSSGGFSGGSFSR (experimental monocharged m/z 1707.7) and belonging to Keratin type I cytoskeletal 10 from Homo sapiens, 88.4% matched intensity.

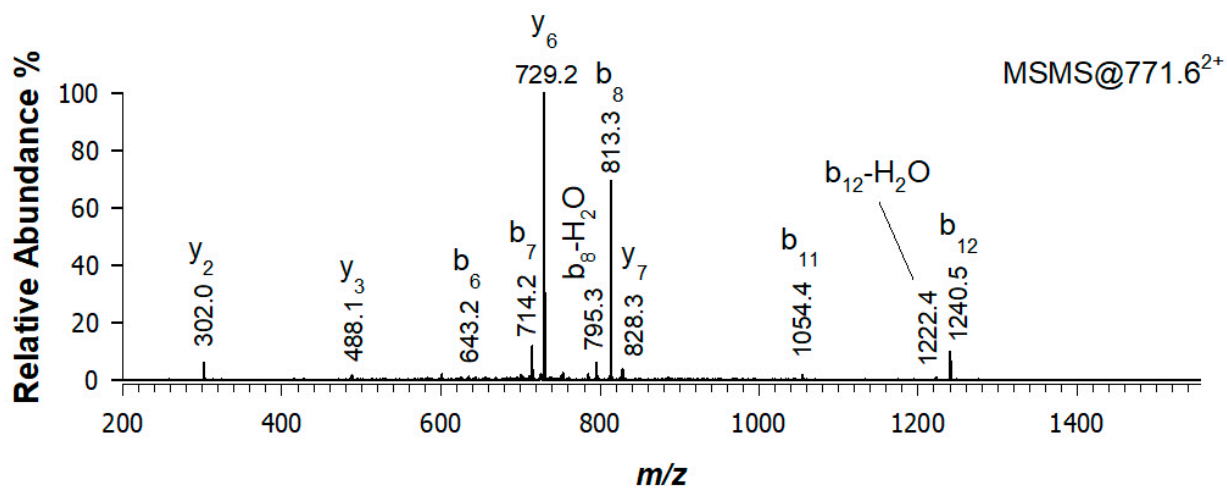


Figure S2. RPLC-ESI-CID-MS/MS spectrum of the ion at m/z 771.6²⁺ retrieved in angel's blue wing, corresponding to the sequence IVN(deamidated)GEEAVPGSWPW (experimental monocharged m/z 1541.6) and belonging to Chymotrypsinogen A from *Bos taurus*, 94.0% matched intensity.

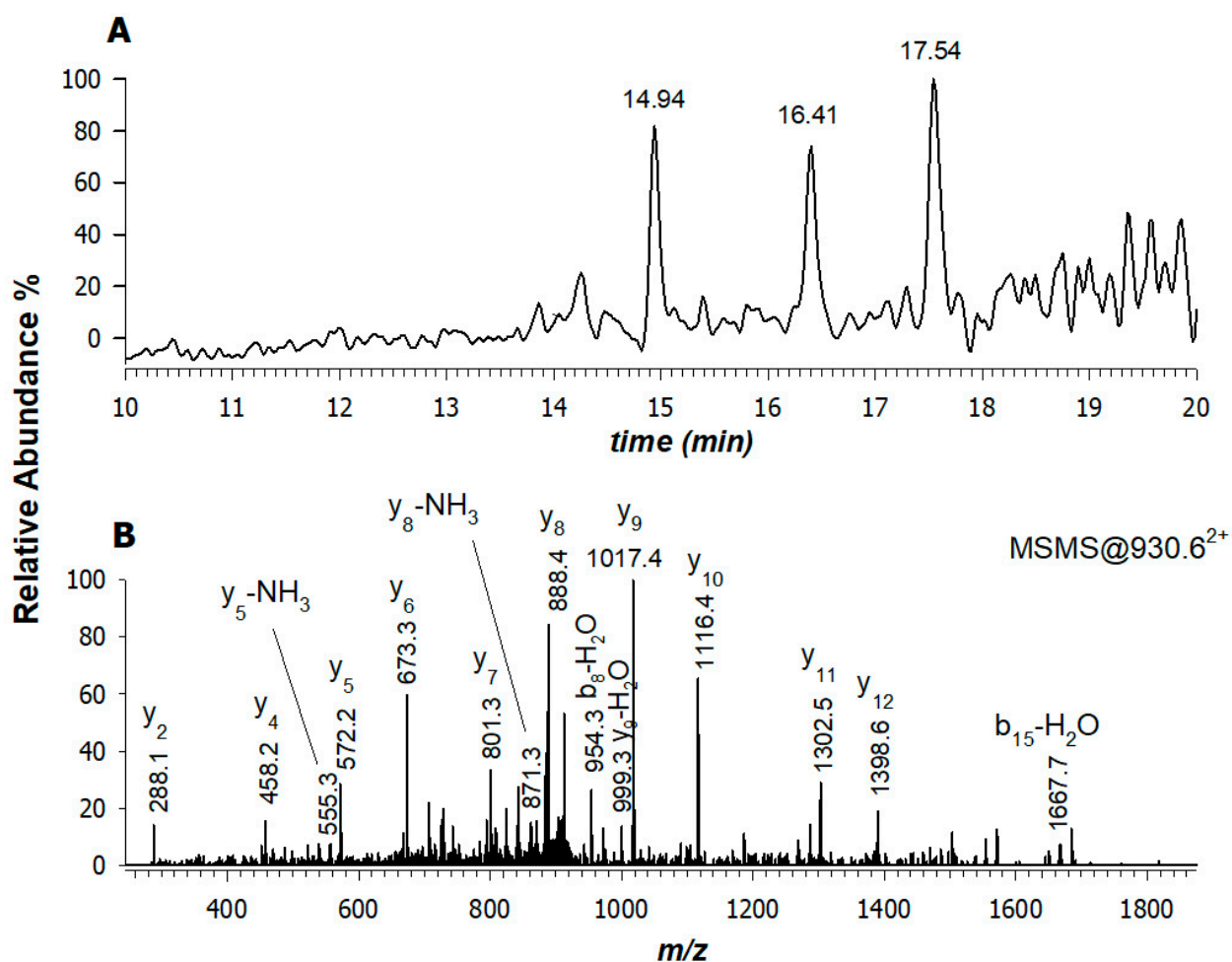


Figure S3. (A) eXtracted Ion Current chromatogram (XIC) of the ion at m/z 930.6²⁺ (retention time 14.94 min) retrieved in angel's blue wing. (B) RPLC-ESI-CID-MS/MS spectrum of the same ion corresponding to the sequence ELIN(deamidated)SWVESQTNGIIR (experimental monocharged m/z 1859.8) and belonging to Ovalbumin from Gallus gallus, 60.0% matched intensity.

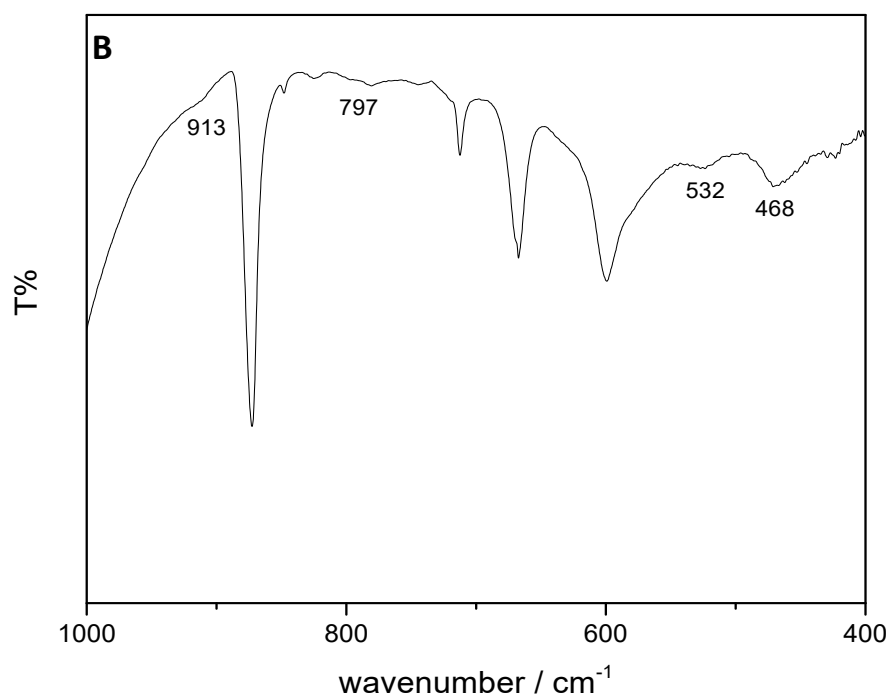
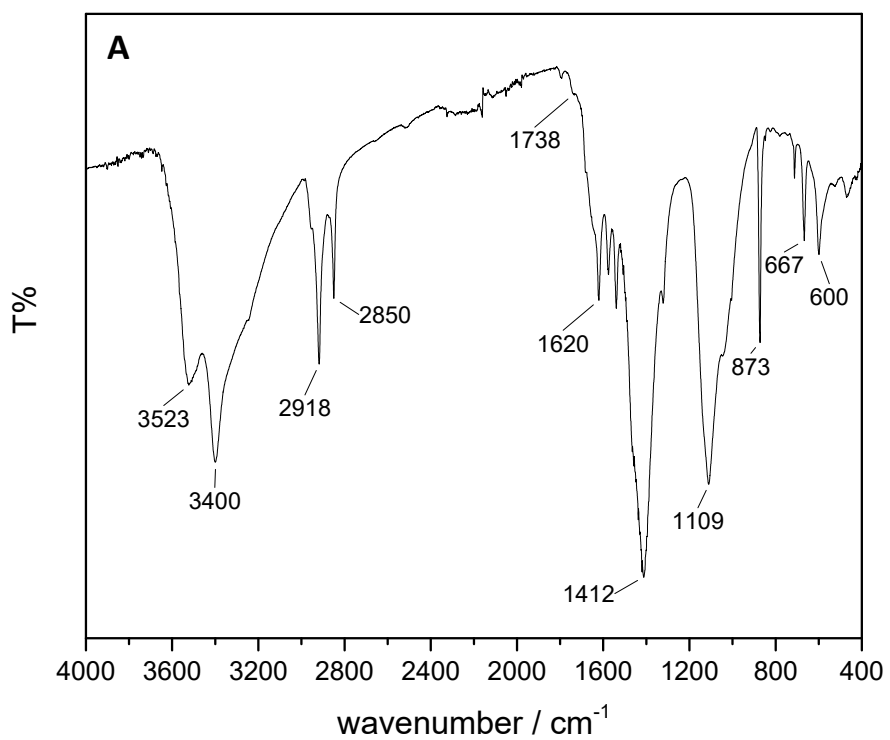


Figure S4. (A) ATR-FTIR spectrum of sample taken from the sampled point 4 (lying lamb). Main signals are indicated. (B) Zoom of the IR region, diagnostic for signals of yellow ochre. Peaks compatible with the presence of yellow ochre are labelled.