

# Screening of the Honey Aroma as a Potential Essence for the Aromachology

Jana Štefániková <sup>1</sup>, Patrícia Martišová <sup>1,\*</sup>, Marek Šnirc <sup>2</sup>, Peter Šedík, <sup>3,\*</sup> and Vladimír Vietoris <sup>4</sup>

- <sup>1</sup> AgroBioTech Research Centre, Slovak University of Agriculture in Nitra, Tr. A. Hlinku 2, 94976 Nitra, Slovakia; jana.stefanikova@uniag.sk
- <sup>2</sup> Department of Chemistry, Faculty of Biotechnology and Food Sciences, Slovak University of Agriculture, Trieda A. Hlinku 2, 94976 Nitra, Slovakia; marek.snirc@uniag.sk
- <sup>3</sup> Center for Research and Educational Projects, Faculty of Economics and Management, Slovak University of Agriculture in Nitra, Tr. A. Hlinku 2, 94976 Nitra, Slovakia
- <sup>4</sup> Department of Technology and Quality of Plant Products, Faculty of Biotechnology and Food Sciences, Slovak University of Agriculture, Trieda A. Hlinku 2, 94976 Nitra, Slovakia; vladimir.vietoris@uniag.sk
- \* Correspondence: patricia.martisova@uniag.sk (P.M.); sedik.peter@gmail.com (P.Š.)

Table S1. Content of VOCs in four kinds of honey samples determined by HS-SPME GC-MS.

Compound		Agat																				Sunflower	18	16	17	19	20
		Honey	Linden	15	11	12	13	14	Honeydew	1	2	3	4	5	6	7	8	9	10								
3-methyl-1-Pentanol	Area Sum %	5.14				5.14																					
	Area Sum %	4.11				4.11																					
	Area Sum %	4.45				4.45																					
	(-)-Myrtenol	Area Sum %																			1.85		1.85				
		Area Sum %																			1.31		1.31				
		Area Sum %																			1.23		1.23				
	1-(2-furanyl)-Ethanone	Area Sum %						0.52		0.16	0.55	0.52	0.85	0.93		0.93											
		Area Sum %						0.81		0.15	1.20	1.06	0.83	0.83		0.83											
		Area Sum %						0.72		0.15	0.87	0.32	1.52	1.86		1.86											
1,3,8-p-Menthatriene	Area Sum %	1.08	1.11	1.58	0.79	0.83	0.56	0.57		0.43	0.49	0.76	0.39	0.2		0.58			0.84	0.95	0.33	0.75	1.04	0.95			
	Area Sum %	1.08	1.00	1.72	0.6	0.86	0.43	0.52		0.25	0.3	0.65	0.35	0.35		0.34			0.46	0.58	0.3	0.36	0.62	0.62	0.49		
	Area Sum %	1.01	1.08	1.71	0.56	0.70	0.44	0.58		0.34	0.23	0.62	0.47	0.44		0.49			0.50	0.45	0.31	0.59	0.7	0.7	0.44		

1-Hexanol	Area Sum %											0.38											0.38											0.36											0.36
	Area Sum %											1.20											1.20											1.56											1.56
	Area Sum %											0.9											0.9											1.28											1.28
1-Nonanol	Area Sum %	2.12	1.19	3.04											3.53	3.61	3.44																												
	Area Sum %	1.54	1.07	2											2.77	3.57	1.97																												
	Area Sum %	1.37	0.92	1.82											2.70	3.52	1.88																												
1-Octen-3-ol	Area Sum %											0.82											0.82																						
	Area Sum %											1.10											1.10																						
	Area Sum %											0.67											0.67																						
2-(para-anisyl) ethanol	Area Sum %	0.76											0.76											0.73	0.73																				
	Area Sum %	0.66											0.66											0.82	0.82																				
	Area Sum %	0.76											0.76											0.85	0.85																				
2,3-Butanediol	Area Sum %											0.61											0.61																						
	Area Sum %											0.7											0.7																						
	Area Sum %											0.77											0.77																						
2,4-Dimethylphenethyl alcohol	Area Sum %	0.74											0.74											1.50	1.50																				
	Area Sum %	0.64											0.64											1.41	1.41																				
	Area Sum %	0.79											0.79											1.25	1.25																				
2,4-Di-tert-butylphenol	Area Sum %	2.17	1.95	1	2.45	2.17	3.30	1.63	0.69	0.82	2.60	2.73	1.31	2.34	3.71	1.04	2.68	2.76	1.51	3.85	4.43	3.92	4.79	2.25																					
	Area Sum %	1.66	1.22	0.95	2.51	1.57	2.05	1.29	0.85	0.63	2.26	1.59	1.10	1.73	3.71	0.62	2.04	1.29	1.01	2.64	2.88	3.14	2.82	1.71																					
	Area Sum %	1.79	1.40	0.94	2.72	1.66	2.22	1.24	0.72	0.52	2.32	1.70	0.95	1.87	2.85	0.77	3.10	1.55	1.08	2.77	3.07	2.91	3.18	1.91																					
2,4-Thujadiene	Area Sum %											0.47											0.47																						
	Area Sum %											0.41											0.41																						
	Area Sum %											0.37											0.37																						
2,5-Furandicarboxaldehyde	Area Sum %	0.32	0.32																					1.31	1.80		1.60		0.54																
	Area Sum %	0.34	0.34																					1.18	1.60		1.44		0.51																
	Area Sum %	0.51	0.51																					1.30	2.08		1.29		0.52																
2,6,10-Trimethyltridecane	Area Sum %																					0.67	0.67																						
	Area Sum %																					0.43	0.43																						
	Area Sum %																					0.34	0.34																						

2-Bornene	Area Sum %															0.90	0.57	1.18			0.57	1.27		
	Area Sum %															0.52	0.43	0.72			0.46	0.47		
	Area Sum %															0.36	0.32	0.54			0.27	0.31		
2-ethyl-1-Hexanol	Area Sum %	0.74	0.9			0.58	1.39			0.65	1.97	1.55	3.12	3.80	2.54	2.49	4.89	1.90	2.79	2.57	3.49	2.59	1.58	3.70
	Area Sum %	0.57	0.65			0.49	0.92			0.55	1.22	0.98	1.71	2.31	1.50	1.30	2.33	1.11	1.62	1.46	2.19	1.39	1.08	1.99
2-Methoxy-4-vinylphenol	Area Sum %	0.68	0.98			0.38	0.66			0.4	0.94	0.64	1.23	1.31	1.09	0.86	1.87	1	1.29	1.34	1.37	1.77	0.64	1.32
	Area Sum %							0.30	0.41	0.18														
	Area Sum %							0.31	0.41	0.2														
	Area Sum %							0.33	0.41	0.24														
2-phenylethyl Acetate	Area Sum %	0.66			0.66																			
	Area Sum %	0.53			0.53																			
2-Propylphenol, methyl ether	Area Sum %	0.47			0.47																			
	Area Sum %							0.63	0.63															
3,5-Dimethyl-2-octanone	Area Sum %							0.49	0.49															
	Area Sum %							0.44	0.44															
	Area Sum %	0.93			0.93																			
	Area Sum %	0.64			0.64																			
3-Carene	Area Sum %			0.55																				
	Area Sum %							0.6	0.6															
	Area Sum %							0.64	0.64															
3-Furanmethanol	Area Sum %							0.42	0.42															
	Area Sum %							0.4	0.4															
	Area Sum %							1.02	1.02															
3-methyl-1-Butanol	Area Sum %							0.95	0.95															
	Area Sum %	2.67			2.87	0.83	4.32	1.81											1.41	1.41				
	Area Sum %	2.52			3.19	0.55	3.81	2.77											1.58	1.58				
3-methyl-1-Pentanal	Area Sum %	2.04			3.16	1.65	1.32	2.66											2.66	1.44				
	Area Sum %	0.52			0.52																			
	Area Sum %	2.16			2.16																			
	Area Sum %	0.54			0.54																			

3-methyl-1-Pentanol	Area Sum %				0.44					
	Area Sum %	0.67			0.67					
	Area Sum %	0.67			0.67					
3-methyl-2-Butenal	Area Sum %							0.96		0.96
	Area Sum %							0.78		0.78
	Area Sum %							0.83		0.83
3-methyl-2-Heptanone	Area Sum %	0.72		0.72		0.69	0.69			
	Area Sum %	0.52		0.52		0.59	0.59			
	Area Sum %	0.39		0.39		0.51	0.51			
3-Methyl-4-isopropylphenol	Area Sum %	1.25		1.25		0.67		0.67		
	Area Sum %	1.10		1.10		0.5		0.5		
	Area Sum %	1.17		1.17		0.54		0.54		
3-methyl-Butanal	Area Sum %					0.97		0.97		
	Area Sum %					0.92		0.92		
	Area Sum %					0.93		0.93		
3-methyl-Pentanal	Area Sum %	0.6	0.6	0.6					0.45	0.45
	Area Sum %	0.49	0.5	0.47					0.77	0.77
	Area Sum %	0.54	0.61	0.47					0.57	0.57
3-methyl-Pentanoic acid	Area Sum %	1.57	1.57							
	Area Sum %	0.83	0.83							
	Area Sum %	1.07	1.07							
4-(1-methylethyl)-Benzaldehyde	Area Sum %					0.23		0.23		
	Area Sum %					0.24		0.24		
	Area Sum %					0.23		0.23		
4,4-Dimethyl-3-oxopentanenitrile	Area Sum %	4.43	4.43							
	Area Sum %	3.12	3.12							
	Area Sum %	3.73	3.73							
4,7-dimethyl-4,4a,5,6-tetrahydro-Cyclopenta[c]pyran-1,3-dione	Area Sum %	0.78	1.25	0.31		1.77	1.77			

5,6-dimethylene-Cyclooctene	Area Sum %	0.94	1.45	0.42		2.08	2.08																	
	Area Sum %	0.96	1.45	0.46		2.11	2.11																	
	Area Sum %							0.42					0.42											
	Area Sum %							0.42					0.42											
7-exo-ethenyl-Bicyclo[4.2.0]oct-1-ene	Area Sum %							0.42					0.42											
	Area Sum %	0.78	0.78																					
	Area Sum %	0.89	0.89																					
Acetaldehyde, (3,3-dimethylcyclohexylidene)-, (E)-	Area Sum %	0.89	0.89																					
	Area Sum %	0.78		0.54	1.01		2.62	2.62																
	Area Sum %	0.56		0.42	0.69		2.28	2.28																
Acetic acid	Area Sum %	0.43		0.35	0.51		2.22	2.22																
	Area Sum %						3.34	0.88	5.75	3.18	3.54	1.82					1.82							
	Area Sum %						4.16	0.95	4.53	8.10	3.04	1.82					1.82							
Acetophenone	Area Sum %						4.68	1.04	5.46	7.30	4.93	2.59					2.59							
	Area Sum %	0.34			0.34																			
	Area Sum %	0.48			0.48																			
alpha-Terpinene	Area Sum %	0.3			0.3																			
	Area Sum %						0.63	0.63																
	Area Sum %						0.54	0.54																
alpha-Terpineol	Area Sum %						0.55	0.55																
	Area Sum %	1.20	1.2				1.83	1.50	1.68	2.32	1.41					2.19	0.84	0.96	1.66					
	Area Sum %	1.18	1.18				1.53	1.50	1.26	1.83	1.11					1.71	0.65	0.65	1.42					
Benzaldehyde	Area Sum %	1.16	1.16				1.51	1.29	1.45	1.78	1.00					1.47	0.47	0.77	1.30					
	Area Sum %	2.88	9.48	0.64	0.29	1.10	5.88	0.44	11.76	0.76	9.64	6.79	6.05	6.05	7.94	4.08	6.88	5.32	1.47	1.44	1.24	2.05	1.81	0.82
	Area Sum %	2.33	7.35	0.52	0.45	1.01	5.28	0.41	10.25	1.04	8.37	6.34	4.83	5.11	6.40	3.26	4.54	4.86	1.43	1.36	1.30	2.07	1.77	0.64
Benzeneacetaldehyde	Area Sum %	2.62	8.40	0.83	0.30	0.93	4.99	0.47	8.93	1.05	8.50	5.98	5.38	4.60	6.36	3.02	6.29	6.64	1.42	1.68	0.97	2.06	1.79	0.59
	Area Sum %	0.24	0.24				2.06		2.23	0.78	0.61	4.60	0.73	0.9	0.42	0.67	1.09	0.55	0.51	0.35	0.42	0.69	0.56	0.54
	Area Sum %	0.27	0.27				1.98		2.54	1.03	0.49	3.86	0.51	0.57	0.27	0.58	0.69	0.45	0.5	0.4	0.48	0.39	0.55	0.68
	Area Sum %	0.21	0.21				1.93		2.38	1.02	0.68	3.65	0.59	0.58	0.36	0.57	0.54	0.92	0.48	0.42	0.41	0.77	0.47	0.35

Benzyl alcohol	Area Sum %	0.22		0.22	1.43	3.75	0.8	0.53	0.63	0.77	0.58	1.19	0.54	0.90	1.21	0.83	0.67
	Area Sum %	0.3		0.3	1.33	3.81	0.82	0.35	0.32	0.51	0.41	0.89	0.24	0.76	1.18	0.43	0.67
	Area Sum %	0.32		0.32	1.21	3.41	0.71	0.4	0.32	0.45	0.59	0.42	0.33	0.72	1.07	0.5	0.58
beta-Myrcene	Area Sum %				1.13		1.13										
	Area Sum %				0.97		0.97										
	Area Sum %				0.66		0.66										
beta-Phellandrene	Area Sum %				0.48	0.48											
	Area Sum %				0.43	0.43											
	Area Sum %				0.43	0.43											
Bicyclo[4.2.0]oct-1-ene, 7-exo-ethenyl-	Area Sum %	0.34															
	Area Sum %	0.44															
	Area Sum %	0.38															
Carveol	Area Sum %				0.77	0.77											
	Area Sum %				0.76	0.76											
	Area Sum %				0.79	0.79											
Cosmene	Area Sum %				0.72	0.72											
	Area Sum %				0.88	0.88											
	Area Sum %				0.92	0.92											
Cyclofenchene	Area Sum %													1.05	1.62	0.76	0.47
	Area Sum %													0.91	1.38	0.87	0.64
	Area Sum %													0.87	1.18	1.03	0.66
Cyclohexane, 1,2,4-tris(methylene)-	Area Sum %	0.58	0.58		0.6	0.6											
	Area Sum %	0.53	0.53		0.6	0.6											
	Area Sum %	0.38	0.38		0.59	0.59											
Decanal	Area Sum %	0.84	0.84		2.22		0.54	4.62	1.51	2.78	2.51	2.51	3.46	2.26	3.18	2.41	2.35
	Area Sum %	0.5	0.5		1.49		0.33	2.94	1.20	1.25	1.18	1.29	1.43	0.95	1.38	1.43	1.70
	Area Sum %	0.38	0.38		1.21		0.53	2.39	0.71	0.84	0.72	1.46	0.6	0.55	0.88	0.92	0.92
dimethyl Disulfide	Area Sum %	0.83	0.83		0.89				0.89								
	Area Sum %	0.85	0.85		0.87				0.87								
	Area Sum %	0.85	0.85		0.51				0.51								

			18.8		28.3			
Dimethyl ether	Area Sum %	17.38	4	4.96	5	3.27		
			32.0		29.9			
	Area Sum %	20.91	1	0.73	8	4.46		
			15.0		35.5			
	Area Sum %	18.68	4	5.45	5	13.45		
Dimethyl sulfide	Area Sum %	3.32						
	Area Sum %	5.83						
	Area Sum %	6.94						
D-Limonene	Area Sum %					2.13		
	Area Sum %					1.63		
	Area Sum %					1.25		
Dodecane	Area Sum %					2.35		
	Area Sum %					1.99		
	Area Sum %					1.63		
endo-Borneol	Area Sum %	0.87	1.04	0.64	0.94	1.41		
	Area Sum %	0.77	1.11	0.47	0.74	1.23		
	Area Sum %	0.72	0.92	0.54	0.69	1.26		
ethyl 4-isopropylbenzoate	Area Sum %	0.6		0.6				
	Area Sum %	0.39		0.39				
	Area Sum %	0.29		0.29				
Ethyl Acetate	Area Sum %	4.14		4.14				
	Area Sum %	12.2		12.2				
	Area Sum %	10		10				
ethyl Benzeneacetate	Area Sum %	0.97			0.47	1.46		
	Area Sum %	0.72			0.46	0.98		
	Area Sum %	0.57			0.37	0.77		
ethyl Benzeneacetate	Area Sum %	1.66		1.66				
	Area Sum %	0.98		0.98				
	Area Sum %	0.89		0.89				
ethyl Benzenepropanoate	Area Sum %	0.47		0.47				
	Area Sum %	0.32		0.32				

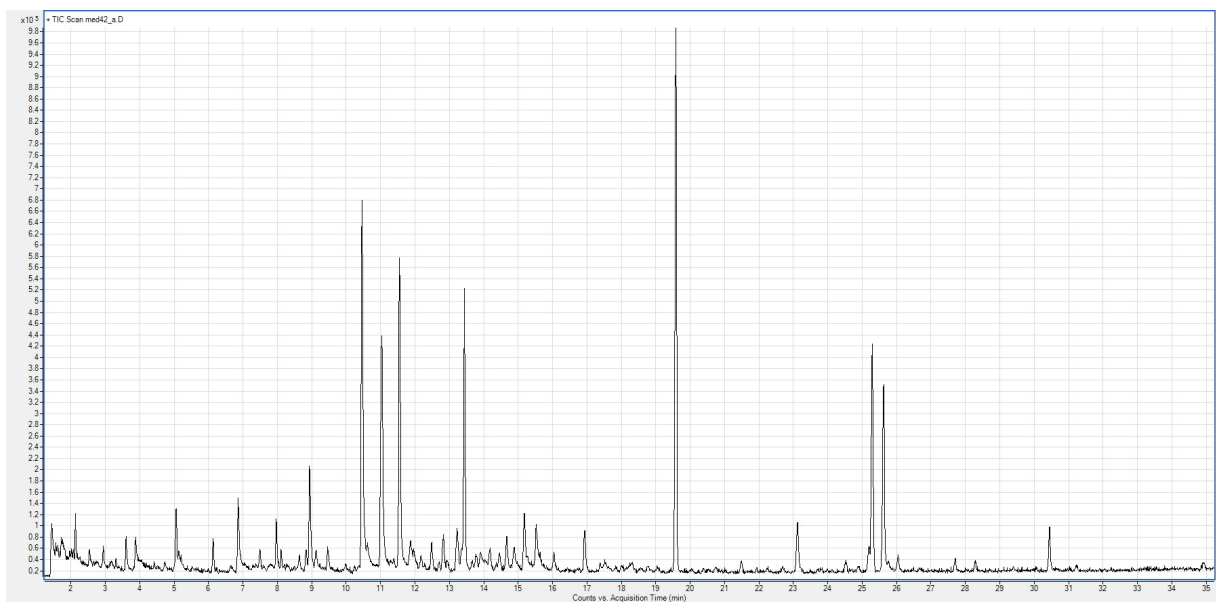
ethyl Benzoate	Area Sum %	0.45																			0.45											10.9																										
	Area Sum %	6.8																			2.64											5																										
	Area Sum %	4.25																			1.55											6.95																										
	Area Sum %	3.03																			1.08											4.98																										
ethyl citronellate	Area Sum %	5.69																			5.69																																					
	Area Sum %	4.88																			4.88																																					
	Area Sum %	4.94																			4.94																																					
ethyl Decanoate	Area Sum %	0.76																			0.76																																					
	Area Sum %	0.61																			0.61																																					
	Area Sum %	0.29																			0.29																																					
ethyl Nonanoate	Area Sum %	1.14																			1.36											0.91																										
	Area Sum %	0.69																			0.95											0.43																										
	Area Sum %	0.57																			0.77											0.37																										
Furfural	Area Sum %	1.11	1.11																			4.36											3.82	1.31	5.93	6.39	2.14	2.21	4.84	2.44	2.64	0.35	1.67	0.46	0.57	3.27	2.75	1.31										
	Area Sum %	0.93	0.93																			4.70											4.36	2.28	6.11	6.04	3.03	2.82	4.79	2.26	1.00	3.66	2.21	0.34	1.92	2.18	5.05	1.54										
	Area Sum %	1.05	1.05																			4.75											5.79	2.38	5.71	5.11	1.28	0.70	2.72	1.22	0.84	1.10	2.18	2.27	2.35	1.89	3.86	0.53										
gamma-Terpinene	Area Sum %	0.56																			0.56	0.87											0.86	0.49											1.26											0.37	0.34	0.39
	Area Sum %	0.33																			0.33	0.73											0.74	0.45											1.01											0.32	0.28	0.35
	Area Sum %	0.49																			0.49	0.73											0.69	0.34											1.17											0.33	0.3	0.36
Hotrienol	Area Sum %	12.93	2.10	48.88	3.26	9.03	1.38	7.13											1.69	8.30	9.05	7.38	9.21	6.50	7.83	4.79	5.30	6.31	8.26	5.77	3.52				7.24				6.55																			
	Area Sum %	12.77	1.33	50.43	2.72	8.09	1.27	5.23											1.68	7.24	6.08	4.25	6.91	3.61	5.23	2.92	3.01	2.93	3.98	3.86	2.29				5.25				4.05																			
	Area Sum %	12.83	1.22	50.11	3.14	8.30	1.39	4.66											1.79	6.55	5.63	3.64	5.70	2.78	4.13	2.21	2.10	2.25	3.22	3.14	1.87				4.07				3.47																			
Lilac aldehyde B	Area Sum %	15.96	6																			1.05											0.77											1.33	2.07	2.93					1.21							
	Area Sum %	11.41	1																			0.95											0.77											1.12	1.41	2.09					0.73							
	Area Sum %	11.86	6																			0.87											0.73											1.01	1.18	1.75					0.61							
Lilac aldehyde D	Area Sum %	7.49	7.49																																																							
	Area Sum %	5.97	5.97																																																							
	Area Sum %	6.33	6.33																																																							
Linalool	Area Sum %	8.35																		13.49										3.21	2.24					2.24																						



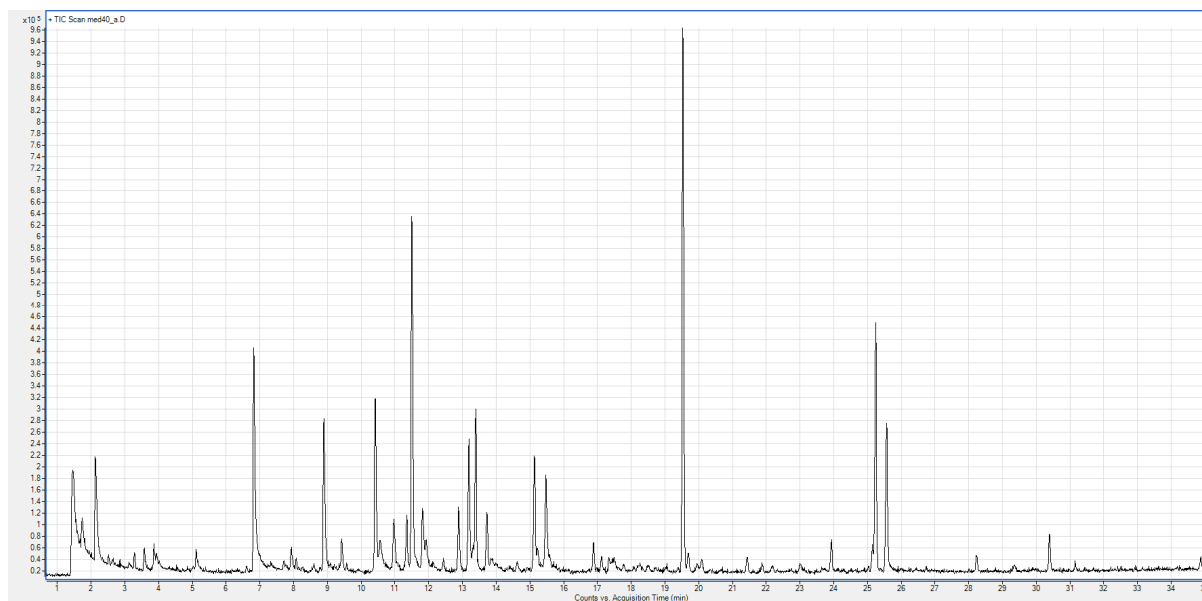
Linalool oxide	Area Sum %				<b>4.96</b>		7.96	1.96	<b>1</b>		1								
	Area Sum %				<b>3.64</b>		5.95	1.33	<b>0.65</b>		0.65								
	Area Sum %								<b>2.39</b>		3.43	1.35							
	Area Sum %								<b>2.03</b>		3.03	1.03							
	Area Sum %								<b>1.92</b>		2.82	1.02							
Linalyl acetate	Area Sum %	<b>0.87</b>	0.87																
	Area Sum %	<b>0.49</b>	0.49																
	Area Sum %	<b>0.33</b>	0.33																
m-Di-tert-butylbenzene	Area Sum %				<b>4.08</b>		4.08		<b>0.64</b>		0.64		<b>0.98</b>	1.13		0.94	0.87		
	Area Sum %				<b>3.44</b>		3.44		<b>0.53</b>		0.53		<b>0.55</b>	0.59		0.59	0.48		
	Area Sum %				<b>3.05</b>		3.05		<b>0.44</b>		0.44		<b>0.56</b>	0.5		0.86	0.33		
methoxy-phenyl-Oxime	Area Sum %				<b>0.91</b>		0.56	1.26	<b>1.16</b>	1.16			<b>1.28</b>			1.52	1.03		
	Area Sum %				<b>1.15</b>		0.74	1.56	<b>2.12</b>	2.12			<b>1.55</b>			2.18	0.92		
	Area Sum %				<b>0.7</b>		1.18	0.22	<b>0.5</b>	0.5			<b>1.58</b>			0.96	2.19		
Methyl salicylate	Area Sum %	<b>0.85</b>		0.85	<b>0.64</b>		0.42	0.73	0.78										
	Area Sum %	<b>0.68</b>		0.68	<b>0.54</b>		0.32	0.68	0.63										
	Area Sum %	<b>0.58</b>		0.58	<b>0.61</b>		0.23	0.79	0.82										
Nerol oxide	Area Sum %	<b>1.09</b>	1.50			0.68													
	Area Sum %	<b>1.13</b>	1.65			0.6													
	Area Sum %	<b>1.09</b>	1.66			0.52													
Nonanoic acid	Area Sum %	<b>1.27</b>	1.27		<b>0.29</b>		0.29		<b>1.02</b>	1.02									
	Area Sum %	<b>0.97</b>	0.97		<b>0.21</b>		0.21		<b>0.91</b>	0.91									
	Area Sum %	<b>1.05</b>	1.05		<b>0.23</b>		0.23		<b>0.83</b>	0.83									
Octanal	Area Sum %				<b>1.35</b>		1.89	0.81	<b>0.81</b>		0.81		<b>0.50</b>			0.54	0.45		
	Area Sum %				<b>1.05</b>		1.62	0.48	<b>0.53</b>		0.53		<b>0.38</b>			0.49	0.26		
	Area Sum %				<b>0.82</b>		1.28	0.36	<b>0.53</b>		0.53		<b>0.38</b>			0.43	0.33		
Octane	Area Sum %	<b>1.22</b>	1.22		<b>0.53</b>		0.38	0.3	0.91	<b>0.92</b>	1.34		1.20	0.22	<b>0.34</b>		0.34		
	Area Sum %	<b>0.59</b>	0.59		<b>0.87</b>		1.01	0.91	0.69	<b>0.84</b>	1.33		0.43	0.76	<b>2.64</b>		2.64		
	Area Sum %	<b>0.82</b>	0.82		<b>0.44</b>		0.83	0.27	0.21	<b>0.79</b>	1.33		0.34	0.69	<b>1.45</b>		1.45		
o-Cymene	Area Sum %	<b>1.02</b>	0.24		2.08	0.74	<b>0.76</b>	1.30	0.35	1	0.4		<b>0.56</b>	0.56	0.25	0.42	0.84	0.73	

p-Cymen-8-ol	Area Sum %	0.74	0.19			1.46	0.57	0.69	1.38	0.38	0.68	0.3							0.45	0.35	0.36	0.25	0.72	0.57	
	Area Sum %	0.74	0.44			1.23	0.55	0.69	1.51	0.27	0.69	0.3							0.41	0.48	0.37	0.4	0.46	0.36	
	Area Sum %	2.91		1.81	2.53	5.08	2.21	1.50	2.68	0.61	1.21								0.55				0.55		
	Area Sum %	2.81		2.11	2.32	4.90	1.90	1.52	3.13	0.42	1.02								0.63				0.63		
	Area Sum %	3.06		2.36	2.70	5.18	1.99	1.71	3.27	0.66	1.20								0.57				0.57		
Phenylethyl Alcohol	Area Sum %	1.23	0.75		1.33	1.69	1.15	1.31	1.15	0.51	2.01		1.56	2.35	1.57	3.41	2.58	2.67	1.54	1.21	1.79	0.35	1.72	1.03	1.16
	Area Sum %	1.12	0.67		1.38	1.64	1.09	1.24	0.93	0.49	1.53		1.99	2.23	2.50	3.18	2.05	2.18	1.22	0.94	1.73	0.41	0.69	0.94	0.91
	Area Sum %	1.15	0.69		1.12	1.53	1.24	1.30	1.08	0.49	1.67		1.97	2.18	2.48	3.28	1.41	2.14	1.60	0.75	0.87	0.39	0.82	0.68	1
p-Mentha-1,5-dien-8-ol	Area Sum %							1.98	1.98																
	Area Sum %							2.44	2.44																
	Area Sum %							2.58	2.58																
Santene	Area Sum %							0.17				0.17													
	Area Sum %							0.44				0.44													
	Area Sum %							0.22				0.22													
Terpinen-7-al	Area Sum %	0.65		0.65				1.94	3.04			0.84													
	Area Sum %	0.58		0.58				1.52	2.49			0.54													
	Area Sum %	0.62		0.62				1.27	2.08			0.45													
Tetradecane	Area Sum %							2.81		2.81															
	Area Sum %							2.31		2.31															
	Area Sum %							2.14		2.14															
Thymol	Area Sum %	0.93		0.91	0.94			1.11	1.04			1.17													
	Area Sum %	0.90		0.94	0.85			0.96	1.20			0.72													
	Area Sum %	0.85		0.83	0.87			0.99	1.15			0.83													
trans-beta-Ocimene	Area Sum %							0.61			0.61														
	Area Sum %							0.58			0.58														
	Area Sum %							0.39			0.39														
trans-Linalool oxide	Area Sum %	1.16	1.28	1.20	0.66	1.50		1.91		1.68	1.80	1.29	2.88	5.14	3.82	5.18	9.18	2.38		5.86	5.61	3.37	8.47	2.97	8.86
	Area Sum %	1.42	1.38	1.58	0.8	1.90		1.95		1.72	1.68	1.17	3.24	5.07	4.85	5.06	8.31	2.05		5.02	5.31	2.28	7.71	3.05	6.77
	Area Sum %	1.72	1.83	2.02	1.10	1.91		2.16		1.81	1.82	1.67	3.35	5.96	5.29	5.57	7	2.90		5.64	5.71	2.24	9.36	2.93	7.98
β-Calarene	Area Sum %																		3.97	3.97					

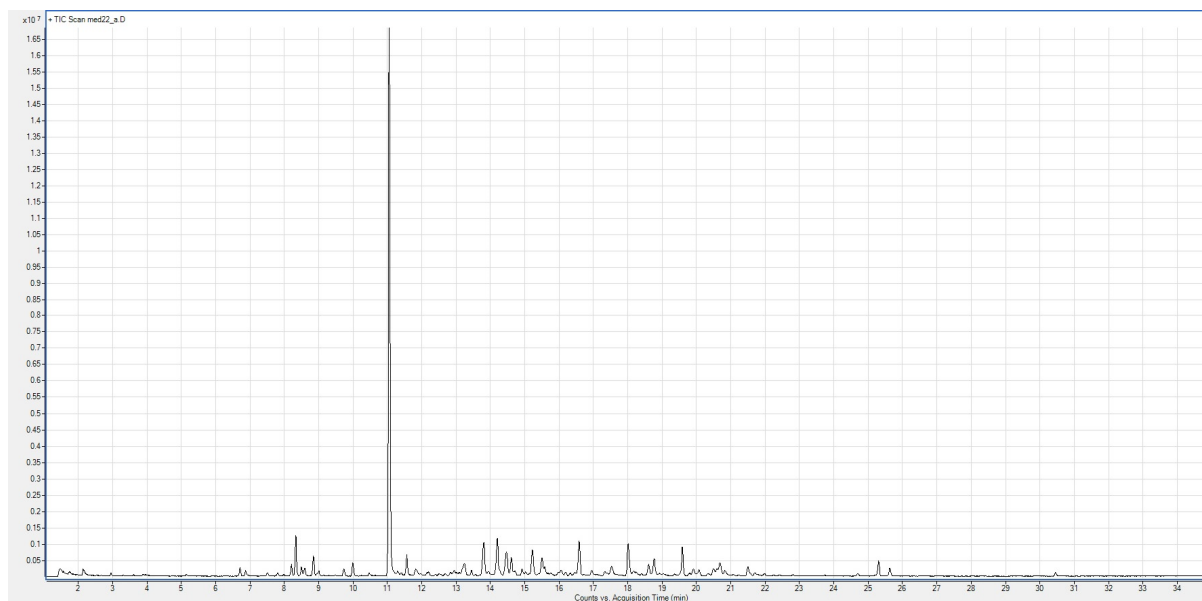
	Area Sum %										2.45	2.45
	Area Sum %										1.84	1.84
β-Damascenone	Area Sum %	1.03	0.87	1.21	1.33	0.71	1.23	0.96	0.52	2.21	0.47	
	Area Sum %	0.71	0.78	0.78	0.8	0.47	0.90	0.96	0.35	1.40	0.29	
	Area Sum %	0.58	0.65	0.61	0.66	0.41	0.72	0.93	0.24	1	0.33	



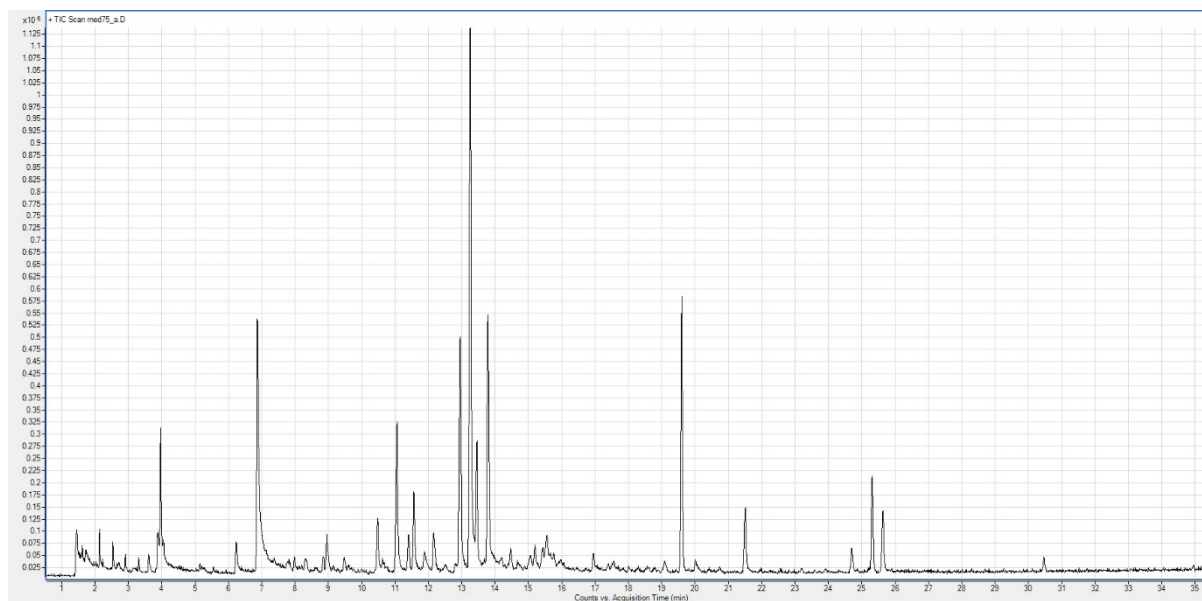
**Figure S1.** Chromatogram of sunflower honey.



**Figure S2.** Chromatogram of acacia honey.



**Figure S3.** Chromatogram of honeydew honey.



**Figure S4.** Chromatogram of linden honey.