

Induction of Apoptosis of Cancer Cells Using the Cisplatin Delivery Based Electrospray (CDES) System

Myung Chul Lee¹, Shambhavi Pandey³, Jaewoon Lim¹, Sang Bae Park¹, Jae Eun Kim², Hyun-mok Son¹, Jinsub Han², Hoon Seonwoo^{4,5***}, Pankaj Garg^{3**} and Jong Hoon Chung^{2,3,6 *}

¹ Affiliation 1; Department of Biosystems & Biomaterial Science and Engineering, Seoul National University, Seoul, 08826, Republic of Korea.; josephmyungchul@gmail.com (M.C.L.); jwlim1130@snu.ac.kr(J.W.L.); sb92park@snu.ac.kr(S.P.); shmking@snu.ac.kr (H.S.)

² Affiliation 2; Department of Biosystems Engineering, Seoul National University, Seoul, 08826, Republic of Korea.; je6740@snu.ac.kr(J.E.K.); rhineop@snu.ac.kr(J.H.) jchung@snu.ac.kr(J.H.C.)

³ Affiliation 3; Research Institute of Agriculture and Life Sciences, Seoul National University, Seoul, Republic of Korea.; shambhavi16@gmail.com(S.P.); pnkjchem@gmail.com(P.G.); jchung@snu.ac.kr (J.H.C.)

⁴ Affiliation 4; Department of Industrial Machinery Engineering, College of Life Science and Natural Resources, Suncheon National University, Suncheon, 57922, Republic of Korea.; uhun906@gmail.com (H.S.)

⁵ Affiliation 5; Interdisciplinary Program in IT-Bio Convergence System, Suncheon National University, Suncheon 57922, Republic of Korea.; uhun906@gmail.com (H.S.)

⁶ BK21 Global Smart Farm Educational Research Center, Seoul National University, Seoul 08826, Korea; jchung@snu.ac.kr (J.H.C.)

* Correspondence1: jchung@snu.ac.kr (J.H.C.)

** Correspondence2: pnkjchem@gmail.com (P.G.)

***Correspondence3: uhun906@gmail.com (H.S.)

Supplementary Information

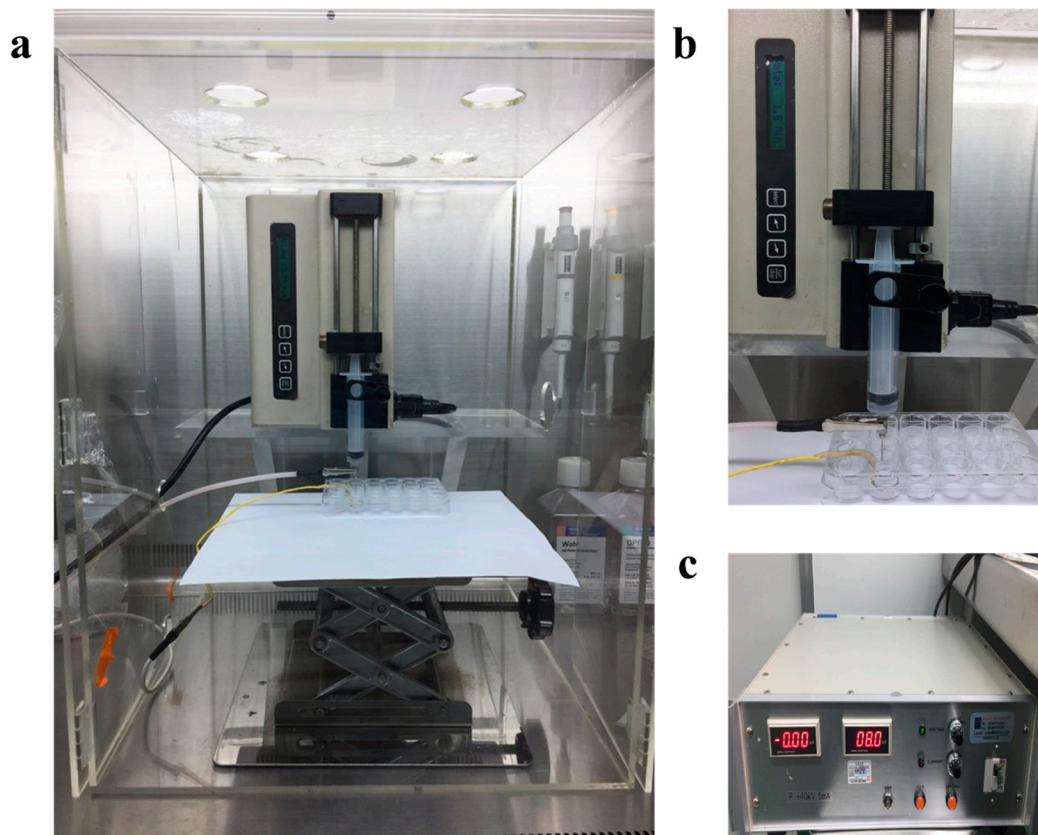


Figure S1. Components of CDES system.

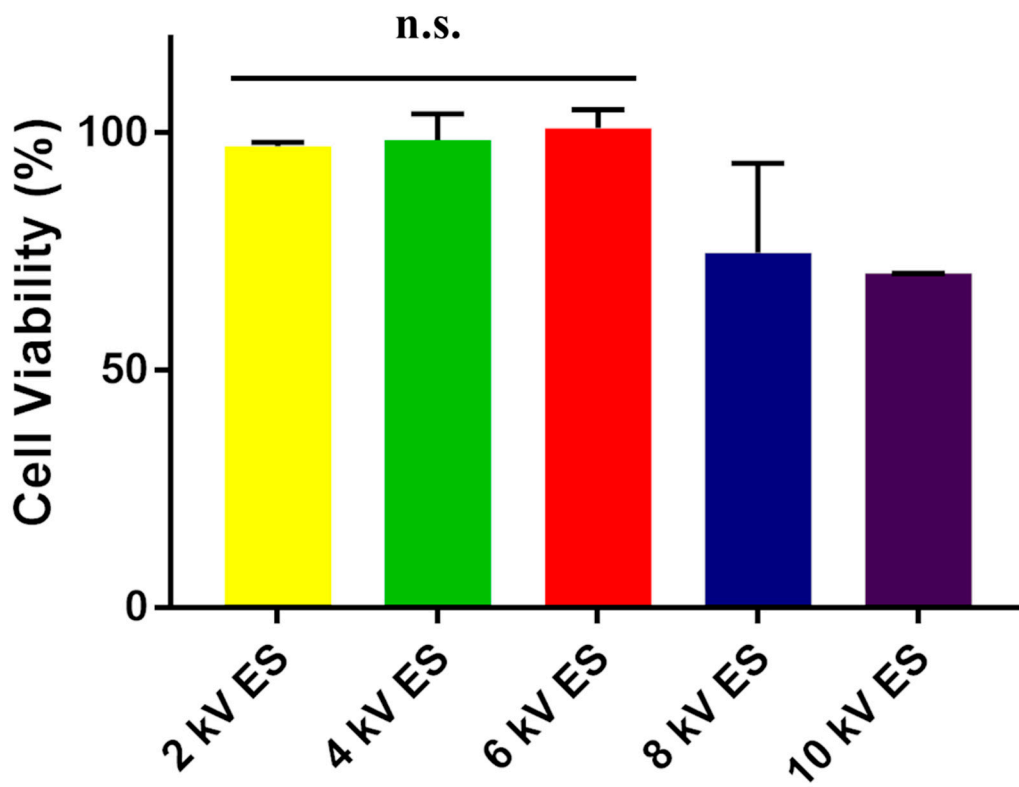


Figure S2. Cell viability after electrostatic spray (ES) at various voltages. When the ES was treated with a voltage of 6 kV or less, no toxicity to the cells was observed, but the damage to the cells was found to be large from the ES of 8 kV.

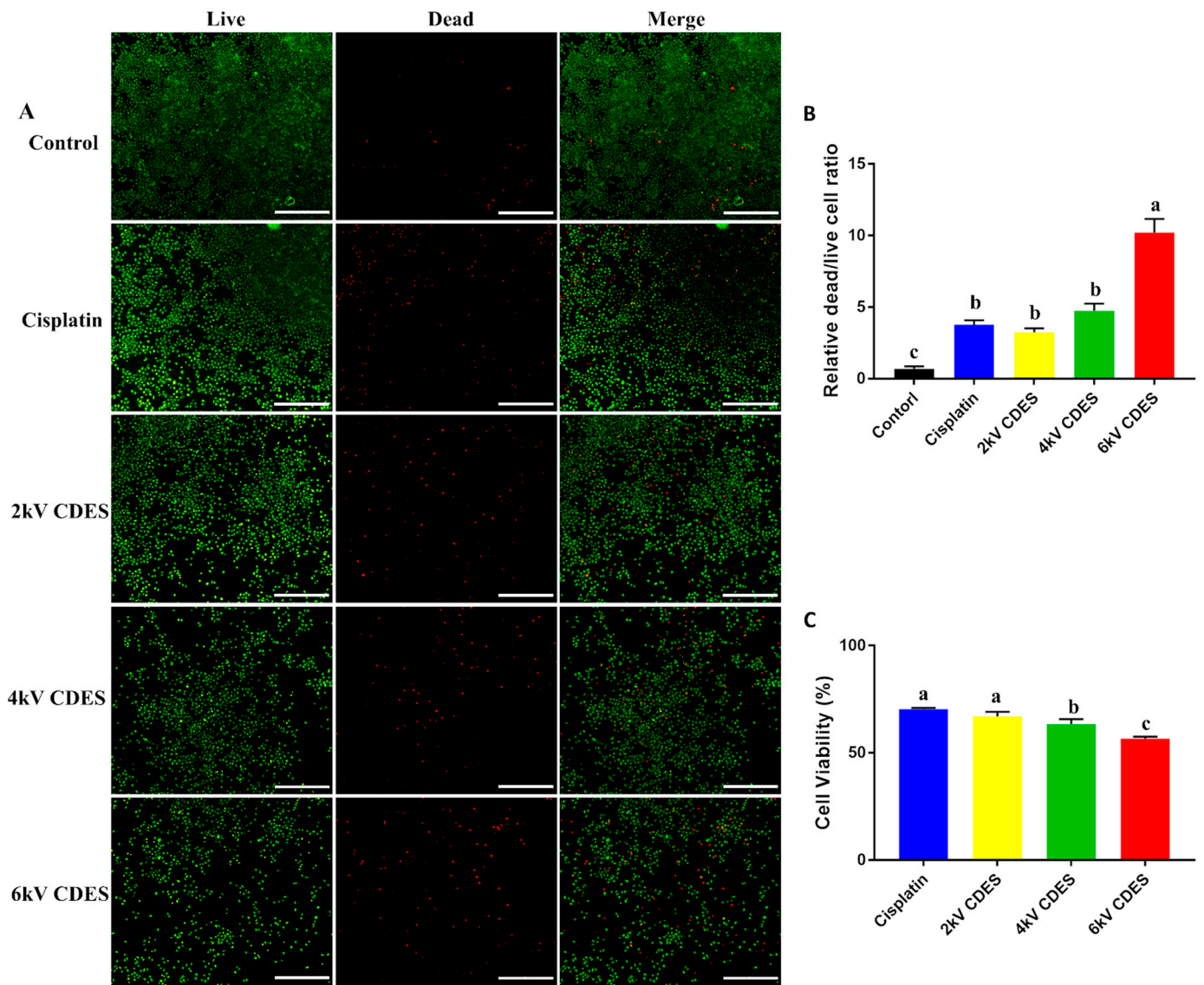


Figure S3. Comparison of cell viability at various voltage CDES. Live and dead assay of electro spray with cisplatin at various voltages (Control, Cisplatin, 2kV CDES, 4kV CDES, 6kV CDES), (b) The bar graph of dead/live ratio (c) WST assay of CDES (scale bar: 1 mm, n = 3, p < 0.05. Columns with different letters are significantly different according to one-way ANOVA and Duncan's test) CDES at 6kV induced the largest number of cancer cell deaths 1day after treatments.