

Supplementary Materials

Rapid-Response Magnetic Enrichment Strategy for Significantly Improving Sensitivity of Multiplex PCR Analysis of Pathogenic *Listeria* Species

Fangbin Xiao, Xuekun Bai, Keyu Wang, Yifan Sun, Hengyi Xu *

State Key Laboratory of Food Science and Technology, Nanchang University,
Nanchang 330047, China;

Correspondence to:

Hengyi Xu

State Key Laboratory of Food Science and Technology, Nanchang University.

Address: 235 Nanjing East Road, Nanchang 330047, China.

Phone: +0086-791-8830-4447-ext-9520.

Fax: +0086-791-8830-4400.

E-mail: kidyxu@163.com or HengyiXu@ncu.edu.cn.

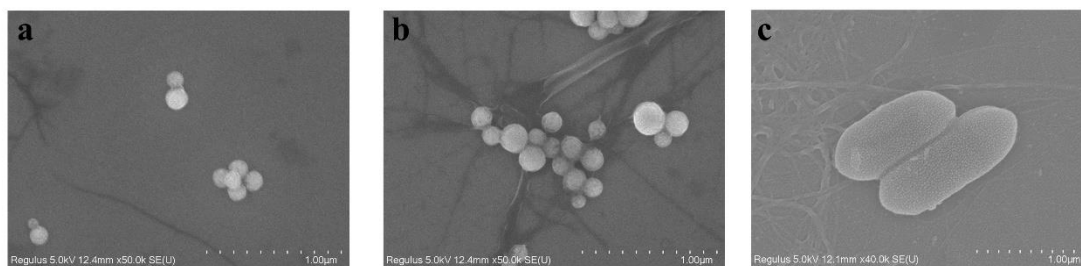


Figure S1. SEM images of MNP (a), PEI-MNPs (b) and pathogenic *Listeria* (c).

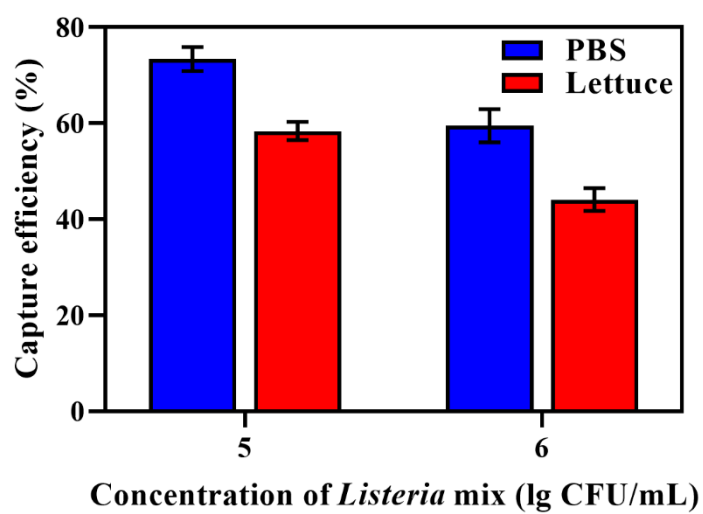


Figure S2. CE of pathogenic *Listeria* at the concentrations from 10^5 CFU/mL to 10^6 CFU/mL by 100 μ g PEI-MNPs in PBS and lettuce.