

Table S1. Elution gradient of HPLC analysis by Lab. APPA Trento.

Time (min)	Ultrapure Water Concentration (%)	Acetonitrile Concentration (%)
0	40	60
7	40	60
13	30	70
17	20	80
20	0	100

Table S2. Elution gradient of HPLC analysis by Lab. RSE.

Time (min)	Ultrapure Water Concentration (%)	Acetonitrile Concentration (%)
0	60	40
4	60	40
16	45	55
22	20	80
24	20	80
24.5	60	40
35	60	40

Analytical Results

Tables S3 and S4 shows the average formaldehyde value in each of the sampling conducted during First and Second campaign.

Table S3. Analytical values obtained by Lab. APPA Trento and Lab. RSE using different methods during first campaign.

Samplings	LAB A Sampling LAB A—EPA 323 Analysis (mg/m³)	LAB B Sampling LAB A—VDI 3862 Analysis (mg/m³)	LAB B Sampling LAB B Analysis—VDI 3862 (mg/m³)
1	3.25	15.32	16.72
2	2.07	2.10	1.21
3	6.09	17.96	23.71
4	0.33	4.83	3.13
5	0.22	8.44	7.25
6	0.25	4.41	3.00
7	0.24	4.58	2.91
8	0.32	4.64	2.88
9	5.91	6.14	5.35
10	6.48	5.78	4.35
11	5.49	5.76	3.74
12	6.02	4.98	3.00
13	6.45	5.58	3.41
14	5.83	5.67	6.40

Table S4. Analytical values obtained by Lab. APPA Trento and Lab. RSE using different methods during second campaign.

Samplings	LAB A Sampling	LAB B Sampling	LAB B Sampling
	LAB A—EPA 323 Analysis (mg/m ³)	LAB A—VDI 3862 Analysis (mg/m ³)	LAB B Analysis—VDI 3862 (mg/m ³)
1	2.32	3.47	2.39
2	2.28	3.06	1.65
3	2.52	3.31	1.77
4	2.71	3.26	1.66
5	2.58	3.10	1.86
6	3.05	3.41	1.56
7	3.11	3.42	1.45
8	3.29	3.59	1.64
9	3.27	3.62	1.58
10	3.65	3.77	1.62
Average	2.09	3.40	2.88
Uncertainty	1.07	0.45	0.92

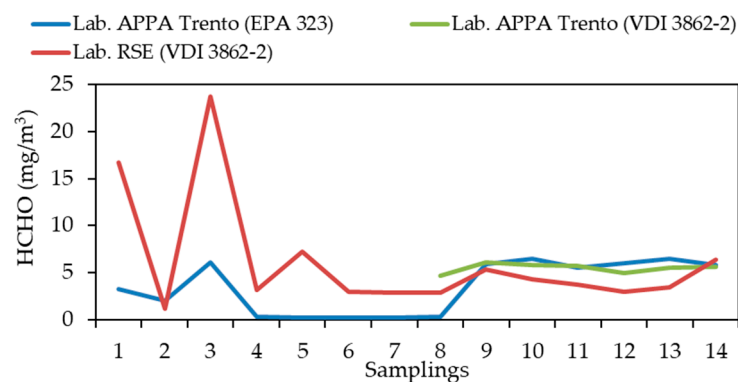


Figure S1. Comparison between the values measured during the first campaign.

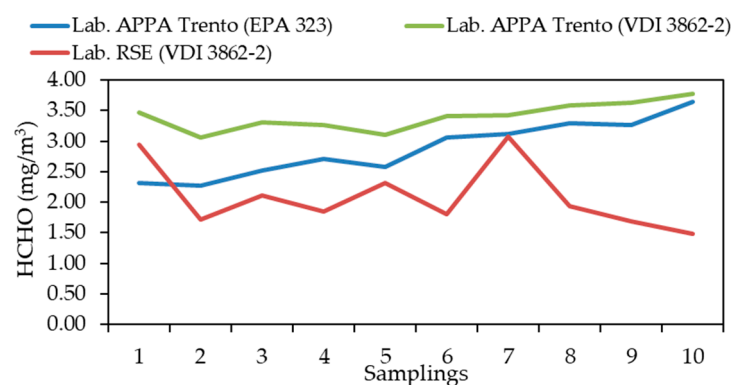


Figure S2. Comparison between the values measured during the second campaign.