

Case Report

A Case of Hemophagocytic Lymphohistiocytosis Triggered by Disseminated Tuberculosis and Hairy Cell Leukaemia after SARS-CoV2 Infection

Alessandro Cellini ^{1,†}, Andrea Visentin ^{1,2,†}, Massimiliano Arangio Febbo ¹, Susanna Vedovato ¹, Serena Marinello ³, Ivo Tiberio ⁴, Livio Trentin ^{1,2,*} and Carmela Gurrieri ¹

- ¹ Hematology and Clinical Immunology Unit, Department of Medicine, University of Padua, 35128, Padua, Italy; alessandro.cellini@studenti.unipd.it (A.C.); andrea.visentin@unipd.it (A.V.); massimilianoaf@gmail.com (M.A.F.); susanna.vedovato@gmail.com (S.V.); carmela.gurrieri@unipd.it (C.G.)
 - ² Veneto Institute of Molecular Medicine, Centro di Eccellenza per la Ricerca Biomedica Avanzata, 35129 Padua, Italy
 - ³ Infective and Tropical Disease Unit, Padua University Hospital, 35128, Padua, Italy; serena.marinello@aopd.veneto.it
 - ⁴ Anesthesiology and Intensive Care Unit, Padua University Hospital, 35128, Padua, Italy; ivo.tiberio@aopd.veneto.it
- * Correspondence: livio.trentin@unipd.it; Tel.: +39-049-821-2298
† Equally contributed authors.

Citation: Cellini, A.; Visentin, A.; Arangio Febbo, M.; Vedovato, S.; Marinello, S.; Tiberio, I.; Trentin, L.; Gurrieri, C. A Case of Hemophagocytic Lymphohistiocytosis Triggered by Disseminated Tuberculosis and Hairy Cell Leukemia after SARS-CoV2 Infection. *Appl. Sci.* **2022**, *12*, 564. <https://doi.org/10.3390/app12020564>

Academic Editor: Livio Trentin

Received: 3 November 2021

Accepted: 5 January 2022

Published: 7 January 2022

Publisher's Note: MDPI stays neutral with regard to jurisdictional claims in published maps and institutional affiliations.



Copyright: © 2022 by the authors. Licensee MDPI, Basel, Switzerland. This article is an open access article distributed under the terms and conditions of the Creative Commons Attribution (CC BY) license (<https://creativecommons.org/licenses/by/4.0/>).

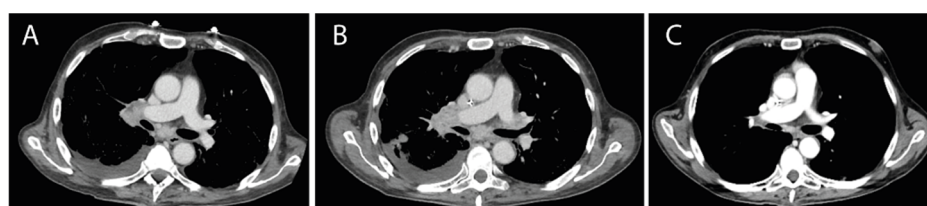


Figure S1. Side by side comparison of right hilar and subcarinal lymphadenomegaly at different time-points: start of anti-tubercular therapy (Panel A), after two months of therapy when immune reconstitution syndrome was suspected (Panel B), and after discharge (panel C).

Figure S1. Thoracic CT scans before and after the start of antitubercular therapy.