

Figure S1. TIC of the CFPS fraction (A) and MS spectra of the identified residues (B) after the trimethylsilylation step and analyses by GC/MS-EI.

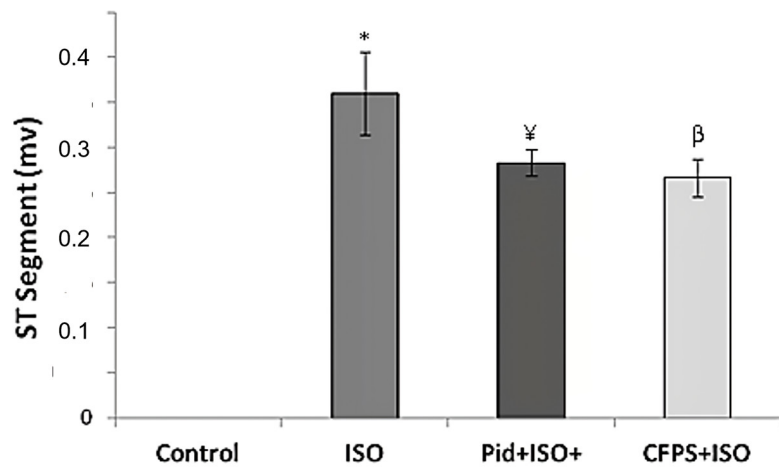


Figure S2: Effect of CFPS pre-cotreatment on the ST segment of control and experimental animals.

Values are expressed as mean \pm SD of eight rats in each group.

* $p < 0.05$: Controls vs ISO.

¥ $p < 0.05$: CFPS+ISO or Pid+ISO vs ISO

β $p < 0.05$: CFPS+ISO vs Pid+ISO

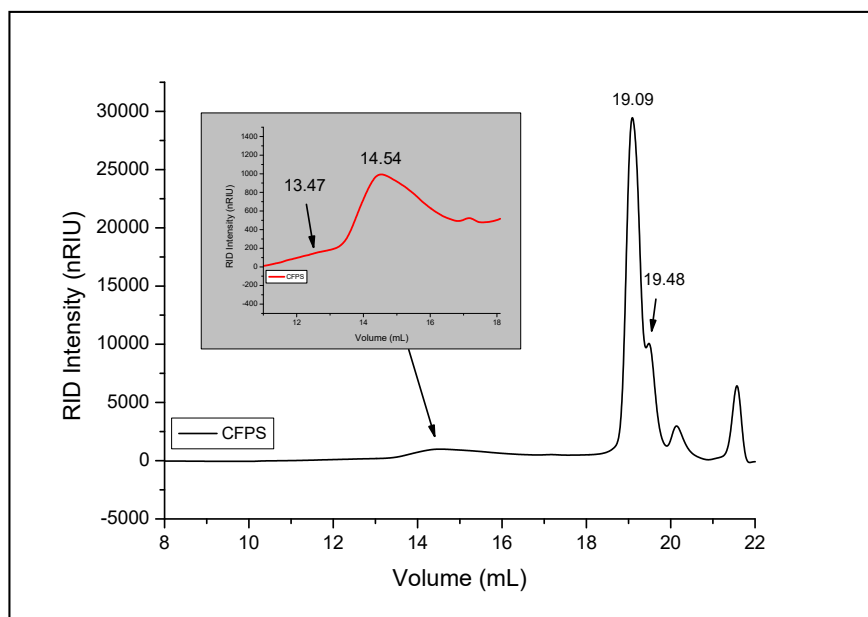


Figure S3: HPLC-SEC/RID profile of CFPS.