

## Supplementary materials for “An analysis of commercial noni juice: LC-MS/MS phenolic profiles and cytotoxic activity”

These figures show the calibration curves for the phenolic compounds, used for the purposes of quantitation and determination of the limits of quantification (LOQs).

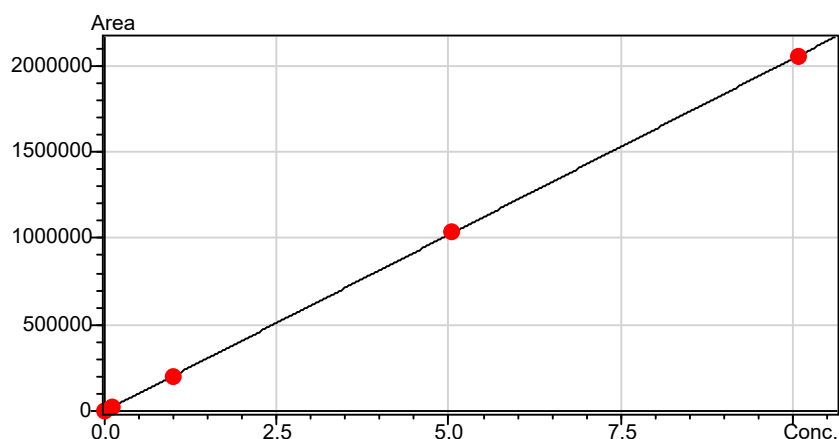


Figure S1. Calibration curve for gallic acid.

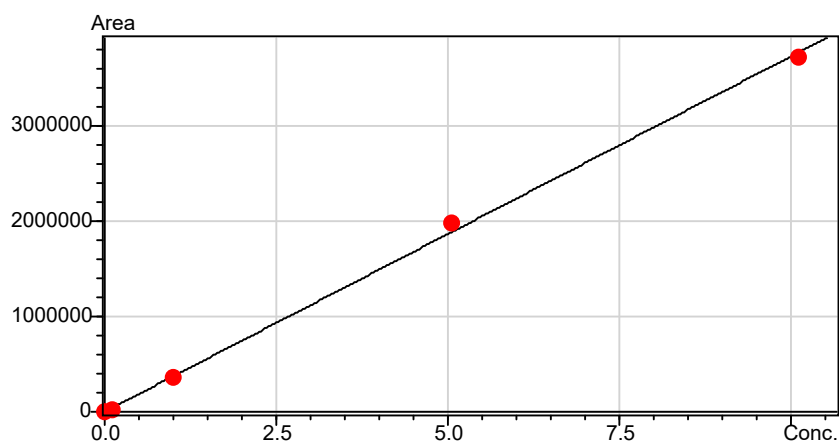


Figure S2. Calibration curve for protocatechuic acid.

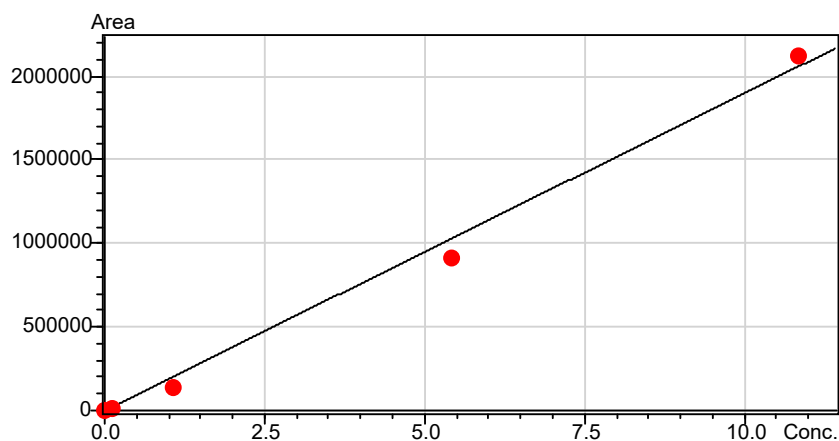


Figure S3. Calibration curve for gentisic acid.

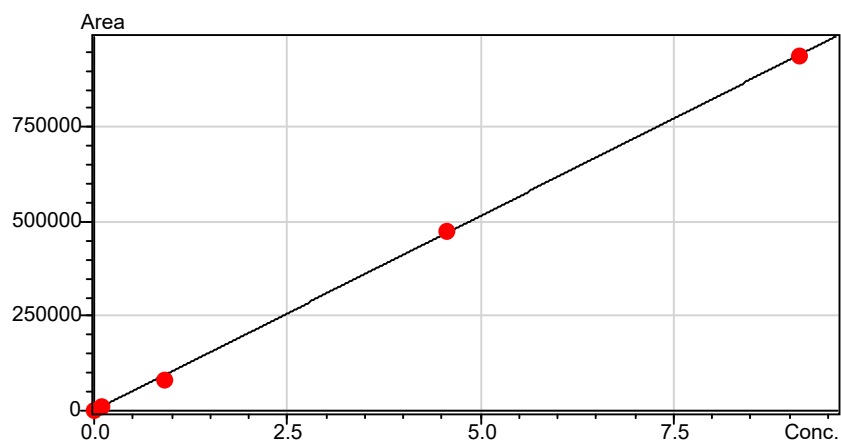


Figure S4. Calibration curve for neochlorogenic acid.

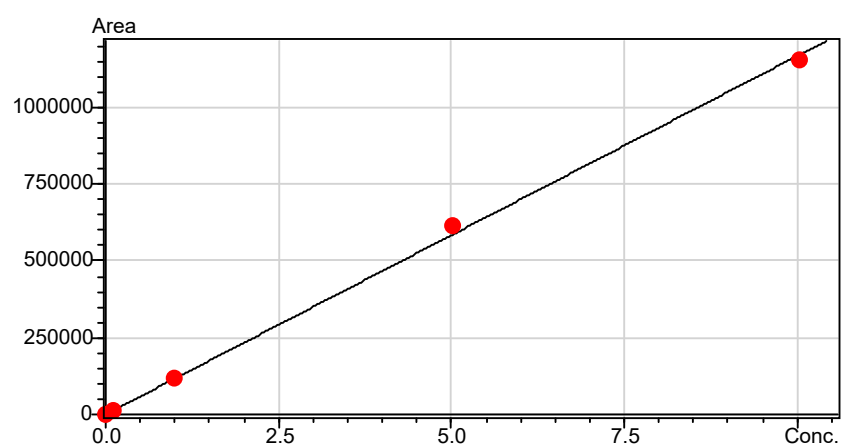


Figure S5. Calibration curve for 4-hydroxybenzoic acid.

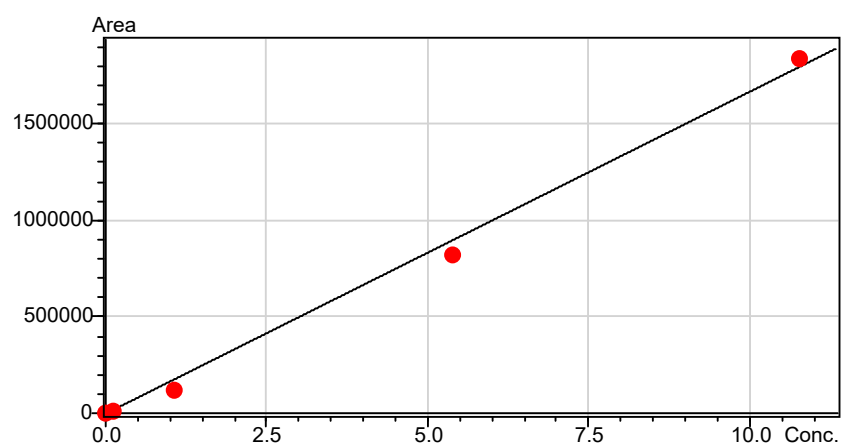


Figure S6. Calibration curve for (+)-catechin.

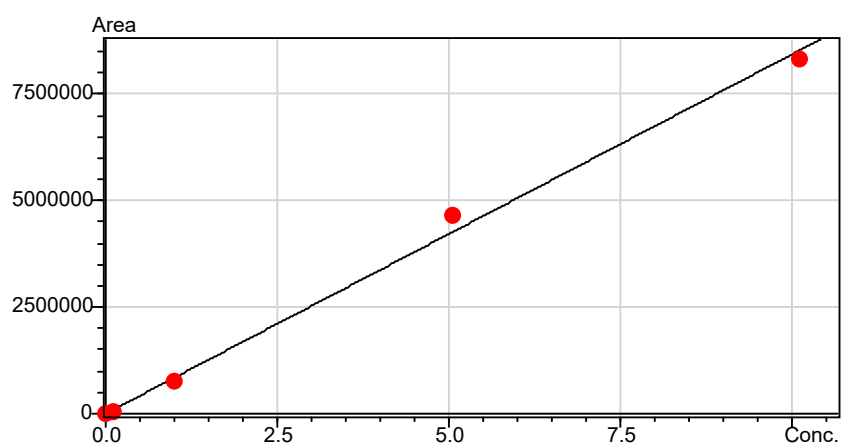


Figure S7. Calibration curve for caffeic acid.

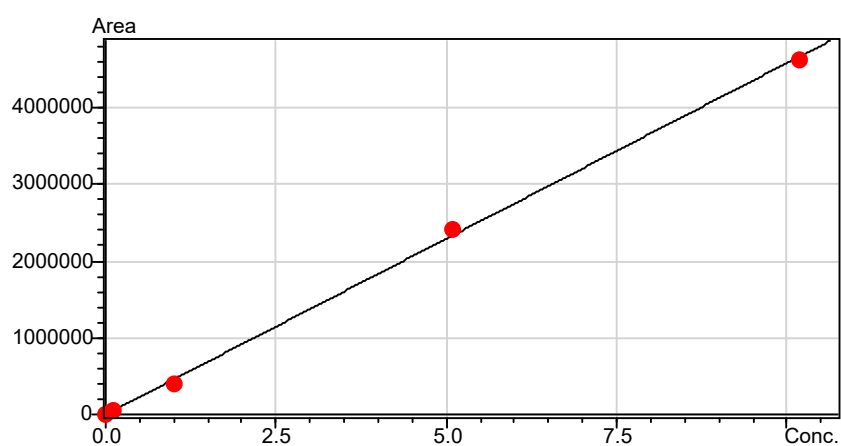


Figure S8. Calibration curve for chlorogenic acid.

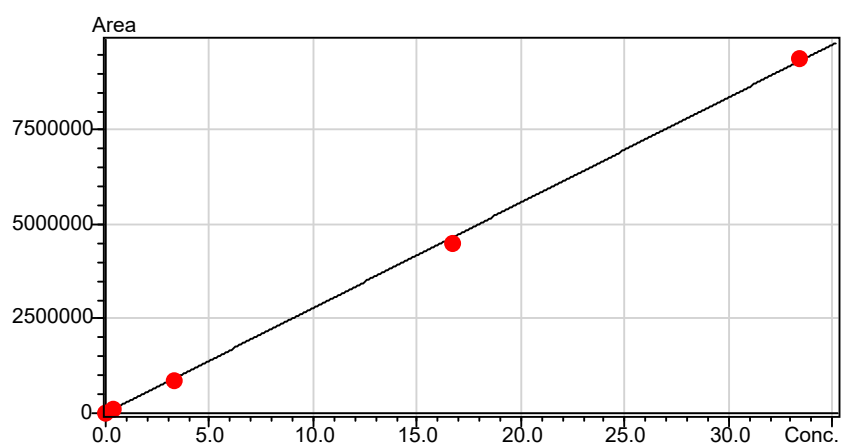


Figure S9. Calibration curve for cyanidin 3-glucoside.

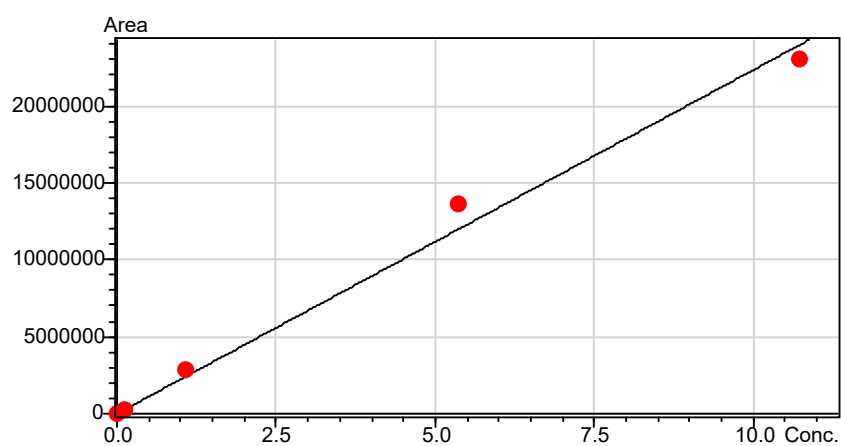


Figure S10. Calibration curve for salicylic acid.

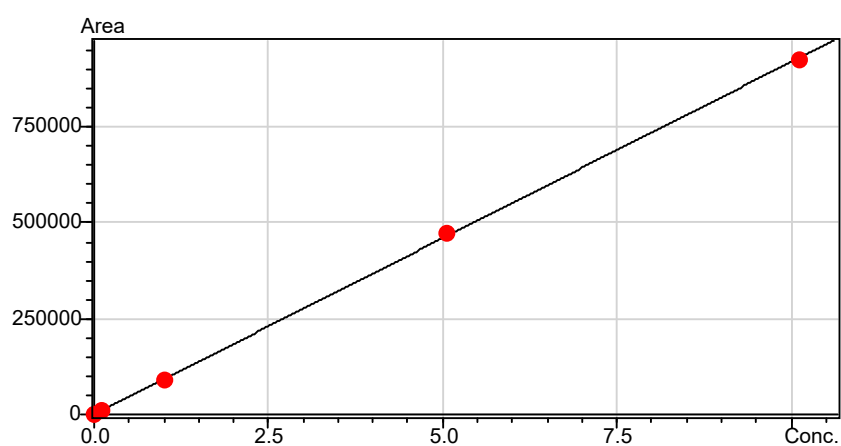


Figure S11. Calibration curve for vanillic acid.

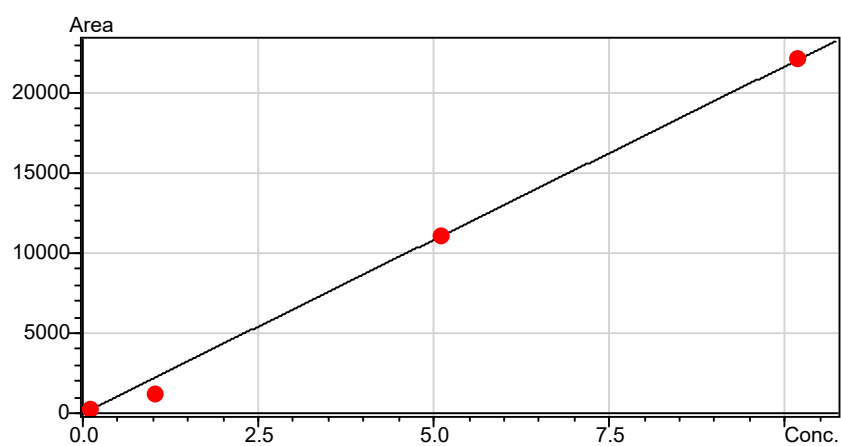


Figure S12. Calibration curve for syringic acid.

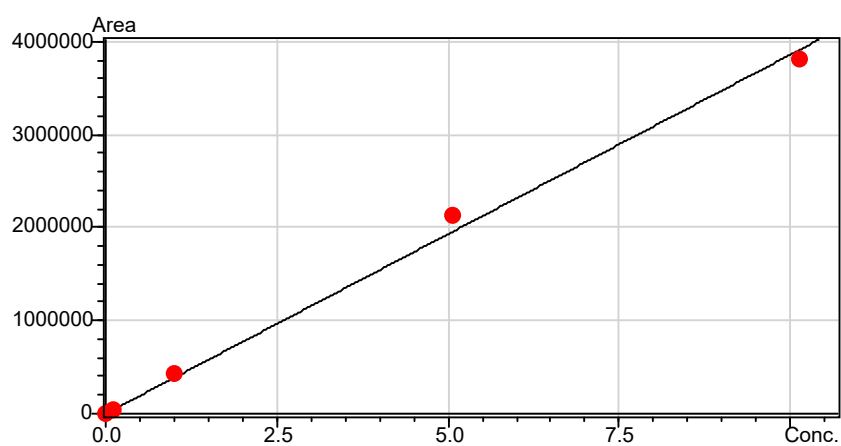


Figure S13. Calibration curve for p-coumaric acid.

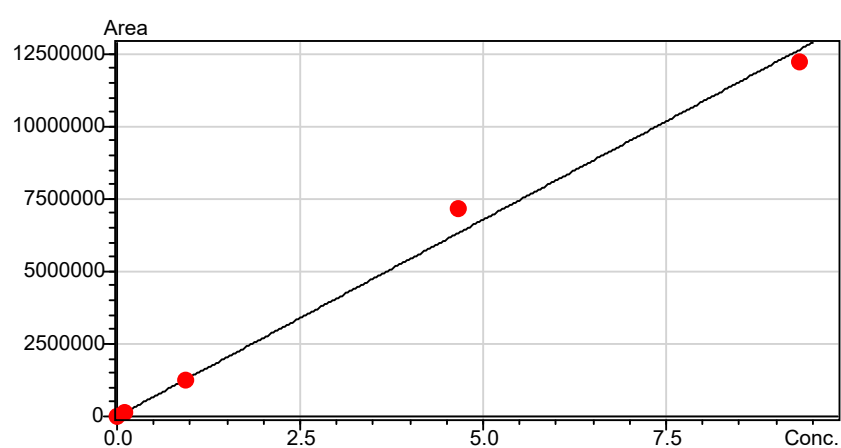


Figure S14. Calibration curve for malvidin 3-glucoside.

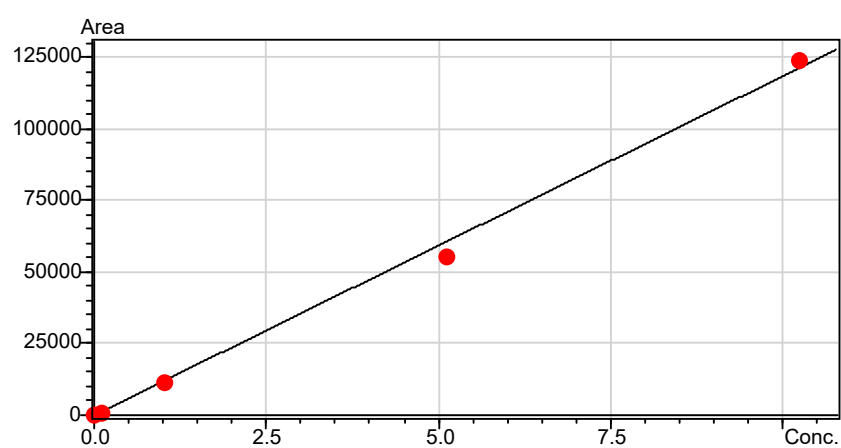


Figure S15. Calibration curve for ferulic acid.

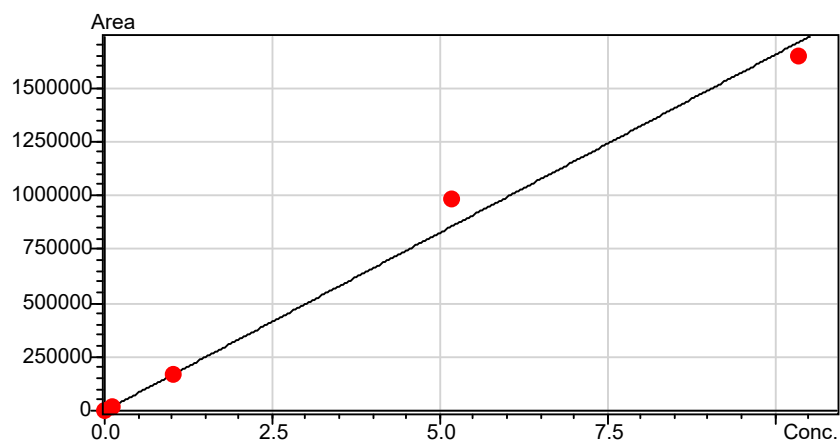


Figure S16. Calibration curve for vitexin.

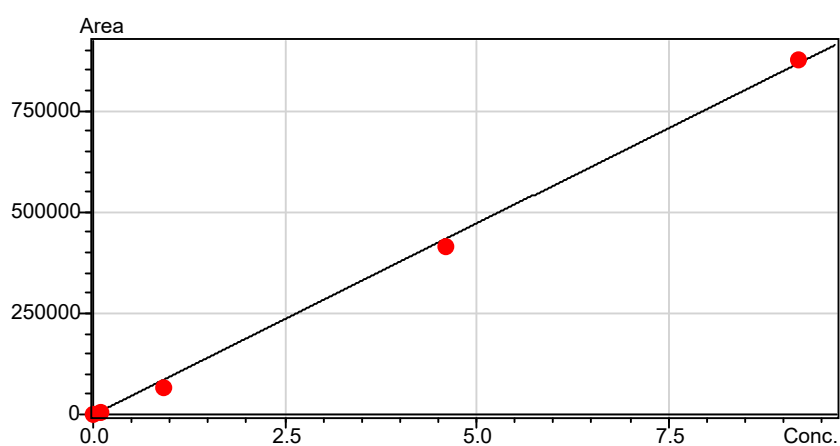


Figure S17. Calibration curve for rutin.

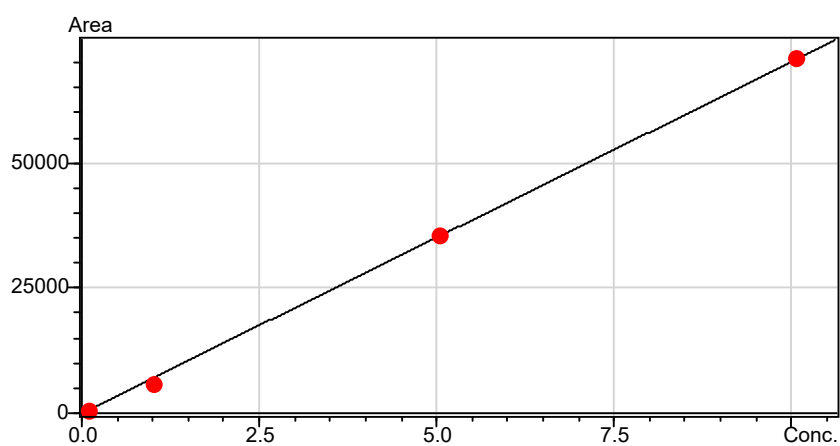


Figure S18. Calibration curve for sinapic acid.

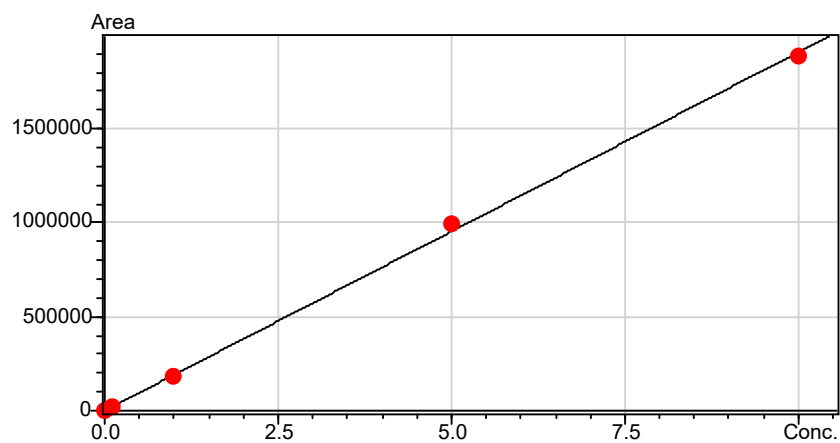


Figure S19. Calibration curve for quercetin 3-glucoside.

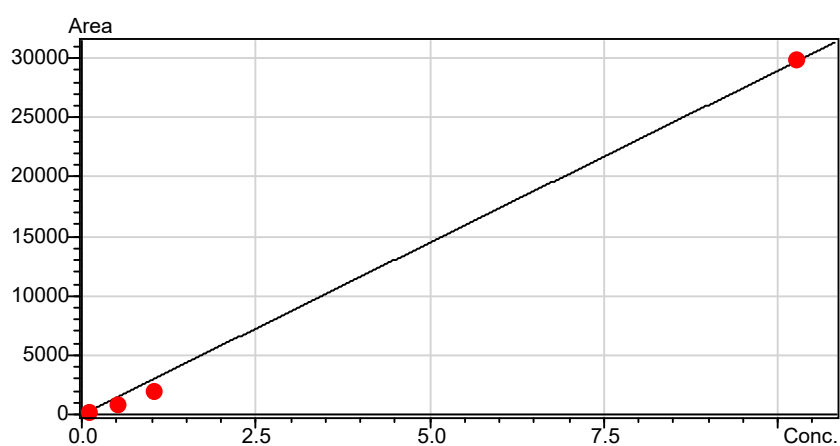


Figure S20. Calibration curve for ellagic acid.

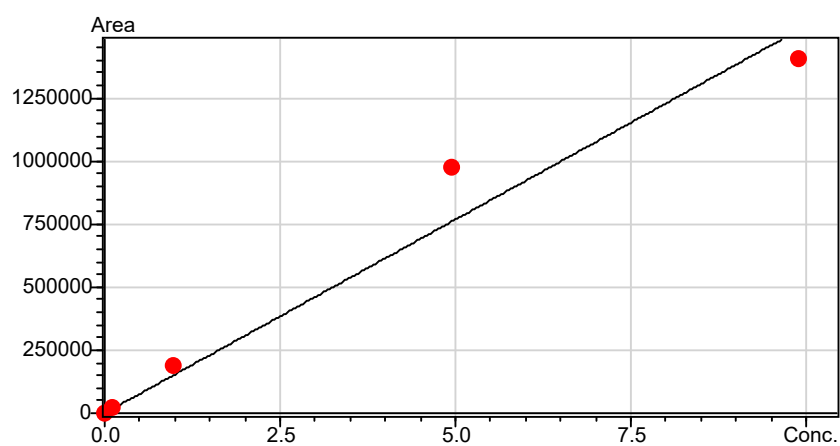


Figure S21. Calibration curve for myricetin.

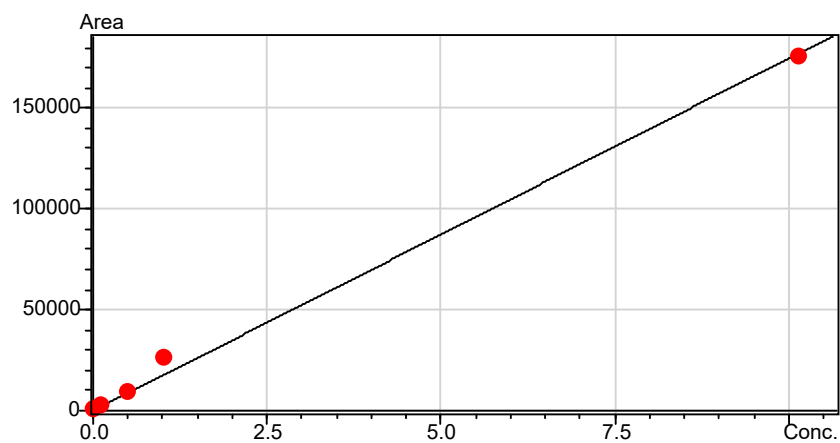


Figure S22. Calibration curve for resveratrol.

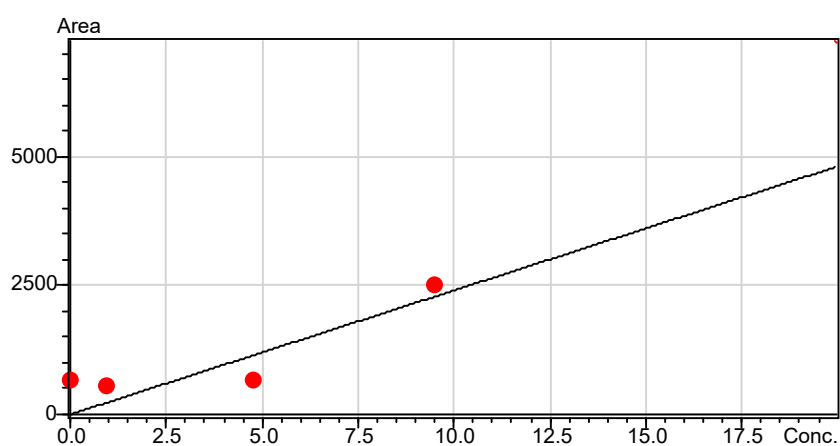


Figure S23. Calibration curve for pelargonidin. Note that LOQ was not calculated due to the high level of variability in the data.

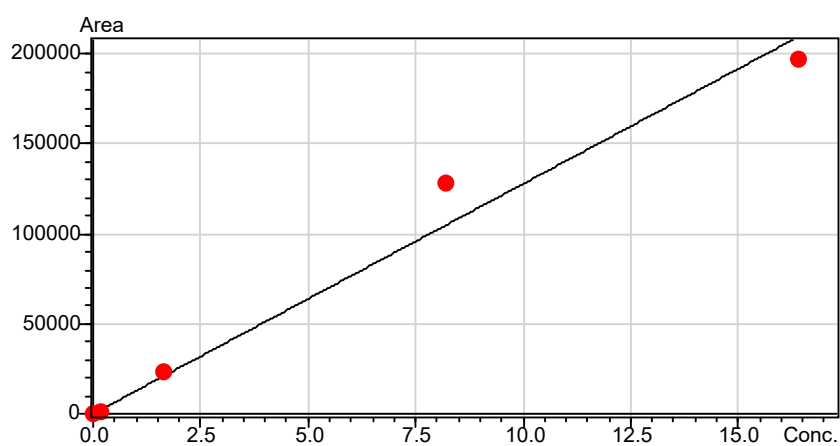


Figure S24. Calibration curve for delphinidin.



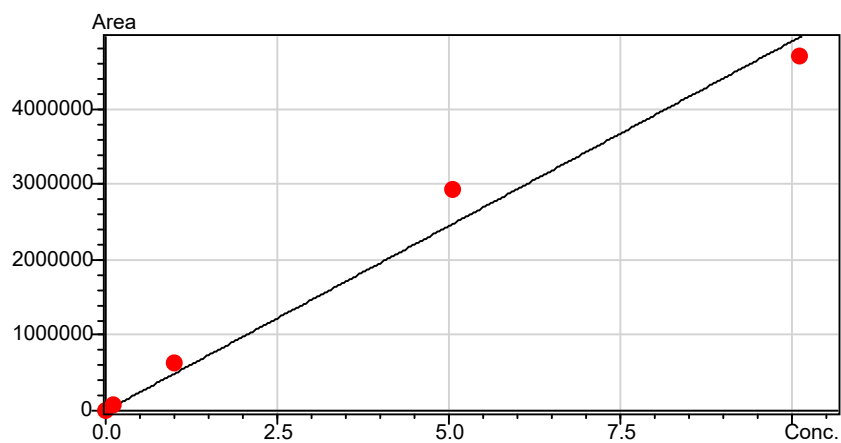


Figure S25. Calibration curve for quercetin.

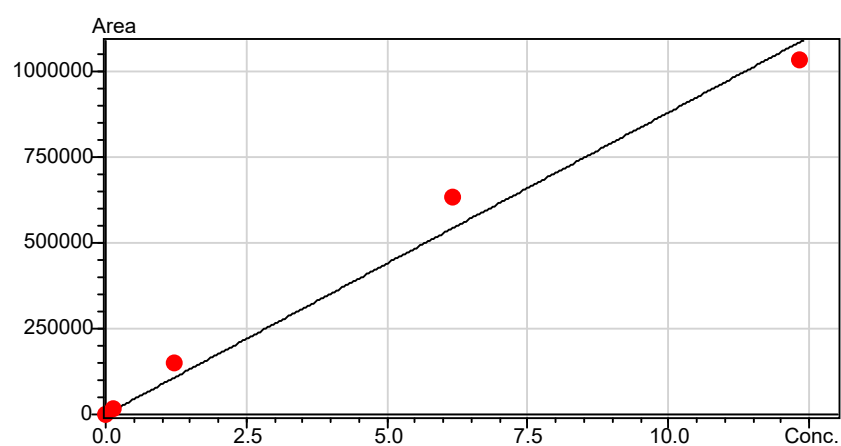


Figure S26. Calibration curve for luteolin.

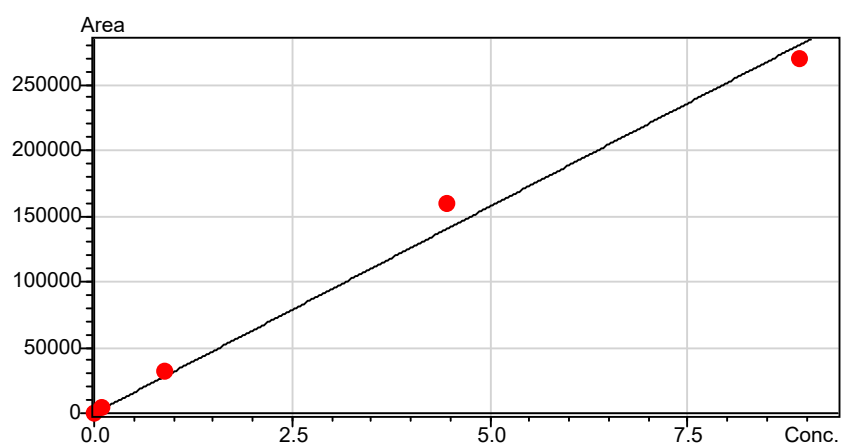


Figure S27. Calibration curve for cyanidin.

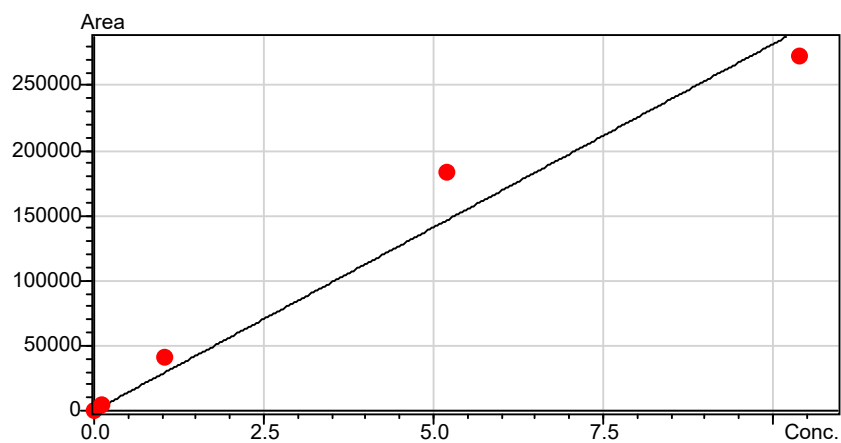


Figure S28. Calibration curve for kaempferol.

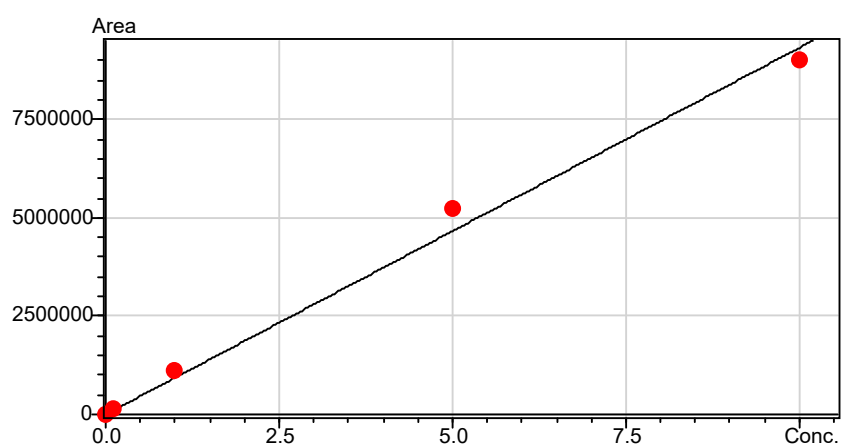


Figure S29. Calibration curve for naringenin.

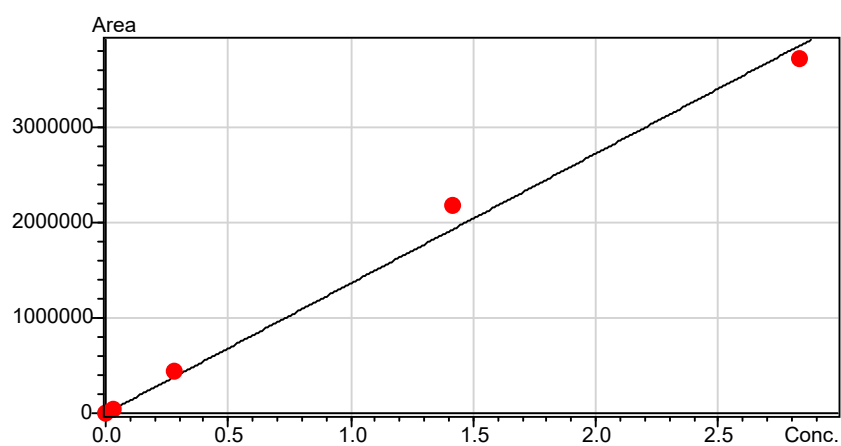


Figure S30. Calibration curve for apigenin.