

Supplementary File

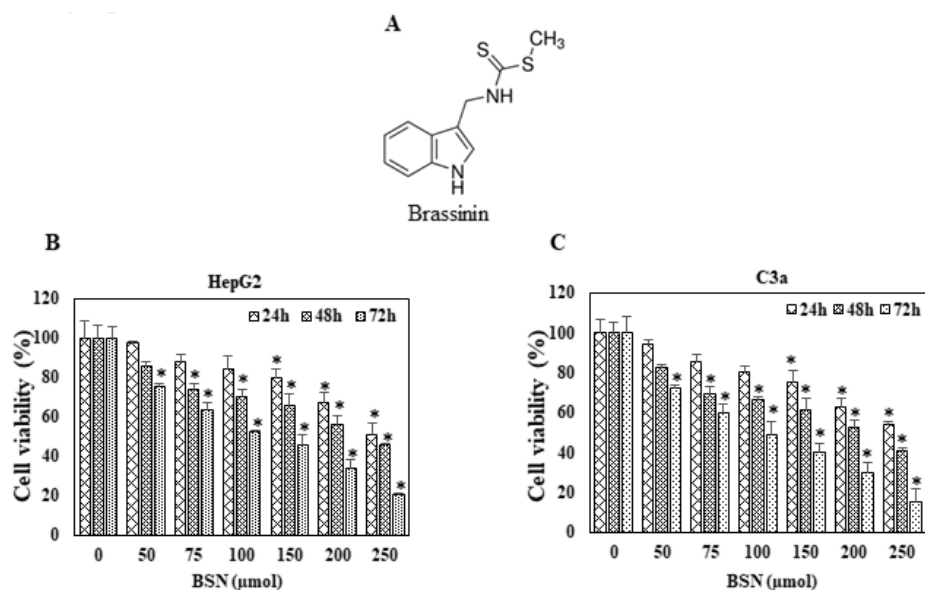


Figure S1. Brassinin inhibits cell growth. (A) The structure of BSN is shown, (B,C), HepG2, C3A cells were supplemented with BSN (0–250 μmol) for different periods, and cell viability was assessed with MTT assays. Bars indicate standard deviation; n = 3; * $p < 0.05$ versus no treatment.

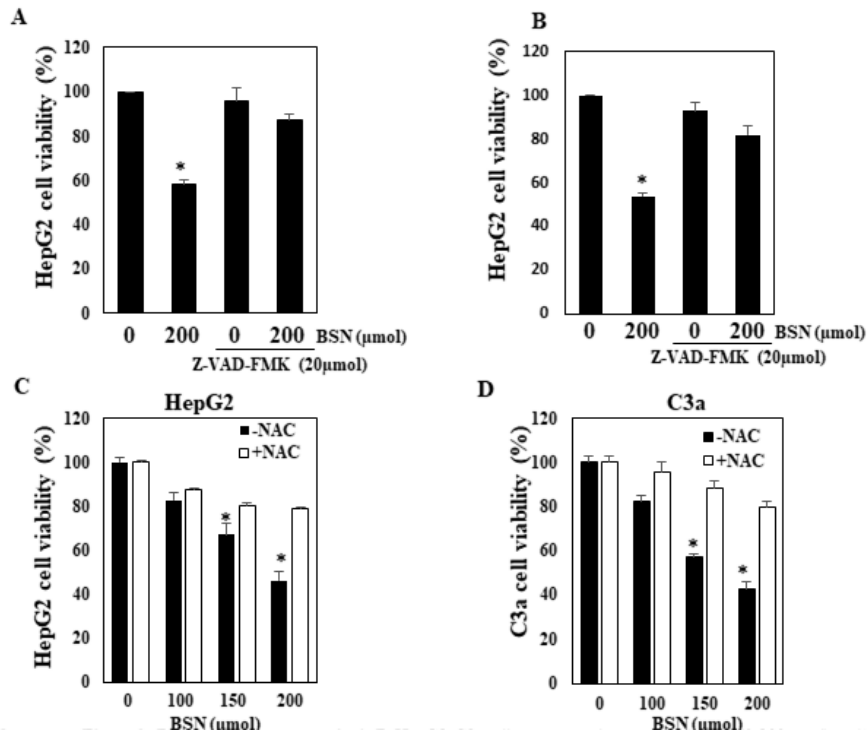


Figure S2. Brassinin induces apoptosis. (A,B) HepG2, C3a cells were supplemented with BSN (0–200 μmol) and/or caspase inhibitor Z-VAD-FMK

(20 μ mol) for 48 h, and cell viability was assessed with MTT assays. (C,D) HepG2, C3a cells were supplemented with BSN (0–200 μ mol) and/or ROS inhibitor NAC (3 mmol) for 48 h, and cell viability was assessed with MTT assays. Bars indicate standard deviation; n = 3; * p < 0.05 versus no treatment.

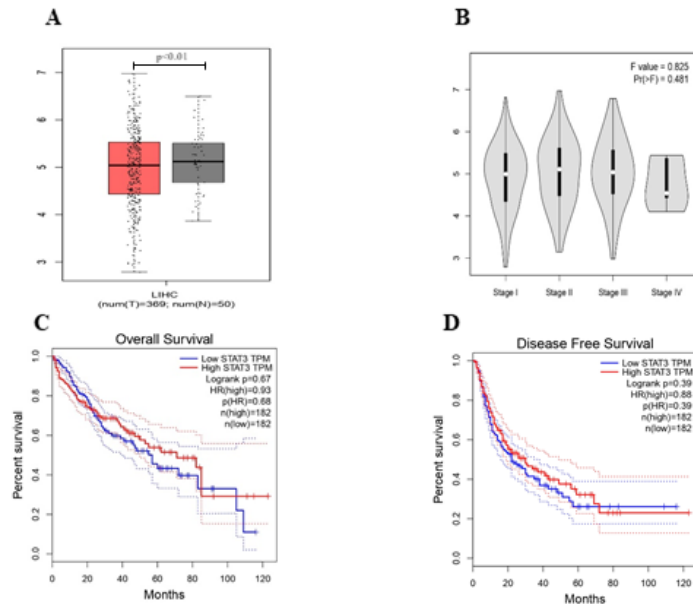


Figure S3. STAT3 is overexpressed in tumor tissues, and its expression correlates with OS and RFS of LIHC patients. (A), Results from the GEPIA public database indicate that STAT3 expression in LIHC is higher than adjacent non-tumor liver tissues. (B), STAT3 mRNA expression was remarkably positively associated with a pathological stage in LIHC. (C,D), Online analysis of RFS shows that higher STAT3 expression indicates a poorer prognosis of LIHC has no significance in LIHC.