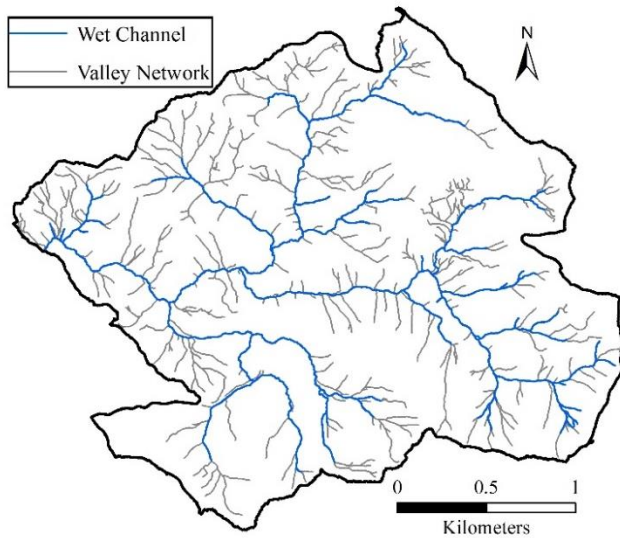


Definition of Perennial Streams Based on a Wet Channel Network Extracted from LiDAR Data

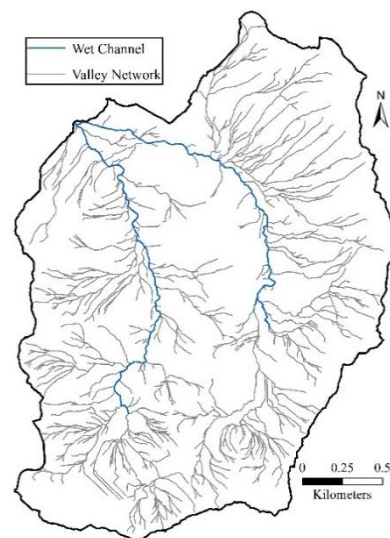
Seoyoung Kim ¹, Sun-Kwon Yoon ^{2,*}, and Namjeong Choi ³

Table S1. Total valley length, wet channel length, and wet channel ratio for the study watersheds.

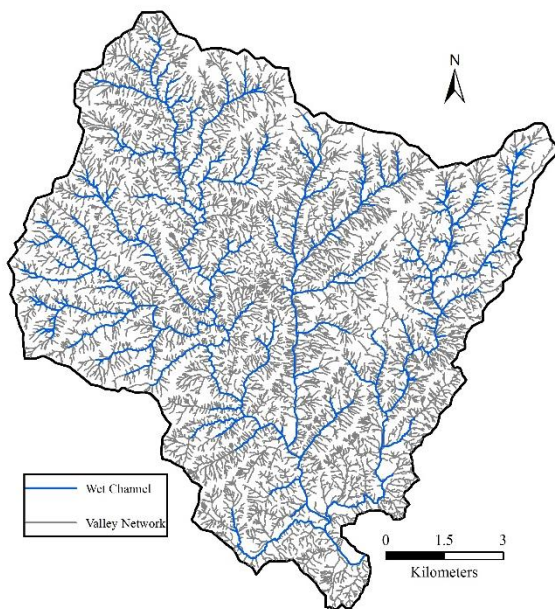
Watershed	E_P/P	Total Valley Length (km)	Wet Channel Length (km)	Wet Channel Ratio (%)
Tucca Creek, OR	0.3	62.7	19.6	31.3
Schafer Creek, OR	0.4	87.1	5.0	5.8
Chattahoochee River, GA	0.8	1241.1	327.1	26.4
Ward Creek, CA (Upstream)	0.9	164.2	45.6	27.7
Blue Springs Creek, AL	0.9	188.2	90.6	48.1
Cedar Creek, KY	1.0	193.1	65.7	34.0
Brier Creek, KY	1.0	165.9	37.7	22.7
Blackwood Creek, CA (2010)	1.0	416.8	82.9	19.9
Blackwood Creek, CA (2012)	1.0	417.4	113.2	27.1
Ward Creek, CA (2010)	1.0	257.5	62.8	24.4
Ward Creek, CA (2012)	1.0	257.5	83.9	32.6
South Fork Quantico Creek, VA	1.0	92.6	49.7	53.7
Middle Branch Chopawamsic Creek, VA	1.1	52.9	20.9	39.4
North Branch Chopawamsic Creek, VA	1.1	79.5	35.9	45.2
South Branch Chopawamsic Creek, VA	1.1	31.2	13.8	44.3
General Creek, CA	1.1	218.4	21.6	9.9
Allison Creek, SC	1.1	376.1	158.2	42.1
Wildcat Creek, SC	1.1	176.7	96.7	54.7
Pennington Creek, OK	1.3	101.7	57.3	56.3
Mill Creek, OK	1.3	114.9	89.4	77.8
Rock Creek, OK	1.3	436.8	252.8	57.9
Incline Creek, NV (Upstream)	1.4	55.5	14.1	25.4
North Criner Creek, OK	1.5	84.6	21.4	25.3
Incline Creek, NV	1.5	134.4	22.1	16.5
Trout Creek, CA	1.6	208.4	38.4	18.4
Little Washita River, OK	1.6	62.1	32.3	52.0
Little Washita River, OK (Upstream)	1.6	10.2	6.1	60.4
Lake Creek, OK	1.7	120.8	57.5	47.6
Logan House Creek, NV	1.9	22.3	3.3	14.8
Glenbrook Creek, NV	2.1	51.1	7.2	14.1
Eagle Rock Creek, NV	2.1	14.9	1.4	9.6
Pine Creek near Clarno, OR	2.7	1436.0	486.2	33.9



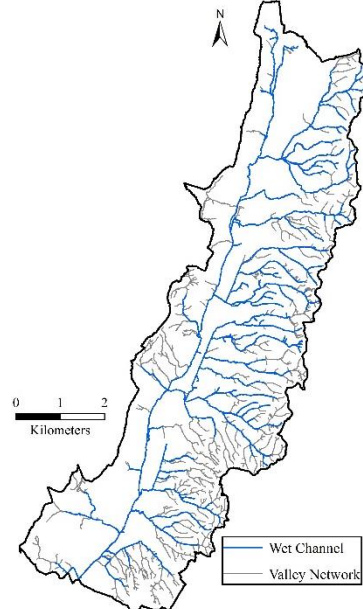
(a) Tucua Creek, OR



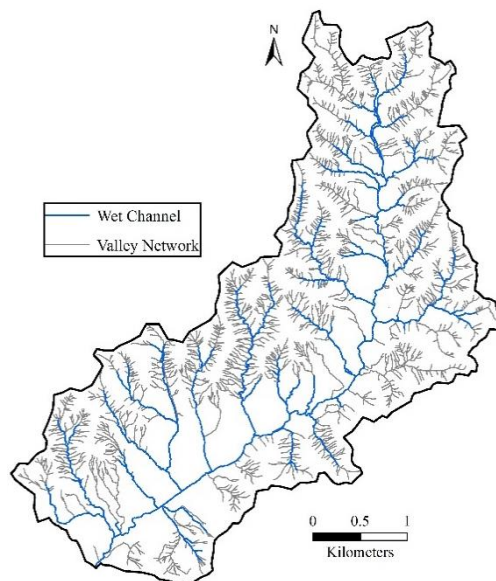
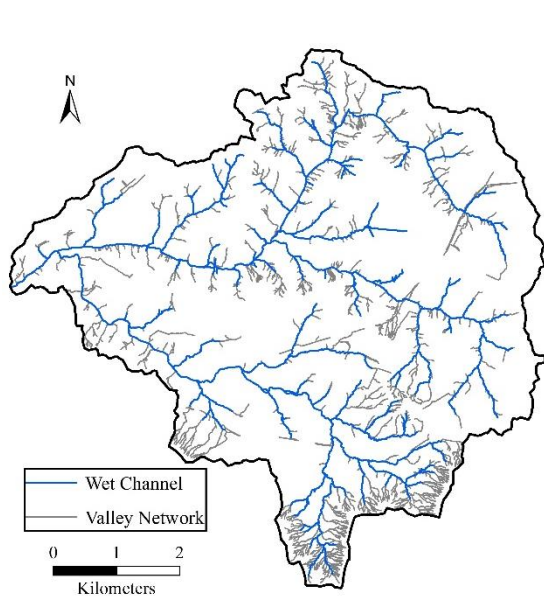
(b) Schafer Creek, OR



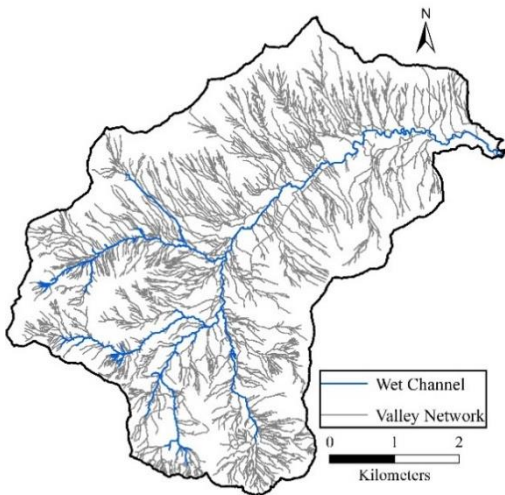
(c) Chattahoochee River, GA



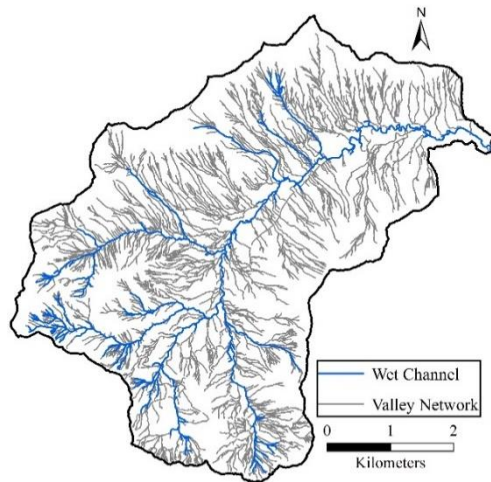
(d) Blue Springs Creek, AL



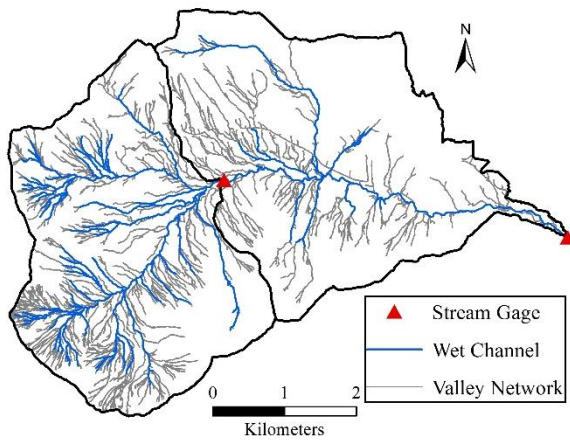
(f) Cedar Creek, KY



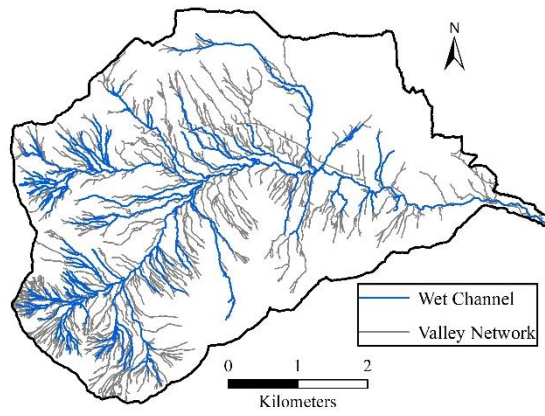
(g) Brier Creek, KY



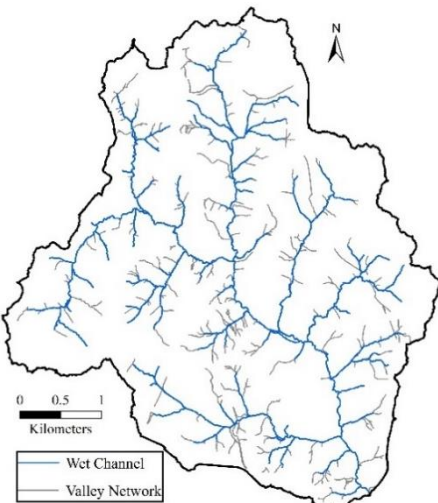
(h) Blackwood Creek (2010), CA



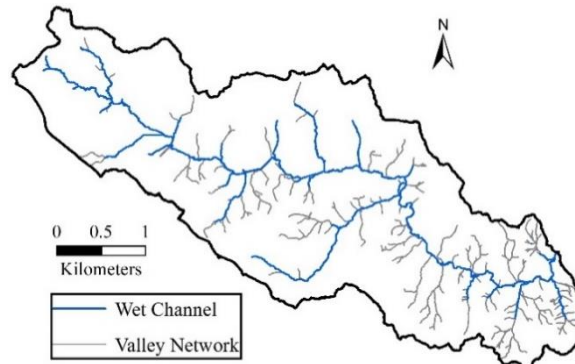
(i) Blackwood Creek (2012), CA



(j) Ward Creek (2010), CA

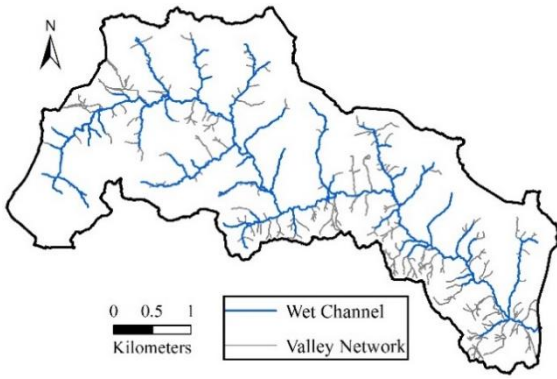


(k) Ward Creek (2012), CA

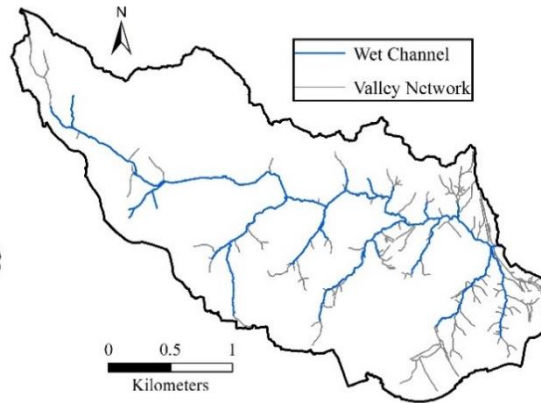


(l) South Fork Quantico Creek, VA

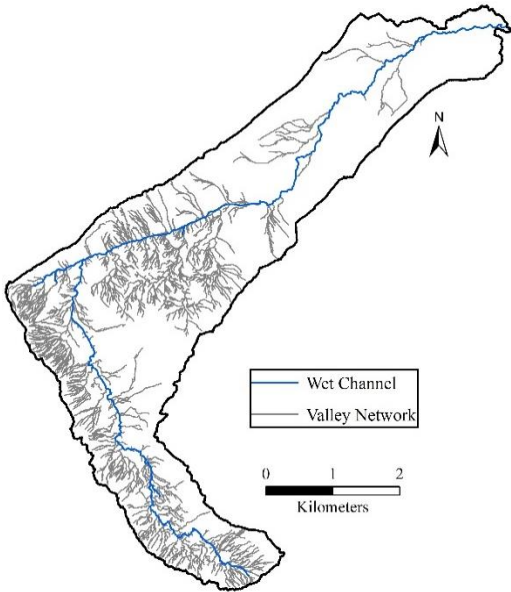
(m) Middle Branch Chopawamsic Creek, VA



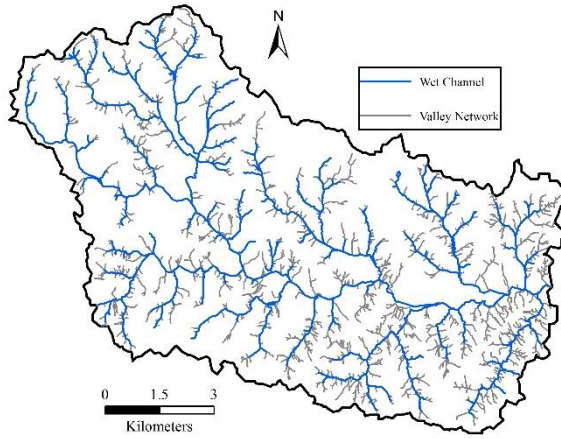
(n) North Branch Chopawamsic Creek, VA



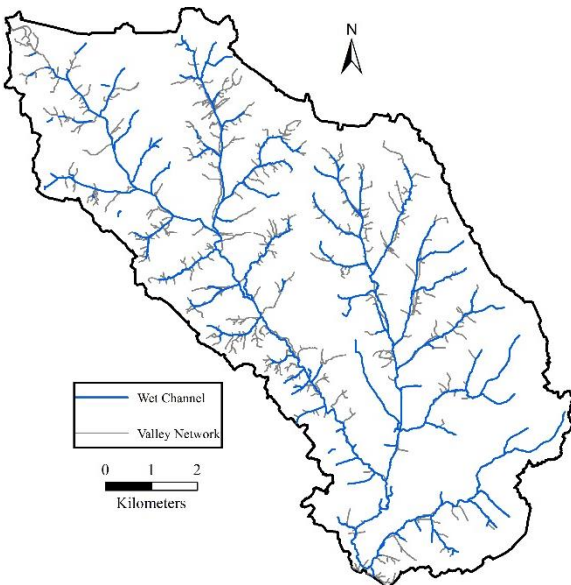
(o) South Branch Chopawamsic Creek, VA



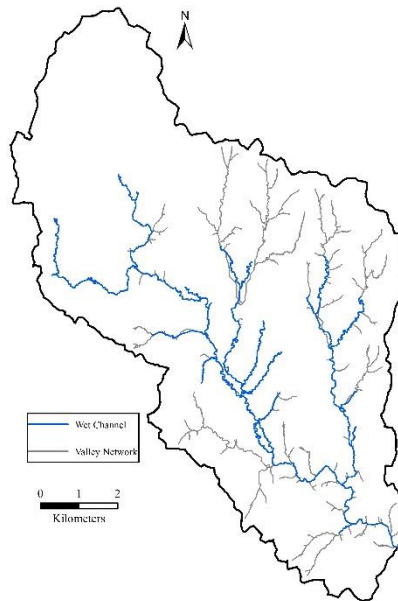
(p) General Creek, CA



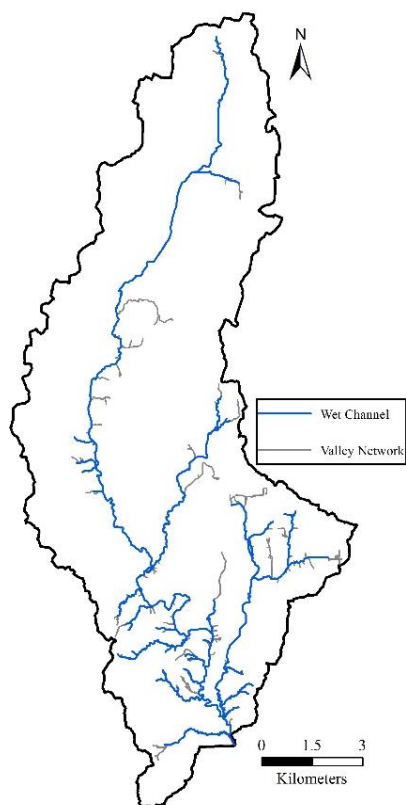
(q) Allison Creek, SC



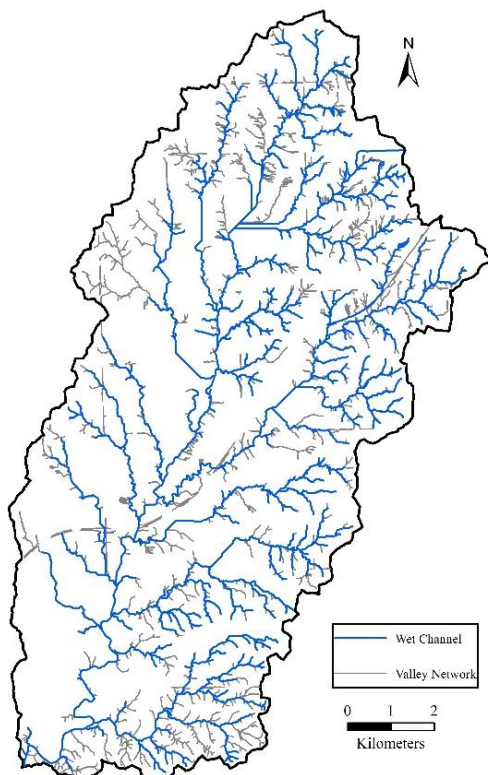
(r) Wildcat Creek, SC



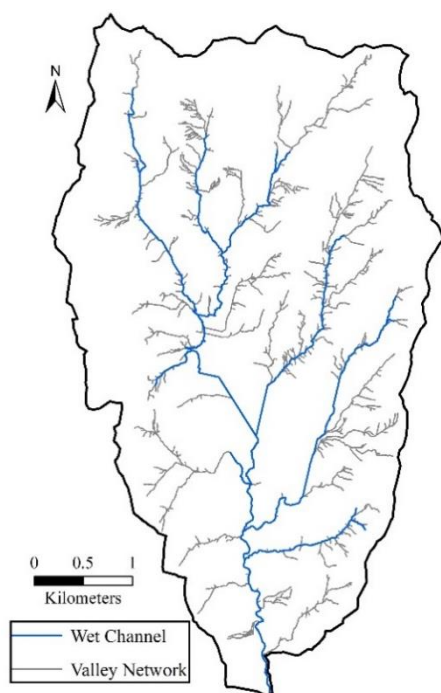
(s) Pennington Creek, OK



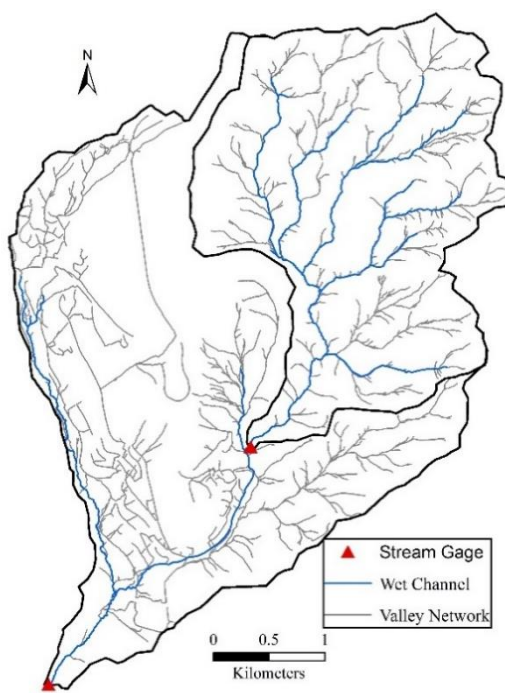
(t) Mill Creek, OK



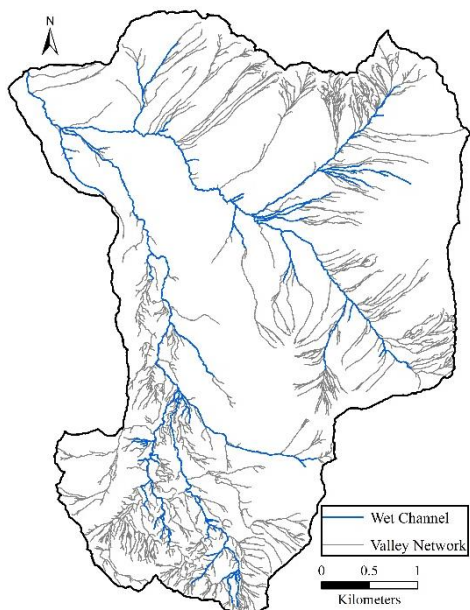
(u) Rock Creek, OK



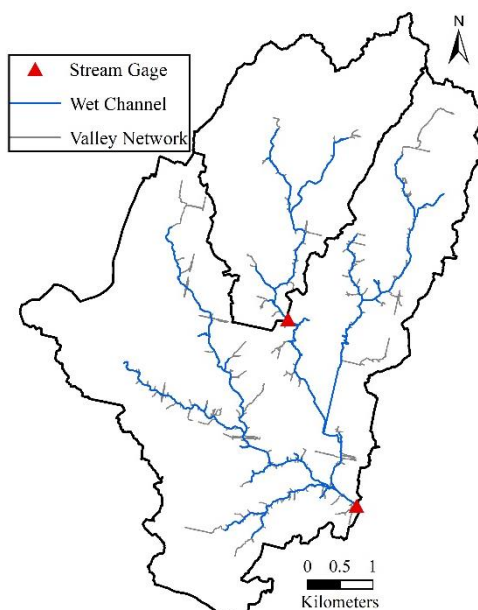
(v) North Criner Creek, OK



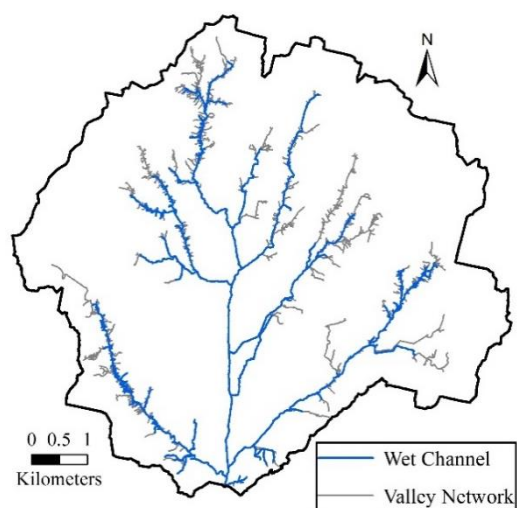
(w) Incline Creek, NV



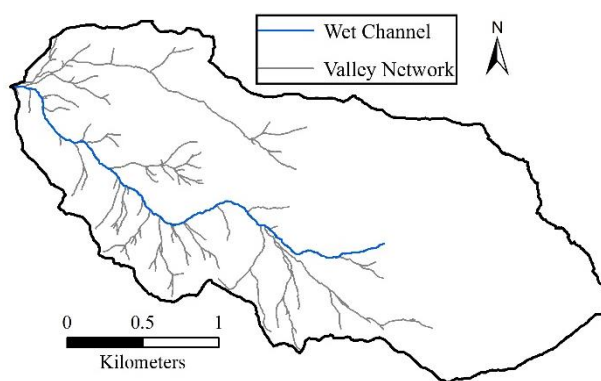
(x) Trout Creek, CA



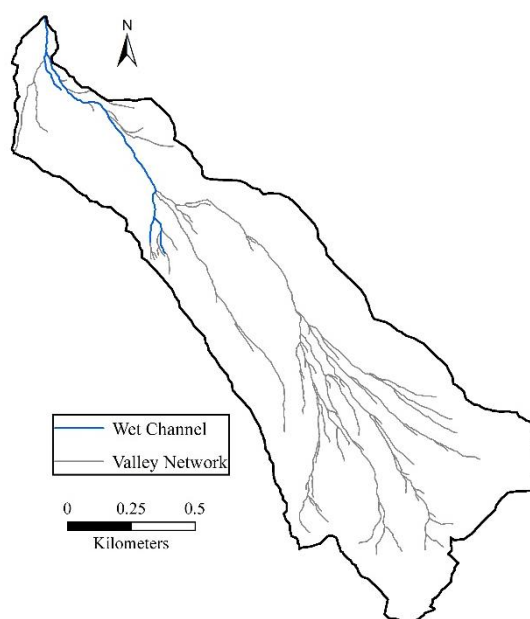
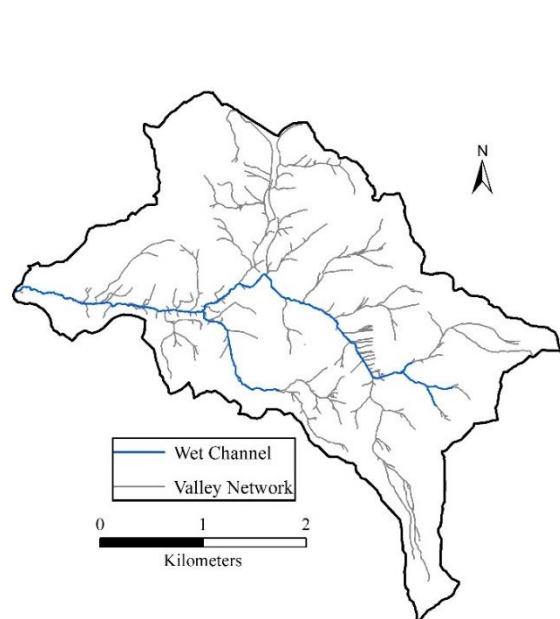
(y) Little Washita River, OK



(z) Lake Creek, OK

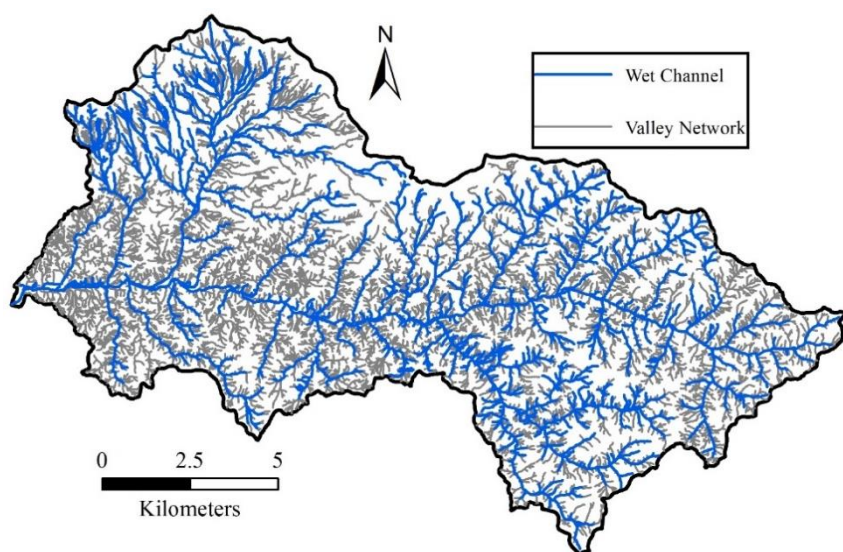


(aa) Logan House Creek, NV



(ab) Glenbrook Creek, NV

(ac) Eagle Rock Creek, NV



(ad) Pine Creek near Clarno, OR

Figure S1. The results for connected wet channel and valley network in study sites.