

Supplementary material

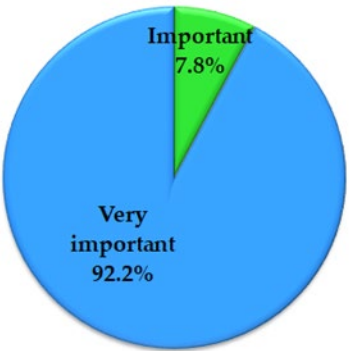


Figure S1. Water importance in human life

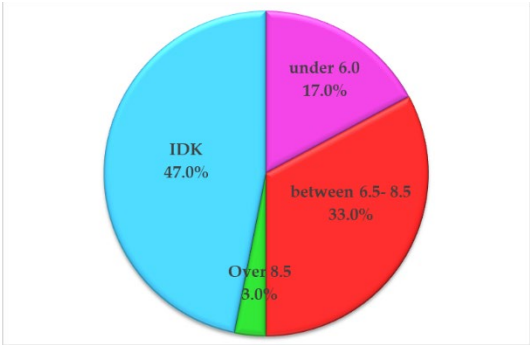


Figure S2. Respondents' knowledge regarding the optimum drinking water pH value

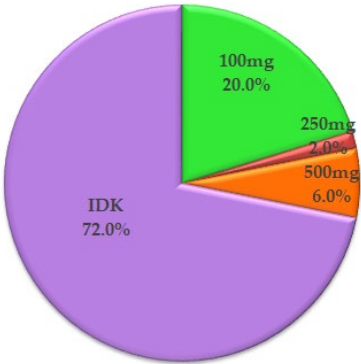
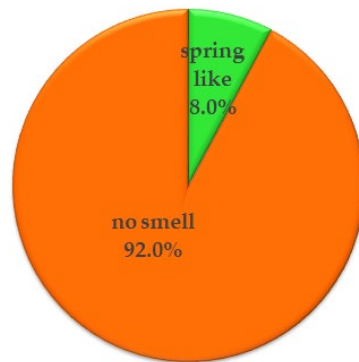
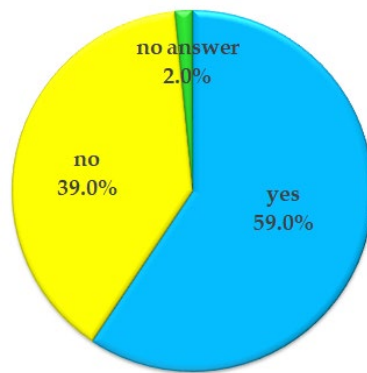


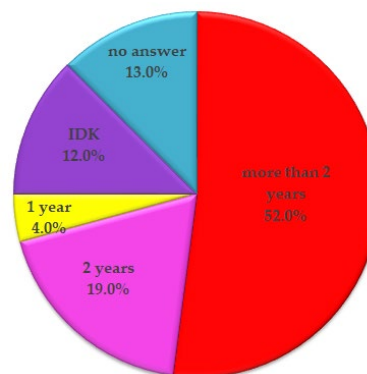
Figure S3. Answers' distribution regarding the respondent's knowledge about the maximum total admitted solids level



**Figure S4.** Appreciation of good water quality smell



**Figure S5.** Households' connection to the central system



**Figure S6.** Householder's connection to the central system over time