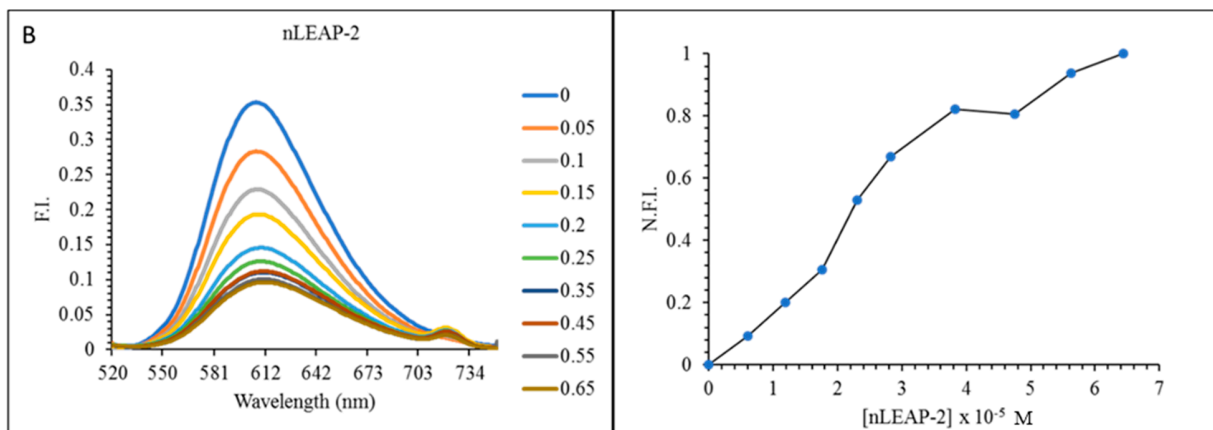
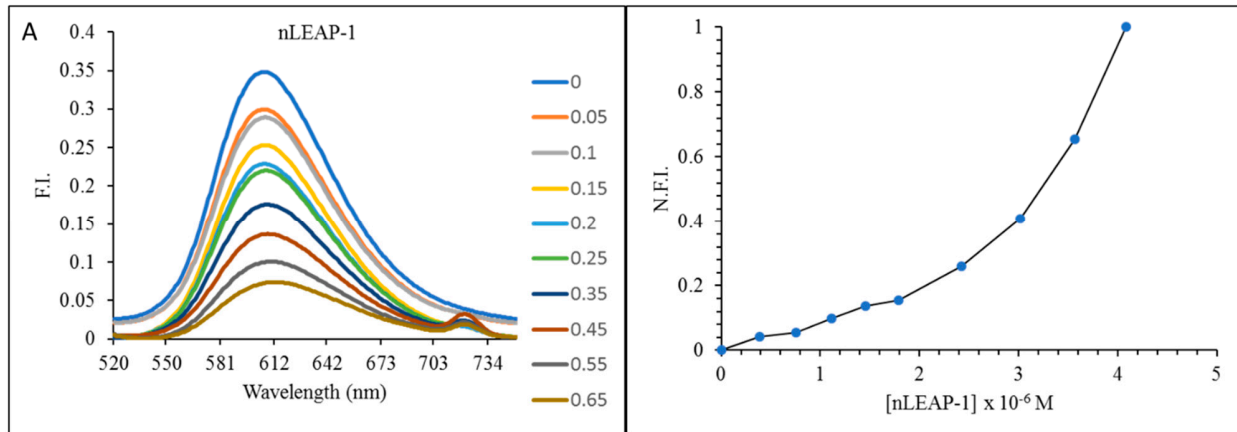


Characterization and Antibacterial Activity of Four Antarctic Liver-expressed Antimicrobial Peptides from Antarctic Fish

Shweta Bharat Borkar, Sondavid K. Nandanwar, Jun Hyuck Lee and Hak Jun Kim



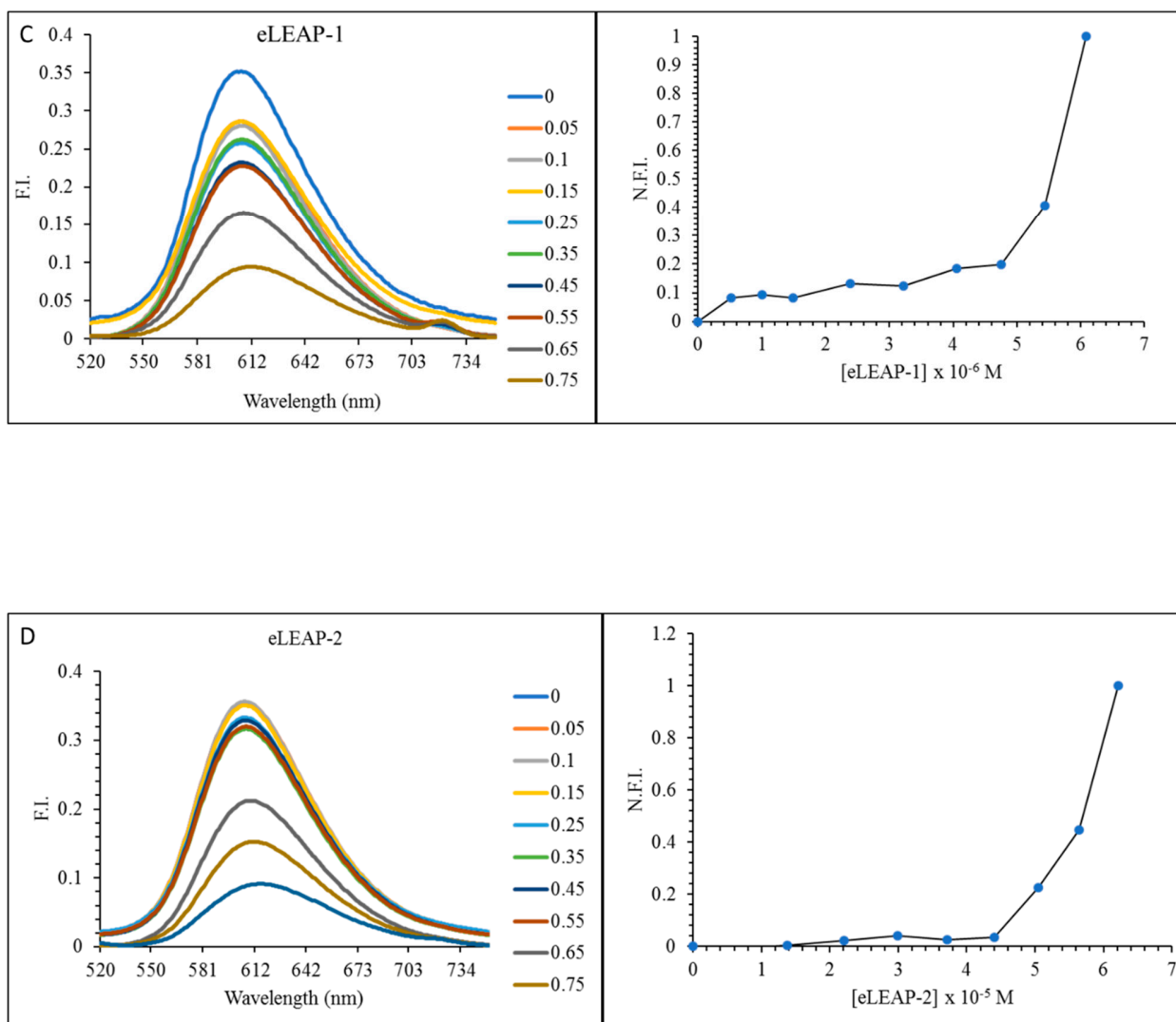


Figure S1. Emission spectra of Ethidium bromide (5 μM) bound to the DNA (20 μM) in the presence of varying concentrations of LEAPs from 0 to 18 μM at the interval of 10 minutes. A) nLEAP-1, B) nLEAP-2, C) eLEAP-1 and D) eLEAP-2. The graph represents the Stern-Volmer plot of normalized fluorescence intensity (N.F.I.) versus concentration of peptide [LEAPs] (M) for the calculation of dissociation constant (K_d). The calculated K_d values of nLEAP-1, nLEAP-2, eLEAP-1, and eLEAP-2 are 4.1, 6.44, 6.08, and 6.21 μM , respectively.