

Supplementary File

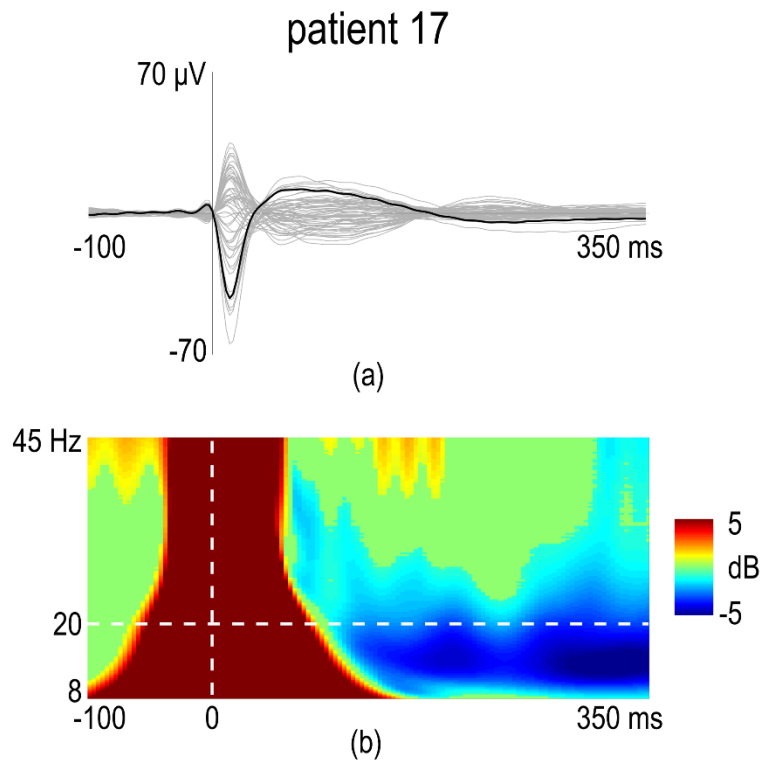


Figure S1. (a) Average transcranial magnetic stimulation (TMS)-evoked potentials (all channels superimposed) recorded in a low-complexity UWS patient. The channel closest to the stimulation site (CP2) is highlighted in black. (b) Event-related spectral perturbation (ERSP) computed for channel CP2 with significance for bootstrap statistics set at $\alpha < 0.05$. Red color indicates a statistically significant power increase, green color indicates absence of any significant modulation of power, blue color represents a significant suppression of power.