

Supplementary Materials for

Nele Busch, Ricarda Schmidt, Anja Hilbert

Executive Functions of Adults with Binge-Eating Disorder: The Role of Weight Status and Psychopathology

Supplementary Table: Linear Regression Analyses Using Clinical Parameters as Predictors and General and Food-Specific Executive Function Measures as Criteria.

Supplementary Figures: Number of Participants Included in Multivariate Analyses of Variance in Measures of General and Food-Specific Executive Functions.

Table S1. Linear Regression Analyses Using Clinical Parameters as Predictors and General and Food-Specific Executive Function Measures as Criteria.

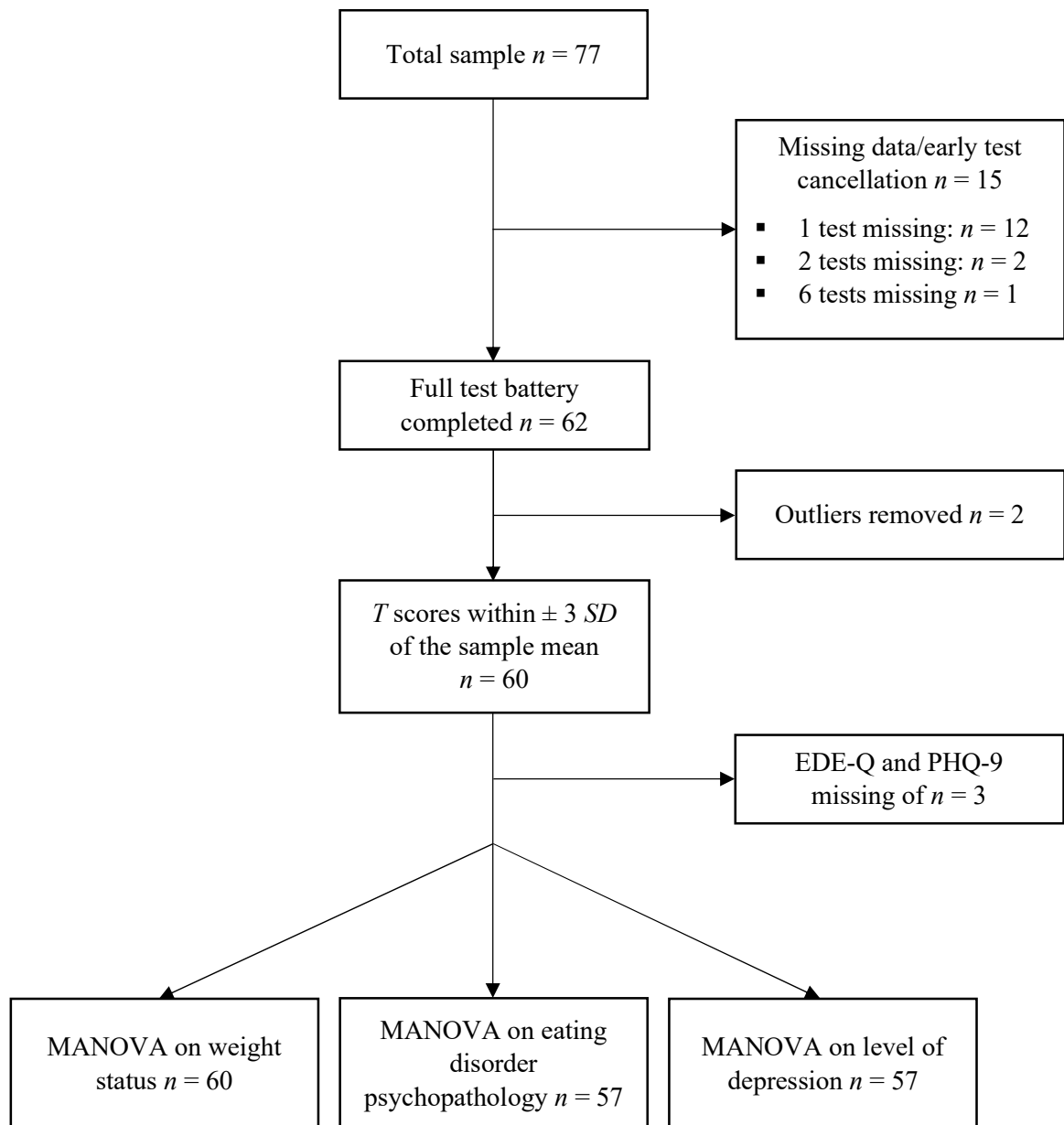
Measures	BMI				PHQ-9 sum score				EDE-Q global score			
	<i>n</i>	β	<i>p</i>	<i>R</i> ²	<i>n</i>	β	<i>p</i>	<i>R</i> ²	<i>n</i>	β	<i>p</i>	<i>R</i> ²
Cards and Lottery Task												
NAD <i>T</i> score	72	0.074	.539	.005	69	−0.088	.472	.008	69	−0.028	.817	.001
Stop-Signal Task												
SSRT <i>T</i> score	70	0.062	.612	.004	67	−0.274	.025	.075	67	−0.190	.124	.036
Go/No-Go Task												
Commission errors <i>T</i> score	76	−0.039	.736	.002	73	−0.138	.244	.019	73	0.028	.817	.001
N-Back Verbal												
Correct responses <i>T</i> score	76	0.058	.621	.003	73	−0.128	.279	.017	73	−0.032	.790	.001
Trail Making Test												
Completion time <i>T</i> score	75	−0.077	.511	.006	72	−0.129	.281	.017	72	−0.154	.198	.024
Tower of London												
Planning score <i>T</i> score	70	−0.127	.294	.016	67	−0.155	.210	.024	67	−0.066	.593	.004
WAFA intrinsic visual												
Mean RT <i>T</i> score	75	0.138	.239	.019	72	−0.226	.056	.051	72	−0.067	.575	.005
Food-specific DPT												
Food attentional bias <i>T</i> score	73	0.078	.510	.006	70	−0.057	.641	.003	70	−0.071	.559	.005
Food-specific AAT												
Approach bias high-caloric <i>T</i> score	62	0.107	.406	.012	61	0.058	.660	.003	61	0.131	.314	.017

Note. AAT = Approach Avoidance Task; BMI = body mass index; DPT = Dot Probe Task; EDE-Q = Eating Disorder Examination-Questionnaire; NAD = number of advantageous decisions; PHQ-9 = Patient Health Questionnaire depression module; RT = reaction time; SSRT = stop-signal reaction time; WAFA = “Perception and Attention Functions Battery Alertness”.

β represents the standardized regression weight.

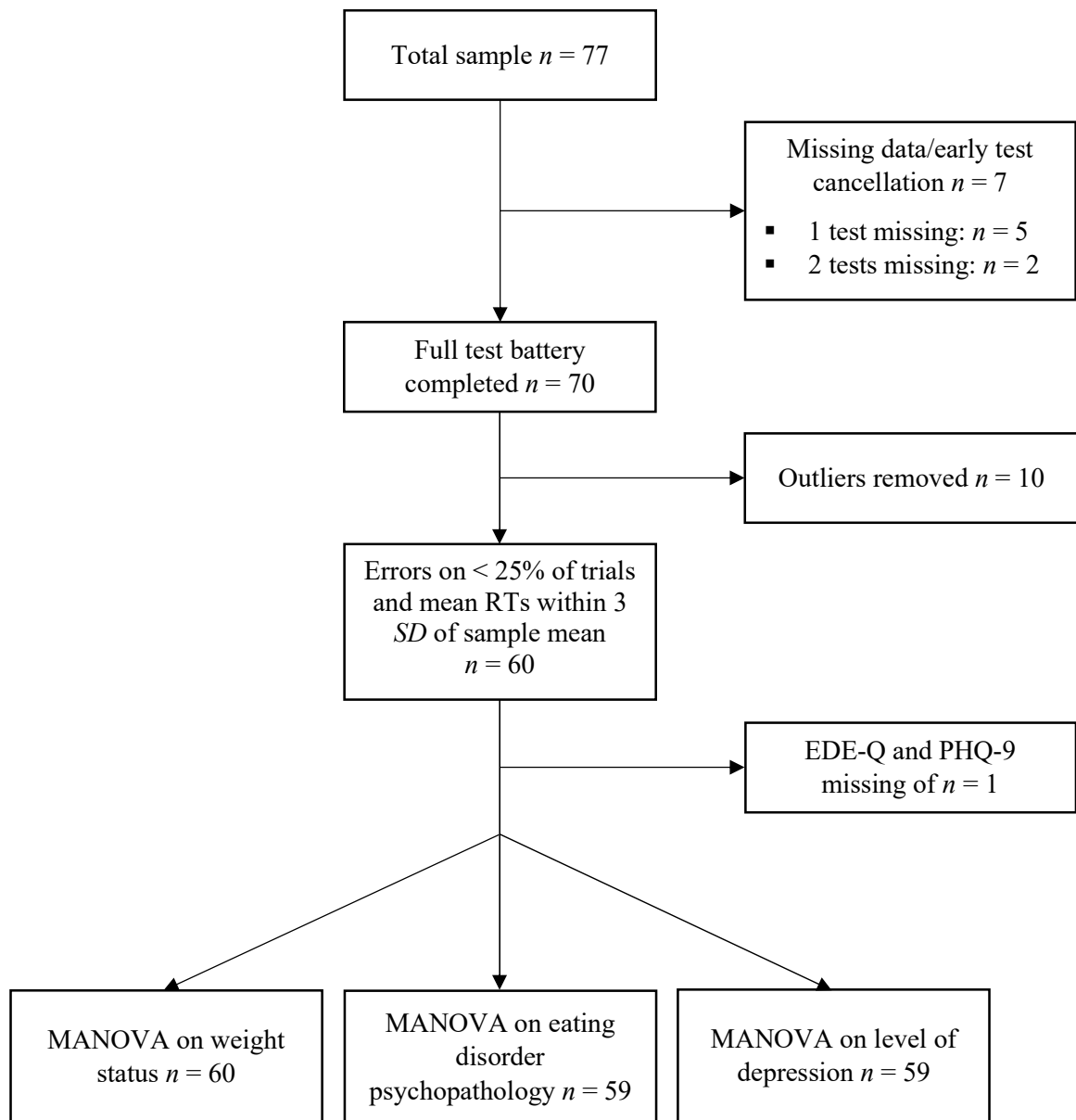
Due to multiple testing, significance level was adjusted to $\alpha = .0056$ using Bonferroni correction.

Figure S1. Number of Participants Included in Multivariate Analyses of Variance in Measures of General Executive Functions.



Note. EDE-Q = Eating Disorder Examination-Questionnaire; MANOVA = multivariate analysis of variance; PHQ-9 = Patient Health Questionnaire depression module.

Figure S2. Number of Participants Included in Multivariate Analyses of Variance in Measures of Food-Specific Executive Functions.



Note. EDE-Q = Eating Disorder Examination-Questionnaire; MANOVA = multivariate analysis of variance; PHQ-9 = Patient Health Questionnaire depression module.