

Supplementary materials

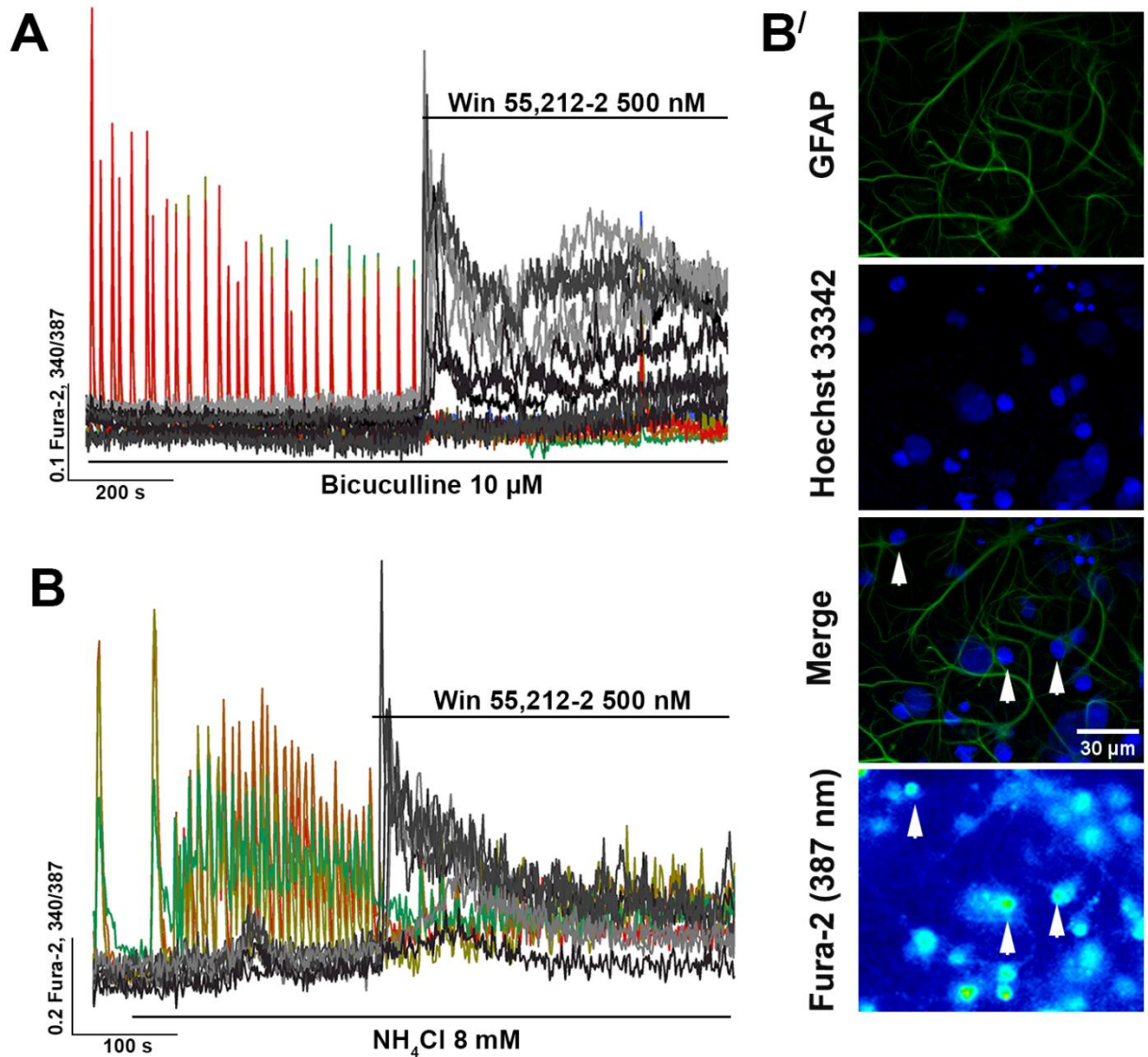


Figure S1. $[Ca^{2+}]_i$ transients in astrocytes (grey curves) occurring in response to WIN 55,212-2 (500 nM) application in the presence of (**A**) bicuculline (10 μ M) and (**B**) NH₄Cl (8 mM). Astrocytes were identified using immunostaining (**B'**) with antibodies against specific marker of astrocytes, glial fibrillar acidic protein (GFAP). Nuclei were stained with Hoechst 33342 (5 μ g/mL). The image of Fura-2 fluorescence (excitation 387 nm) corresponds to the immunostaining images. White arrows demonstrate the astrocytes responding with $[Ca^{2+}]_i$ elevation to WIN 55,212-2 application in the presence of NH₄Cl (panel **B**).