

Figure S1. Example of spectral analysis for an inversion recovery experiment. Spectra are shown as dotted lines and fits as blue lines for an inversion recovery experiment. The recovery delay times are indicated above each panel.

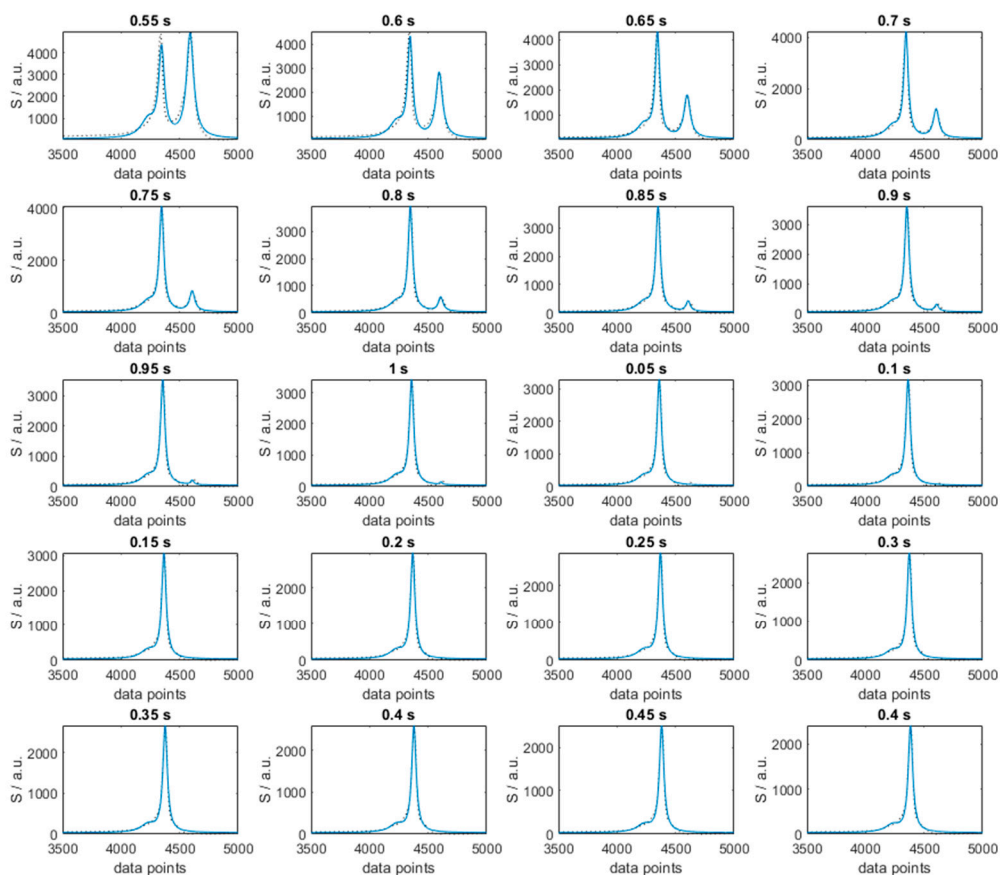


Figure S2. Example of spectral analysis for a CPMG experiment. Spectra are shown as dotted lines and fits as blue lines for an inversion recovery experiment. The recovery delay times are indicated above each panel.