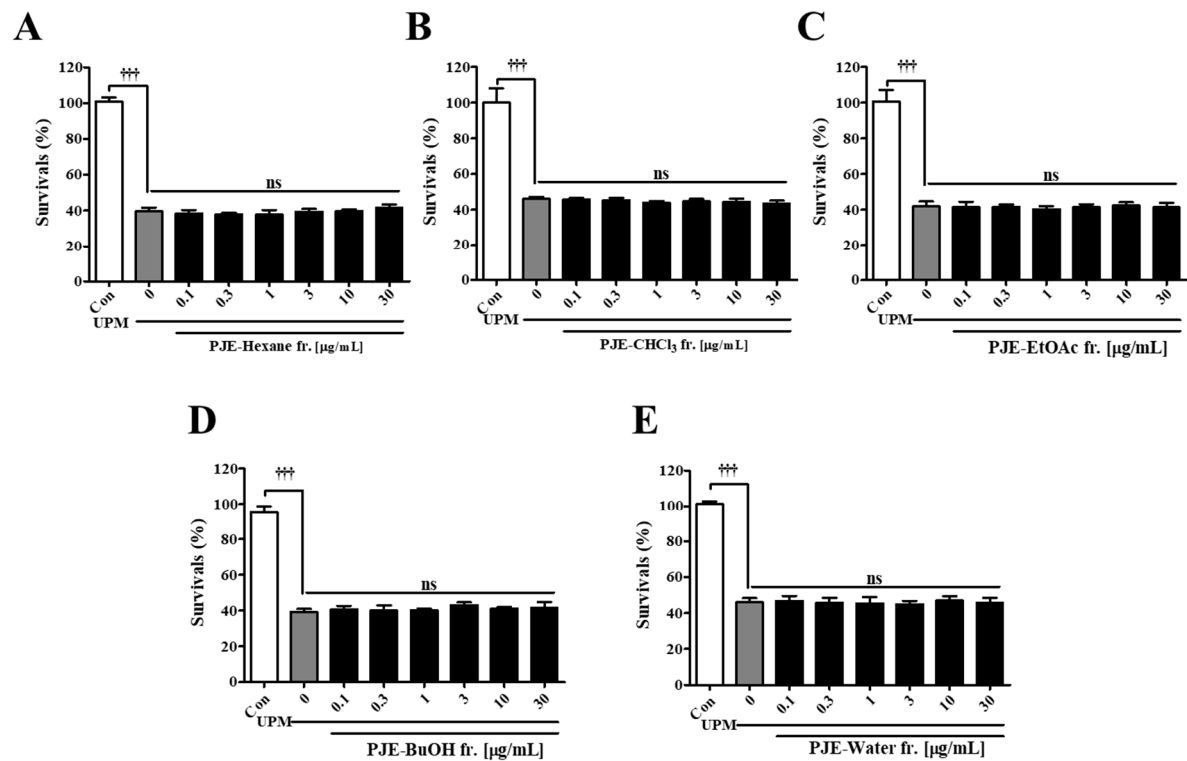
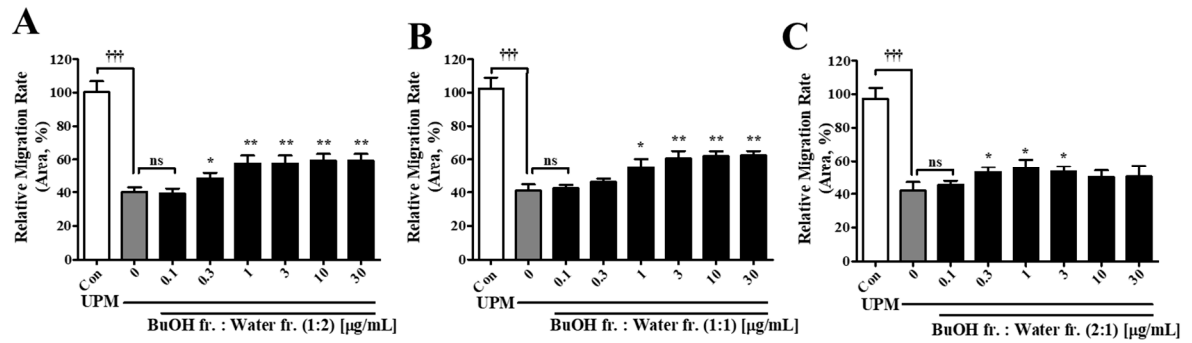


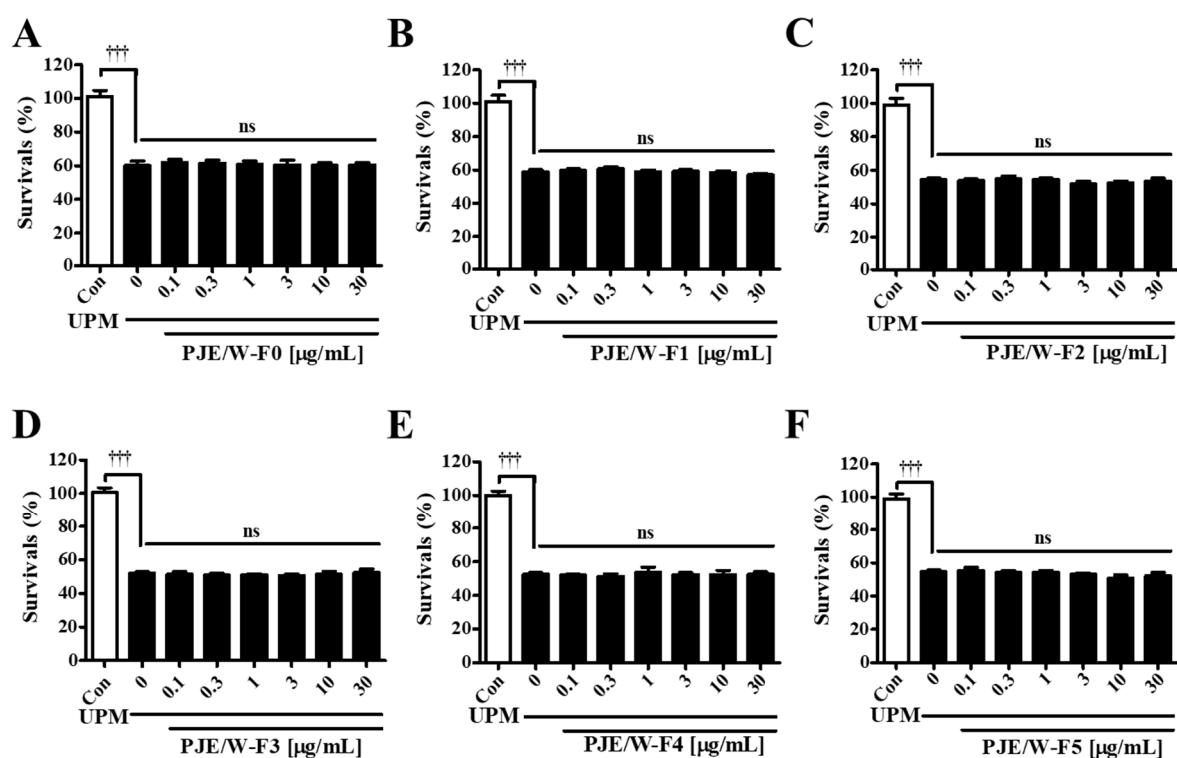
Supplement data



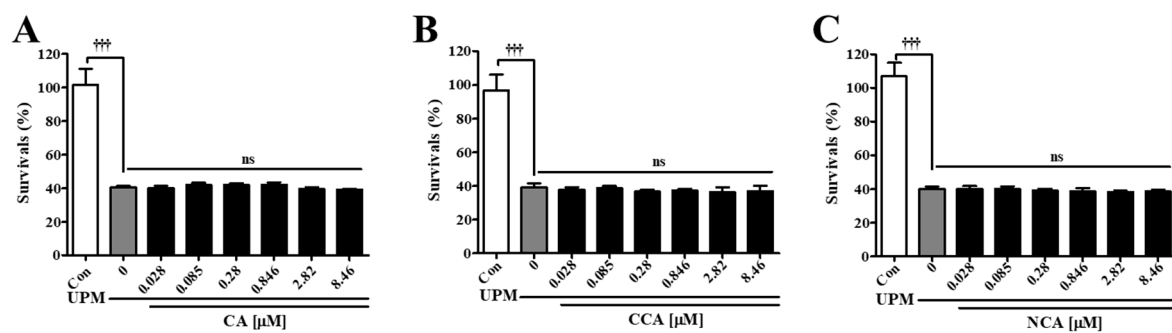
Supplement Figure S1. Effects of PJE solvent fractionation on HCEC survival. Cell survival rates after treatment with the (A) hexane fraction, (B) chloroform fraction, (C) ethyl acetate fraction, (D) butanol fraction, and (E) water fraction are presented as the means \pm SD. $***p < 0.001$ compared to Con; ns, not significant.



Supplement Figure S2. Effects of PJE fraction mixtures (BuOH and water fractions) on HCEC wound healing. The migration activities after treatment with the BuOH and water fraction mixtures at ratios of (A) 1:2, (B) 1:1, and (C) 2:1 are presented as the means \pm SD. $^{\dagger\dagger\dagger}p < 0.001$ compared to Con; $^*p < 0.05$, $^{**}p < 0.01$ compared to 0 $\mu\text{g/mL}$ PJE; ns, not significant.



Supplement Figure S3. Effects of the PJE/Water fractions after HP-20 open column chromatography on the survival of HCECs. Cell survival rates after treatment with (A) F0, (B) F1, (C) F2, (D) F3, (E) F4, and (F) F5 are presented as the means \pm SD. $^{***}p < 0.001$ compared to Con; ns, not significant.



Supplement Figure S4. Effects of the CA isomers on the survival of HCECs. Cell survival rates after treatment with (A) CA, (B) CCA, and (C) NCA are presented as the means \pm SD.

$^{\dagger\dagger\dagger}p < 0.001$ compared to Con; ns, not significant.