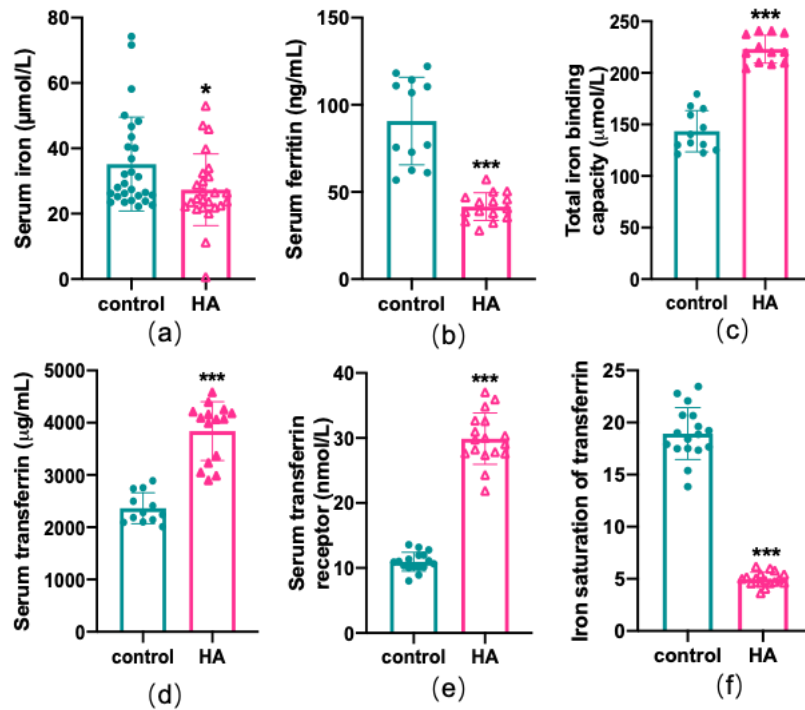


## Supplementary data

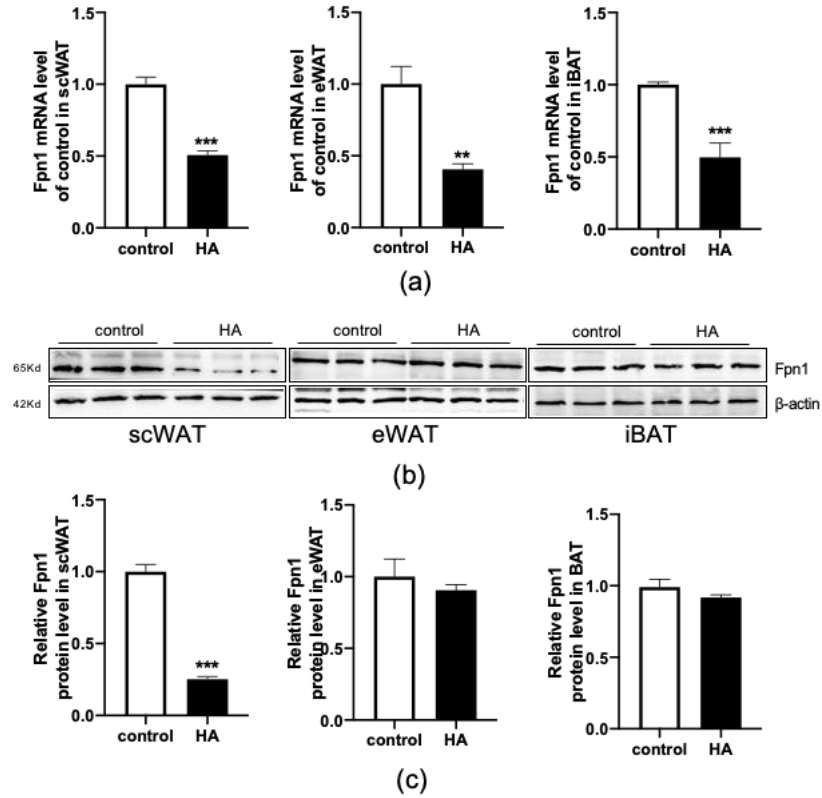
**Table S1. Primers used for quantitative real-time PCR**

Gene	Forward sequence (5'-3')	Reverse sequence (3'-5')
CCL2	ACATTCGGCGGTTGCTCTAG	ACATCCTGTATCCACACGGCAG
CD11c	CTGGATAGCCTTTCTTCTGCTG	GCACACTGTGTCCGAAGTC
CHAC1	CTTGGTGGCTATGACACTAAGG	CCTCGGCAAGCAAGGATCTG
FTH	GATCAACCTGGAGTTGTATGCC	GATATTCTGCCATGCCAGCTTC
FTL	CAGTCTGCACCGTCTCTTCG	GTCATGGCTGATCCGGAGTAG
GPX4	CATGCACGAATTCTCAGCCA	CATATCGGGCATGCAGATCG
HMOX1	TGACACCTGAGGTCAAGCAC	TCTCTGCAGGGGCAGTATCT
IL1 $\beta$	AGCCCATCCTCTGTCACTCA	TGTCGTTGCTTGGTTCTCCT
IL6	CTCTGCAAGAGACTTCCATCCA	CGTGGTTGTCACCAGCATCA
iNOS	GGAGTGACGGCAAACATGACT	TCGATGCACAACCTGGGTGAAC
SLC7A11	ATCGGGACTGCTAATGAGAATT	CTATTTTACCACCATCAGTGCG
TFR	TGATTGTTAGAGCAGGGGAAA	ATGACTGAGATGGCGGAAAC
TNF $\alpha$	TCCCAGGTTCTCTTCAAGGGA	GGTGAGGAGCACGTAGTCGG
18S rRNA	GCCCTCCAATGGATCCTCGTTA	GAAACGGCTACCACATCCAAGG



**Figure S1.** Serum iron parameters are altered during high-altitude hypoxia exposure.

Data are presented as the mean  $\pm$  SEM. \*  $p < 0.05$ , \*\*  $p < 0.01$ , and \*\*\*  $p < 0.001$ , versus control.



**Figure S2.** Changes in the mRNA and protein expressions of Fpn1. A RT-qPCR of Fpn1 genes after HA exposure. B Fpn1 protein bands after ECL imaging. C Quantification of the bands, normalized to  $\beta$ -actin. The values are representative of three independent experiments. Data are presented as the mean  $\pm$  SEM. \*\*  $p < 0.01$ , \*\*\*  $p < 0.001$ , versus control.