

Supplementary Materials

Article

Green extraction of polyphenols from waste bentonite to produce functional antioxidant excipients for cosmetic and pharmaceutical purposes: a waste-to-market approach

Giulia Di Prima¹, Elena Belfiore², Martina Migliore¹, Amalia Giulia Scarpaci¹, Giuseppe Angellotti², Ignazio Restivo¹, Mario Allegra¹, Vincenzo Arizza¹, and Viviana De Caro^{1,3*}

Data reported as supplementary material:

- **Figure S1:** A) Residual DPPH (%) as a function of incubation time when evaluating standard GA solutions at concentrations of: 0.050 mg mL⁻¹ (black), 0.035 mg mL⁻¹ (red), 0.025 mg mL⁻¹ (blue), 0.020 mg mL⁻¹ (pink) and 0.015 mg mL⁻¹ (green). B) Data in the semi-logarithmic scale and linear curve fitting (linearity range: 20-60 min) (n=3)
- **Figure S2:** Comparative antioxidant behaviors of the freshly prepared (black and red) and 6-months-old (green) extracts: residual DPPH (%) as a function of incubation time when evaluating the A) GW, B) GD, C) PW and D) PD extracts (n=6)
- **Figure S3:** 3D plot image of the PW extract: elution from 0 to 27 min.

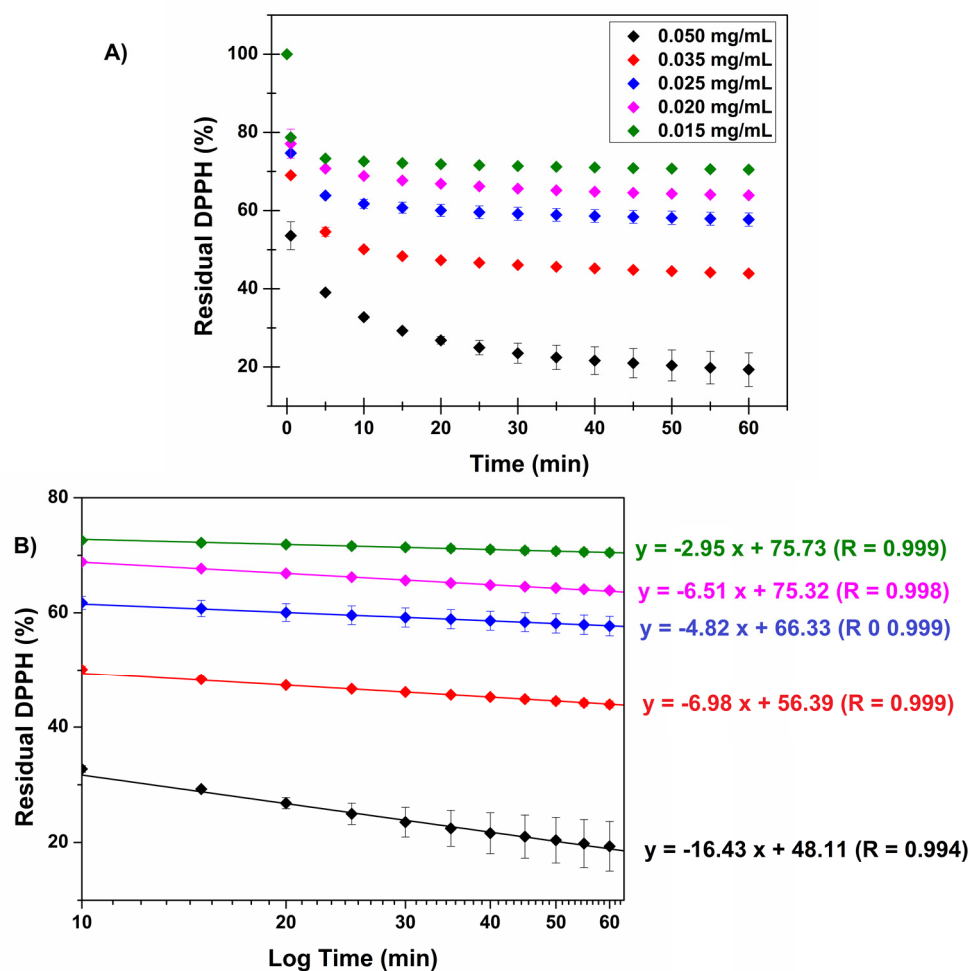


Figure S1. A) Residual DPPH (%) as a function of incubation time when evaluating standard GA solutions at concentrations of: 0.050 mg mL⁻¹ (black), 0.035 mg mL⁻¹ (red), 0.025 mg mL⁻¹ (blue), 0.020 mg mL⁻¹ (pink) and 0.015 mg mL⁻¹ (green). B) Data in the semi-logarithmic scale and linear curve fitting (linearity range: 20-60 min) (n=3)

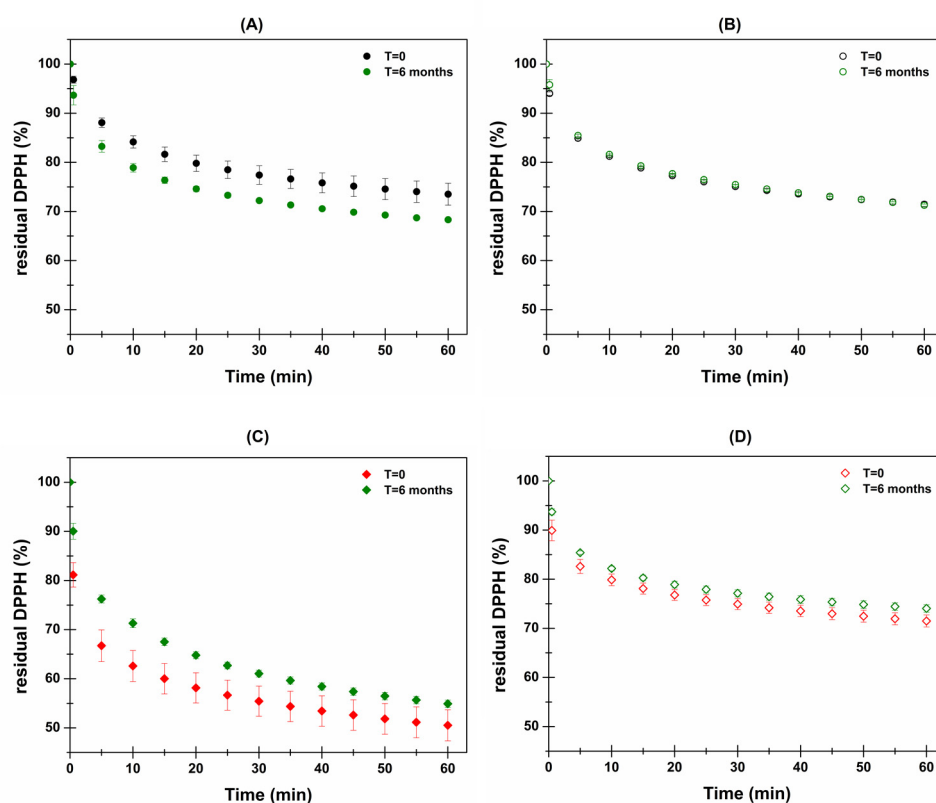


Figure S2. Comparative antioxidant behaviors of the freshly prepared (black and red) and 6-months-old (green) extracts: residual DPPH (%) as a function of incubation time when evaluating the A) GW, B) GD, C) PW and D) PD extracts (n=6)

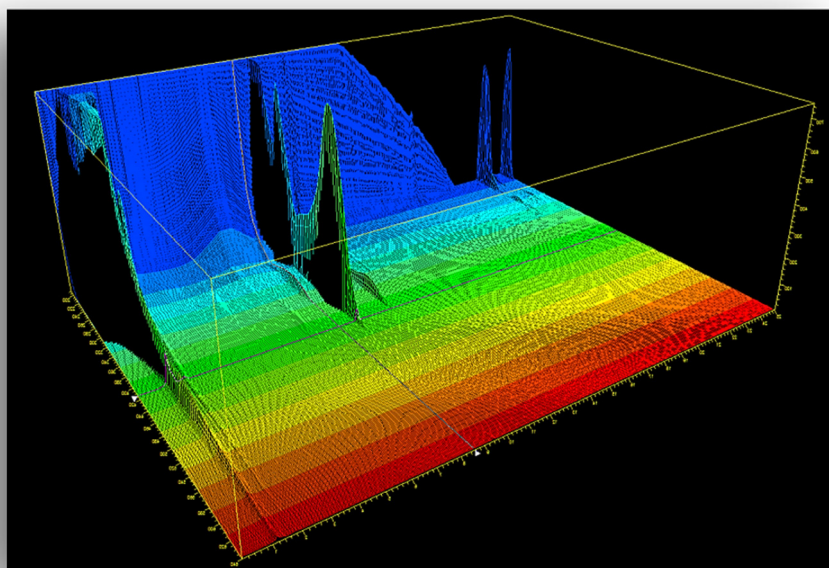


Figure S3: 3D image of PW extract elution from 0 to 27 min.