

Figure S1. Body weight, blood glucose level, fat adipose weight (epididymal white adipose tissue [eWat]), and leptin concentration in high-fat diet-induced obese mice compared to normal diet non-obese mice. All assays were performed after a 12-week feeding of high-fat diet or normal diet. The leptin concentration in lung tissue was analyzed using enzyme-linked immunosorbent assay. Data were presented as means \pm standard deviations. ND: the normal diet non-obese group. DIO: the high-fat diet-induced obese group. * $p < 0.05$ the DIO group versus the ND group.

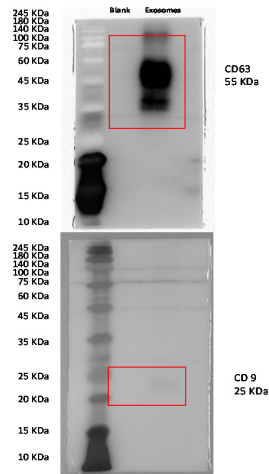
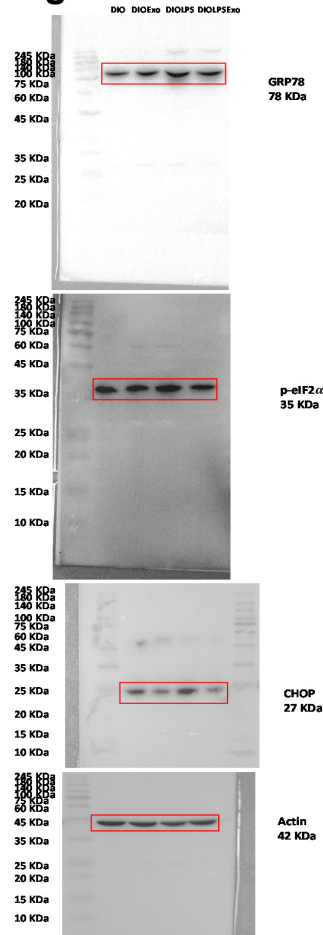
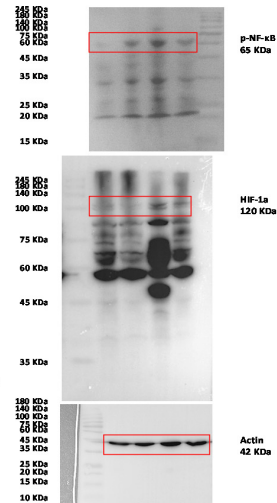
Fig 1**Fig 4****Fig 5**

Figure S2. Uncropped representative gel photography of immunoblotting assay, presented in Figure 1, Figure 4, and Figure 5. GRP78: glucose-regulated protein 78. p-eIF2 α : phosphorylated eukaryotic initiation factor 2 α . CHOP: C/EBP homologous protein. p-NF- κ B: phosphorylated nuclear factor- κ B. HIF-1 α : hypoxia-inducible factor-1 α .