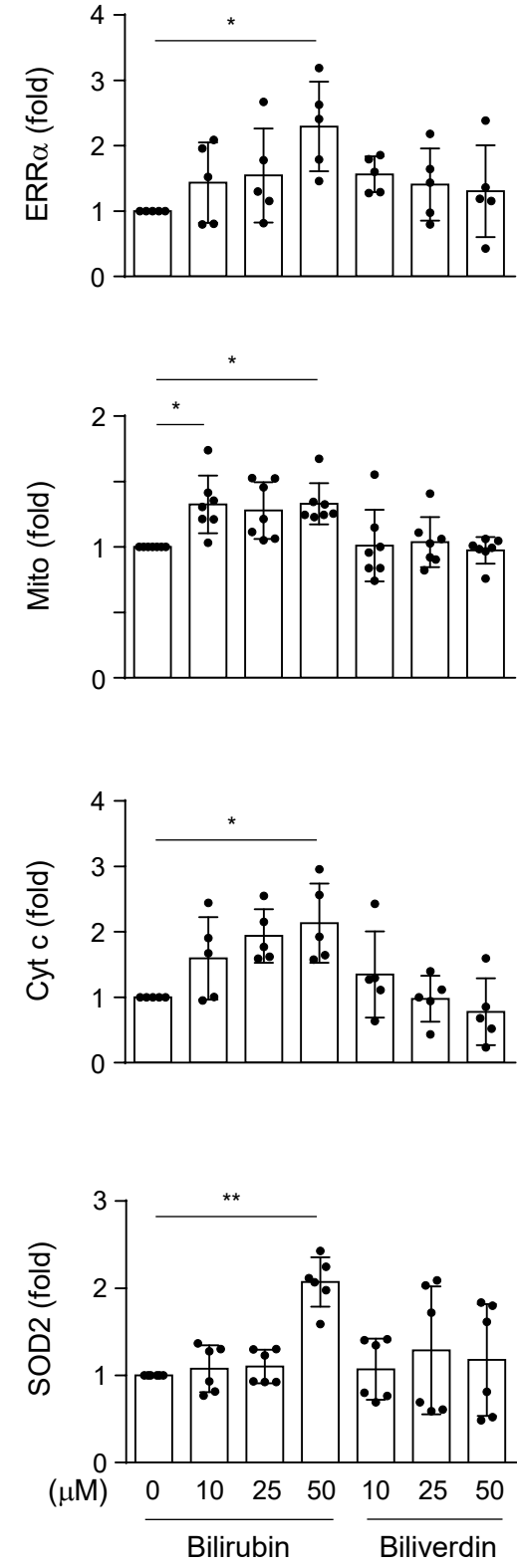
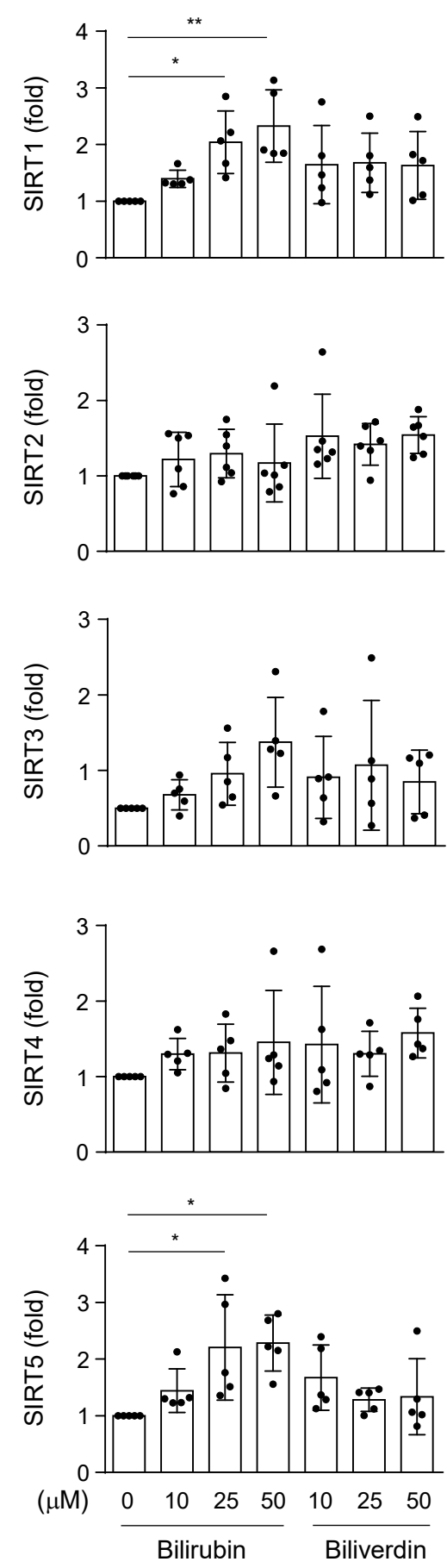


Supplementary Figure S1

a

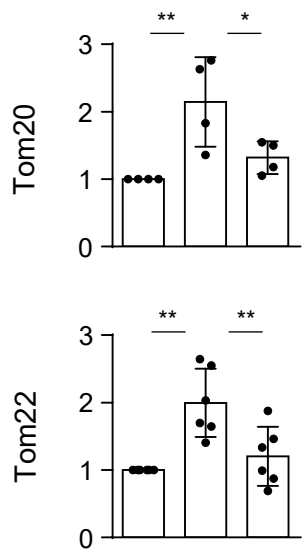
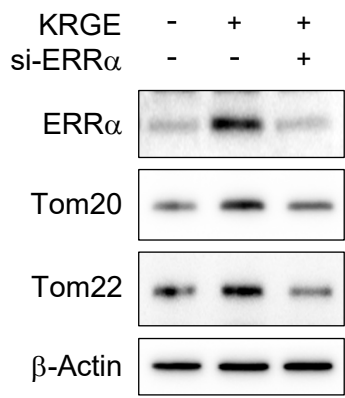


b



Supplementary Figure S1. (a-b) Astrocytes were treated with 50 μM bilirubin or 50 μM biliverdin for 4 h and bands from western blot were analyzed (($n = 5-7$). * $P < 0.05$; ** $P < 0.01$).

Supplementary Figure S2



Supplementary Figure S2.
Astrocytes were transfected with ERR α siRNA, then treated with KRGE for 24 h. Bands from western blot analysis were quantified ($n = 4$ or 6). * $P < 0.05$; ** $P < 0.01$.