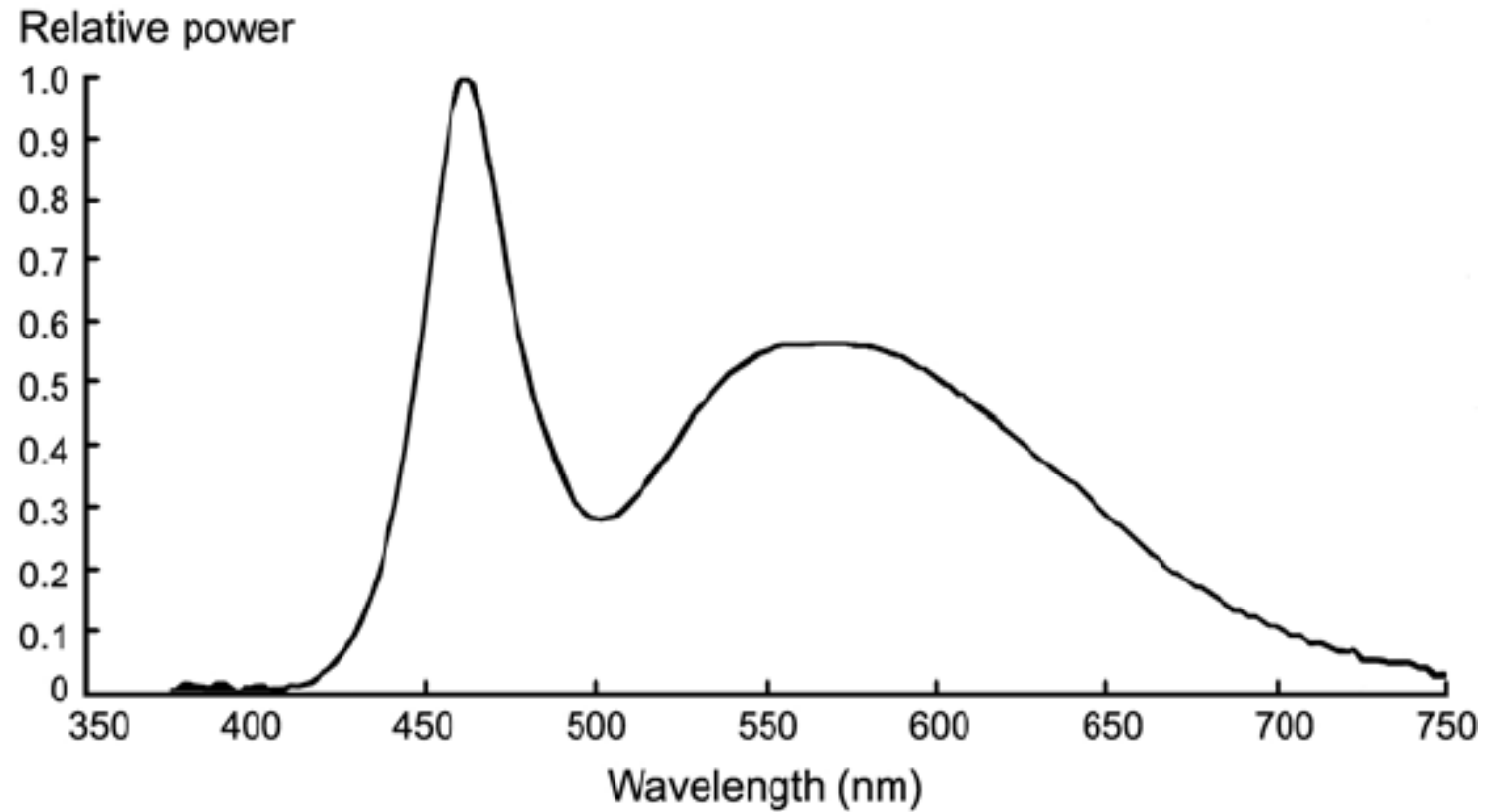
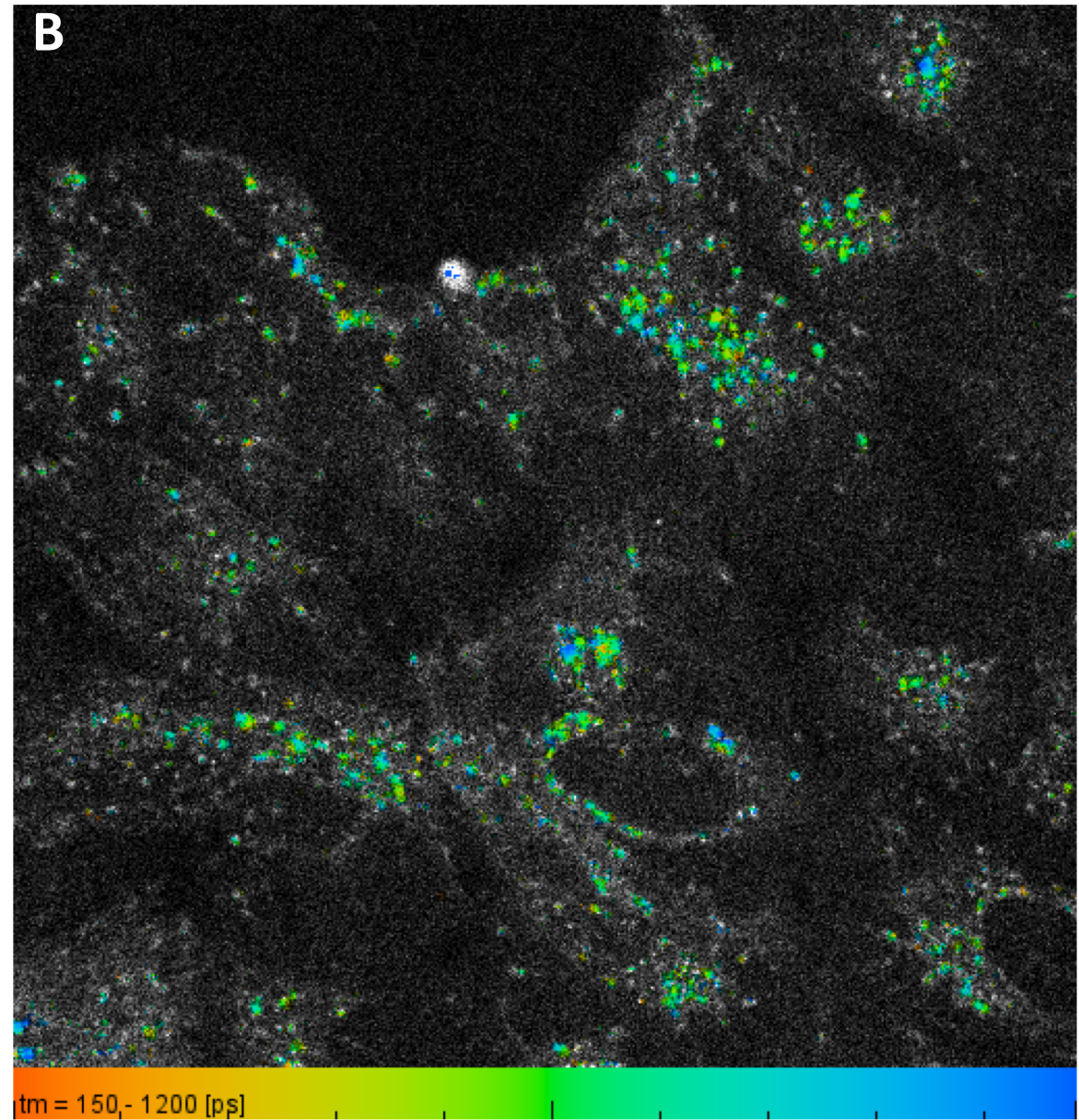
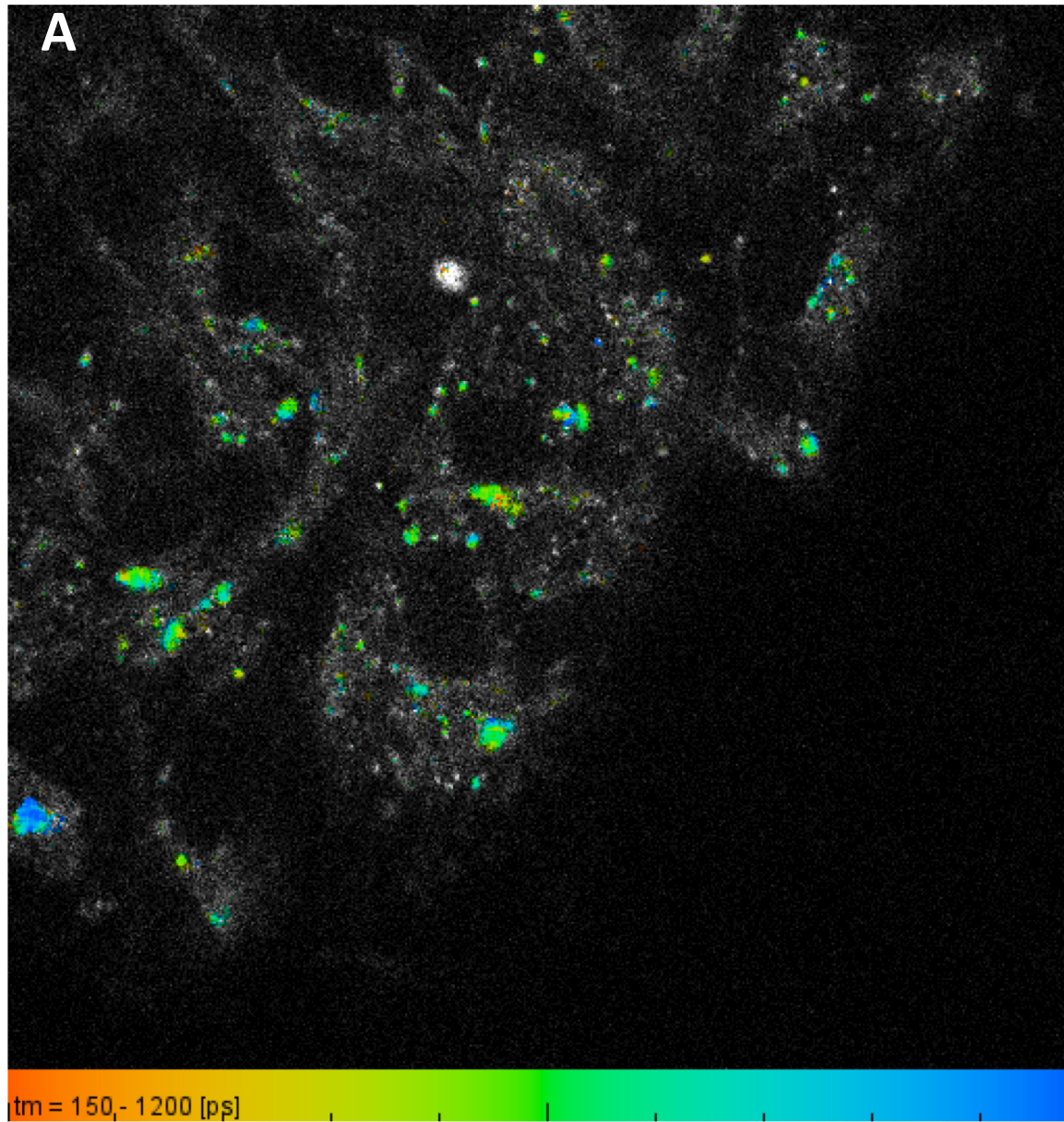




- B**
- Irradiation exposure time: 18 hours
 - Light intensity 0.28-0.30 mW/cm²



Supplementary Figure S1. A – photograph of the diode light lamp inside the plastic container, which was put into CO₂-incubator; B – spectrum of the diode lamp light, which was used in the experiments.



Supplementary Figure S2. Autofluorescence FLIM images of intact ARPE-19 cells: A – non-irradiated; B – irradiated with white diode lamp light. Brightness and contrast greatly (1000 times) increased.