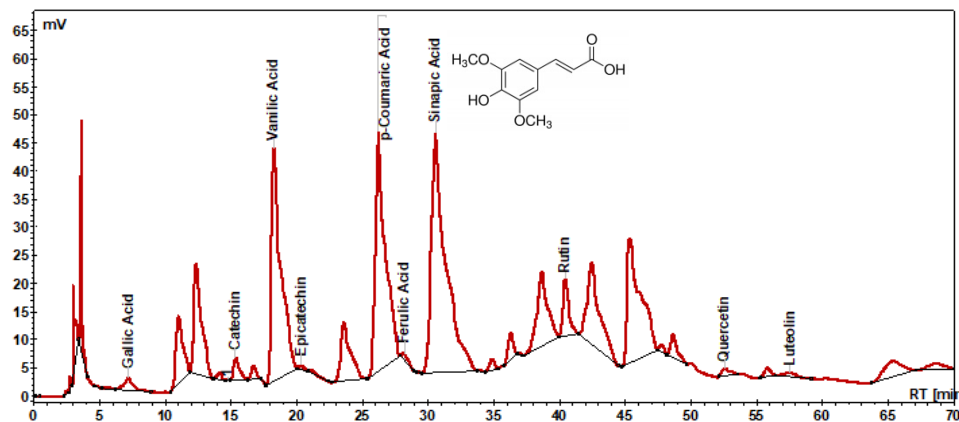
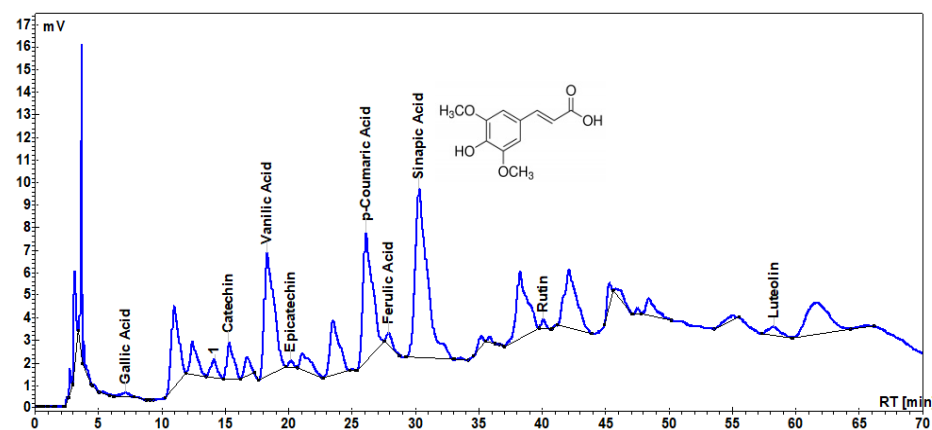


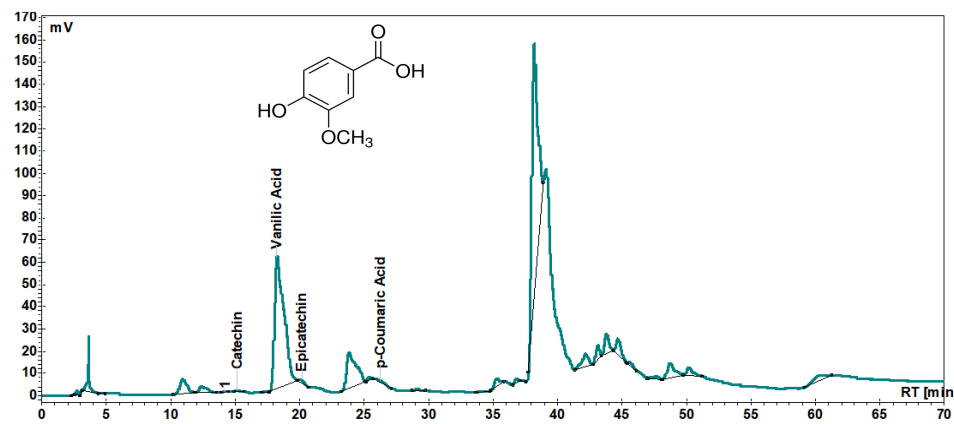
Antibacterial and Phytochemical screening of *Artemisia* species



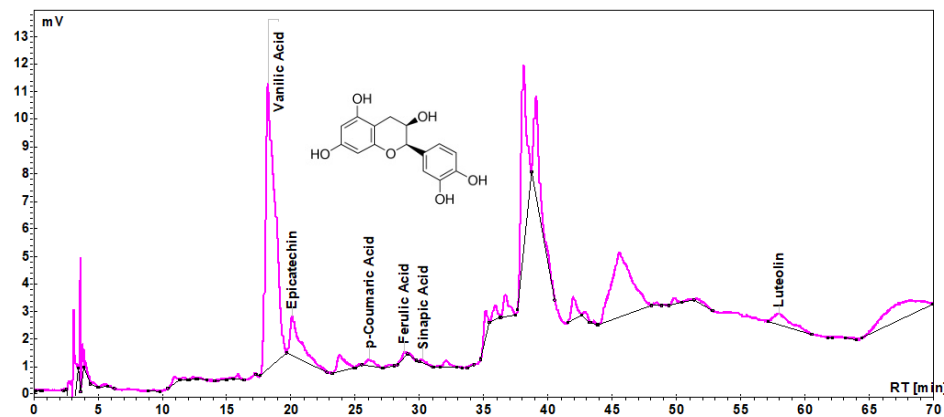
a. AnL



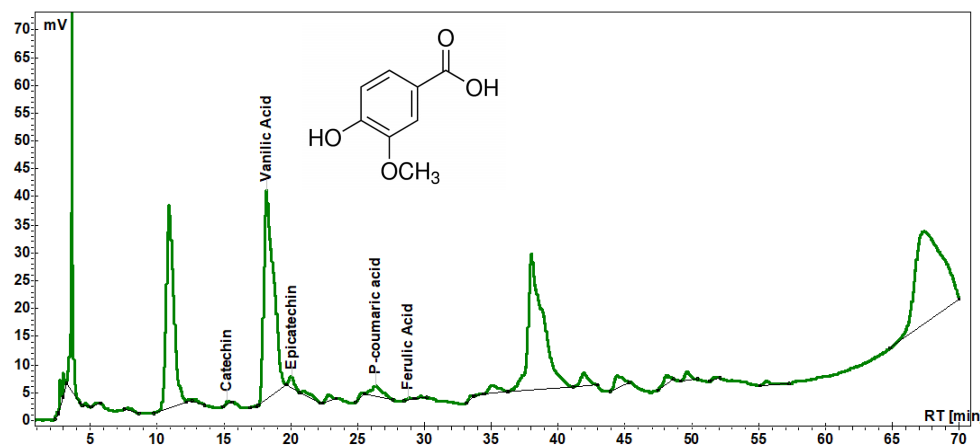
b. AnS



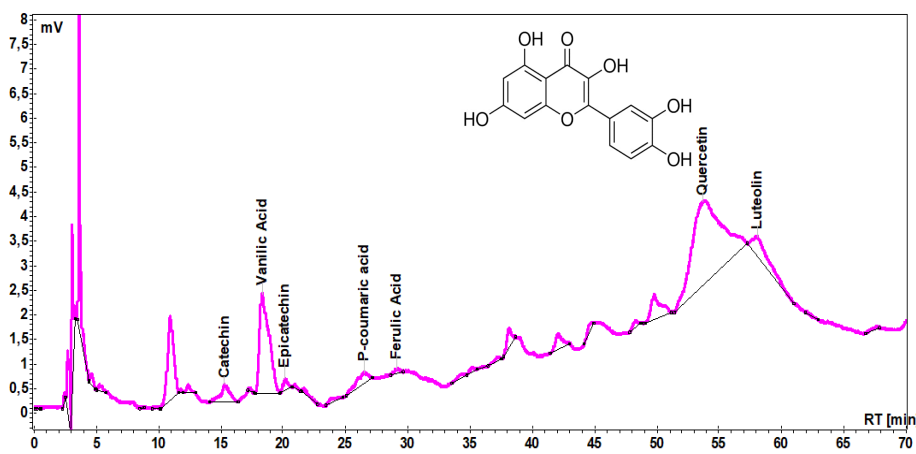
c. AbL2



d. AbS2



e. AbL1



f. AbS1

Figure S1. HPLC chromatograms of the polyphenols content in wormwood ethanolic aerial parts. (AnL - *Artemisia annua* L. leaf, AnS - *Artemisia annua* L. stem, AbL2 - *Artemisia absinthium* L. leaf, AbS2 - *Artemisia absinthium* L. stem, AbL1 - *Artemisia absinthium* L. leaf, AbS1 - *Artemisia absinthium* L. stem)