

Figure S1. Lee et al.

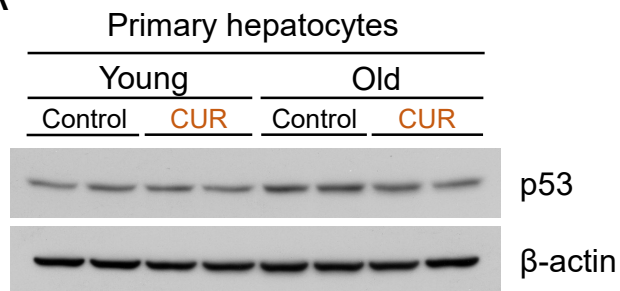
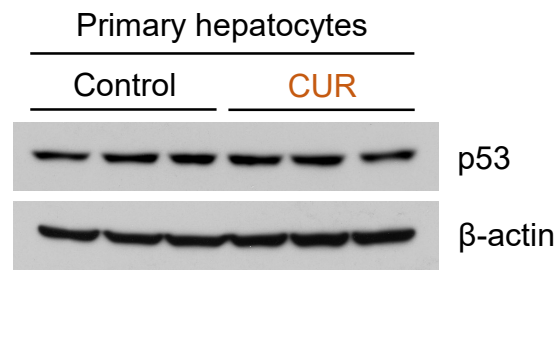
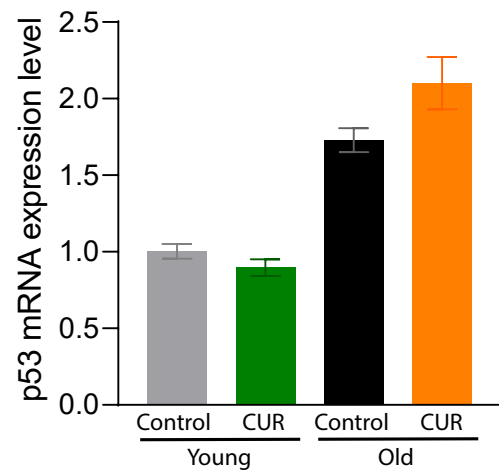
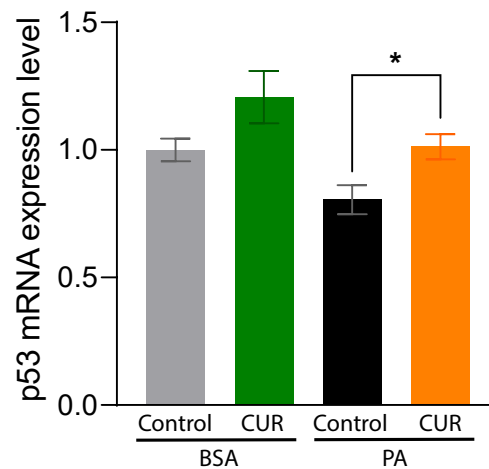
**A****B****C****D**

Figure S2. Lee et al.

**Table S1.** Oligonucleotides for *real-time* RT-PCR used in this study.

| Origin              | Target            | 5' – 3' | Sequence                         | Gene ID |
|---------------------|-------------------|---------|----------------------------------|---------|
| <i>Mus musculus</i> | GPx1              | Forward | 5'-CGGTTTCCCGTGCAATC-3'          | 14775   |
|                     |                   | Reverse | 5'-GAGGGAATTCAGAATCTCTTCAT-3'    |         |
|                     | GPx2              | Forward | 5'-TGTGGCGTCACTCTGAGGAA-3'       | 14776   |
|                     |                   | Reverse | 5'-GAAGCGACATTGCAGCTCAT-3'       |         |
|                     | GPx3              | Forward | 5'-AACTCGGAGATACTCCCCAGTCT-3'    | 14778   |
|                     |                   | Reverse | 5'-GCTGGAAATTAGGCACAAAGC-3'      |         |
|                     | GPx4              | Forward | 5'-ACCCACTGTGGAAATGGATGA-3'      | 625249  |
|                     |                   | Reverse | 5'-CTCTATCACCTGGGGCTCCTC-3'      |         |
|                     | HMOX1             | Forward | 5'-TCAGGTGTCCAGAGAAGGCTTT-3'     | 15368   |
|                     |                   | Reverse | 5'-TCTTCCAGGGCCGTGTAGAT -3'      |         |
|                     | Txn1              | Forward | 5'-GTGGTGTTTCCTTGAAGTGGAT-3'     | 22166   |
|                     |                   | Reverse | 5'-GGCATGCATTTGACTTCACAGT-3'     |         |
|                     | p53               | Forward | 5'-GCTTCTCCGAAGACTGGATGA-3'      | 22059   |
|                     |                   | Reverse | 5'-GAGTTTCCATAAGCCTGAAAATGTC -3' |         |
|                     | Cxcl2             | Forward | 5'-CCCAGACAGAAGTCATAGCCAC-3'     | 20310   |
|                     |                   | Reverse | 5'-TGGTTCTTCCGTTGAGGGAC-3'       |         |
|                     | Cxcl10            | Forward | 5'-CGCTGCAACTGCATCCATATCG-3'     | 15945   |
|                     |                   | Reverse | 5'-CCGGATTCAGACATCTCTGCTC-3'     |         |
|                     | IL-6              | Forward | 5'-TGAGAAAAGAGTTGTGCAATGG-3'     | 16193   |
|                     |                   | Reverse | 5'-GGTACTCCAGAAGACCAGAGG-3'      |         |
|                     | FoxO3             | Forward | 5'-CTCCATCCGGCACAACCT-3'         | 56484   |
|                     |                   | Reverse | 5'-TTGCCCCTCCCTTCATTC-3'         |         |
|                     | $\beta$ -actin    | Forward | 5'-TACCACCATGTACCCAGGCA-3'       | 11461   |
|                     |                   | Reverse | 5'-CTCAGGAGGAGCAATGATCCTGAT-3'   |         |
|                     | 18S Ribosomal RNA | Forward | 5'-CGATCCGAGGGCCTCATCA-3'        | 19791   |
|                     |                   | Reverse | 5'-AGTCCCTGCCCTTTGTACACA-3'      |         |

GPx, glutathione peroxidase; HMOX, heme oxygenase; Txn, thioredoxin; Cxcl, chemokine (C-X-C motif) ligand; IL, interleukin; FoxO3, Forkhead box O3.

**Table S2.** Abbreviations mentioned in this article.

| Abbreviation   | Meaning   |
|----------------|---|
| AMP            | Adenosine monophosphate                                       |
| ANOVA          | Analysis of variance  |
| AUC            | Area under the curve  |
| BCA            | Bicinchoninic acid  |
| CUR            | Curcumin  |
| Cxcl           | Chemokine (C-X-C motif) ligand                                |
| DEG            | Differentially expressed genes                                |
| DIO            | Diet-induced obesity  |
| ERK            | Extracellular signal-regulated kinase                         |
| FER            | Food efficiency ratio   |
| FOX            | Forkhead box  |
| FPKM           | Fragments per kilobase of transcript per million mapped reads |
| GEO            | Gene Expression Omnibus                                       |
| GMP            | Guanosine monophosphate                                       |
| GO             | Gene Ontology   |
| GPx            | Glutathione peroxidase  |
| GTT            | Glucose tolerance test  |
| HDAC1          | Histone deacetylase 1   |
| HFHSD          | High-fat high-sugar diet                                      |
| HMOX1          | Heme oxygenase 1  |
| IL             | Interleukin   |
| IPA            | Ingenuity Pathway Analysis                                    |
| IRS            | Insulin receptor substrate                                    |
| ITT            | Insulin tolerance test  |
| JNK            | c-Jun N-terminal kinase                                       |
| KEGG           | Kyoto Encyclopedia of Genes and Genomes                       |
| MAPK           | Mitogen-activated protein kinase                              |
| MGI            | Mouse Genome Informatics                                      |
| MK             | MAP kinase-activated protein kinase                           |
| NCD            | Normal chow diet  |
| NF- $\kappa$ B | Nuclear factor kappa B  |
| PVDF           | polyvinylidene fluoride                                       |
| RT-PCR         | Reverse-transcription polymerase chain reaction               |
| SASP           | Senescence-associated secretory phenotype                     |
| SDS-PAGE       | Sodium dodecyl sulfate–polyacrylamide gel electrophoresis     |
| SEM            | Standard error of the mean                                    |
| STING          | Stimulator of interferon genes                                |
| Txn            | Thioredoxin   |