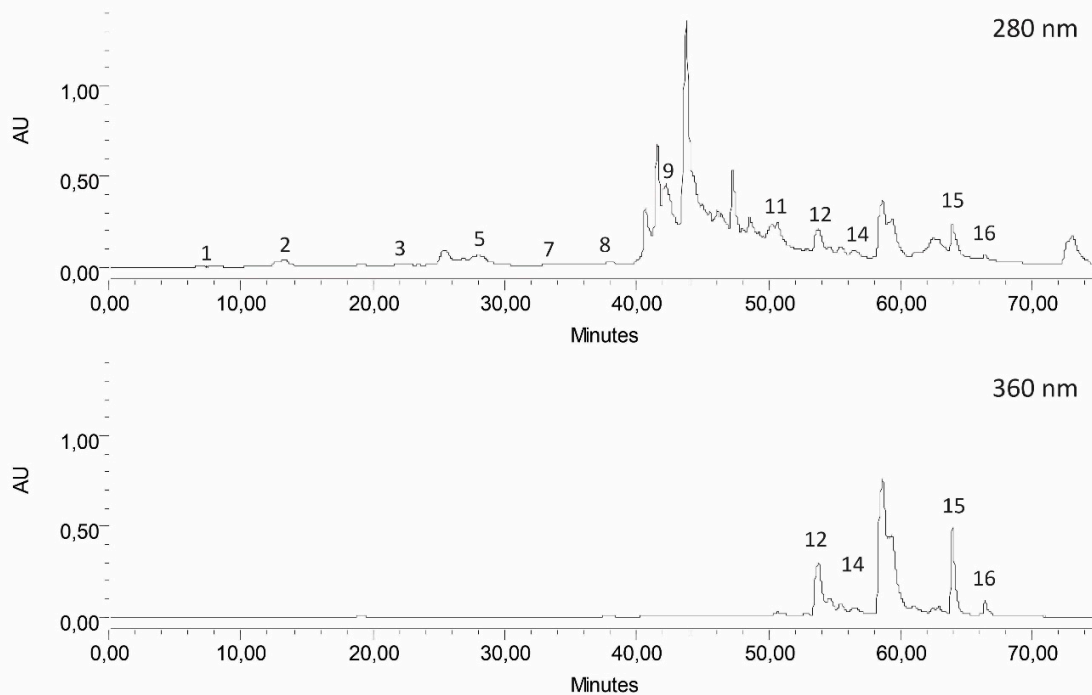


(a)



(b)

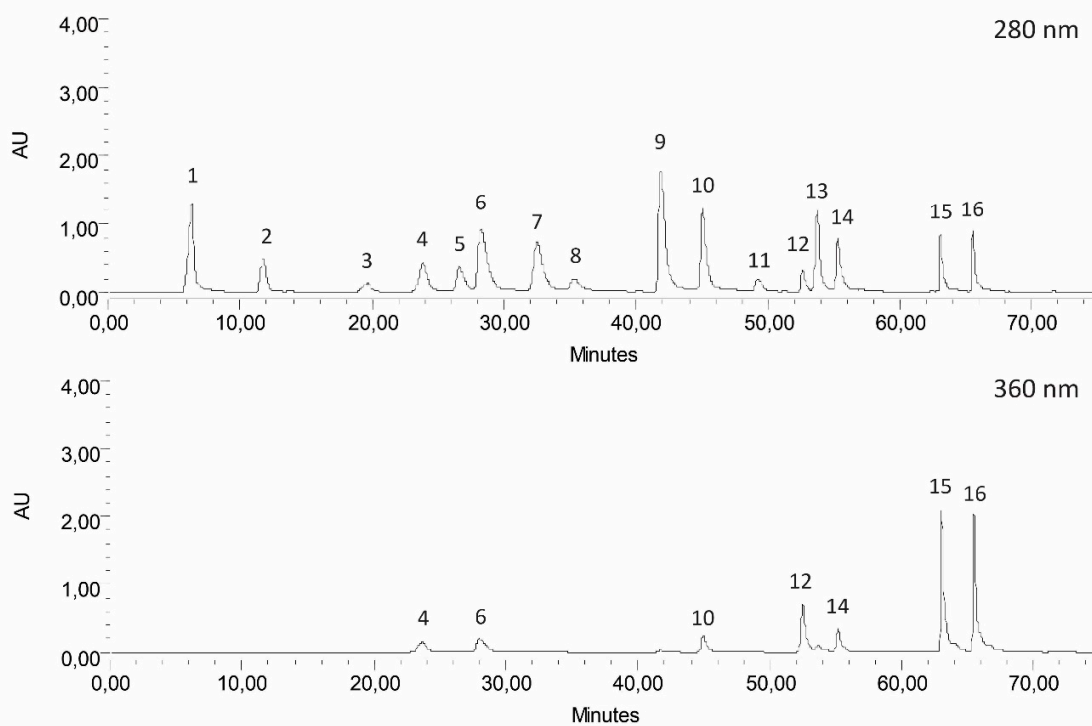


Figure S1. Typical HPLC chromatograms (280 nm and 360 nm) of the phenolic acids and flavonoids in *Filipendulae ulmariae* herba ethanol extract (a) and mixture of standards (b). 1 – Gallic acid, 2 - Protocatehuic acid, 3 - (+)-Catechin, 4 - Chlorogenic acid, 5 - Vanillic acid, 6 - Caffeic acid, 7 - Syringic acid, 8 - (-)-Epicatechin, 9 - p-Coumaric acid, 10 – Ferulic acid, 11 - Salicylic acid, 12 - Rutin, 13 - Hesperidin, 14 - Rosmarinic acid, 15 - Quercetin, 16 – Kaempherol